

# HIV/AIDS SEMI-ANNUAL SURVEILLANCE SUMMARY

**July 2005**

**Cases Reported as of June 30, 2005**



*Enriching Lives*

## **HIV EPIDEMIOLOGY PROGRAM**

600 S. Commonwealth Avenue  
Suite 1920

Los Angeles, CA 90005

Phone: (213) 351-8196

Fax: (213) 487-9386

[www.lapublichealth.org/hiv](http://www.lapublichealth.org/hiv)



COUNTY OF LOS ANGELES  
DEPARTMENT OF HEALTH SERVICES  
**Public Health**

**THOMAS L. GARTHWAITE, M.D.**  
Director and Chief Medical Officer  
DEPARTMENT OF HEALTH SERVICES

**JONATHAN E. FIELDING, M.D., M.P.H.**  
Director of Public Health and Health Officer

**HIV Epidemiology Program**

**GORDON BUNCH, M.A.**, Director  
600 South Commonwealth Avenue, Suite 1920  
Los Angeles, California 90005  
TEL (213) 351-8196 • FAX (213) 487-9386

[www.lapublichealth.org](http://www.lapublichealth.org)

July 19, 2005



**BOARD OF SUPERVISORS**

**Gloria Molina**  
First District

**Yvonne Brathwaite Burke**  
Second District

**Zev Yaroslavsky**  
Third District

**Don Knabe**  
Fourth District

**Michael D. Antonovich**  
Fifth District

Dear Colleague:

Enclosed you will find the July 2005 issue of the *HIV/AIDS Semi-annual Surveillance Summary* for Los Angeles County. As of June 2004, 49,728 persons have been reported with AIDS, 20,739 of whom are living.

One addition to be aware of for this issue is Table 21, showing the number of non-AIDS HIV cases since reporting began in July 2002, broken down by gender, age group, race/ethnicity, mode of exposure, and Service Planning Area (SPA). Thus far, nearly 14,000 non-AIDS HIV cases have been reported in LA County. While we know that not all persons diagnosed with HIV in the county have been reported, we believe the data presented in Table 21 and in Figure 2 now adequately reflect the distribution of known diagnosed non-AIDS HIV cases along broad demographic, behavioral, and geographic lines.

Figures 4 and 5, which show trends for rates of new AIDS diagnoses by gender and race/ethnicity, are again presented here without adjusting for reporting delay. The formula for that adjustment assumes a stable reporting pattern, a condition that still has not been met since HIV reporting began. Once reporting patterns have stabilized, rate trend projections will once again be reliably estimated and these figures will be adjusted.

Data presented in this report and other HIV-related information are available on our website. You may also submit HIV and AIDS data requests by phone or by logging onto our website at <http://lapublichealth.org/hiv/index.htm>.

Sincerely,

---

Douglas M. Frye, Medical Director

---

Gordon Bunch, Director

**NOTICE TO HEALTH CARE PROVIDERS AND OTHERS RESPONSIBLE FOR DISEASE REPORTING:**

California Code of Regulations, Title 17, Section 2500 requires that all diagnosed or suspected cases of AIDS as defined by CDC must be reported within seven (7) days to the Health Officer. In addition, California Code of Regulations, Title 17, Section 2600 requires both health care providers and laboratories report HIV cases to the Health Officer within seven (7) days. To obtain more information on the HIV/AIDS reporting requirement, or to obtain case report forms or to report a case, please visit our web site:

<http://www.lapublichealth.org/hiv/hivreporting.htm>, or contact the HIV Epidemiology Program, 600 South Commonwealth Avenue, Suite 1260, Los Angeles, CA 90005. Phone (213) 351-8516; Fax (213) 487-4683.

The *HIV/AIDS Surveillance Summary* is published semiannually by the HIV Epidemiology Program, Los Angeles County Department of Health Services. Copies of this report are available free of charge. Individuals or organizations may be added to the mailing list by contacting the HIV Epidemiology Program at the phone number or address listed above. This report is also available at our web site at [www.lapublichealth.org/hiv/index.htm](http://www.lapublichealth.org/hiv/index.htm).

Suggested Citation: HIV Epidemiology Program, Los Angeles County Department of Health Services. HIV/AIDS Surveillance Summary, July 2005: 1-28.

Los Angeles County Department of Health Services ..... Thomas L. Garthwaite, MD  
Director and Chief Medical Officer

Public Health..... Jonathan Fielding, MD, MPH, MBA  
Director

Office of Health Assessment and Epidemiology ..... Paul Simon, MD, MPH  
Director

HIV Epidemiology Program..... Gordon Bunch, MA  
Director  
Douglas Frye, MD, MPH  
Medical Director

Data Analysis Unit ..... Virginia Hu, MPH  
Epidemiologist  
Zhijuan Sheng, MS  
Epidemiologist

Data Acquisition Unit ..... Mi Suk Yu-Harlan, MSPH  
Epidemiologist

## CONTENTS

---

Surveillance Summary .....	1
Figure 1: AIDS Cases Reported and Diagnosed by Year, Los Angeles County, 1985- 2004 .....	2
Figure 2: HIV (Non AIDS) Cases Reported and Diagnosed by Year, Los Angeles County, 2002- 2004 .....	2
Figure 3: Cases of AIDS by Year of Diagnosis and Deaths among AIDS Cases by Year of Death, Los Angeles County.....	3
Table 1: Cases, Deaths, Living Cases and Case-Fatality Rate of AIDS by Year, Los Angeles County.....	3
Table 2: Cumulative Cases of AIDS by Gender, Age Group and Race/Ethnicity, Los Angeles County.....	4
Table 3: Cumulative Adult/Adolescent Cases of AIDS by Gender, Exposure Category and Race/Ethnicity, Los Angeles County.....	5
Table 4: Annual Adult/Adolescent Cases of AIDS and Rates per 100,000 by Gender, Year of Diagnosis and Race/Ethnicity, Los Angeles County.....	6
Table 5: Adult/Adolescent Cases of AIDS by Gender, Exposure Category and Year of Diagnosis, Los Angeles County.....	7
Table 6: White Adult/Adolescent Cases of AIDS by Gender, Exposure Category and Year of Diagnosis, Los Angeles County.....	8
Table 7: Black Adult/Adolescent Cases of AIDS by Gender, Exposure Category and Year of Diagnosis, Los Angeles County.....	9
Table 8: Hispanic Adult/Adolescent Cases of AIDS by Gender, Exposure Category and Year of Diagnosis, Los Angeles County.....	10
Table 9: Cumulative Pediatric Cases of AIDS by Exposure Category and Race/Ethnicity, Los Angeles County.....	11
Table 10: Pediatric Cases of AIDS by Race/Ethnicity, Exposure Category and Year of Diagnosis, Los Angeles County.....	11
Table 11: Cumulative Adult/Adolescent and Pediatric Cases of Injection Drug-Associated AIDS by Gender, Exposure Category and Race/Ethnicity, Los Angeles County.....	12
Table 12: Adult/Adolescent AIDS Indicator Conditions at Time of Diagnosis by Gender, Los Angeles County .....	13
Table 13: Annual Cases of AIDS and Rates per 100,000 by Service Planning Area/Health District of Residence and Year of Diagnosis, Los Angeles County.....	14
Table 14: Annual Cases of AIDS and Rates per 100,000 by City/Area of Residence and Year of Diagnosis, Top 35 Cities Ranked by 2004 Rate, Los Angeles County.....	15
Table 15: Reported Number and Rates per 100,000 for Persons Diagnosed with AIDS and Persons Living With AIDS as of December 31, 2004 by Gender, Age, Race/Ethnicity and Exposure Category, Los Angeles County.....	16
Table 16: Cumulative Number of Persons Diagnosed with AIDS by Gender, Age, Race/Ethnicity and Exposure Category for each Service Planning Area in Los Angeles County, 1982-2005 .....	17

Table 17: Number of Persons Diagnosed with AIDS and Rate per 100,000 in Year 2004 by Gender, Age, Race/Ethnicity and Exposure Category for each Service Planning Area in Los Angeles County.....18

Table 18: Persons Living With AIDS and Rate per 100,000 at the End of Calendar Year, by Gender, Age, Race/Ethnicity and Exposure Category, Los Angeles County.....19

Table 19: Persons Living With AIDS and Rate per 100,000 as of December 31, 2004 by Service Planning Area, Gender, Age, Race/Ethnicity and Exposure Category, Los Angeles County. ....20

Table 20: Annual Deaths among AIDS Cases by Age Group, Race/Ethnicity, Gender Exposure Category and Service Planning Area in Los Angeles County .....21

Table 21: Characteristics of Persons Reported with non-AIDS HIV, July 2002 - June 2005, Los Angeles County.....22

Figure 4: Male Adult/Adolescent AIDS Rates by Race/Ethnicity and Year of Diagnosis, Los Angeles County, 1992-2003 .....23

Figure 5: Female Adult/Adolescent AIDS Rates by Race/Ethnicity and Year of Diagnosis, Los Angeles County, 1992-2003 .....23

Figure 6: Percent of Adult/Adolescent AIDS Cases by Race/Ethnicity and Year of Diagnosis, Los Angeles County, 1992-2004 .....24

Figure 7: Number of Adult/Adolescent AIDS Cases by Race/Ethnicity and Year of Diagnosis, Los Angeles County, 1992-2004 .....24

Figure 8: Percent of Adult/Adolescent AIDS Cases by Mode of Exposure and Year of Diagnosis, Los Angeles County, 1992-2004 .....25

Figure 9: Adjusted Mode of Exposure for Adult/Adolescent Living with AIDS as of December 31, 2004 by Gender in Los Angeles County.....25

Appendix 1: 1993 Revised Classification System for HIV Infection and Expanded Surveillance Case Definition for Adolescents and Adults .....26

Appendix 2: Technical Notes .....27

Figure10: Persons Diagnosed with AIDS in 2000-2004 by City/Area and Service Planning Area (SPA) in Los Angeles County..... Back Cover

---

**Los Angeles County Department of Health Services  
HIV Epidemiology Program  
AIDS Semi-annual Surveillance Summary, January-June 2005**

**Los Angeles County<sup>1</sup>**

New cases reported this period	792
Deaths reported this period	212
Cumulative cases	49,728
Cumulative deaths	28,989
Living cases	20,739
Cumulative case-fatality rate	58%

---

**California<sup>2</sup>**

Cumulative cases	137,415
Cumulative deaths	80,000
Living cases	57,415
Cumulative case-fatality rate	58%

---

**United States<sup>3</sup>**

Cumulative cases	929,985 <sup>4</sup>
Cumulative deaths	524,060 <sup>4</sup>
Living cases	405,926 <sup>4</sup>
Cumulative case-fatality rate	56% <sup>5</sup>

---

<sup>1</sup> Includes all cases reported to the HIV Epidemiology Program as of June 30, 2005.

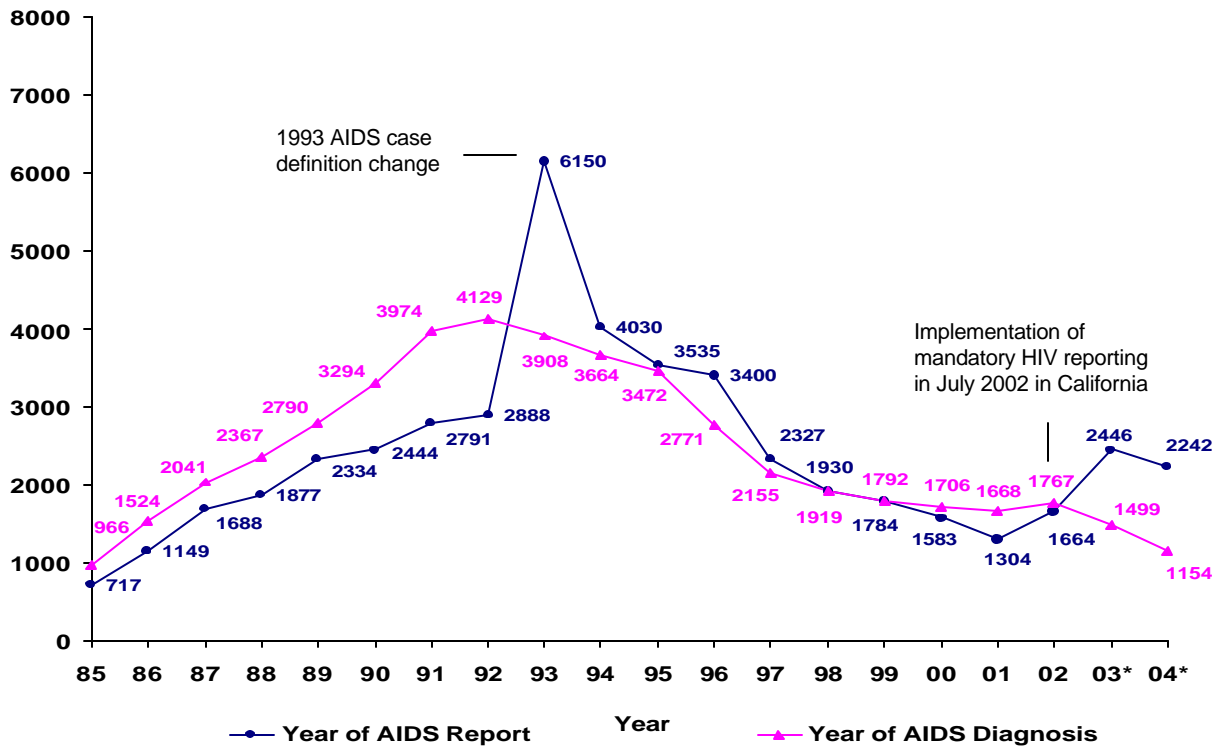
<sup>2</sup> California Office of AIDS. AIDS Surveillance Report for California, June 30, 2005.

<sup>3</sup> Centers for Disease Control and Prevention. HIV/AIDS Surveillance Report 2003, Vol. 15.

<sup>4</sup> This figure does not represent an enumeration of actual cases for this category. Rather, it is a point estimate of cases for this category that has been adjusted for reporting delays and for redistribution of cases in persons initially reported without an identified risk, but not adjusted for incomplete reporting.

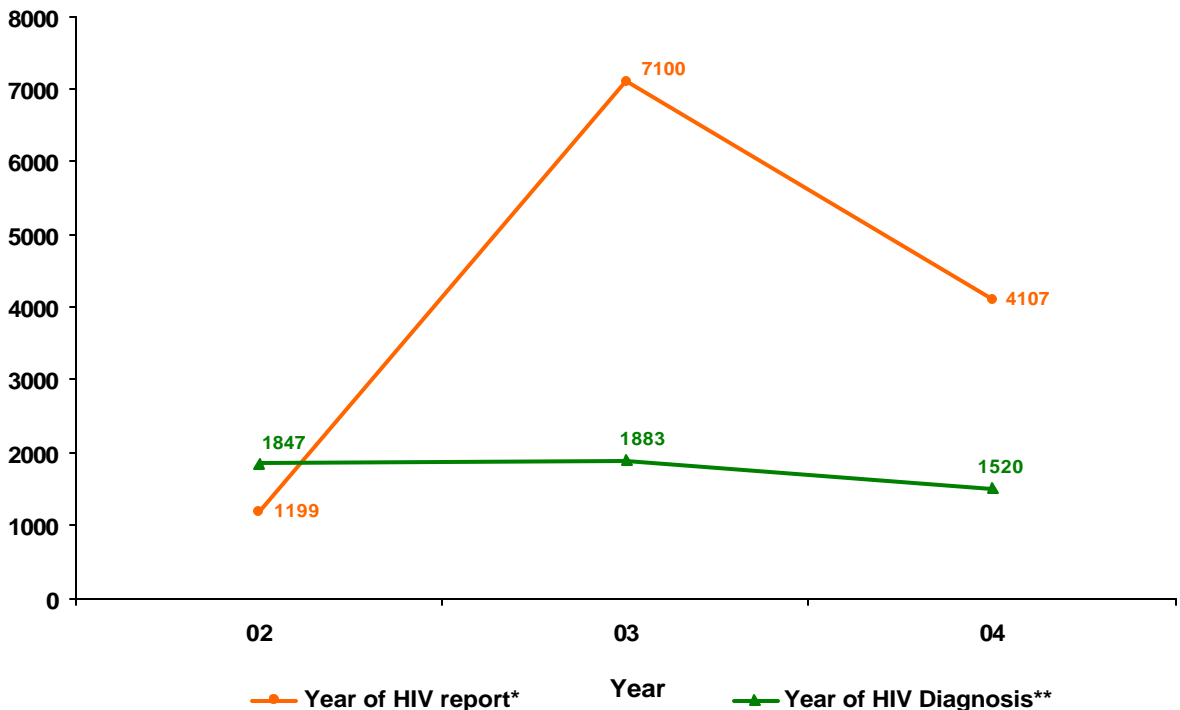
<sup>5</sup> This rate is calculated by dividing the above estimated cumulative deaths into the above estimated cumulative cases.

**FIGURE 1. AIDS CASES REPORTED AND DIAGNOSED BY YEAR, LOS ANGELES COUNTY, 1985-2004**



\* Cases diagnosed in 2003 and 2004 are provisional due to reporting delay.

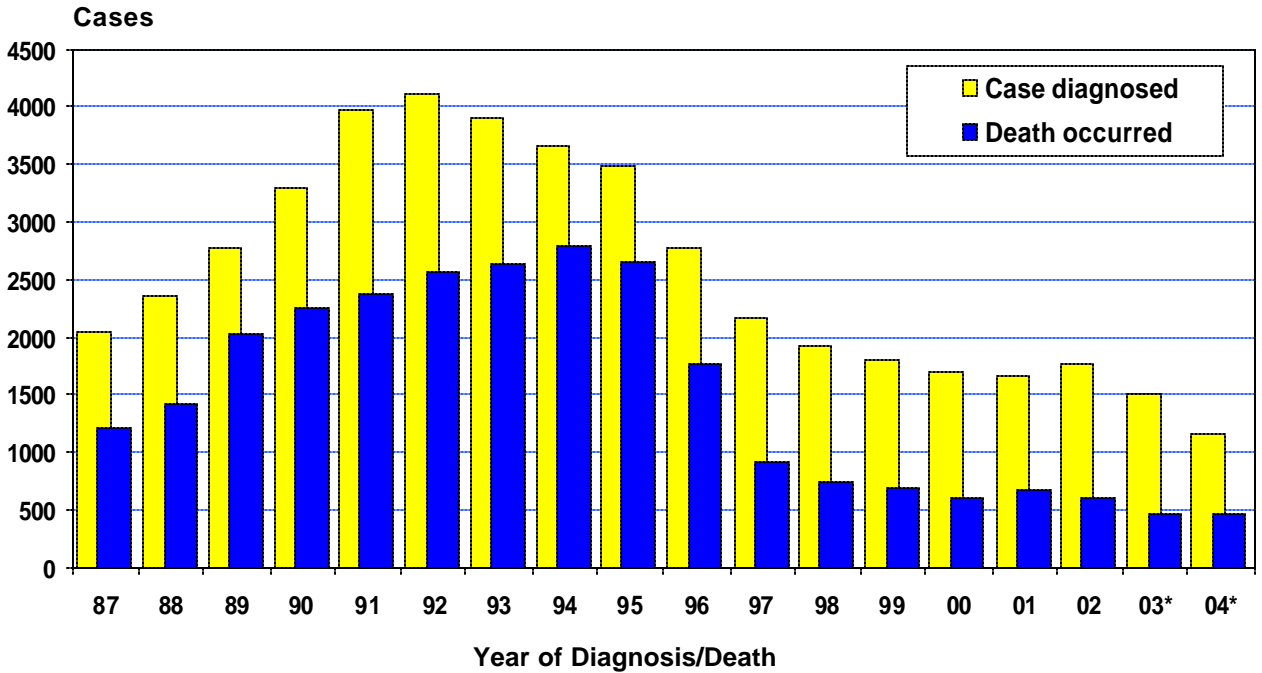
**FIGURE 2. HIV (NON AIDS) CASES REPORTED AND DIAGNOSED BY YEAR, LOS ANGELES COUNTY, 2002-2004**



\* Mandatory HIV reporting was implementation in July 2002 in California.

\*\*Data for diagnosed HIV cases are provisional as a significant portion of prevalent HIV cases are still under investigation.

**FIGURE 3. CASES OF AIDS BY YEAR OF DIAGNOSIS AND DEATHS AMONG AIDS CASES BY YEAR OF DEATH, LOS ANGELES COUNTY**



\* Data are provisional for 2003 and 2004.

**TABLE 1. CASES, DEATHS, LIVING CASES AND CASE-FATALITY RATE OF AIDS BY YEAR REPORTED BY JUNE 30, 2005, LOS ANGELES COUNTY**

Year	No. of Cases diagnosed	No. of Deaths occurred <sup>1</sup>	No. of Living cases <sup>2,3</sup>	Case-fatality Rate (%)
<b>1982- 1986</b>	<b>3383</b>	<b>1994</b>	<b>1389</b>	<b>59</b>
1987	2041	1220	2210	60
1988	2367	1430	3147	60
1989	2790	2015	3922	72
1990	3294	2254	4962	68
1991	3974	2382	6554	60
1992	4129	2561	8122	62
1993	3908	2649	9381	68
1994	3664	2800	10245	76
1995	3472	2669	11048	77
1996	2771	1770	12049	64
1997	2155	915	13289	42
1998	1919	734	14474	38
1999	1792	694	15572	39
2000	1706	595	16683	35
2001	1668	684	17667	41
2002	1767	602	18832	34
2003 (4)	1499	457	19874	30
2004 (4)	1154	465	20563	40
<b>Cumulative Total</b>	<b>49728</b>	<b>28989</b>		<b>58</b>

1. Total death includes cases whose date of death is unknown.
2. Includes persons living with AIDS at the end of each year.
3. Includes persons with AIDS whose vital status is unknown.
4. Data are provisional due to reporting delay.



TABLE 2. CUMULATIVE CASES OF AIDS BY GENDER, AGE GROUP AND RACE/ETHNICITY  
 REPORTED BY JUNE 30, 2005  
 LOS ANGELES COUNTY

Age at Diagnosis (years)	Race/Ethnicity					
	White No. (%)	Black No. (%)	Hispanic No. (%)	Asian (1) No. (%)	AI/AN (2) No. (%)	Total (3) No. (%)
<b>MALE</b>						
<13	26 (<1)	51 ( 1)	61 (<1)	<5 ( -)	<5 ( -)	142 (<1)
13-19	34 (<1)	43 ( 1)	100 ( 1)	<5 ( -)	<5 ( -)	185 (<1)
20-29	2651 ( 12)	1381 ( 16)	3075 ( 23)	138 ( 14)	45 ( 26)	7311 ( 16)
30-39	9820 ( 44)	3753 ( 44)	6288 ( 46)	427 ( 42)	79 ( 45)	20441 ( 45)
40-49	6427 ( 29)	2382 ( 28)	2836 ( 21)	311 ( 31)	35 ( 20)	12032 ( 26)
50-59	2372 ( 11)	766 ( 9)	944 ( 7)	101 ( 10)	9 ( 5)	4203 ( 9)
60+	798 ( 4)	218 ( 3)	331 ( 2)	25 ( 2)	<5 ( -)	1380 ( 3)
<b>Male subtotal</b>	<b>22128</b>	<b>8594</b>	<b>13635</b>	<b>1009</b>	<b>176</b>	<b>45694</b>
[% of subtotal]	[ 48]	[ 19]	[ 30]	[ 2]	[ <1]	[ 100]
<b>FEMALE</b>						
<13	17 ( 2)	36 ( 2)	53 ( 3)	<5 ( -)	<5 ( -)	109 ( 3)
13-19	11 ( 1)	19 ( 1)	27 ( 2)	<5 ( -)	<5 ( -)	61 ( 2)
20-29	155 ( 17)	316 ( 21)	364 ( 24)	12 ( 13)	6 ( 25)	855 ( 21)
30-39	334 ( 37)	575 ( 38)	540 ( 36)	25 ( 27)	8 ( 33)	1488 ( 37)
40-49	209 ( 23)	373 ( 25)	301 ( 20)	28 ( 31)	6 ( 25)	920 ( 23)
50-59	90 ( 10)	132 ( 9)	157 ( 10)	13 ( 14)	<5 ( -)	394 ( 10)
60+	76 ( 9)	46 ( 3)	77 ( 5)	7 ( 8)	<5 ( -)	207 ( 5)
<b>Female subtotal</b>	<b>892</b>	<b>1497</b>	<b>1519</b>	<b>91</b>	<b>24</b>	<b>4034</b>
[% of subtotal]	[ 22]	[ 37]	[ 38]	[ 2]	[ 1]	[ 100]
<b>BOTH</b>						
<13	43 (<1)	87 (<1)	114 (<1)	6 (<1)	<5 ( -)	251 (<1)
13-19	45 (<1)	62 (<1)	127 (<1)	7 (<1)	<5 ( -)	246 (<1)
20-29	2806 ( 12)	1697 ( 17)	3439 ( 23)	150 ( 14)	51 ( 26)	8166 ( 16)
30-39	10154 ( 44)	4328 ( 43)	6828 ( 45)	452 ( 41)	87 ( 44)	21929 ( 44)
40-49	6636 ( 29)	2755 ( 27)	3137 ( 21)	339 ( 31)	41 ( 21)	12952 ( 26)
50-59	2462 ( 11)	898 ( 9)	1101 ( 7)	114 ( 10)	11 ( 6)	4597 ( 9)
60+	874 ( 4)	264 ( 3)	408 ( 3)	32 ( 3)	5 ( 3)	1587 ( 3)
<b>Total</b>	<b>23020</b>	<b>10091</b>	<b>15154</b>	<b>1100</b>	<b>200</b>	<b>49728</b>
[% of total]	[ 46]	[ 20]	[ 30]	[ 2]	[ <1]	[ 100]

1. Includes 9 Burmese, 40 Cambodian, 103 Chinese, 326 Filipino, 18 Guamanian, 38 Hawaiian, 17 Indian, 15 Indonesian, 124 Japanese, 42 Korean, <5 Loatian, 9 Malayan, <5 N Marianan, 8 Pacific Islander, <5 Pakistani, 28 Samoan, <5 Singaporean, <5 Sri Lankan, <5 Tahitian, 27 Taiwanese, 85 Thai, <5 Tongan, and 83 Vietnamese; 112 are of unknown Asian ethnicity.
2. AI/AN=American Indian/Alaska Native.
3. Includes 152 males and 11 females who have multiple races/ethnicities or have missing information on race/ethnicity.

TABLE 3. CUMULATIVE ADULT/ADOLESCENT CASES OF AIDS BY GENDER, EXPOSURE CATEGORY AND RACE/ETHNICITY  
 REPORTED BY JUNE 30, 2005  
 LOS ANGELES COUNTY

Adult/Adolescent Exposure Category (1)	Race/Ethnicity					Total (3) No. (%)
	White No. (%)	Black No. (%)	Hispanic No. (%)	Asian No. (%)	AI/AN (2) No. (%)	
<b>MALE</b>						
Male-male sexual contact	18535 ( 84)	5478 ( 64)	9496 ( 70)	799 ( 79)	126 ( 72)	34558 ( 76)
Injection drug user (IDU)	731 ( 3)	914 ( 11)	780 ( 6)	15 ( 1)	10 ( 6)	2456 ( 5)
Male-male sexual contact/IDU	1721 ( 8)	795 ( 9)	765 ( 6)	34 ( 3)	28 ( 16)	3350 ( 7)
Hemophilia or coagulation disorder	94 (<1)	21 (<1)	38 (<1)	9 ( 1)	<5 ( -)	165 (<1)
Heterosexual contact (4)	150 ( 1)	252 ( 3)	413 ( 3)	19 ( 2)	<5 ( -)	836 ( 2)
Transfusion recipient	139 ( 1)	43 ( 1)	99 ( 1)	19 ( 2)	<5 ( -)	302 ( 1)
Mother with/at risk for HIV	<5 ( -)	5 (<1)	<5 ( -)	<5 ( -)	<5 ( -)	10 (<1)
Other/Undetermined	731 ( 3)	1035 ( 12)	1979 ( 15)	111 ( 11)	10 ( 6)	3875 ( 9)
Male subtotal	22102	8543	13574	1006	175	45552
[% of subtotal]	[ 49]	[ 19]	[ 30]	[ 2]	[ 0]	[100]
<b>FEMALE</b>						
Injection drug user (IDU)	305 ( 35)	427 ( 29)	215 ( 15)	8 ( 9)	12 ( 50)	974 ( 25)
Hemophilia or coagulation disorder	8 ( 1)	<5 ( -)	<5 ( -)	<5 ( -)	<5 ( -)	12 (<1)
Heterosexual contact (4)	355 ( 41)	609 ( 42)	760 ( 52)	41 ( 47)	8 ( 33)	1776 ( 45)
Transfusion recipient	75 ( 9)	55 ( 4)	108 ( 7)	18 ( 20)	<5 ( -)	256 ( 7)
Mother with/at risk for HIV	<5 ( -)	<5 ( -)	<5 ( -)	<5 ( -)	<5 ( -)	5 (<1)
Other/Undetermined	132 ( 15)	365 ( 25)	380 ( 26)	20 ( 23)	<5 ( -)	902 ( 23)
Female subtotal	875	1461	1466	88	24	3925
[% of subtotal]	[ 22]	[ 37]	[ 37]	[ 2]	[ 1]	[100]
<b>BOTH</b>						
Male-male sexual contact	18535 ( 81)	5478 ( 55)	9496 ( 63)	799 ( 73)	126 ( 63)	34558 ( 70)
Injection drug user (IDU)	1036 ( 5)	1341 ( 13)	995 ( 7)	23 ( 2)	22 ( 11)	3430 ( 7)
Male-male sexual contact/IDU	1721 ( 7)	795 ( 8)	765 ( 5)	34 ( 3)	28 ( 14)	3350 ( 7)
Hemophilia or coagulation disorder	102 (<1)	23 (<1)	40 (<1)	9 (<1)	<5 ( -)	177 (<1)
Heterosexual contact (4)	505 ( 2)	861 ( 9)	1173 ( 8)	60 ( 5)	8 ( 4)	2612 ( 5)
Transfusion recipient	214 (<1)	98 (<1)	207 ( 1)	37 ( 3)	<5 ( -)	558 ( 1)
Mother with/at risk for HIV	<5 ( -)	8 (<1)	5 (<1)	<5 ( -)	<5 ( -)	15 (<1)
Other/Undetermined	863 ( 4)	1400 ( 14)	2359 ( 16)	131 ( 12)	14 ( 7)	4777 ( 10)
Total	22977	10004	15040	1094	199	49477
[% of total]	[ 46]	[ 20]	[ 30]	[ 2]	[ <1]	[100]

1. Exposure categories are ordered hierarchically. Except for the combination listed, cases with multiple exposure categories are included in the category listed first.
2. AI/AN=American Indian/Alaska Native.
3. Includes 152 males and 11 females who have multiple races/ethnicities or have missing information on race/ethnicity.
4. Heterosexual contact with a person who is HIV-infected or at increased risk for HIV.

TABLE 4. ANNUAL ADULT/ADOLESCENT CASES OF AIDS AND RATES (1) PER 100,000  
 BY GENDER, YEAR OF DIAGNOSIS AND RACE/ETHNICITY  
 REPORTED BY JUNE 30, 2005  
 LOS ANGELES COUNTY

Year of Diagnosis	Race/Ethnicity					Total (2) No. (Rate)
	White No. (Rate)	Black No. (Rate)	Hispanic No. (Rate)	Asian No. (Rate)	AI/AN No. (Rate)	
<b>MALE</b>						
1992	1937 (131)	743 (220)	1037 (77)	102 (27)	14 (118)	3841 (108)
1993	1736 (119)	691 (205)	1059 (78)	64 (16)	24 (212)	3582 (100)
1994	1566 (109)	687 (204)	981 (70)	79 (19)	11 (94)	3340 (93)
1995	1439 (102)	567 (169)	1009 (71)	61 (15)	20 (195)	3107 (86)
1996	1073 (77)	489 (146)	840 (58)	61 (14)	6 (57)	2473 (68)
1997	645 (47)	410 (122)	754 (51)	49 (11)	6 (54)	1871 (51)
1998	568 (42)	387 (116)	681 (45)	51 (11)	9 (87)	1700 (47)
1999	486 (37)	356 (107)	669 (44)	52 (11)	5 (49)	1575 (43)
2000	472 (36)	331 (98)	636 (41)	29 (6)	8 (73)	1477 (40)
2001	449 (34)	316 (92)	617 (39)	43 (9)	8 (70)	1439 (38)
2002	515 (39)	317 (91)	647 (39)	55 (11)	8 (68)	1544 (40)
2003 (3)	456 (35)	242 (69)	571 (34)	45 (8)	5 (41)	1324 (34)
2004 (3)	280 (21)	187 (53)	491 (29)	42 (8)	<5 (-)	1014 (26)
<b>Cumulative</b>						
Male subtotal (4)	22102	8543	13574	1006	175	45552
<b>FEMALE</b>						
1992	78 (5)	98 (25)	83 (7)	<5 (-)	<5 (-)	264 (7)
1993	78 (5)	108 (27)	115 (9)	<5 (-)	<5 (-)	304 (8)
1994	48 (3)	142 (36)	99 (7)	5 (1)	<5 (-)	297 (8)
1995	75 (5)	126 (32)	127 (9)	7 (1)	5 (45)	343 (9)
1996	54 (4)	99 (25)	127 (9)	<5 (-)	<5 (-)	287 (8)
1997	46 (3)	124 (31)	100 (7)	7 (1)	<5 (-)	278 (7)
1998	40 (3)	74 (18)	95 (6)	<5 (-)	<5 (-)	216 (6)
1999	35 (3)	97 (24)	77 (5)	6 (1)	<5 (-)	215 (6)
2000	42 (3)	81 (20)	98 (6)	<5 (-)	<5 (-)	226 (6)
2001	32 (2)	78 (19)	104 (6)	8 (1)	<5 (-)	225 (6)
2002	37 (3)	75 (18)	98 (6)	7 (1)	<5 (-)	220 (5)
2003 (3)	27 (2)	59 (14)	85 (5)	<5 (-)	<5 (-)	175 (4)
2004 (3)	25 (2)	56 (13)	53 (3)	<5 (-)	<5 (-)	138 (3)
<b>Cumulative</b>						
Female subtotal (4)	875	1461	1466	88	24	3925
<b>Cumulative</b>						
Total (4)	22977	10004	15040	1094	199	49477

1. Rates are based on population estimates (PEPS) for 1992-2003. Rates based on less than 20 observations may not be reliable (see Technical Notes, page 27).
2. Total includes persons who have multiple races/ethnicities or have missing information on race/ethnicity.
3. Data are provisional due to reporting delay. Rates for 2004 are calculated using PEPS data for 2003.
4. Includes persons diagnosed since 1982.

TABLE 5. ADULT/ADOLESCENT CASES OF AIDS BY GENDER, EXPOSURE CATEGORY AND YEAR OF DIAGNOSIS, REPORTED BY JUNE 30, 2005, LOS ANGELES COUNTY

Adult/Adolescent Exposure Category (1)	Year of Diagnosis									Cumulative total (3)
	1996 No. (%)	1997 No. (%)	1998 No. (%)	1999 No. (%)	2000 No. (%)	2001 No. (%)	2002 No. (%)	2003(2) No. (%)	2004(2) No. (%)	
<b>MALE</b>										
Male-male sexual contact	1834 ( 74)	1260 ( 67)	1119 ( 66)	1040 ( 66)	947 ( 64)	923 ( 64)	1014 ( 66)	894 ( 68)	638 ( 63)	34558 ( 76)
Injection drug user (IDU)	159 ( 6)	131 ( 7)	99 ( 6)	77 ( 5)	91 ( 6)	91 ( 6)	83 ( 5)	51 ( 4)	56 ( 6)	2456 ( 5)
Male-male sexual contact/IDU	172 ( 7)	124 ( 7)	120 ( 7)	100 ( 6)	112 ( 8)	102 ( 7)	102 ( 7)	91 ( 7)	48 ( 5)	3350 ( 7)
Hemophilia or coagulation disorder	<5 ( -)	9 (<1)	<5 ( -)	<5 ( -)	<5 ( -)	5 (<1)	<5 ( -)	<5 ( -)	<5 ( -)	165 (<1)
Heterosexual contact (4)	48 ( 2)	59 ( 3)	60 ( 4)	57 ( 4)	53 ( 4)	71 ( 5)	61 ( 4)	58 ( 4)	28 ( 3)	836 ( 2)
Transfusion recipient	13 ( 1)	7 (<1)	<5 ( -)	<5 ( -)	<5 ( -)	5 (<1)	6 (<1)	<5 ( -)	<5 ( -)	302 ( 1)
Mother with/at risk for HIV	<5 ( -)	<5 ( -)	<5 ( -)	<5 ( -)	<5 ( -)	<5 ( -)	<5 ( -)	<5 ( -)	<5 ( -)	10 (<1)
Other/Undetermined	243 ( 10)	281 ( 15)	296 ( 17)	296 ( 19)	263 ( 18)	242 ( 17)	277 ( 18)	225 ( 17)	244 ( 24)	3875 ( 9)
Male subtotal	2473	1871	1700	1575	1477	1439	1544	1324	1014	45552
[% of subtotal]	[ 5]	[ 4]	[ 4]	[ 3]	[ 3]	[ 3]	[ 3]	[ 3]	[ 2]	[100]
<b>FEMALE</b>										
Injection drug user (IDU)	81 ( 28)	78 ( 28)	47 ( 22)	42 ( 20)	41 ( 18)	44 ( 20)	46 ( 21)	21 ( 12)	23 ( 17)	974 ( 25)
Hemophilia or coagulation disorder	<5 ( -)	<5 ( -)	<5 ( -)	<5 ( -)	<5 ( -)	<5 ( -)	<5 ( -)	<5 ( -)	<5 ( -)	12 (<1)
Heterosexual contact (4)	141 ( 49)	132 ( 47)	100 ( 46)	104 ( 48)	106 ( 47)	88 ( 39)	83 ( 38)	76 ( 43)	48 ( 35)	1776 ( 45)
Transfusion recipient	10 ( 3)	7 ( 3)	<5 ( -)	<5 ( -)	<5 ( -)	6 ( 3)	8 ( 4)	<5 ( -)	<5 ( -)	256 ( 7)
Mother with/at risk for HIV	<5 ( -)	<5 ( -)	<5 ( -)	<5 ( -)	<5 ( -)	<5 ( -)	<5 ( -)	<5 ( -)	<5 ( -)	5 (<1)
Other/Undetermined	55 ( 19)	60 ( 22)	64 ( 30)	65 ( 30)	77 ( 34)	86 ( 38)	82 ( 37)	77 ( 44)	63 ( 46)	902 ( 23)
Female subtotal	287	278	216	215	226	225	220	175	138	3925
[% of subtotal]	[ 7]	[ 7]	[ 6]	[ 5]	[ 6]	[ 6]	[ 6]	[ 4]	[ 4]	[100]
Total	2760	2149	1916	1790	1703	1664	1764	1499	1152	49477
[% of total]	[ 6]	[ 4]	[ 4]	[ 4]	[ 3]	[ 3]	[ 4]	[ 3]	[ 2]	[100]

1. Exposure categories are ordered hierarchically. Persons with multiple exposure categories are included in the category listed first.
2. Data are provisional due to reporting delay.
3. Includes persons diagnosed since 1982.
4. Heterosexual contact with a person who is HIV-infected or at increased risk for HIV.

TABLE 6. WHITE ADULT/ADOLESCENT CASES OF AIDS BY GENDER, EXPOSURE CATEGORY AND YEAR OF DIAGNOSIS, REPORTED BY JUNE 30, 2005, LOS ANGELES COUNTY

Adult/Adolescent Exposure Category (1)	Year of Diagnosis									Cumulative total (3)
	1996 No. (%)	1997 No. (%)	1998 No. (%)	1999 No. (%)	2000 No. (%)	2001 No. (%)	2002 No. (%)	2003(2) No. (%)	2004(2) No. (%)	
<b>MALE</b>										
Male-male sexual contact	873 ( 81)	494 ( 77)	421 ( 74)	374 ( 77)	360 ( 76)	333 ( 74)	387 ( 75)	360 ( 79)	212 ( 76)	18535 ( 84)
Injection drug user (IDU)	46 ( 4)	34 ( 5)	31 ( 5)	19 ( 4)	19 ( 4)	28 ( 6)	23 ( 4)	13 ( 3)	14 ( 5)	731 ( 3)
Male-male sexual contact/IDU	95 ( 9)	49 ( 8)	58 ( 10)	39 ( 8)	46 ( 10)	48 ( 11)	52 ( 10)	42 ( 9)	24 ( 9)	1721 ( 8)
Hemophilia or coagulation disorder	<5 ( -)	6 ( 1)	<5 ( -)	<5 ( -)	<5 ( -)	<5 ( -)	<5 ( -)	<5 ( -)	<5 ( -)	94 ( <1)
Heterosexual contact (4)	5 ( <1)	9 ( 1)	9 ( 2)	12 ( 2)	<5 ( -)	8 ( 2)	5 ( 1)	6 ( 1)	<5 ( -)	150 ( 1)
Transfusion recipient	<5 ( -)	<5 ( -)	<5 ( -)	<5 ( -)	<5 ( -)	<5 ( -)	<5 ( -)	<5 ( -)	<5 ( -)	139 ( 1)
Mother with/at risk for HIV	<5 ( -)	<5 ( -)	<5 ( -)	<5 ( -)	<5 ( -)	<5 ( -)	<5 ( -)	<5 ( -)	<5 ( -)	<5 ( -)
Other/Undetermined	50 ( 5)	51 ( 8)	47 ( 8)	39 ( 8)	42 ( 9)	29 ( 6)	46 ( 9)	35 ( 8)	26 ( 9)	731 ( 3)
Male subtotal	1073	645	568	486	472	449	515	456	280	22102
[% of subtotal]	[ 5]	[ 3]	[ 3]	[ 2]	[ 2]	[ 2]	[ 2]	[ 2]	[ 1]	[100]
<b>FEMALE</b>										
Injection drug user (IDU)	26 ( 48)	18 ( 39)	13 ( 33)	15 ( 43)	13 ( 31)	14 ( 44)	14 ( 38)	6 ( 22)	9 ( 36)	305 ( 35)
Hemophilia or coagulation disorder	<5 ( -)	<5 ( -)	<5 ( -)	<5 ( -)	<5 ( -)	<5 ( -)	<5 ( -)	<5 ( -)	<5 ( -)	8 ( 1)
Heterosexual contact (4)	23 ( 43)	23 ( 50)	19 ( 48)	17 ( 49)	19 ( 45)	11 ( 34)	11 ( 30)	6 ( 22)	9 ( 36)	355 ( 41)
Transfusion recipient	<5 ( -)	<5 ( -)	<5 ( -)	<5 ( -)	<5 ( -)	<5 ( -)	<5 ( -)	<5 ( -)	<5 ( -)	75 ( 9)
Other/Undetermined	5 ( 9)	<5 ( -)	6 ( 15)	<5 ( -)	10 ( 24)	6 ( 19)	12 ( 32)	15 ( 56)	7 ( 28)	132 ( 15)
Female subtotal	54	46	40	35	42	32	37	27	25	875
[% of subtotal]	[ 6]	[ 5]	[ 5]	[ 4]	[ 5]	[ 4]	[ 4]	[ 3]	[ 3]	[100]
Total	1127	691	608	521	514	481	552	483	305	22977
[% of total]	[ 5]	[ 3]	[ 3]	[ 2]	[ 2]	[ 2]	[ 2]	[ 2]	[ 1]	[100]

1. Exposure categories are ordered hierarchically. Persons with multiple exposure categories are included in the category listed first.
2. Data are provisional due to reporting delay.
3. Includes persons diagnosed since 1982.
4. Heterosexual contact with a person who is HIV-infected or at increased risk for HIV.

TABLE 7. BLACK ADULT/ADOLESCENT CASES OF AIDS BY GENDER, EXPOSURE CATEGORY AND YEAR OF DIAGNOSIS, REPORTED BY JUNE 30, 2005, LOS ANGELES COUNTY

Adult/Adolescent Exposure Category (1)	Year of Diagnosis									Cumulative total (3)
	1996 No. (%)	1997 No. (%)	1998 No. (%)	1999 No. (%)	2000 No. (%)	2001 No. (%)	2002 No. (%)	2003(2) No. (%)	2004(2) No. (%)	
<b>MALE</b>										
Male-male sexual contact	296 ( 61)	237 ( 58)	235 ( 61)	213 ( 60)	176 ( 53)	174 ( 55)	182 ( 57)	142 ( 59)	100 ( 53)	5478 ( 64)
Injection drug user (IDU)	66 ( 13)	53 ( 13)	36 ( 9)	22 ( 6)	35 ( 11)	30 ( 9)	27 ( 9)	16 ( 7)	13 ( 7)	914 ( 11)
Male-male sexual contact/IDU	35 ( 7)	30 ( 7)	28 ( 7)	27 ( 8)	28 ( 8)	22 ( 7)	21 ( 7)	17 ( 7)	7 ( 4)	795 ( 9)
Hemophilia or coagulation disorder	<5 ( -)	<5 ( -)	<5 ( -)	<5 ( -)	<5 ( -)	<5 ( -)	<5 ( -)	<5 ( -)	<5 ( -)	21 (<1)
Heterosexual contact (4)	20 ( 4)	17 ( 4)	15 ( 4)	13 ( 4)	15 ( 5)	21 ( 7)	11 ( 3)	16 ( 7)	6 ( 3)	252 ( 3)
Transfusion recipient	<5 ( -)	<5 ( -)	<5 ( -)	<5 ( -)	<5 ( -)	<5 ( -)	<5 ( -)	<5 ( -)	<5 ( -)	43 ( 1)
Mother with/at risk for HIV	<5 ( -)	<5 ( -)	<5 ( -)	<5 ( -)	<5 ( -)	<5 ( -)	<5 ( -)	<5 ( -)	<5 ( -)	5 (<1)
Other/Undetermined	70 ( 14)	72 ( 18)	72 ( 19)	79 ( 22)	76 ( 23)	65 ( 21)	75 ( 24)	50 ( 21)	61 ( 33)	1035 ( 12)
<b>Male subtotal</b>	<b>489</b>	<b>410</b>	<b>387</b>	<b>356</b>	<b>331</b>	<b>316</b>	<b>317</b>	<b>242</b>	<b>187</b>	<b>8543</b>
[% of subtotal]	[ 6]	[ 5]	[ 5]	[ 4]	[ 4]	[ 4]	[ 4]	[ 3]	[ 2]	[100]
<b>FEMALE</b>										
Injection drug user (IDU)	33 ( 33)	38 ( 31)	19 ( 26)	17 ( 18)	19 ( 23)	16 ( 21)	22 ( 29)	12 ( 20)	7 ( 13)	427 ( 29)
Hemophilia or coagulation disorder	<5 ( -)	<5 ( -)	<5 ( -)	<5 ( -)	<5 ( -)	<5 ( -)	<5 ( -)	<5 ( -)	<5 ( -)	<5 ( -)
Heterosexual contact (4)	39 ( 39)	58 ( 47)	28 ( 38)	45 ( 46)	33 ( 41)	27 ( 35)	19 ( 25)	24 ( 41)	13 ( 23)	609 ( 42)
Transfusion recipient	<5 ( -)	<5 ( -)	<5 ( -)	<5 ( -)	<5 ( -)	<5 ( -)	<5 ( -)	<5 ( -)	<5 ( -)	55 ( 4)
Mother with/at risk for HIV	<5 ( -)	<5 ( -)	<5 ( -)	<5 ( -)	<5 ( -)	<5 ( -)	<5 ( -)	<5 ( -)	<5 ( -)	<5 ( -)
Other/Undetermined	25 ( 25)	26 ( 21)	25 ( 34)	32 ( 33)	28 ( 35)	32 ( 41)	32 ( 43)	22 ( 37)	33 ( 59)	365 ( 25)
<b>Female subtotal</b>	<b>99</b>	<b>124</b>	<b>74</b>	<b>97</b>	<b>81</b>	<b>78</b>	<b>75</b>	<b>59</b>	<b>56</b>	<b>1461</b>
[% of subtotal]	[ 7]	[ 8]	[ 5]	[ 7]	[ 6]	[ 5]	[ 5]	[ 4]	[ 4]	[100]
<b>Total</b>	<b>588</b>	<b>534</b>	<b>461</b>	<b>453</b>	<b>412</b>	<b>394</b>	<b>392</b>	<b>301</b>	<b>243</b>	<b>10004</b>
[% of total]	[ 6]	[ 5]	[ 5]	[ 5]	[ 4]	[ 4]	[ 4]	[ 3]	[ 2]	[100]

1. Exposure categories are ordered hierarchically. Persons with multiple exposure categories are included in the category listed first.
2. Data are provisional due to reporting delay.
3. Includes persons diagnosed since 1982.
4. Heterosexual contact with a person who is HIV-infected or at increased risk for HIV.

TABLE 8. HISPANIC ADULT/ADOLESCENT CASES OF AIDS BY GENDER, EXPOSURE CATEGORY AND YEAR OF DIAGNOSIS, REPORTED BY JUNE 30, 2005, LOS ANGELES COUNTY

Adult/Adolescent Exposure Category (1)	Year of Diagnosis									Cumulative total (3)
	1996 No. (%)	1997 No. (%)	1998 No. (%)	1999 No. (%)	2000 No. (%)	2001 No. (%)	2002 No. (%)	2003(2) No. (%)	2004(2) No. (%)	
<b>MALE</b>										
Male-male sexual contact	612 ( 73)	482 ( 64)	415 ( 61)	406 ( 61)	382 ( 60)	372 ( 60)	410 ( 63)	350 ( 61)	291 ( 59)	9496 ( 70)
Injection drug user (IDU)	44 ( 5)	42 ( 6)	31 ( 5)	36 ( 5)	37 ( 6)	32 ( 5)	31 ( 5)	21 ( 4)	26 ( 5)	780 ( 6)
Male-male sexual contact/IDU	36 ( 4)	40 ( 5)	31 ( 5)	31 ( 5)	36 ( 6)	30 ( 5)	23 ( 4)	31 ( 5)	13 ( 3)	765 ( 6)
Hemophilia or coagulation disorder	<5 ( -)	<5 ( -)	<5 ( -)	<5 ( -)	<5 ( -)	<5 ( -)	<5 ( -)	<5 ( -)	<5 ( -)	38 ( <1)
Heterosexual contact (4)	23 ( 3)	32 ( 4)	35 ( 5)	30 ( 4)	35 ( 6)	40 ( 6)	41 ( 6)	34 ( 6)	15 ( 3)	413 ( 3)
Transfusion recipient	10 ( 1)	<5 ( -)	<5 ( -)	<5 ( -)	<5 ( -)	<5 ( -)	<5 ( -)	<5 ( -)	<5 ( -)	99 ( 1)
Mother with/at risk for HIV	<5 ( -)	<5 ( -)	<5 ( -)	<5 ( -)	<5 ( -)	<5 ( -)	<5 ( -)	<5 ( -)	<5 ( -)	<5 ( -)
Other/Undetermined	115 ( 14)	152 ( 20)	167 ( 25)	166 ( 25)	140 ( 22)	141 ( 23)	138 ( 21)	131 ( 23)	146 ( 30)	1979 ( 15)
Male subtotal	840	754	681	669	636	617	647	571	491	13574
[% of subtotal]	[ 6]	[ 6]	[ 5]	[ 5]	[ 5]	[ 5]	[ 5]	[ 4]	[ 4]	[100]
<b>FEMALE</b>										
Injection drug user (IDU)	20 ( 16)	19 ( 19)	14 ( 15)	10 ( 13)	8 ( 8)	11 ( 11)	7 ( 7)	3 ( 4)	7 ( 13)	215 ( 15)
Hemophilia or coagulation disorder	<5 ( -)	<5 ( -)	<5 ( -)	<5 ( -)	<5 ( -)	<5 ( -)	<5 ( -)	<5 ( -)	<5 ( -)	<5 ( -)
Heterosexual contact (4)	78 ( 61)	49 ( 49)	50 ( 53)	38 ( 49)	51 ( 52)	46 ( 44)	51 ( 52)	42 ( 49)	24 ( 45)	760 ( 52)
Transfusion recipient	8 ( 6)	<5 ( -)	<5 ( -)	<5 ( -)	<5 ( -)	<5 ( -)	5 ( 5)	<5 ( -)	<5 ( -)	108 ( 7)
Mother with/at risk for HIV	<5 ( -)	<5 ( -)	<5 ( -)	<5 ( -)	<5 ( -)	<5 ( -)	<5 ( -)	<5 ( -)	<5 ( -)	<5 ( -)
Other/Undetermined	21 ( 17)	29 ( 29)	30 ( 32)	28 ( 36)	38 ( 39)	45 ( 43)	35 ( 36)	40 ( 47)	21 ( 40)	380 ( 26)
Female subtotal	127	100	95	77	98	104	98	85	53	1466
[% of subtotal]	[ 9]	[ 7]	[ 6]	[ 5]	[ 7]	[ 7]	[ 7]	[ 6]	[ 4]	[100]
Total	967	854	776	746	734	721	745	656	544	15040
[% of total]	[ 6]	[ 6]	[ 5]	[ 5]	[ 5]	[ 5]	[ 5]	[ 4]	[ 4]	[100]

1. Exposure categories are ordered hierarchically. Persons with multiple exposure categories are included in the category listed first.
2. Data are provisional due to reporting delay.
3. Includes persons diagnosed since 1982.
4. Heterosexual contact with a person who is HIV-infected or at increased risk for HIV.

TABLE 9. CUMULATIVE PEDIATRIC CASES OF AIDS BY EXPOSURE CATEGORY AND RACE/ETHNICITY  
 REPORTED BY JUNE 30, 2005  
 LOS ANGELES COUNTY

Pediatric (<13 years) Exposure Category (1)	Race/Ethnicity				
	White No. (%)	Black No. (%)	Hispanic No. (%)	Other No. (%)	Total No. (%)
Hemophilia/coagulation disorder	3 ( 7)	0 ( 0)	5 ( 4)	1 ( 14)	9 ( 4)
Mother with/at risk for HIV	19 ( 44)	71 ( 82)	82 ( 72)	2 ( 29)	174 ( 69)
Transfusion recipient	21 ( 49)	14 ( 16)	25 ( 22)	4 ( 57)	64 ( 25)
Other/Undetermined	0 ( 0)	2 ( 2)	2 ( 2)	0 ( 0)	4 ( 2)
<b>Total</b>	<b>43</b>	<b>87</b>	<b>114</b>	<b>7</b>	<b>251</b>
[% of total]	[ 17]	[ 35]	[ 45]	[ 3]	[100]

TABLE 10. PEDIATRIC CASES OF AIDS BY RACE/ETHNICITY, EXPOSURE CATEGORY AND YEAR OF DIAGNOSIS  
 REPORTED BY JUNE 30, 2005  
 LOS ANGELES COUNTY

Pediatric (<13 years)	Year of Diagnosis					
	Before 2000 No. (%)	2000 No. (%)	2001 No. (%)	2002 No. (%)	2003 (2) No. (%)	2004 (2) No. (%)
<b>RACE/ETHNICITY</b>						
White	43 ( 18)	0 ( 0)	0 ( 0)	0 ( 0)	0 ( -)	0 ( 0)
Black	82 ( 34)	1 ( 33)	1 ( 25)	2 ( 67)	0 ( -)	1 ( 50)
Hispanic	108 ( 45)	2 ( 67)	3 ( 75)	1 ( 33)	0 ( -)	0 ( 0)
Other	6 ( 3)	0 ( 0)	0 ( 0)	0 ( 0)	0 ( -)	1 ( 50)
<b>Exposure Category (1)</b>						
Hemophilia/coagulation disorder	9 ( 4)	0 ( 0)	0 ( 0)	0 ( 0)	0 ( -)	0 ( 0)
Mother with/at risk for HIV	163 ( 68)	2 ( 67)	4 (100)	3 (100)	0 ( -)	2 (100)
Transfusion recipient	64 ( 27)	0 ( 0)	0 ( 0)	0 ( 0)	0 ( -)	0 ( 0)
Other/Undetermined	3 ( 1)	1 ( 33)	0 ( 0)	0 ( 0)	0 ( -)	0 ( 0)
<b>Total</b>	<b>239</b>	<b>3</b>	<b>4</b>	<b>3</b>	<b>0</b>	<b>2</b>
[% of total]	[ 95]	[ 1]	[ 2]	[ 1]	[ 0]	[ 1]

1. Exposure categories are ordered hierarchically. Except for the combination listed, persons with multiple exposure categories are included in the category listed first.
2. Data are provisional due to reporting delay.



TABLE 11. CUMULATIVE ADULT/ADOLESCENT AND PEDIATRIC CASES OF INJECTION DRUG-ASSOCIATED AIDS  
 BY GENDER, EXPOSURE CATEGORY AND RACE/ETHNICITY  
 REPORTED BY JUNE 30, 2005  
 LOS ANGELES COUNTY

Exposure Category (1)	Race/Ethnicity				
	White No. (%)	Black No. (%)	Hispanic No. (%)	Other No. (%)	Total (2) No. (%)
<b>ADULT/ADOLESCENT</b>					
<b>Male</b>					
Injection drug user (IDU)	731 ( 29)	914 ( 51)	780 ( 47)	25 ( 28)	2456 ( 40)
Male-male sexual contact/IDU	1721 ( 69)	795 ( 44)	765 ( 46)	62 ( 69)	3350 ( 55)
Sex with IDU	58 ( 2)	85 ( 5)	115 ( 7)	<5 ( 3)	263 ( 4)
Mother was IDU	<5 ( -)	<5 ( -)	<5 ( -)	<5 ( -)	<5 ( -)
Adult male subtotal	2511	1796	1661	90	6073
[% of subtotal]	[ 41]	[ 30]	[ 27]	[ 1]	[100]
<b>Female</b>					
Injection drug user (IDU)	305 ( 75)	427 ( 76)	215 ( 63)	20 ( 74)	974 ( 73)
Sex with IDU	99 ( 25)	134 ( 24)	125 ( 37)	7 ( 26)	365 ( 27)
Mother was IDU	<5 ( -)	<5 ( -)	<5 ( -)	<5 ( -)	<5 ( -)
Adult female subtotal	404	562	340	27	1340
[% of subtotal]	[ 30]	[ 42]	[ 25]	[ 2]	[100]
Adult subtotal	2915	2358	2001	117	7413
[% of subtotal]	[ 39]	[ 32]	[ 27]	[ 2]	[100]
<b>PEDIATRIC (&lt;13 YEARS)</b>					
Mother was IDU	8 ( 62)	18 ( 69)	7 ( 33)	<5 ( -)	33 ( 54)
Mother had sex with IDU	5 ( 38)	8 ( 31)	14 ( 67)	<5 ( -)	28 ( 46)
Pediatric subtotal	13	26	21	<5	61
[% of subtotal]	[ 21]	[ 43]	[ 34]	[ -]	[100]
Total	2928	2384	2022	118	7474
[% of total]	[ 39]	[ 32]	[ 27]	[ 2]	[100]

1. Exposure categories are ordered hierarchically. Except for the combination listed, persons with multiple exposure categories are included in the category listed first.
2. Total includes persons who have multiple races/ethnicities or have missing information on race/ethnicity.

TABLE 12. CUMULATIVE ADULT/ADOLESCENT AIDS INDICATOR CONDITIONS AT TIME OF DIAGNOSIS (1) BY GENDER  
 REPORTED BY JUNE 30, 2005  
 LOS ANGELES COUNTY

Indicator Condition (2)	Gender		Total No. (%)
	Male No. (%)	Female No. (%)	
Candidiasis of bronchi, trachea, or lungs	235 ( 1)	34 ( 1)	269 ( 1)
Candidiasis of esophagus	1255 ( 3)	183 ( 5)	1438 ( 3)
Carcinoma, invasive cervical	- ( -)	22 ( 1)	22 ( <1)
Cocci dioi domycosis, disseminated or extrapulmonary	82 ( <1)	7 ( <1)	89 ( <1)
Cryptococcosis, extrapulmonary	872 ( 2)	59 ( 2)	931 ( 2)
Cryptosporidiosis, chronic intestinal	434 ( 1)	16 ( <1)	450 ( 1)
Cytomegalovirus disease other than retinitis	672 ( 1)	55 ( 1)	727 ( 1)
Cytomegalovirus retinitis	433 ( 1)	36 ( 1)	469 ( 1)
HIV encephalopathy	496 ( 1)	38 ( 1)	534 ( 1)
Herpes simplex: chronic ulcers, pneumonitis or esophagitis	852 ( 2)	90 ( 2)	942 ( 2)
Histoplasmosis, disseminated or extrapulmonary	88 ( <1)	11 ( <1)	99 ( <1)
Isosporiasis, chronic intestinal	79 ( <1)	6 ( <1)	85 ( <1)
Kaposi's sarcoma	2040 ( 4)	20 ( 1)	2060 ( 4)
Lymphoma, Burkitt's	122 ( <1)	6 ( <1)	128 ( <1)
Lymphoma, immunoblastic	428 ( 1)	20 ( 1)	448 ( 1)
Lymphoma, primary in brain	74 ( <1)	<5 ( -)	77 ( <1)
Mycobacterium avium or M. kansasii, disseminated	463 ( 1)	29 ( 1)	492 ( 1)
M. tuberculosis, pulmonary	1085 ( 2)	129 ( 3)	1214 ( 2)
M. tuberculosis, disseminated or extrapulmonary	548 ( 1)	82 ( 2)	630 ( 1)
Mycobacterium, other or unidentified species	115 ( <1)	11 ( <1)	126 ( <1)
Pneumocystis carinii pneumonia	5709 ( 13)	456 ( 12)	6165 ( 12)
Pneumonia, recurrent	202 ( <1)	36 ( 1)	238 ( <1)
Progressive multifocal leukoencephalopathy	99 ( <1)	5 ( <1)	104 ( <1)
Salmonella septicemia, recurrent	43 ( <1)	<5 ( -)	47 ( <1)
Toxoplasmosis of the brain	563 ( 1)	71 ( 2)	634 ( 1)
Wasting syndrome	1818 ( 4)	160 ( 4)	1978 ( 4)
CD4 < 200ul	23676 ( 52)	2664 ( 68)	26340 ( 53)
<b>Total</b>	<b>45694</b>	<b>4034</b>	<b>49728</b>

1. The table provides only a minimum estimate of indicator conditions because date of diagnosis may be missing for some indicator conditions.
2. Persons may have more than one condition at time of AIDS diagnosis.

TABLE 13. ANNUAL CASES OF AIDS AND RATES (1) PER 100,000  
 BY SERVICE PLANNING AREA/HEALTH DISTRICT (2) OF RESIDENCE AND YEAR OF DIAGNOSIS  
 REPORTED BY JUNE 30, 2005  
 LOS ANGELES COUNTY

Service Planning Area/ Health District	Year of Diagnosis										Cumulative Total (4) No. (%)	
	2000		2001		2002		2003 (3)		2004 (3)			
	No.	(%) Rate	No.	(%) Rate	No.	(%) Rate	No.	(%) Rate	No.	(%) Rate		
Antelope Valley[1]	20	( 1) 6	19	( 1) 6	21	( 1) 6	13	( 1) 4	10	( 1) 3	457	( 1)
Antelope Valley	20	( 1) 6	19	( 1) 6	21	( 1) 6	13	( 1) 4	10	( 1) 3	457	( 1)
San Fernando[2]	215	( 13) 11	217	( 13) 11	244	( 14) 12	202	( 13) 10	106	( 9) 5	6960	( 14)
East Valley	73	( 4) 17	70	( 4) 16	91	( 5) 21	73	( 5) 16	32	( 3) 7	2717	( 5)
Glendale	22	( 1) 7	40	( 2) 12	29	( 2) 8	14	( 1) 4	19	( 2) 5	1102	( 2)
San Fernando	24	( 1) 6	29	( 2) 7	26	( 1) 6	27	( 2) 6	14	( 1) 3	622	( 1)
West Valley	96	( 6) 12	78	( 5) 9	98	( 6) 11	88	( 6) 10	41	( 4) 5	2519	( 5)
San Gabriel [3]	143	( 8) 8	112	( 7) 6	130	( 7) 7	112	( 7) 6	111	( 10) 6	3622	( 7)
Alhambra	22	( 1) 6	16	( 1) 5	21	( 1) 6	16	( 1) 5	16	( 1) 5	628	( 1)
El Monte	44	( 3) 10	32	( 2) 7	37	( 2) 8	36	( 2) 8	33	( 3) 7	813	( 2)
Foothill	24	( 1) 8	15	( 1) 5	24	( 1) 8	13	( 1) 4	16	( 1) 5	604	( 1)
Pasadena	19	( 1) 14	16	( 1) 12	14	( 1) 10	15	( 1) 10	9	( 1) 6	672	( 1)
Pomona	34	( 2) 6	33	( 2) 6	34	( 2) 6	32	( 2) 6	37	( 3) 7	905	( 2)
Metro[4]	598	( 35) 52	591	( 35) 51	614	( 35) 52	515	( 34) 43	316	( 27) 27	19144	( 38)
Central	219	( 13) 66	228	( 14) 68	208	( 12) 61	187	( 12) 55	119	( 10) 35	5684	( 11)
Hollywood-Wilshire	318	( 19) 63	289	( 17) 56	324	( 18) 63	283	( 19) 54	162	( 14) 31	11426	( 23)
Northeast	61	( 4) 20	74	( 4) 24	82	( 5) 26	45	( 3) 14	35	( 3) 11	2034	( 4)
West[5]	64	( 4) 10	70	( 4) 11	70	( 4) 11	85	( 6) 13	52	( 5) 8	2836	( 6)
West	64	( 4) 10	70	( 4) 11	70	( 4) 11	85	( 6) 13	52	( 5) 8	2836	( 6)
South[6]	216	( 13) 23	201	( 12) 21	198	( 11) 20	181	( 12) 18	139	( 12) 14	4815	( 10)
Compton	36	( 2) 13	28	( 2) 10	28	( 2) 10	31	( 2) 11	26	( 2) 9	822	( 2)
South	36	( 2) 22	39	( 2) 23	51	( 3) 30	20	( 1) 11	27	( 2) 15	783	( 2)
Southeast	31	( 2) 20	31	( 2) 19	23	( 1) 14	35	( 2) 21	19	( 2) 11	727	( 1)
Southwest	113	( 7) 31	103	( 6) 28	96	( 5) 26	95	( 6) 25	67	( 6) 18	2483	( 5)
East[7]	128	( 8) 10	140	( 8) 11	125	( 7) 9	89	( 6) 7	82	( 7) 6	2855	( 6)
Bellflower	17	( 1) 5	26	( 2) 7	34	( 2) 9	16	( 1) 4	13	( 1) 4	604	( 1)
East Los Angeles	32	( 2) 16	30	( 2) 14	28	( 2) 13	21	( 1) 10	20	( 2) 9	643	( 1)
San Antonio	54	( 3) 13	59	( 4) 14	44	( 2) 10	38	( 3) 9	34	( 3) 8	1021	( 2)
Whittier	25	( 1) 8	25	( 1) 8	19	( 1) 6	14	( 1) 4	15	( 1) 5	587	( 1)
South Bay[8]	312	( 18) 21	309	( 19) 20	352	( 20) 23	267	( 18) 17	270	( 23) 17	7622	( 15)
Harbor	16	( 1) 8	24	( 1) 12	23	( 1) 11	17	( 1) 8	24	( 2) 12	438	( 1)
Inglewood	55	( 3) 13	63	( 4) 15	91	( 5) 22	40	( 3) 9	46	( 4) 11	1452	( 3)
Long Beach	217	( 13) 47	193	( 12) 41	216	( 12) 45	187	( 12) 39	172	( 15) 35	4856	( 10)
Torrance	24	( 1) 5	29	( 2) 7	22	( 1) 5	23	( 2) 5	28	( 2) 6	876	( 2)
<b>Total (5)</b>	<b>1706</b>	<b>(100) 18</b>	<b>1668</b>	<b>(100) 17</b>	<b>1767</b>	<b>(100) 18</b>	<b>1499</b>	<b>(100) 15</b>	<b>1154</b>	<b>(100) 12</b>	<b>49728</b>	<b>(100)</b>

1. Rates are based on population estimates (PEPS) from 2000-2003. Rates for 2004 are calculated using PEPS data for 2003. Rates that are based on less than 20 observations may not be reliable (see Technical Notes, page 27).
2. Persons who were diagnosed in 2000 or after are grouped by the modified Service Planning Area/Health District boundaries based on 2000 census tracts.
3. Data are provisional due to reporting delay.
4. Includes persons diagnosed since 1982.
5. Total includes persons with no information on Service Planning Area/Health District.

TABLE 14. ANNUAL CASES OF AIDS AND RATES (1) PER 100,000 BY CITY/AREA (2) OF RESIDENCE AND YEAR OF DIAGNOSIS  
TOP 35 CITIES (3) RANKED BY 2004 RATE, REPORTED BY JUNE 30, 2005  
LOS ANGELES COUNTY

City/Area	Year of Diagnosis					Cumulative Total (5) No.
	2000 No. (Rate)	2001 No. (Rate)	2002 No. (Rate)	2003 (4) No. (Rate)	2004 (4) No. (Rate)	
West Hollywood	55 (153.1)	63 (172.8)	76 (205.9)	72 (192.2)	31 (82.7)	2925
Downtown	10 (46.9)	16 (73.3)	10 (45.0)	16 (70.6)	14 (61.8)	356
Wholesale	87 (161.3)	59 (108.4)	56 (102.3)	61 (110.7)	24 (43.6)	1178
Slvlke-chinatl	41 (52.6)	53 (67.2)	50 (63.1)	51 (63.9)	32 (40.1)	1748
Hollywood	172 (74.3)	148 (63.2)	161 (68.2)	129 (54.1)	82 (34.4)	6015
Long Beach	212 (45.5)	192 (40.7)	213 (44.6)	180 (37.1)	166 (34.2)	4759
Adams-la Brea	19 (35.0)	18 (32.7)	14 (25.1)	13 (23.0)	17 (30.1)	418
Watts	14 (40.0)	11 (30.8)	11 (30.3)	<5 (-)	10 (27.0)	172
Los Feliz	14 (33.6)	27 (63.9)	37 (86.7)	18 (41.8)	11 (25.5)	1187
San Pedro	6 (8.1)	15 (20.0)	10 (13.2)	12 (15.6)	18 (23.3)	221
Crenshaw	27 (38.5)	19 (26.8)	30 (41.9)	20 (27.7)	15 (20.7)	611
Westlake	37 (31.3)	52 (43.3)	30 (24.7)	33 (26.9)	25 (20.3)	978
S Vermont	27 (26.0)	25 (23.7)	25 (23.4)	21 (19.4)	20 (18.5)	584
Venice	10 (26.4)	<5 (-)	14 (36.6)	9 (23.4)	7 (18.2)	405
Florence	<5 (-)	5 (13.7)	5 (13.3)	7 (18.1)	7 (18.1)	129
Westmont-w Aths	5 (13.8)	9 (24.1)	14 (36.6)	<5 (-)	7 (17.7)	166
Boyle Heights	27 (30.9)	28 (31.7)	27 (30.3)	12 (13.3)	15 (16.7)	447
Miracle Mile S	8 (16.7)	13 (26.6)	16 (32.3)	15 (29.9)	8 (16.0)	599
Inglewood	20 (17.8)	30 (26.3)	33 (28.7)	10 (8.5)	18 (15.4)	541
Miracle Mile N	18 (42.0)	10 (22.8)	15 (33.5)	14 (30.5)	7 (15.3)	638
Wilshir Ctr S	27 (30.1)	21 (23.1)	20 (21.8)	27 (29.2)	14 (15.1)	612
N Hollywood	39 (31.1)	24 (18.8)	41 (31.6)	27 (20.4)	19 (14.4)	1259
Green Meadows	10 (17.9)	13 (22.9)	15 (26.0)	6 (10.2)	8 (13.6)	286
Lincoln Hts	7 (15.7)	11 (24.5)	9 (20.0)	<5 (-)	6 (13.2)	240
W Adms-expo Pk	43 (34.5)	36 (28.5)	22 (17.2)	29 (22.3)	17 (13.1)	789
Harbor City	<5 (-)	6 (16.1)	5 (13.3)	<5 (-)	5 (13.1)	65
Bell Gardens	8 (18.1)	5 (11.2)	7 (15.4)	5 (10.9)	6 (13.1)	97
Hawthorne	11 (12.6)	9 (10.1)	20 (22.2)	10 (11.0)	11 (12.1)	260
Rosemead	<5 (-)	<5 (-)	<5 (-)	<5 (-)	6 (11.9)	82
Pomona	14 (9.4)	18 (11.9)	16 (10.4)	16 (10.3)	18 (11.5)	408
Westchester	<5 (-)	10 (20.0)	<5 (-)	<5 (-)	6 (11.5)	145
Wilshir Ctr N	40 (51.6)	23 (29.1)	29 (36.1)	15 (18.4)	9 (11.0)	715
City Terrace	9 (20.7)	10 (22.5)	8 (17.8)	<5 (-)	5 (10.9)	175
Vermont Square	21 (29.7)	25 (34.9)	13 (17.9)	12 (16.3)	8 (10.9)	420
Centrl Av-s Pk	21 (18.3)	20 (17.1)	20 (16.8)	21 (17.3)	13 (10.7)	500

1. Rates are based on population estimates (PEPS) for 2000-2003. Rates based on less than 20 observations may not be reliable (see Technical Notes, page 27).
2. The city of Los Angeles is broken down into "areas" or geographic units with more than 15,000 residents. The number and rates for AIDS in each city or small area over time are affected by the boundary changes accompanied by census 2000.
3. Includes cities and areas that had more than 15,000 residents and at least five persons diagnosed with AIDS in 2004. The information on cities/areas is based on census 1990 and census 2000 definition according to the time of AIDS diagnosis.
4. Data are provisional due to reporting delay.
5. Includes persons diagnosed since 1982.

TABLE 15. REPORTED NUMBER AND RATES PER 100,000 (1) FOR PERSONS DIAGNOSED WITH AIDS AND PERSONS LIVING WITH AIDS (2) AS OF DECEMBER 31, 2004  
BY GENDER, AGE, RACE/ETHNICITY AND EXPOSURE CATEGORY, LOS ANGELES COUNTY

	Male			Female			Total								
	Year 2004(3)		Living(3)	Cumulative(4)		Year 2004(3)		Living(3)	Cumulative(4)		Year 2004(3)		Living(3)	Cumulative(4)	
	No. (%)	Rate	No. (%)	Rate	No. (%)	No. (%)	Rate	No. (%)	Rate	No. (%)	Rate	No. (%)	Rate	No. (%)	
<b>AGE GROUP (5)</b>															
<13	<5 ( -)	-	26 (<1)	3	142 (<1)	<5 ( -)	-	13 ( 1)	1	109 ( 3)	<5 ( -)	-	39 (<1)	2	251 ( 1)
13-19	6 ( 1)	1	36 (<1)	6	185 (<1)	<5 ( -)	-	27 ( 1)	5	61 ( 2)	8 ( 1)	1	63 (<1)	6	246 (<1)
20-29	135 ( 13)	19	633 ( 3)	87	7311 ( 16)	19 ( 14)	3	132 ( 6)	19	855 ( 21)	154 ( 13)	11	765 ( 4)	53	8166 ( 16)
30-39	408 ( 40)	52	4714 ( 26)	596	20441 ( 45)	49 ( 36)	6	669 ( 30)	86	1488 ( 37)	457 ( 40)	29	5383 ( 26)	343	21929 ( 44)
40-49	317 ( 31)	45	8107 ( 44)	1140	12032 ( 26)	39 ( 28)	5	816 ( 37)	113	920 ( 23)	356 ( 31)	25	8923 ( 43)	622	12952 ( 26)
50-59	115 ( 11)	23	3694 ( 20)	751	4203 ( 9)	24 ( 17)	4	375 ( 17)	69	394 ( 10)	139 ( 12)	13	4069 ( 20)	395	4597 ( 9)
60+	33 ( 3)	5	1155 ( 6)	186	1380 ( 3)	5 ( 4)	1	166 ( 8)	20	207 ( 5)	38 ( 3)	3	1321 ( 6)	92	1587 ( 3)
<b>RACE/ETHNICITY (6)</b>															
White	280 ( 28)	19	7123 ( 39)	473	22128 ( 48)	25 ( 18)	2	419 ( 19)	27	892 ( 22)	305 ( 26)	10	7542 ( 37)	247	23020 ( 46)
Black	188 ( 19)	42	3533 ( 19)	785	8594 ( 19)	56 ( 41)	11	778 ( 35)	149	1497 ( 37)	244 ( 21)	25	4311 ( 21)	444	10091 ( 20)
Hispanic	491 ( 48)	21	7046 ( 38)	303	13635 ( 30)	53 ( 38)	2	933 ( 42)	40	1519 ( 38)	544 ( 47)	12	7979 ( 39)	172	15154 ( 30)
Asian	43 ( 4)	7	511 ( 3)	80	1009 ( 2)	<5 ( -)	-	45 ( 2)	6	91 ( 2)	46 ( 4)	3	556 ( 3)	42	1100 ( 2)
AI/AN	<5 ( -)	-	79 (<1)	519	176 (<1)	<5 ( -)	-	16 ( 1)	101	24 ( 1)	<5 ( -)	-	95 (<1)	307	200 (<1)
<b>EXPOSURE CATEGORY (7)</b>															
MSM	638 ( 63)		13318 ( 73)		34558 ( 76)	- ( -)		- ( -)		- ( -)	638 ( 55)		13318 ( 65)		34558 ( 69)
IDU	56 ( 6)		900 ( 5)		2456 ( 5)	23 ( 17)		479 ( 22)		974 ( 24)	79 ( 7)		1379 ( 7)		3430 ( 7)
MSM/IDU	48 ( 5)		1332 ( 7)		3350 ( 7)	- ( -)		- ( -)		- ( -)	48 ( 4)		1332 ( 6)		3350 ( 7)
Hemophi/Transfusion	<5 ( -)		114 ( 1)		521 ( 1)	<5 ( -)		83 ( 4)		287 ( 7)	<5 ( -)		197 ( 1)		808 ( 2)
Heterosexual contact	28 ( 3)		505 ( 3)		836 ( 2)	48 ( 35)		1059 ( 48)		1776 ( 44)	76 ( 7)		1564 ( 8)		2612 ( 5)
Mother w/at HIV risk	<5 ( -)		47 (<1)		96 (<1)	<5 ( -)		33 ( 2)		93 ( 2)	<5 ( -)		80 (<1)		189 (<1)
Other/Undetermined	244 ( 24)		2149 ( 12)		3877 ( 8)	63 ( 46)		544 ( 25)		904 ( 22)	307 ( 27)		2693 ( 13)		4781 ( 10)
<b>Total (8)</b>	<b>1016 ( 88)</b>	<b>21</b>	<b>18365 ( 89)</b>	<b>373</b>	<b>45694 ( 92)</b>	<b>138 ( 12)</b>	<b>3</b>	<b>2198 ( 11)</b>	<b>43</b>	<b>4034 ( 8)</b>	<b>1154 (100)</b>	<b>12</b>	<b>20563 (100)</b>	<b>205</b>	<b>49728 (100)</b>

1. Rates based on less than 20 observations may not be reliable. Rates are based on year 2003 population estimates(PEPS) (see Technical Notes, page 27).
2. Includes persons with AIDS whose vital status is unknown.
3. Data are provisional due to reporting delay.
4. Include persons reported as of June 30, 2005.
5. Age distributions for year 2004 and cumulative cases are based on age at the time of AIDS diagnosis while the age distribution for persons living with AIDS is based on age as of December 31, 2004.
6. Does not include persons who have multiple races/ethnicities or have missing information on race/ethnicity.
7. Rate for exposure category is not available.
8. Percent of total cases that are Male and Female shown in this row.

TABLE 16. CUMULATIVE NUMBER OF PERSONS DIAGNOSED WITH AIDS BY GENDER, AGE, RACE/ETHNICITY AND EXPOSURE CATEGORY FOR EACH SERVICE PLANNING AREA (SPA) (1) IN LOS ANGELES COUNTY, 1982-2005

Service Planning Area	Antelope Valley No. (%)	San Fernando No. (%)	San Gabriel No. (%)	Metro No. (%)	West No. (%)	South No. (%)	East No. (%)	South Bay/LB No. (%)	Total (2) No. (%)
<b>GENDER</b>									
Male	391 ( 86)	6471 ( 93)	3186 ( 88)	18269 ( 95)	2664 ( 94)	4005 ( 83)	2513 ( 88)	6914 ( 91)	45694 ( 92)
Female	66 ( 14)	489 ( 7)	436 ( 12)	875 ( 5)	172 ( 6)	810 ( 17)	342 ( 12)	708 ( 9)	4034 ( 8)
<b>AGE GROUP (3)</b>									
<13	6 ( 1)	34 (<1)	32 ( 1)	51 (<1)	10 (<1)	41 ( 1)	29 ( 1)	38 (<1)	251 ( 1)
13-19	<5 ( -)	26 (<1)	25 ( 1)	65 (<1)	5 (<1)	46 ( 1)	25 ( 1)	45 ( 1)	246 (<1)
20-29	80 ( 18)	1007 ( 14)	645 ( 18)	2969 ( 16)	392 ( 14)	960 ( 20)	587 ( 21)	1264 ( 17)	8166 ( 16)
30-39	194 ( 42)	2973 ( 43)	1540 ( 43)	8673 ( 45)	1295 ( 46)	1943 ( 40)	1208 ( 42)	3471 ( 46)	21929 ( 44)
40-49	116 ( 25)	1923 ( 28)	875 ( 24)	5173 ( 27)	745 ( 26)	1198 ( 25)	641 ( 22)	1934 ( 25)	12952 ( 26)
50-59	39 ( 9)	747 ( 11)	338 ( 9)	1711 ( 9)	269 ( 9)	447 ( 9)	252 ( 9)	665 ( 9)	4597 ( 9)
60+	18 ( 4)	250 ( 4)	167 ( 5)	502 ( 3)	120 ( 4)	180 ( 4)	113 ( 4)	205 ( 3)	1587 ( 3)
<b>RACE/ETHNICITY (4)</b>									
White	239 ( 52)	4315 ( 62)	1300 ( 36)	10022 ( 52)	1900 ( 67)	248 ( 5)	623 ( 22)	3787 ( 50)	23020 ( 46)
Black	111 ( 24)	625 ( 9)	615 ( 17)	2905 ( 15)	374 ( 13)	3122 ( 65)	164 ( 6)	1827 ( 24)	10091 ( 20)
Hispanic	100 ( 22)	1817 ( 26)	1517 ( 42)	5629 ( 29)	469 ( 17)	1409 ( 29)	1986 ( 70)	1777 ( 23)	15154 ( 30)
Asian	<5 ( -)	151 ( 2)	164 ( 5)	422 ( 2)	63 ( 2)	22 (<1)	58 ( 2)	196 ( 3)	1100 ( 2)
AI/AN	<5 ( -)	26 (<1)	13 (<1)	89 (<1)	13 (<1)	9 (<1)	17 ( 1)	27 (<1)	200 (<1)
<b>EXPOSURE CATEGORY</b>									
MSM	227 ( 50)	4993 ( 72)	2221 ( 61)	14734 ( 77)	2180 ( 77)	2473 ( 51)	1700 ( 60)	5214 ( 68)	34558 ( 69)
IDU	71 ( 16)	440 ( 6)	326 ( 9)	829 ( 4)	131 ( 5)	558 ( 12)	234 ( 8)	678 ( 9)	3430 ( 7)
MSM/IDU	36 ( 8)	373 ( 5)	208 ( 6)	1394 ( 7)	148 ( 5)	302 ( 6)	154 ( 5)	595 ( 8)	3350 ( 7)
Hemophi/Transfusion	19 ( 4)	147 ( 2)	101 ( 3)	140 ( 1)	60 ( 2)	102 ( 2)	94 ( 3)	126 ( 2)	808 ( 2)
Heterosexual contact	41 ( 9)	327 ( 5)	281 ( 8)	531 ( 3)	108 ( 4)	501 ( 10)	231 ( 8)	520 ( 7)	2612 ( 5)
Mother w/at HIV risk	<5 ( -)	20 (<1)	25 ( 1)	40 (<1)	7 (<1)	35 ( 1)	19 ( 1)	31 (<1)	189 (<1)
Other/Undetermined	61 ( 13)	660 ( 9)	460 ( 13)	1476 ( 8)	202 ( 7)	844 ( 18)	423 ( 15)	458 ( 6)	4781 ( 10)
<b>Total</b>	<b>457 (100)</b>	<b>6960 (100)</b>	<b>3622 (100)</b>	<b>19144 (100)</b>	<b>2836 (100)</b>	<b>4815 (100)</b>	<b>2855 (100)</b>	<b>7622 (100)</b>	<b>49728 (100)</b>

1. Persons who were diagnosed in 2000 or after are grouped by the modified Service Planning Area boundaries based on 2000 census tracts.
2. Total includes persons with no information on SPA.
3. Age at time of diagnosis.
4. Does not include cases who have multiple races/ethnicities or have missing information on race/ethnicity.

TABLE 17. NUMBER OF PERSONS DIAGNOSED WITH AIDS (1) AND RATE (1, 2) PER 100,000 IN YEAR 2004  
 BY GENDER, AGE, RACE/ETHNICITY AND EXPOSURE CATEGORY FOR EACH SERVICE PLANNING AREA (SPA) (3) IN LOS ANGELES COUNTY

Service Planning Area	Antelope Valley No. (%) Rate	San Fernando No. (%) Rate	San Gabriel No. (%) Rate	Metro No. (%) Rate	West No. (%) Rate	South No. (%) Rate	East No. (%) Rate	South Bay/LB No. (%) Rate	Total (4) No. (%) Rate
<b>GENDER</b>									
Male	8 ( 80) 5	95 ( 90) 9	98 ( 88) 11	290 ( 92) 48	47 ( 90) 15	113 ( 81) 23	71 ( 87) 11	233 ( 86) 30	1016 ( 88) 21
Female	<5 ( -) -	11 ( 10) 1	13 ( 12) 1	26 ( 8) 4	5 ( 10) 1	26 ( 19) 5	11 ( 13) 2	37 ( 14) 5	138 ( 12) 3
<b>AGE GROUP (5)</b>									
<30	<5 ( -) -	14 ( 13) 2	13 ( 12) 2	36 ( 11) 7	7 ( 13) 3	21 ( 15) 4	22 ( 27) 3	39 ( 14) 6	164 ( 14) 4
30-39	<5 ( -) -	43 ( 41) 13	48 ( 43) 18	136 ( 43) 61	13 ( 25) 11	51 ( 37) 36	27 ( 33) 13	109 ( 40) 44	457 ( 40) 29
40-49	<5 ( -) -	35 ( 33) 11	38 ( 34) 14	102 ( 32) 61	21 ( 40) 22	41 ( 29) 34	19 ( 23) 11	78 ( 29) 34	356 ( 31) 25
50+	<5 ( -) -	14 ( 13) 3	12 ( 11) 2	42 ( 13) 15	11 ( 21) 5	26 ( 19) 14	14 ( 17) 5	44 ( 16) 11	177 ( 15) 7
<b>RACE/ETHNICITY (6)</b>									
White	<5 ( -) -	39 ( 37) 4	16 ( 14) 4	96 ( 30) 35	26 ( 50) 6	7 ( 5) 28	10 ( 12) 4	92 ( 34) 19	305 ( 26) 10
Black	<5 ( -) -	11 ( 10) 14	9 ( 8) 11	56 ( 18) 78	7 ( 13) 15	72 ( 52) 22	5 ( 6) 12	65 ( 24) 25	244 ( 21) 25
Hispanic	5 ( 50) 5	50 ( 47) 6	71 ( 64) 9	144 ( 46) 22	13 ( 25) 12	60 ( 43) 9	63 ( 77) 7	104 ( 39) 18	544 ( 47) 12
Other (7)	<5 ( -) -	<5 ( -) -	13 ( 12) 3	17 ( 5) 9	5 ( 10) 6	<5 ( -) -	<5 ( -) -	9 ( 3) 4	50 ( 4) 4
<b>EXPOSURE CATEGORY (8)</b>									
MSM	<5 ( -)	61 ( 58)	54 ( 49)	198 ( 63)	31 ( 60)	52 ( 37)	45 ( 55)	158 ( 59)	638 ( 55)
IDU	<5 ( -)	5 ( 5)	9 ( 8)	21 ( 7)	<5 ( -)	5 ( 4)	<5 ( -)	29 ( 11)	79 ( 7)
MSM/IDU	<5 ( -)	<5 ( -)	6 ( 5)	20 ( 6)	<5 ( -)	<5 ( -)	<5 ( -)	10 ( 4)	48 ( 4)
Hemophi/Transfusion	<5 ( -)	<5 ( -)	<5 ( -)	<5 ( -)	<5 ( -)	<5 ( -)	<5 ( -)	<5 ( -)	<5 ( -)
Heterosexual contact	<5 ( -)	<5 ( -)	9 ( 8)	9 ( 3)	<5 ( -)	12 ( 9)	10 ( 12)	27 ( 10)	76 ( 7)
Mother w/at HIV risk	<5 ( -)	<5 ( -)	<5 ( -)	<5 ( -)	<5 ( -)	<5 ( -)	<5 ( -)	<5 ( -)	<5 ( -)
Other/Undetermined	6 ( 60)	36 ( 34)	33 ( 30)	68 ( 22)	12 ( 23)	66 ( 47)	21 ( 26)	44 ( 16)	307 ( 27)
<b>Total</b>	<b>10 (100) 3</b>	<b>106 (100) 5</b>	<b>111 (100) 6</b>	<b>316 (100) 27</b>	<b>52 (100) 8</b>	<b>139 (100) 14</b>	<b>82 (100) 6</b>	<b>270 (100) 17</b>	<b>1154 (100) 12</b>

1. Data are provisional due to reporting delay.
2. Rates based on less than 20 observations may not be reliable. Rates are based on population estimates (PEPS) for 2003 (see Technical Notes, page 27).
3. Persons who were diagnosed in 2000 or after are grouped by the modified Service Planning Area boundaries based on 2000 census tracts.
4. Total includes persons with no information on SPA.
5. Age at time of diagnosis.
6. Does not include persons who have multiple races/ethnicities or have missing information on race/ethnicity.
7. Other includes Asian, Pacific Islander, American Indian and Alaskan Native.
8. Rate for exposure category is not available.

TABLE 18. PERSONS LIVING WITH AIDS (1) AND RATE PER 100,000 (2) AT THE END OF CALENDAR YEAR, BY GENDER, AGE, RACE/ETHNICITY AND EXPOSURE CATEGORY REPORTED BY JUNE 30, 2005 , LOS ANGELES COUNTY

Calendar Year	1997			1998			1999			2000			2001			2002			2003 (3)			2004 (3)		
	No.	(%)	Rate	No.	(%)	Rate	No.	(%)	Rate	No.	(%)	Rate	No.	(%)	Rate	No.	(%)	Rate	No.	(%)	Rate	No.	(%)	Rate
<b>GENDER</b>																								
Male	11992	(90)	260	13051	(90)	281	14017	(90)	300	14973	(90)	317	15802	(89)	329	16833	(89)	346	17756	(89)	360	18365	(89)	373
Female	1297	(10)	28	1423	(10)	30	1555	(10)	33	1710	(10)	35	1865	(11)	38	1999	(11)	40	2118	(11)	42	2198	(11)	43
<b>AGE GROUP (4)</b>																								
<13	61	(<1)	3	56	(<1)	3	53	(<1)	3	50	(<1)	3	44	(<1)	2	46	(<1)	2	42	(<1)	2	39	(<1)	2
13-19	52	(<1)	5	58	(<1)	6	58	(<1)	6	63	(<1)	6	72	(<1)	7	63	(<1)	6	64	(<1)	6	63	(<1)	6
20-29	1132	( 9)	73	1042	( 7)	68	951	( 6)	63	887	( 5)	60	863	( 5)	59	848	( 5)	59	847	( 4)	59	765	( 4)	53
30-39	5805	(44)	366	6125	(42)	386	6278	(40)	395	6317	(38)	398	6165	(35)	388	6046	(32)	382	5809	(29)	370	5383	(26)	343
40-49	4388	(33)	345	4993	(34)	384	5668	(36)	427	6303	(38)	465	6964	(39)	502	7693	(41)	545	8407	(42)	586	8923	(43)	622
50-59	1456	(11)	171	1733	(12)	199	2015	(13)	226	2388	(14)	259	2777	(16)	289	3202	(17)	322	3598	(18)	349	4069	(20)	395
60+	395	( 3)	33	467	( 3)	39	549	( 4)	45	675	( 4)	54	782	( 4)	59	934	( 5)	68	1107	( 6)	77	1321	( 6)	92
<b>RACE/ETHNICITY (5)</b>																								
White	5656	(43)	175	5948	(41)	187	6173	(40)	198	6464	(39)	209	6685	(38)	217	7054	(37)	230	7386	(37)	242	7542	(37)	247
Black	2787	(21)	296	3081	(21)	328	3358	(22)	358	3600	(22)	381	3793	(21)	397	4017	(21)	417	4190	(21)	432	4311	(21)	444
Hispanic	4446	(33)	111	4988	(34)	122	5532	(36)	132	6083	(36)	142	6601	(37)	150	7118	(38)	158	7610	(38)	164	7979	(39)	172
Asian	288	( 2)	26	333	( 2)	29	376	( 2)	32	396	( 2)	32	434	( 2)	34	481	( 3)	37	520	( 3)	39	556	( 3)	42
AI/AN	61	(<1)	216	70	(<1)	267	73	(<1)	279	79	(<1)	282	87	(<1)	300	93	(<1)	310	96	(<1)	310	95	(<1)	307
<b>EXPOSURE CATEGORY (6)</b>																								
MSM	9114	(69)		9785	(68)		10418	(67)		11043	(66)		11584	(66)		12283	(65)		12928	(65)		13318	(65)	
IDU	1061	( 8)		1138	( 8)		1173	( 8)		1235	( 7)		1274	( 7)		1329	( 7)		1354	( 7)		1379	( 7)	
MSM/IDU	948	( 7)		1028	( 7)		1087	( 7)		1150	( 7)		1203	( 7)		1274	( 7)		1326	( 7)		1332	( 6)	
Hemophi/Transfusion	182	( 1)		182	( 1)		180	( 1)		186	( 1)		196	( 1)		198	( 1)		196	( 1)		197	( 1)	
Heterosexual contact	871	( 7)		978	( 7)		1090	( 7)		1204	( 7)		1321	( 7)		1416	( 8)		1526	( 8)		1564	( 8)	
Mother w/at HIV risk	62	(<1)		65	(<1)		66	(<1)		68	(<1)		71	(<1)		75	(<1)		78	(<1)		80	(<1)	
Other/Undetermined	1051	( 8)		1298	( 9)		1558	(10)		1797	(11)		2018	(11)		2257	(12)		2466	(12)		2693	(13)	
<b>Total</b>	<b>13289</b>	<b>(100)</b>	<b>142</b>	<b>14474</b>	<b>(100)</b>	<b>154</b>	<b>15572</b>	<b>(100)</b>	<b>165</b>	<b>16683</b>	<b>(100)</b>	<b>174</b>	<b>17667</b>	<b>(100)</b>	<b>182</b>	<b>18832</b>	<b>(100)</b>	<b>191</b>	<b>19874</b>	<b>(100)</b>	<b>198</b>	<b>20563</b>	<b>(100)</b>	<b>205</b>

1. Includes persons with AIDS whose vital status is unknown.
2. Rates based on less than 20 observations may not be reliable. Rates are based on population estimates (PEPS) from 1997-2003 (see Technical Notes, page 27).
3. Data are provisional due to reporting delay. Rates for 2004 are calculated using PEPS data for 2003.
4. Age as of the end of year.
5. Does not include persons who have multiple races/ethnicities or have missing information on race/ethnicity.
6. Rate for exposure category is not available.



TABLE 19. PERSONS LIVING WITH AIDS (1) AND RATE PER 100,000 (2) AS OF DECEMBER 31, 2004  
 BY SERVICE PLANNING AREA, GENDER, AGE, RACE/ETHNICITY AND EXPOSURE CATEGORY, LOS ANGELES COUNTY

Service Planning Area (3)	Antelope Valley			San Fernando			San Gabriel			Metro			West			South			East			South Bay/LB			Total (4)		
	No.	(%)	Rate	No.	(%)	Rate	No.	(%)	Rate	No.	(%)	Rate	No.	(%)	Rate	No.	(%)	Rate	No.	(%)	Rate	No.	(%)	Rate	No.	(%)	Rate
<b>GENDER</b>																											
Male	182	(85)	109	2392	(90)	230	1195	(84)	134	7180	(94)	1185	989	(91)	317	1587	(80)	326	1105	(85)	167	3081	(88)	401	18365	(89)	373
Female	33	(15)	20	265	(10)	25	223	(16)	24	497	(6)	86	93	(9)	28	405	(20)	78	188	(15)	27	413	(12)	51	2198	(11)	43
<b>AGE GROUP (5)</b>																											
<13	<5	(-)	-	<5	(-)	-	6	(<1)	2	9	(<1)	4	<5	(-)	-	6	(<1)	2	<5	(-)	-	9	(<1)	3	39	(<1)	2
13-19	<5	(-)	-	6	(<1)	3	5	(<1)	3	10	(<1)	9	<5	(-)	-	15	(1)	11	9	(1)	6	10	(<1)	6	63	(<1)	6
20-29	6	(3)	15	88	(3)	31	56	(4)	22	211	(3)	114	31	(3)	33	113	(6)	69	84	(6)	42	148	(4)	71	765	(4)	53
30-39	51	(24)	119	639	(24)	194	408	(29)	154	1963	(26)	887	232	(21)	197	562	(28)	391	382	(30)	190	967	(28)	391	5383	(26)	343
40-49	103	(48)	187	1168	(44)	360	582	(41)	220	3442	(45)	2061	494	(46)	511	790	(40)	656	517	(40)	294	1494	(43)	648	8923	(43)	622
50-59	39	(18)	114	560	(21)	241	252	(18)	124	1573	(20)	1370	257	(24)	324	370	(19)	485	199	(15)	159	679	(19)	409	4069	(20)	395
60+	15	(7)	38	193	(7)	61	109	(8)	38	469	(6)	281	65	(6)	54	136	(7)	127	98	(8)	55	187	(5)	81	1321	(6)	92
<b>RACE/ETHNICITY (6)</b>																											
White	92	(43)	57	1265	(48)	126	347	(24)	77	3208	(42)	1174	644	(60)	154	82	(4)	329	194	(15)	84	1450	(41)	295	7542	(37)	247
Black	63	(29)	118	299	(11)	371	252	(18)	297	1293	(17)	1795	155	(14)	341	1081	(54)	330	88	(7)	209	905	(26)	342	4311	(21)	444
Hispanic	58	(27)	54	979	(37)	123	716	(50)	88	2901	(38)	452	237	(22)	226	815	(41)	129	968	(75)	102	1023	(29)	175	7979	(39)	172
Asian	<5	(-)	-	86	(3)	40	89	(6)	19	195	(3)	100	35	(3)	45	6	(<1)	35	31	(2)	26	99	(3)	43	556	(3)	42
AI/AN	<5	(-)	-	14	(1)	229	7	(<1)	125	41	(1)	1077	6	(1)	390	5	(<1)	272	7	(1)	148	13	(<1)	246	95	(<1)	307
<b>EXPOSURE CATEGORY (7)</b>																											
MSM	110	(51)		1718	(65)		795	(56)		5504	(72)		772	(71)		958	(48)		750	(58)		2284	(65)		13318	(65)	
IDU	28	(13)		177	(7)		122	(9)		325	(4)		52	(5)		194	(10)		86	(7)		311	(9)		1379	(7)	
MSM/IDU	21	(10)		146	(5)		72	(5)		534	(7)		63	(6)		91	(5)		68	(5)		280	(8)		1332	(6)	
Hemophi/Transfusion	<5	(-)		33	(1)		23	(2)		37	(<1)		15	(1)		28	(1)		22	(2)		28	(1)		197	(1)	
Heterosexual contact	21	(10)		192	(7)		164	(12)		329	(4)		60	(6)		280	(14)		139	(11)		338	(10)		1564	(8)	
Mother w/at HIV risk	<5	(-)		5	(<1)		8	(1)		18	(<1)		<5	(-)		18	(1)		10	(1)		13	(<1)		80	(<1)	
Other/Undetermined	32	(15)		386	(15)		234	(17)		930	(12)		117	(11)		423	(21)		218	(17)		240	(7)		2693	(13)	
<b>Total</b>	<b>215</b>	<b>(100)</b>	<b>64</b>	<b>2657</b>	<b>(100)</b>	<b>126</b>	<b>1418</b>	<b>(100)</b>	<b>78</b>	<b>7677</b>	<b>(100)</b>	<b>647</b>	<b>1082</b>	<b>(100)</b>	<b>167</b>	<b>1992</b>	<b>(100)</b>	<b>198</b>	<b>1293</b>	<b>(100)</b>	<b>96</b>	<b>3494</b>	<b>(100)</b>	<b>222</b>	<b>20563</b>	<b>(100)</b>	<b>205</b>

1. Includes persons with AIDS whose vital status is unknown.
2. Rates based on less than 20 observations may not be reliable. Rates are based on year 2003 population estimates (PEPS) (see Technical Notes, page 27).
3. Persons who were diagnosed in 2000 or after are grouped by the modified Service Planning Area boundaries based on 2000 census tracts.
4. Total includes persons with no information on SPA.
5. Age as of December 31, 2004.
6. Does not include cases who have multiple races/ethnicities or have missing information on race/ethnicity.
7. Rate for exposure category is not available.

TABLE 20. ANNUAL DEATHS AMONG AIDS CASES BY AGE GROUP, RACE/ETHNICITY, GENDER EXPOSURE CATEGORY AND SERVICE PLANNING AREA, REPORTED BY JUNE 30, 2005  
LOS ANGELES COUNTY

	Year of Death										Cumulative 1981-2005	
	1999		2000		2001		2002 (1)		2003 (1)			
	No.	%	No.	%	No.	%	No.	%	No.	%	No.	%
<b>AGE AT DEATH</b>												
<13	<5	( - )	<5	( - )	<5	( - )	<5	( - )	<5	( - )	154	( 1 )
13- 19	<5	( - )	<5	( - )	<5	( - )	<5	( - )	<5	( - )	44	( <1 )
20- 29	47	( 7 )	20	( 3 )	30	( 4 )	24	( 4 )	19	( 4 )	2881	( 10 )
30- 39	225	( 32 )	182	( 31 )	187	( 27 )	168	( 28 )	118	( 26 )	11791	( 41 )
40- 49	249	( 36 )	223	( 37 )	260	( 38 )	228	( 38 )	179	( 39 )	8895	( 31 )
50- 59	119	( 17 )	116	( 19 )	131	( 19 )	134	( 22 )	102	( 22 )	3726	( 13 )
60+	50	( 7 )	52	( 9 )	73	( 11 )	47	( 8 )	37	( 8 )	1498	( 5 )
<b>RACE/ETHNICITY</b>												
White	296	( 43 )	223	( 37 )	260	( 38 )	183	( 30 )	151	( 33 )	15454	( 53 )
Black	177	( 26 )	171	( 29 )	202	( 30 )	170	( 28 )	128	( 28 )	5724	( 20 )
Hispanic	203	( 29 )	185	( 31 )	206	( 30 )	229	( 38 )	164	( 36 )	7093	( 24 )
Other (2)	17	( 2 )	16	( 3 )	16	( 2 )	18	( 3 )	12	( 3 )	636	( 2 )
<b>MALE EXPOSURE CATEGORY</b>												
MSM	407	( 59 )	322	( 54 )	382	( 56 )	315	( 52 )	249	( 54 )	21168	( 73 )
IDU	53	( 8 )	52	( 9 )	68	( 10 )	52	( 9 )	30	( 7 )	1545	( 5 )
MSM-IDU	41	( 6 )	49	( 8 )	49	( 7 )	31	( 5 )	39	( 9 )	2020	( 7 )
Heterosexual contact	16	( 2 )	17	( 3 )	20	( 3 )	20	( 3 )	9	( 2 )	326	( 1 )
Other/undetermined (3)	94	( 14 )	82	( 14 )	94	( 14 )	97	( 16 )	74	( 16 )	2124	( 7 )
<b>FEMALE EXPOSURE CATEGORY</b>												
IDU	31	( 4 )	18	( 3 )	28	( 4 )	22	( 4 )	17	( 4 )	489	( 2 )
Heterosexual contact	33	( 5 )	28	( 5 )	22	( 3 )	29	( 5 )	15	( 3 )	708	( 2 )
Other/undetermined (4)	19	( 3 )	27	( 5 )	21	( 3 )	36	( 6 )	24	( 5 )	609	( 2 )
<b>SERVICE PLANNING AREA</b>												
Antelope Valley	6	( 1 )	6	( 1 )	16	( 2 )	6	( 1 )	8	( 2 )	239	( 1 )
San Fernando	96	( 14 )	66	( 11 )	82	( 12 )	77	( 13 )	50	( 11 )	4287	( 15 )
San Gabriel	60	( 9 )	48	( 8 )	51	( 7 )	47	( 8 )	27	( 6 )	2196	( 8 )
Metro	227	( 33 )	216	( 36 )	222	( 32 )	197	( 33 )	151	( 33 )	11406	( 39 )
West	24	( 3 )	19	( 3 )	33	( 5 )	28	( 5 )	20	( 4 )	1741	( 6 )
South	87	( 13 )	92	( 15 )	92	( 13 )	85	( 14 )	81	( 18 )	2807	( 10 )
East	44	( 6 )	32	( 5 )	46	( 7 )	43	( 7 )	36	( 8 )	1551	( 5 )
South Bay/LB	111	( 16 )	91	( 15 )	122	( 18 )	103	( 17 )	69	( 15 )	4083	( 14 )
<b>Total (5)</b>	<b>694</b>	<b>( 100 )</b>	<b>595</b>	<b>( 100 )</b>	<b>684</b>	<b>( 100 )</b>	<b>602</b>	<b>( 100 )</b>	<b>457</b>	<b>( 100 )</b>	<b>28989</b>	<b>( 100 )</b>

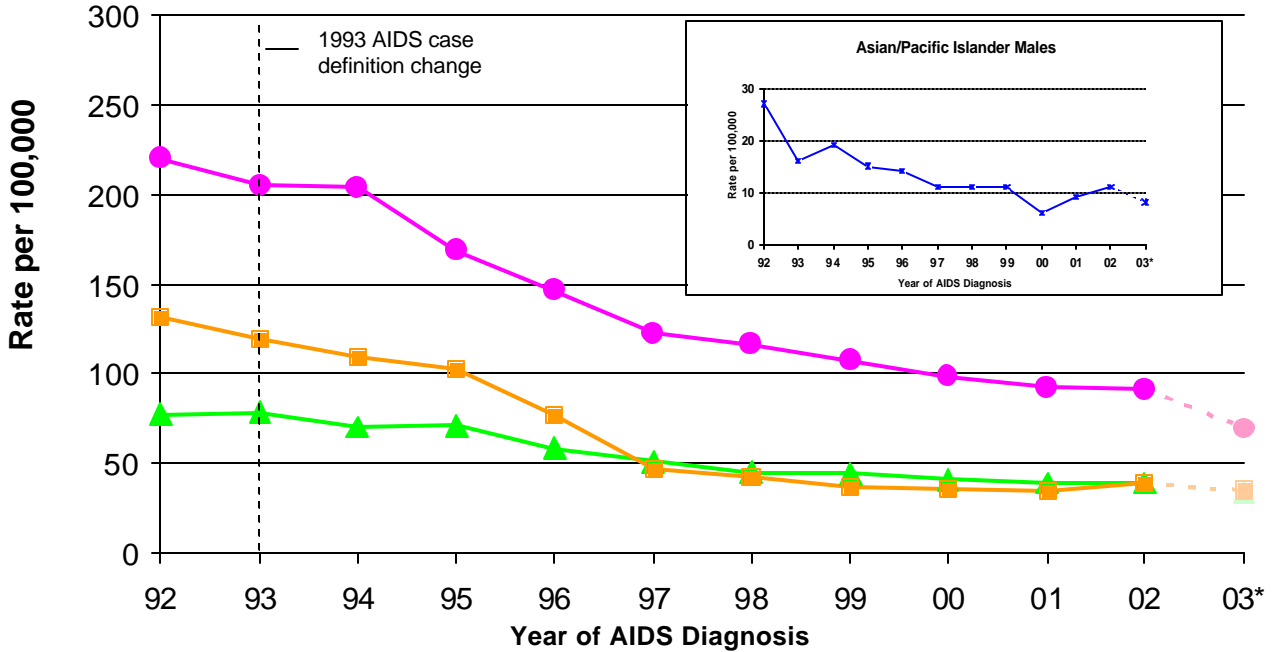
1. Data for 2002 and 2003 death are provisional due to reporting delay.
2. Includes Asian, Pacific Islander, American Indian and Alaskan Native.
3. Includes hemophilia or coagulation disorder, transfusion recipient, mother with/at risk for HIV and risk not specified.
4. Includes transfusion recipient, mother with/at risk for HIV and risk not specified.
5. Includes persons who have multiple races/ethnicities or have missing information on race/ethnicity or service planning area.

TABLE 21. CHARACTERISTICS OF PERSONS REPORTED WITH NON-AIDS HIV (1), JULY 2002 - JUNE 2005,  
LOS ANGELES COUNTY

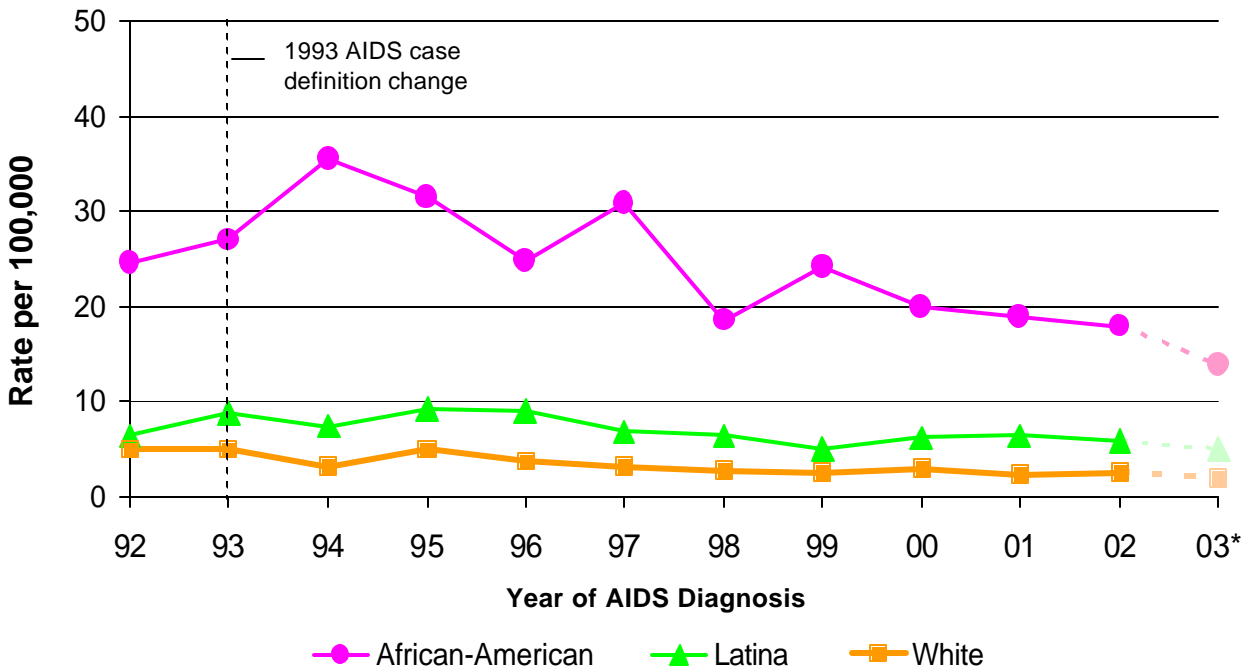
	Number	Percent (%)
<b>GENDER</b>		
Male	11730	84
Female	2091	15
Transgender	153	1
<b>AGE AT TIME OF DIAGNOSIS</b>		
<13	217	2
13- 19	418	3
20- 29	3945	28
30- 39	5554	40
40- 49	2827	20
50- 59	815	6
60+	200	1
<b>RACE/ETHNICITY</b>		
White	5082	36
Black	3364	24
Hispanic	4849	35
Asian/PI	336	2
AI/AN	52	<1
Other/Unknown	293	2
<b>EXPOSURE CATEGORY</b>		
MSM	8365	60
IDU	627	4
MSM/IDU	556	4
Hemophilia/transfusion	67	<1
Heterosexual contact	899	6
Mother w/at HIV risk	186	1
Undetermined	3276	23
<b>SERVICE PLANNING AREA</b>		
Antelope Valley[1]	134	1
San Fernando[2]	1806	13
San Gabriel [3]	822	6
Metro[4]	5852	42
West[5]	749	5
South[6]	1636	12
East[7]	773	6
South Bay/Long Beach[8]	2184	16
<b>Total (2)</b>	<b>13976</b>	<b>100</b>

1. Data are provisional due to reporting delay.
2. Includes persons who have multiple race/ethnicities or have missing information on race/ethnicity, gender, or service planning area.

**FIGURE 4. MALE ADULT/ADOLESCENT AIDS RATES<sup>1</sup> BY RACE/ETHNICITY<sup>2</sup> AND YEAR OF DIAGNOSIS, LOS ANGELES COUNTY, 1992-2003**



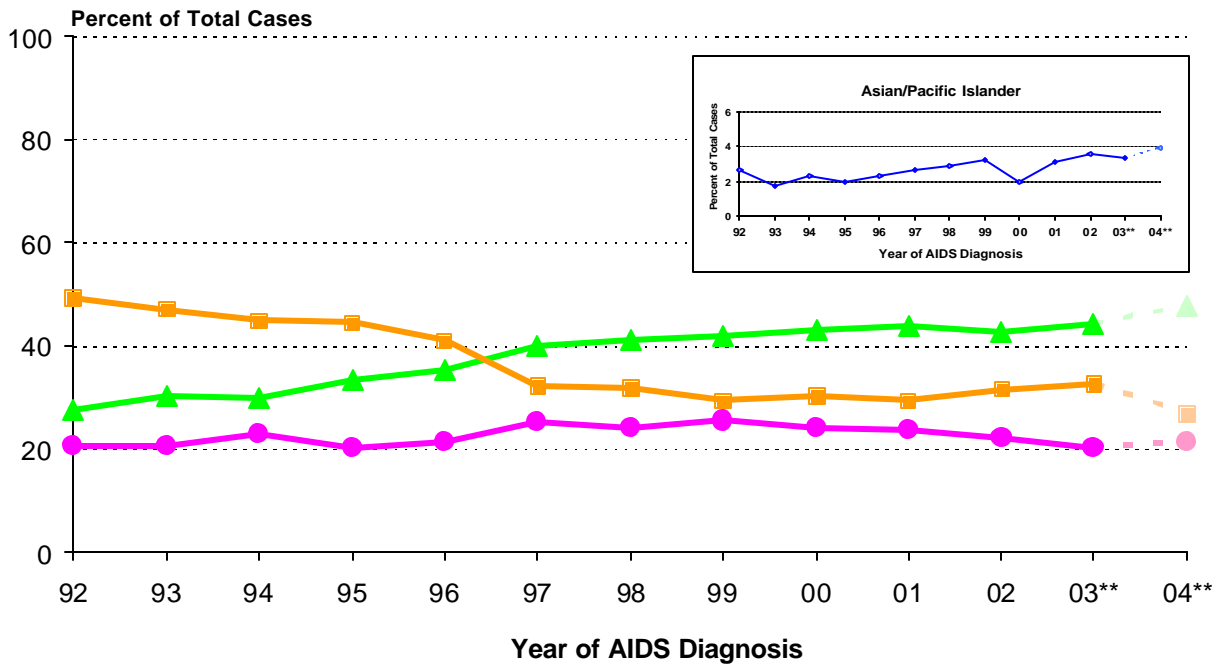
**FIGURE 5. FEMALE ADULT/ADOLESCENT AIDS RATES<sup>1</sup> BY RACE/ETHNICITY<sup>2</sup> AND YEAR OF DIAGNOSIS, LOS ANGELES COUNTY, 1992-2003**



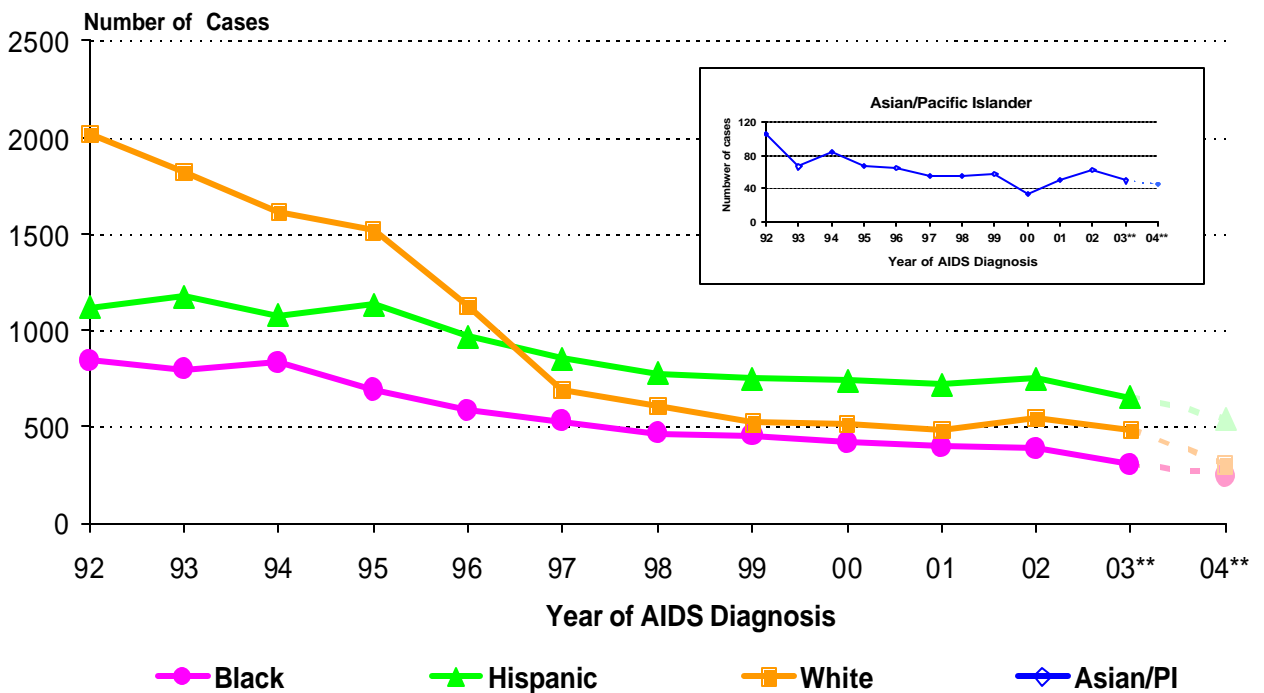
1. AIDS rates are calculated using the population estimates (PEPS) based on both 1990 and 2000 census.  
 2. AIDS rates for Asian/Pacific Islander females, Native Americans and Alaskan Natives are not presented here because small numbers may result in unstable estimates.

\* Data are provisional due to reporting delay.

**FIGURE 6. PERCENT OF ADULT/ADOLESCENT AIDS CASES BY RACE/ETHNICITY\* AND YEAR OF DIAGNOSIS, LOS ANGELES COUNTY, 1992-2004**



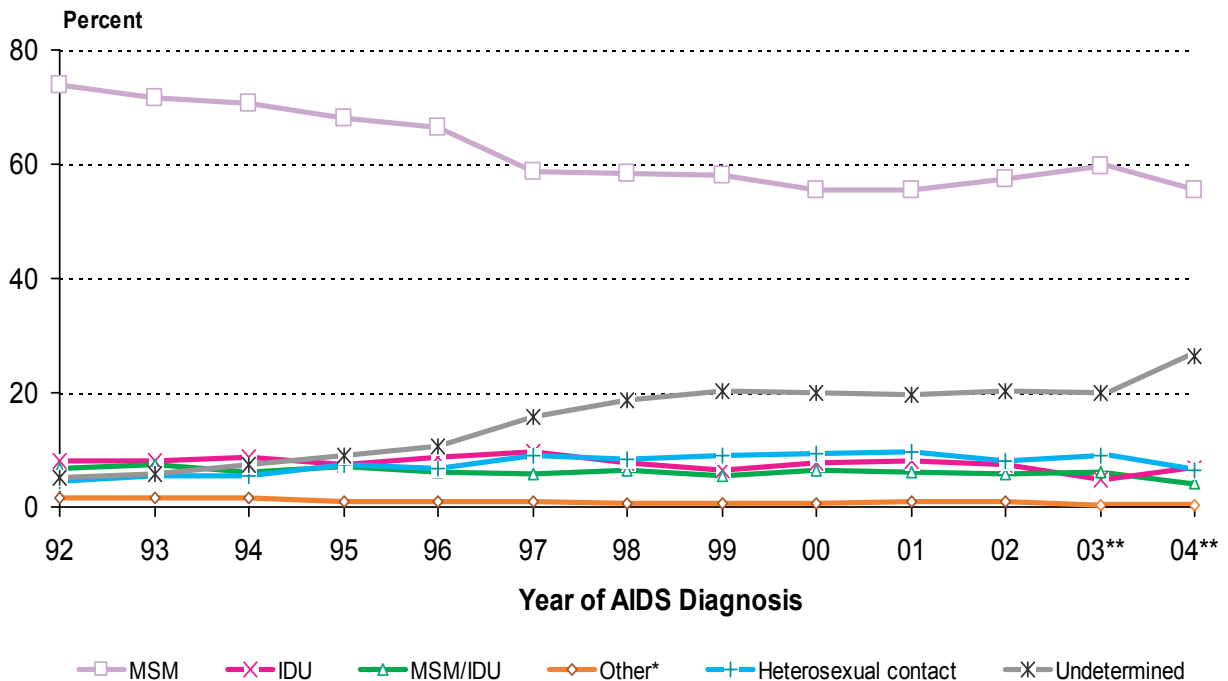
**FIGURE 7. NUMBER OF ADULT/ADOLESCENT AIDS CASES BY RACE/ETHNICITY\* AND YEAR OF DIAGNOSIS, LOS ANGELES COUNTY, 1992-2004**



\* American Indian and Alaskan Native are not presented here because small numbers may result in unstable estimates.

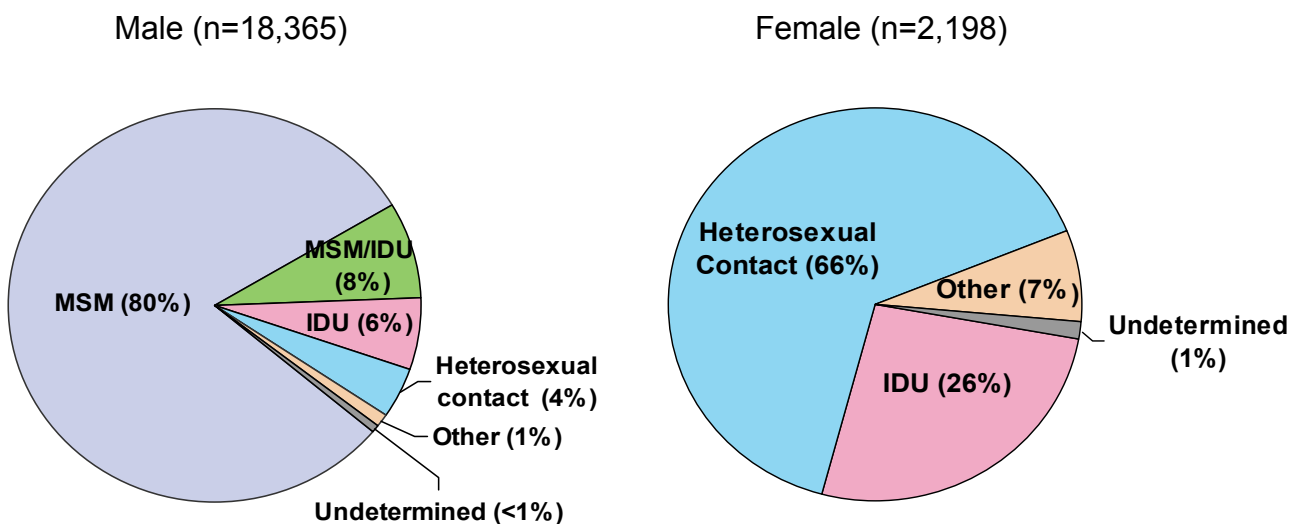
\*\* Data are provisional due to reporting delay.

**FIGURE 8. PERCENT OF ADULT/ADOLESCENT AIDS CASES BY MODE OF EXPOSURE AND YEAR OF DIAGNOSIS, LOS ANGELES COUNTY, 1992-2004**



\* Other risks include hemophilia or coagulation disorder, transfusion recipient, mother with/at risk for HIV, and confirmed other risk.  
 \*\* Data are provisional due to reporting delay.

**FIGURE 9. ADJUSTED MODE OF EXPOSURE<sup>1</sup> FOR ADULTS/ADOLESCENTS LIVING WITH AIDS AS OF DECEMBER 31, 2004 BY GENDER IN LOS ANGELES COUNTY**



1. Persons who had no reported risk for HIV infection had been redistributed to a valid mode of exposure category based on the distribution of reclassified cases reported from 1993-2002 (see technical notes, page 27).

## Appendix 1: 1993 Revised Classification System for HIV Infection<sup>1</sup> and Expanded Surveillance Case Definition for Adolescents and Adults<sup>2</sup>

CD4+ T-cell Categories	Clinical categories		
	(A) Asymptomatic, acute (primary) HIV or PGL <sup>3</sup>	(B) Symptomatic, not (A) or (C) conditions	(C) AIDS-indicator conditions
(1) ≥500/μL	A1	B1	C1
(2) 200-499/μL	A2	B2	C2
(3) <200/μL AIDS-indicator T-cell count	A3	B3	C3

<sup>1</sup> Criteria for HIV infection for persons ages ≥13 years: a) repeatedly reactive screening test for HIV antibody (e.g., enzyme immunoassay) with specific antibody identified by the use of supplemental tests (e.g., Western blot, immunofluorescence assay); b) direct identification of virus in host tissues by virus isolation; c) HIV antigen detection; or d) a positive result on any other highly specific licensed test for HIV.

<sup>2</sup> The shaded cells illustrate the expanded AIDS surveillance case definition. Persons with an AIDS-indicator condition (Category C) as well as those with CD4+ T-lymphocyte counts <200/μL (Categories A3 or B3) are reportable as AIDS cases in the United States and Territories, effective January 1, 1993.

<sup>3</sup> PGL=persistent generalized lymphadenopathy.

### Clinical Conditions Included in the 1993 AIDS Surveillance Case Definition

---

- Candidiasis of bronchi, trachea, or lungs
- Candidiasis, esophageal
- Cervical cancer, invasive\*
- Coccidioidomycosis, disseminated or extrapulmonary
- Cryptococcosis, extrapulmonary
- Cryptosporidiosis, chronic intestinal (>1 month duration)
- Cytomegalovirus disease (other than liver, spleen, or nodes)
- Cytomegalovirus retinitis (with loss of vision)
- Encephalopathy, HIV-related
- Herpes simplex: chronic ulcer(s) (>1 month duration) or bronchitis, pneumonitis, or esophagitis
- Histoplasmosis, disseminated or extrapulmonary
- Isosporiasis, chronic intestinal (>1 month duration)
- Kaposi's sarcoma
- Lymphoma, Burkitt's (or equivalent term)
- Lymphoma, immunoblastic (or equivalent term)
- Lymphoma, primary in brain
- *Mycobacterium avium* complex or *M. kansasii*, disseminated or extrapulmonary
- *Mycobacterium tuberculosis*, any site (pulmonary\* or extrapulmonary)
- *Pneumocystis carinii* pneumonia
- Pneumonia, recurrent\*
- Progressive multifocal leukoencephalopathy
- *Salmonella* septicemia, recurrent
- Toxoplasmosis of brain
- Wasting syndrome due to HIV

\* Added in the 1993 expansion of the AIDS surveillance case definition.

## **Appendix 2: Technical Notes**

### **Report Delay**

Report delay is defined as the time interval between the date an AIDS diagnosis was made and the date the case was reported. The median report delay for all cases reported in 2004 was 10 months (range 0 to 356 months), an increase of 4 months compared to all cases reported in 2002. The extended time period for reporting delay may be artificial as more older cases were discovered after the implementation of mandatory HIV reporting in July 2002, which requires laboratories to report. The impact of report delay must be considered when evaluating trends in case numbers and rates over time (Figure 1-8, Tables 1, 4-8, 10, 13-14, and 18).

### **Rates**

For Figure 4-5, Table 4, Table 13- 15, and Table 17-19 , AIDS case rates are calculated using population estimates (PEPS) for 1991-2003 that were smoothed and projected by Dr. John Hedderson and Joyce Bixler of Walter R. McDonald & Associates of Sacramento, California, using 1990 and 2000 census data. Conforming to standard criterion used by the National Center for Health Statistics, rates are considered unreliable when the relative standard error of the rate is greater than or equal to 23%--that is, when rates are based on less than 20 observations.

### **Race and ethnicity**

Mandated collection of race and ethnicity data was implemented in January 1, 2003 as required by the OMB Statistical Policy Directive 15. A minimum of 5 race categories should be collected including American Indian or Alaska Native; Asian; black or African American, Native Hawaiian or Other Pacific Islander; and white. Additionally, systems must be able to retain information when multiple racial categories are reported. Two ethnicity categories should be collected regardless of race: Hispanic and non-Hispanic.

Race and Ethnicity in this report are grouped using the following criteria exclusively: A record is considered to be 'Hispanic' if so indicated in race or ethnicity field, regardless of any other race information found on the record. When not indicated as 'Hispanic', a record is considered to be 'American Indian/Alaskan Native' if the race field contains AI/AN information, regardless of any other race information found on the record. A record is considered to be 'Asian/Pacific Islander' when either indicated as Asian or Native Hawaiian/Pacific Islander, or both in the race fields. Aside from the above criteria, a record is categorized as 'Multi-race' when more than one race are indicated in the above race fields. All other records with a single race indicated are placed in the corresponding race category. Persons with multiple racial categories or unknown race are included in the total numbers in Table 2-4, Table 11 and Table 15-20.

### **Exposure Categories**

Exposure categories are assigned in a hierarchical fashion (listed from highest to lowest in the column headed "Exposure Category"). Cases for which more than one exposure category have been identified are assigned to the category listed highest in the hierarchy. For example, a man who reports sexual contact with another man and heterosexual contact with an HIV-positive woman would be classified as "male-male sexual contact." The only exception to this rule includes those men who report both sexual contact with another man and injection-drug use. A separate exposure category has been created for these cases.

The "Undetermined" exposure category includes persons with no history of exposure to HIV through one of the defined exposure categories. Cases reported as undetermined include some persons still under investigation. If the investigation identifies a mode of exposure, the case is reclassified into the corresponding exposure category. Because recently reported AIDS cases are more likely to be reported without sufficient risk factor information, recent AIDS incidence in some transmission categories will be underestimated unless an adjustment is made. For figures that show the distribution of AIDS cases by adjusted mode of exposure, persons who had no reported risk for HIV exposure were redistributed to other valid exposure categories based on the sex-, and race-specific distribution of the cases reported from 1993 to 2002 and reclassified to a valid exposure category.

### **AIDS-Indicator Conditions**

At the time of initial case report, all available information about AIDS-defining conditions is collected. However, after a case has been reported, systematic follow-up is not done to identify subsequent AIDS-defining conditions. Therefore, the information presented in Table 12 reflects initial AIDS-defining condition(s) and should be considered a minimum estimate of all AIDS-defining conditions.



All persons meeting the CDC AIDS case or HIV definition are reportable as required by the *California Code of Regulations, Title 17, Section 2500/2600*. If you have questions on how to report a case, would like a case report form and/or information on the case definition, would like assistance establishing an HIV/AIDS surveillance system, or receive the semi-annual surveillance summary and other periodic reports, contact the HIV Epidemiology Program at the address below:

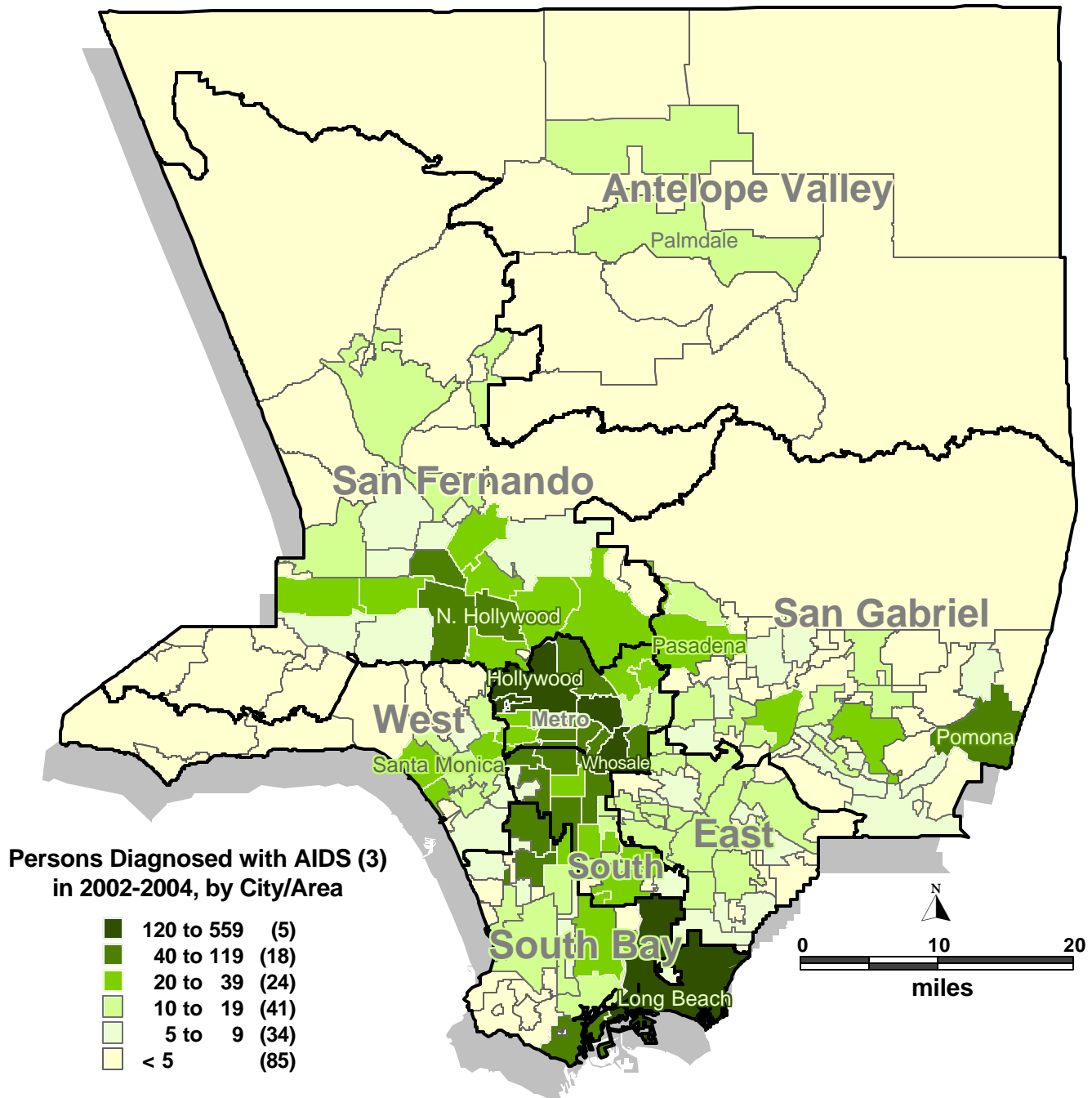
HIV Epidemiology Program  
Los Angeles County Department of Health Services  
600 South Commonwealth Avenue, Suite 1260  
Los Angeles, California 90005  
Phone: (213) 351-8516  
FAX: (213) 487-4683  
Email: [hivepiemail@ladhs.org](mailto:hivepiemail@ladhs.org)

## **DOCUMENTING HIV RISK (MODE OF HIV EXPOSURE)**

*Timely information on transmission risk for persons diagnosed with HIV and AIDS is important for HIV prevention planning and resource allocation.*

- ✓ In over 20% of persons reported with HIV and AIDS, providers did not document and/or report a mode of exposure to HIV.
- ✓ The diagnosing provider should always ask patients and clients about their HIV exposure risks and document them in both the medical record and the case report form.
- ✓ Exposure categories for HIV transmission include:
  1. Men who have sex with men
  2. Recreational injection drug users
  3. Recipients of blood transfusions, organ/other tissue transplants
  4. Sexual partners of HIV-infected persons
  5. Sexual partners of injection drug users
  6. Female sexual partners of men who have sex with men
  7. Sexual partners of persons with clotting disorders, hemophiliacs
  8. Infants born of and/or breast-fed by HIV-infected women

**FIGURE 10. PERSONS DIAGNOSED WITH AIDS IN 2002-2004(1)  
BY CITY/AREA(2) AND SERVICE PLANNING AREA (SPA)  
IN LOS ANGELES COUNTY (N=4,420)**



1. Data are provisional due to reporting delay.
2. City of Los Angeles is broken down into "areas" or geographical units. Residence is based on address at the time of AIDS diagnosis.
3. Does not include 323 persons (7%) who had no specific address at the time of AIDS diagnosis.