

## TITLE V INDICATOR TEMPLATES

**INDICATOR:** Percent of mothers who intend to exclusively breastfeed their infants at hospital discharge

**NUMERATOR:** Number of mothers who express their intent to exclusively breastfeed their infant at hospital discharge, by place of residence

**DENOMINATOR:** Total number of live births for whom the new born genetic screening form is completed, by place of residence

**HEALTHY PEOPLE 2000 OBJECTIVE:**

Increase to at least 75% the proportion of mothers who breast-feed their babies in the early post-partum period. (Objective 2.11 &14.9)

**RISK FACTORS FOR NOT INTENDING TO BREASTFEED:**

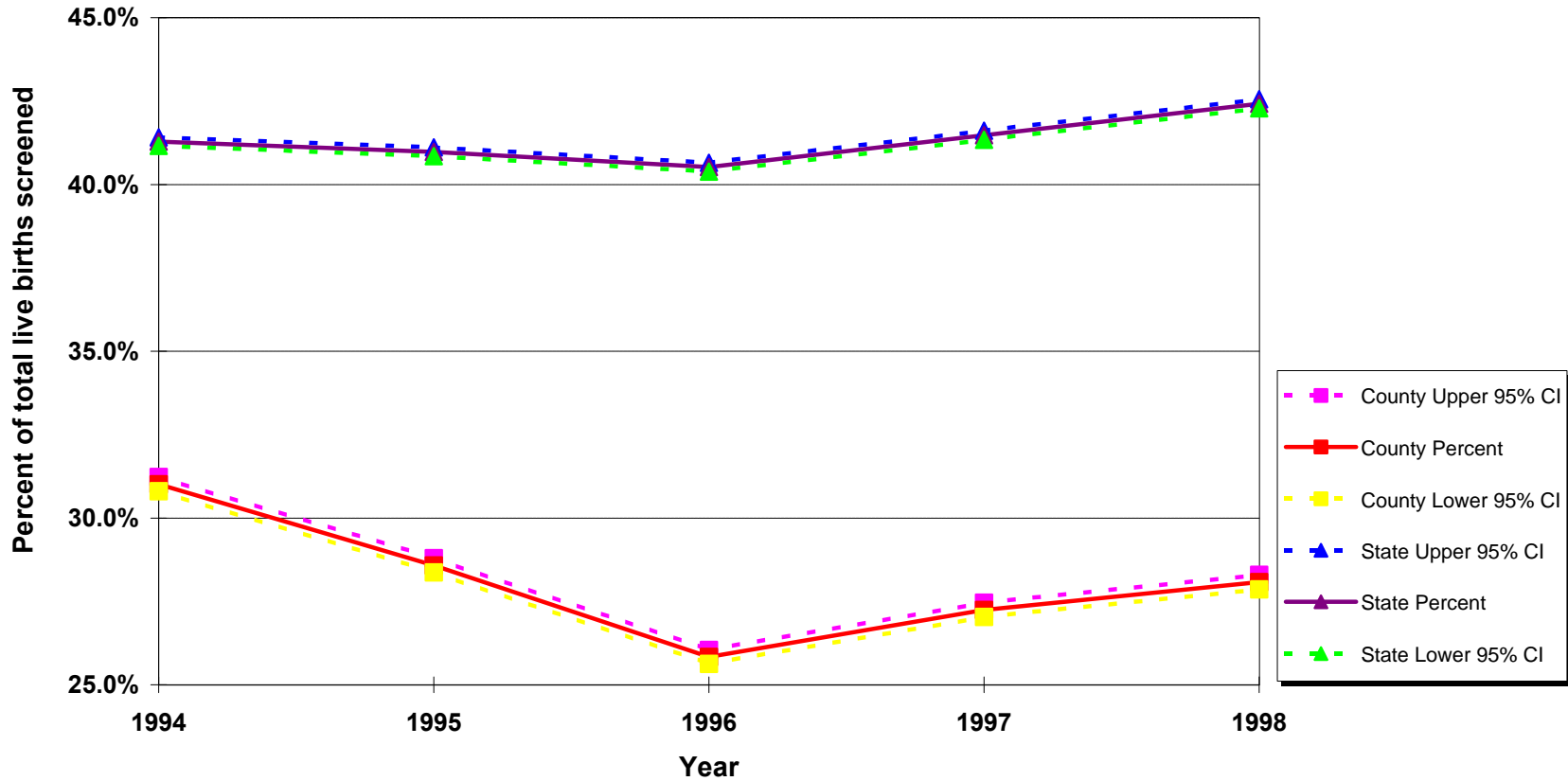
Working mothers, lack of prenatal care, lack of prenatal WIC services, lower maternal education level, low income, Southeast Asian ethnicity, black race, less than 20 years of age.

	California				LA County				DENOMINATOR: Newborns Screened	
	Year	Number	Percent	95% Confidence Interval		Number	Percent	95% Confidence Interval		
Lower				Upper	Lower			Upper	State	County
1994	228,343	41.3%	41.2%	41.4%	55,787	31.0%	30.8%	31.2%	553,102	179,870
1995	220,589	41.0%	40.8%	41.1%	49,775	28.6%	28.4%	28.8%	538,296	174,146
1996	213,959	40.5%	40.4%	40.7%	43,683	25.8%	25.6%	26.0%	528,033	169,077
1997	213,949	41.5%	41.3%	41.6%	44,300	27.2%	27.0%	27.5%	515,853	162,583
1998	218,116	42.4%	42.3%	42.6%	44,885	28.1%	27.9%	28.3%	514,167	159,853

**Note:** These data represent in-hospital breastfeeding choices as indicated on the newborn screening form. The breastfeeding choices include: breastfed only, both formula&breastfed, breastfed only, non-breastfed and unknown. Between 1994 to 1998, the rates for formula and breastfed increased from 71% to 77%.

**Sources:** Newborn Screening Test data prepared by the Epidemiology and Evaluation Section, Maternal and Child Health Branch, California Department of Health Services

## Percent of Mothers who Intend to Exclusively Breastfeed Their Infants at Hospital Discharge County vs. California 1994 - 1998



**Note:** These data represent in-hospital breastfeeding choices as indicated on the newborn screening form. The breastfeeding choices include: breastfed only, both formula&breastfed, breastfed only, non-breastfed and unknown. Between 1994 to 1998, the rates for formula and breastfed increased from 71% to 77%.

**Source:** Newborn Screening Test data prepared by the Epidemiology and Evaluation Section, Maternal and Child Health Branch, California Department of Health Services