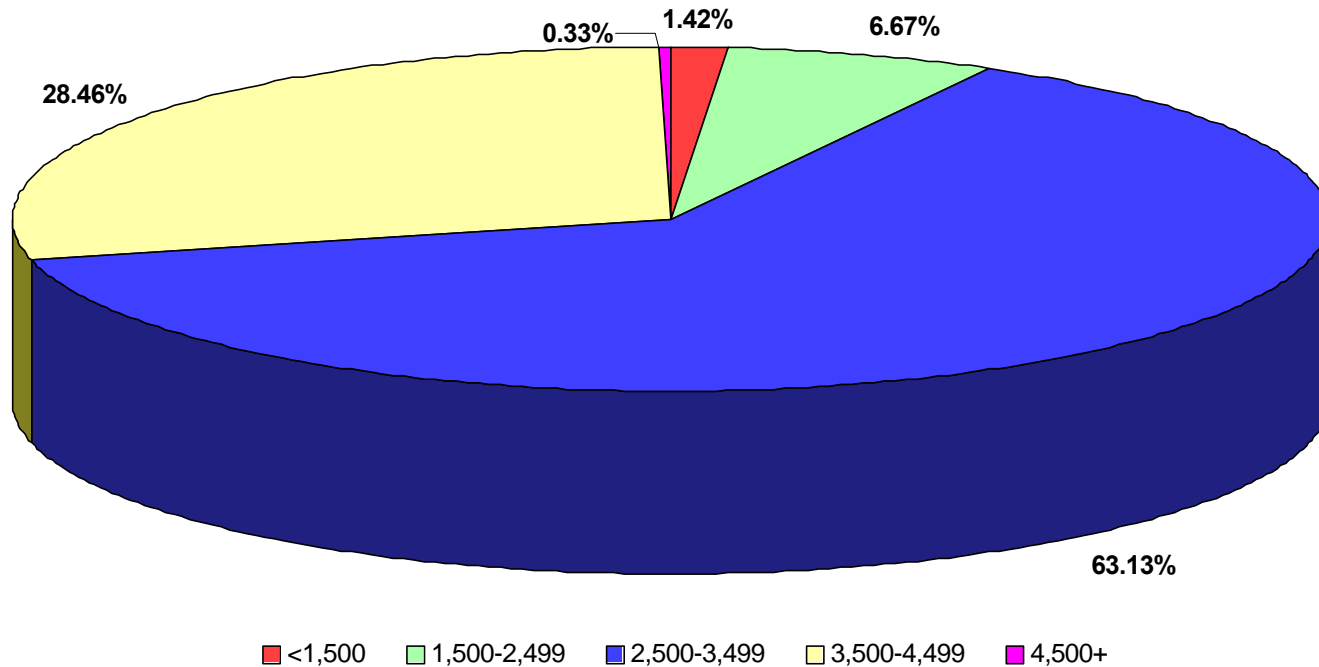


**Percent of Live Births to Mothers Less Than 17 Years Old by Birthweight**  
**Los Angeles County, 1999**



Birthweight (grams)									
<1,500		1,500-2,499		2,500-3,499		3,500-4,499		4,500+	
Number	Percent	Number	Percent	Number	Percent	Number	Percent	Number	Percent
47	1.42	221	6.67	2,092	63.13	943	28.46	11	0.33

Note: Total live births to mothers less than 17 years old in Los Angeles County, 1999 = 3,314  
 Source: 1999 birth records from the California Department of Health Services,  
 Center for Health Statistics