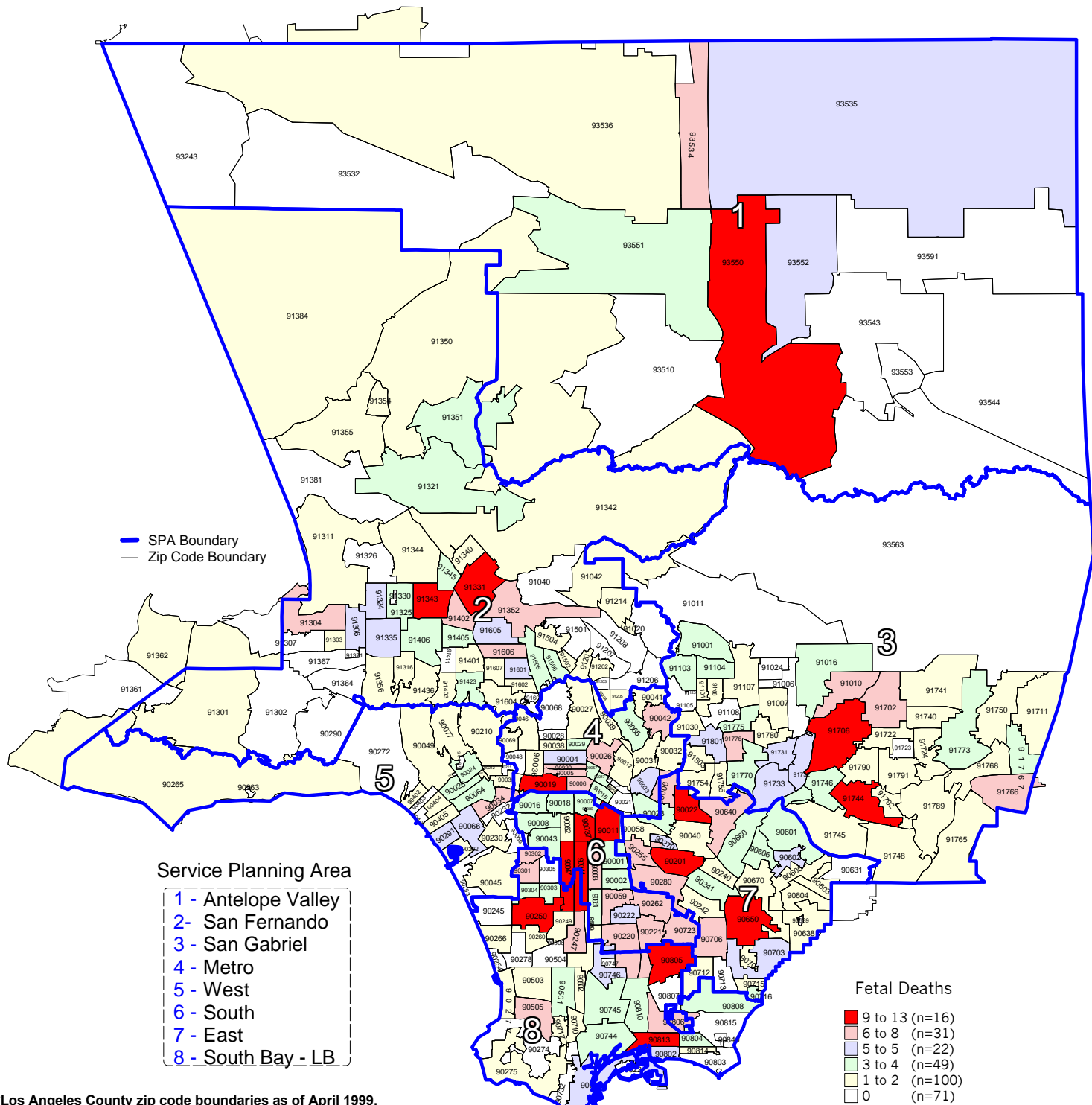


# Number of Fetal Deaths by Zip Code\* and Service Planning Area (SPA)

Los Angeles County, 1999



\*Los Angeles County zip code boundaries as of April 1999.

Total number of live births in Los Angeles County, 1999 = 156,133  
Total number of fetal deaths in Los Angeles County, 1999 = 801

Note: Fetal death is defined as death occurring during 20 weeks or more gestational period.

Source: 1999 birth records from California Department of Health Services, Center for Health Statistics

n = total number of zip codes in range