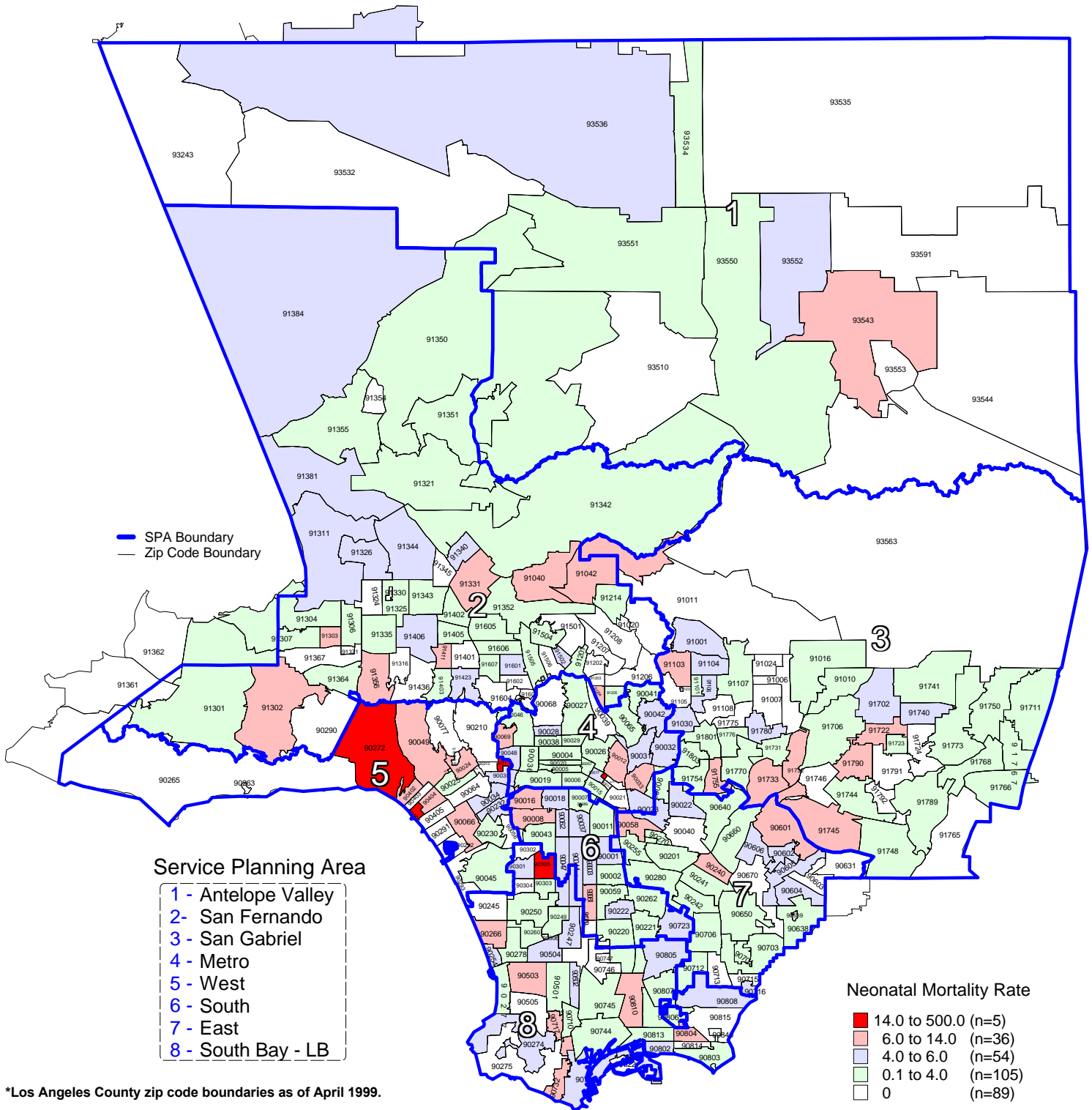


# Neonatal Mortality Rate by Zip Code\* and Service Planning Area (SPA)

Los Angeles County, 1999



\*Los Angeles County zip code boundaries as of April 1999.

Total number of live births in Los Angeles County, 1999 = 156,153  
Total number of Neonatal deaths in Los Angeles County, 1999 = 561

Note: Neonatal mortality rate is defined as deaths occurring less than 28 days per 1,000 live births.

Source: 1999 birth records from California Department of Health Services, Center for Health Statistics

n = total number of zip codes in range

Year 2000 Objective: Reduce the neonatal mortality rate to no more than 4.5 per 1,000 live births.