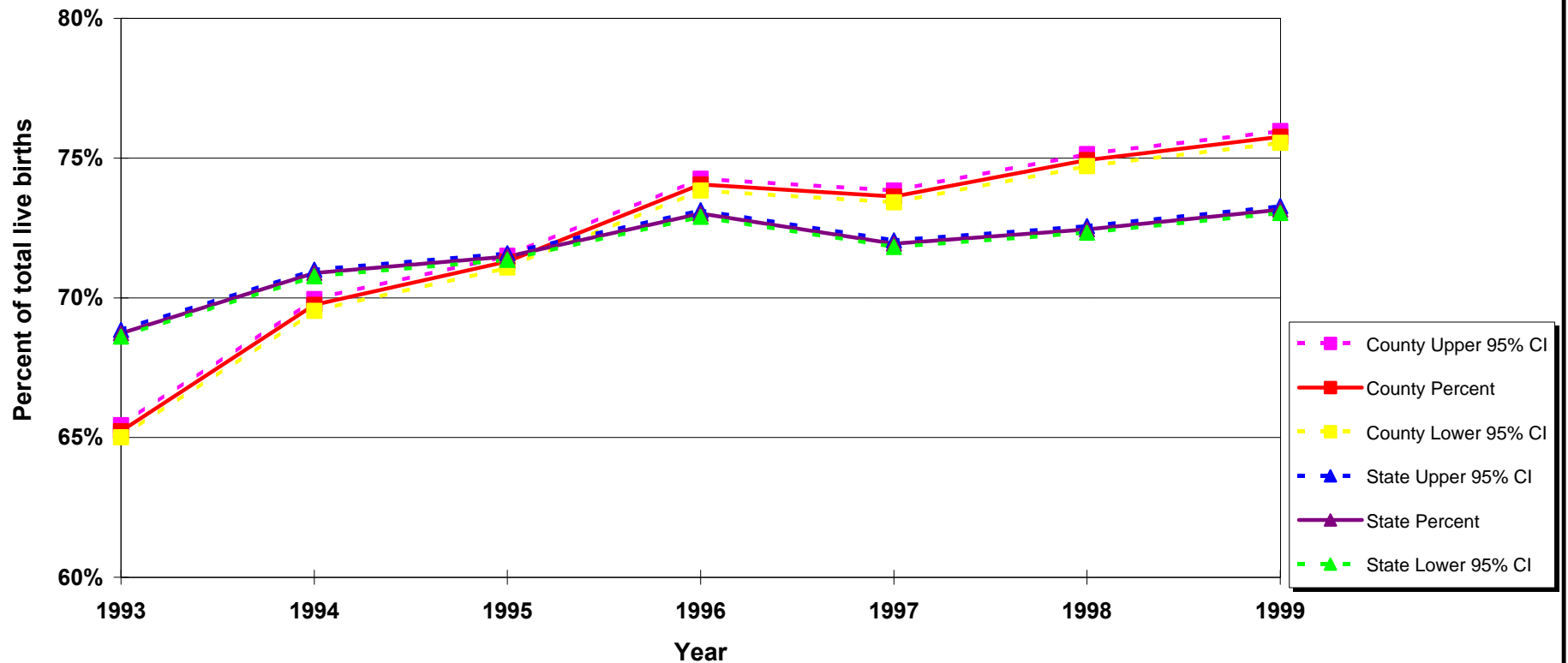


Percent of Total Live Births Whose Mothers Received "Adequate" Prenatal Care as Rated by Kotelchuck Index (APNCU) California vs. Los Angeles County, 1993 through 1999



Source: 1993-1999 birth records from the California Department of Health Services, Center for Health Statistics

Notes: The APNCU Index attempts to characterize prenatal care utilization on two independent and distinctive dimensions: Adequacy of Initiation of Prenatal Care and Adequacy of Received Services (once prenatal care has begun). The initial dimension, Adequacy of Initiation of Prenatal Care, characterizes the adequacy of the timing of initiation of care (month prenatal care began). The second dimension, Adequacy of Received Services, characterizes the adequacy of prenatal care visits (number of visits) received during the time the mother is actually in prenatal care (from initiation until the delivery). The adequacy of prenatal visits is based on the recommendations established by the American College of Obstetricians and Gynecologists.