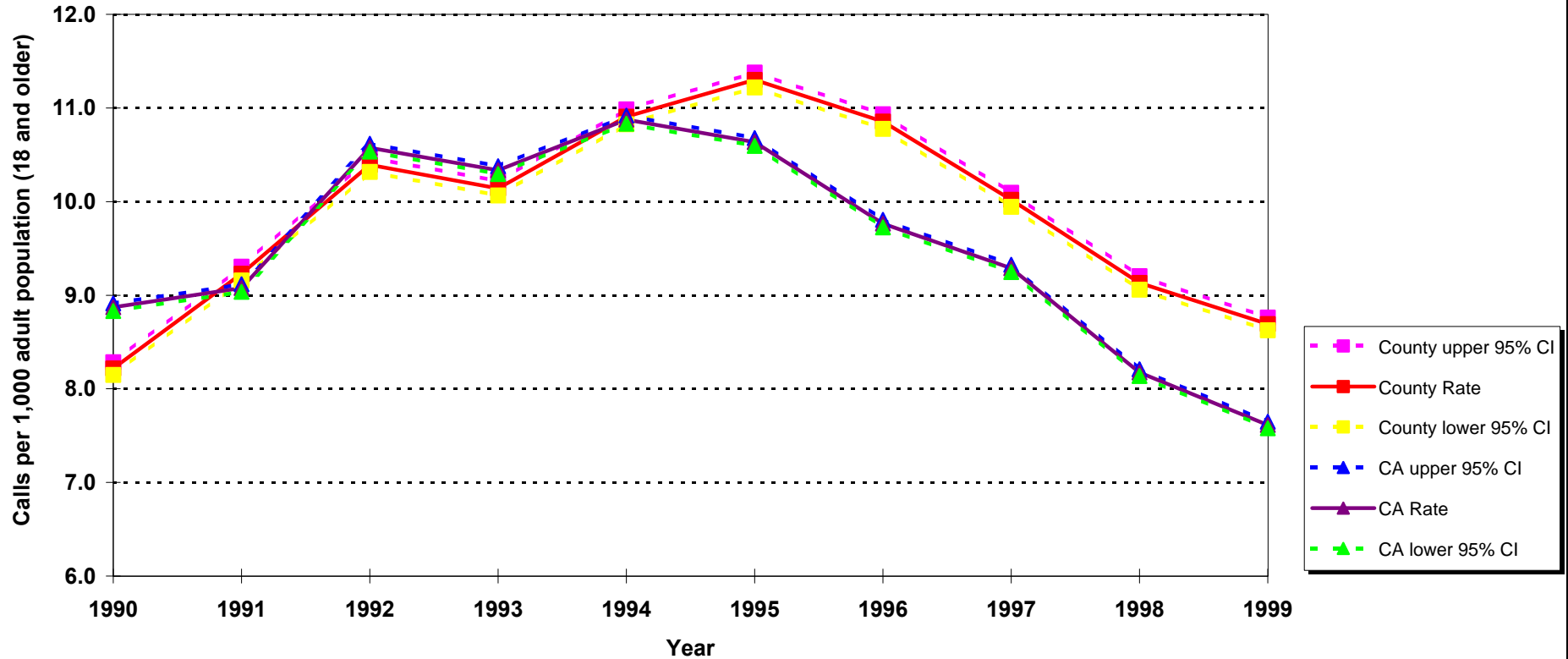


Domestic Violence Calls to Law Enforcement Agencies per 1,000 Adult Population Ages 18 and Older California vs. Los Angeles County, 1990 - 1999



Source: Special Report, "Total Domestic Violence Calls Received by Type of Weapon, by County, 1990-1998, California Department of Justice, Division of Law Enforcement, Law Enforcement Information Center.
Criminal Justice Profile, 1999, Crime and Delinquency in California, California Department of Justice, Division of California Justice, Division of California Justice Information Services, Criminal Justice Statistics Center
Denominator data: State of California, Department of Finance, 1970-2040 Race/Ethnic Population Estimates for Counties with Age and Gender Detail, Sacramento, California, December, 1998