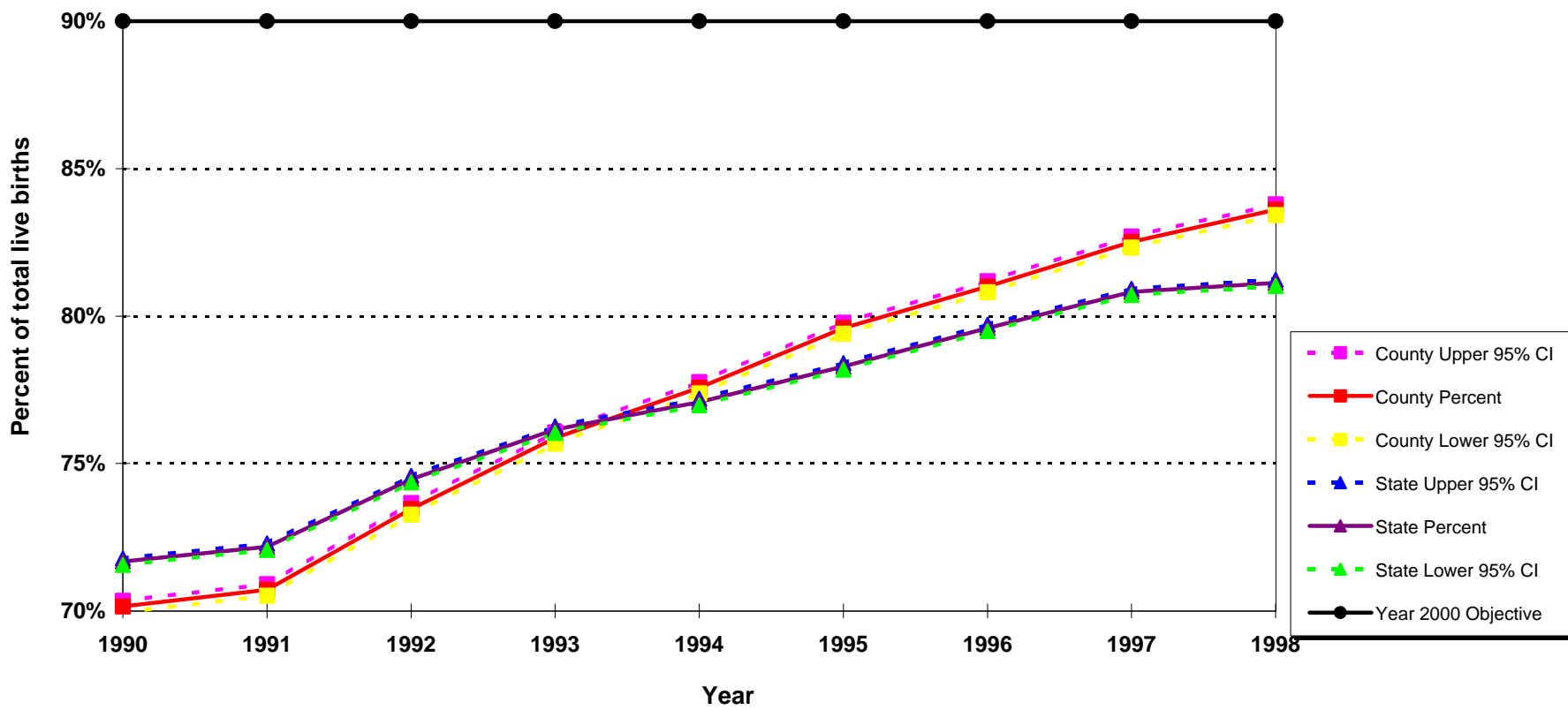


### Percent First Trimester Onset of Prenatal Care California vs. Los Angeles County, 1990 - 1998



**Year 2000 Objective:** Increase to at least 90 percent the proportion of all pregnant women who receive prenatal care in the first trimester of pregnancy.

**Source:** 1990-1998 birth records from California Department of Health Services, Center for Health Statistics