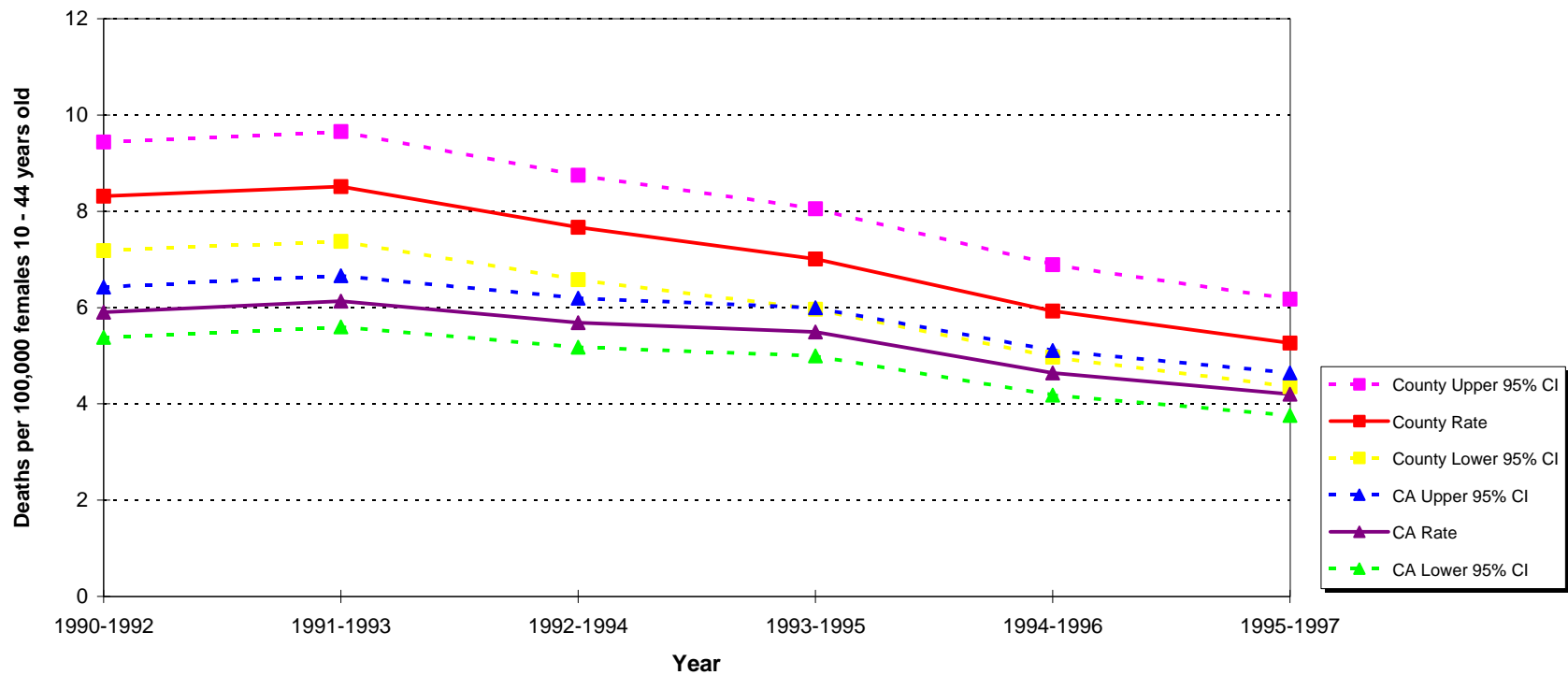


Homicides per 100,000 Females ages 10 - 44 years California vs. Los Angeles County Three-Year Averages 1990 - 1997



Note: Because there is no domestic violence-specific external cause of injury (E-Code) in the current International Classification of Diseases, 9th Revision (ICD-9) clinical modification coding, the numerator in this template reflects deaths due to all types of assaults (E960-E969).

Source: 1990-1997 death records from the California Department of Health Services, Center for Health Statistics
Denominator data: State of California, Department of Finance, 1970-2040 Race/Ethnic Population Estimates for Counties with Age and Gender Detail, Sacramento, California, December, 1998