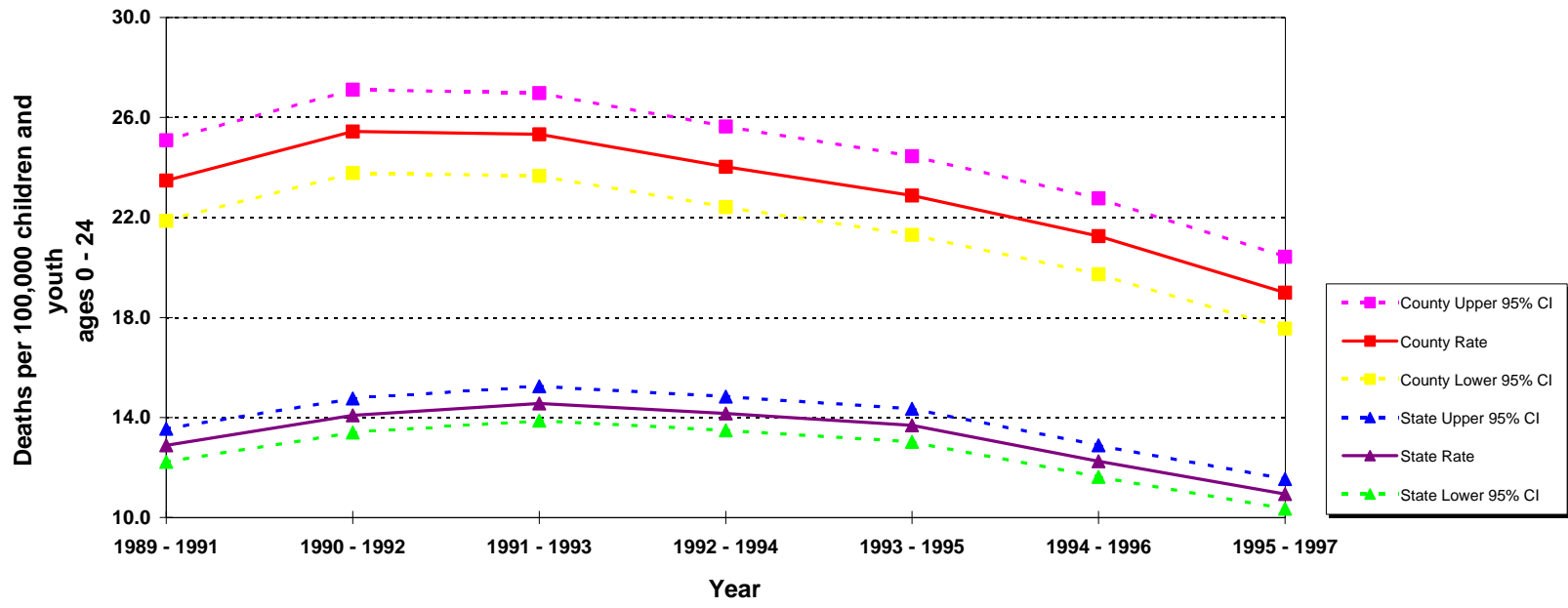


**Deaths Due to Assaultive Injuries (Homicide)
per 100,000 Among Ages 0 - 24 Years
California vs. Los Angeles County
Three Year Averages: 1989 through 1997**



Sources: 1989-1997 death records from California Department of Health Services, Center for Health Statistics
Denominator data: State of California, Department of Finance, Race/Ethnic Population Estimates with Age and Sex Details, 1970-2040, Sacramento, California, December, 1998