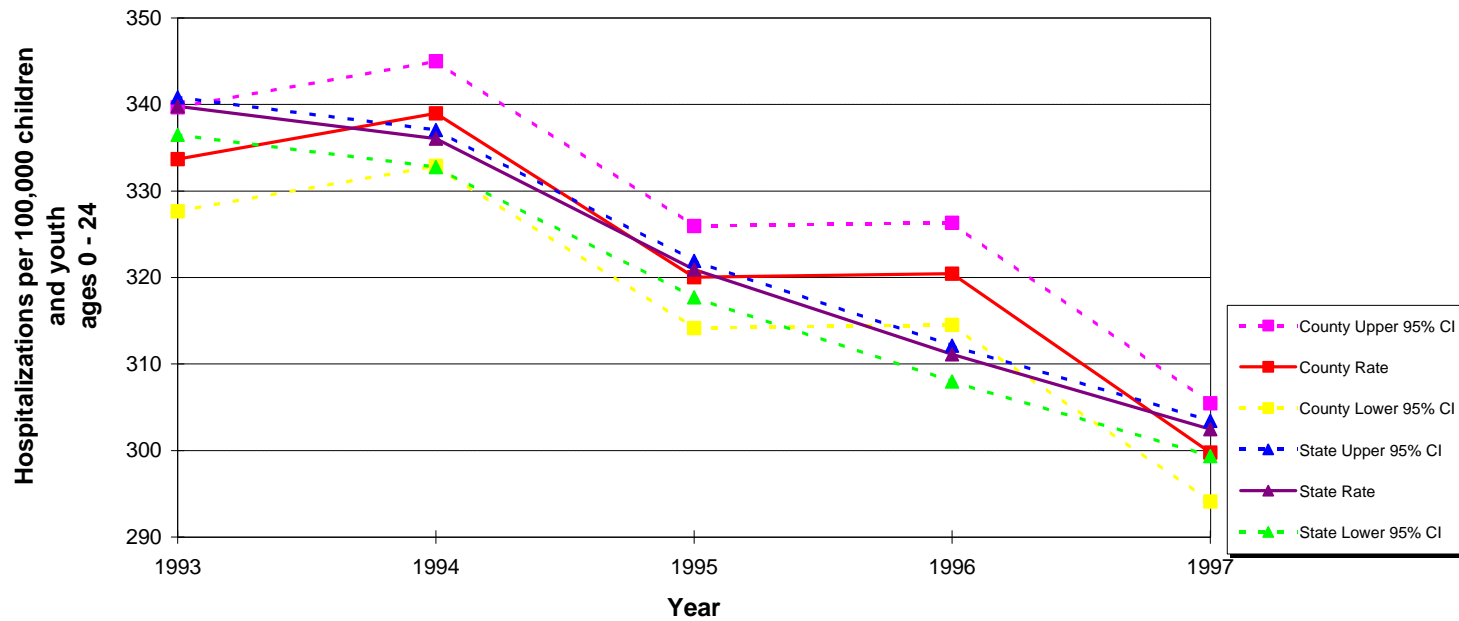


**Hospitalizations Due to Unintentional Injuries
per 100,000 Children and Youth Ages 0 - 24 Years
California vs. Los Angeles County, 1993 - 1997**



Sources: 1993-1997 Hospitalized Injury Surveillance System (HISS) from the California Department of Health Services, Injury Surveillance and Epidemiology Section, Epidemiology and Prevention for Injury Control Branch
State of California, Department of Finance, 1970-2040 Race/Ethnic Population Estimates for Counties with Age and Gender Detail, Sacramento, California, December, 1998