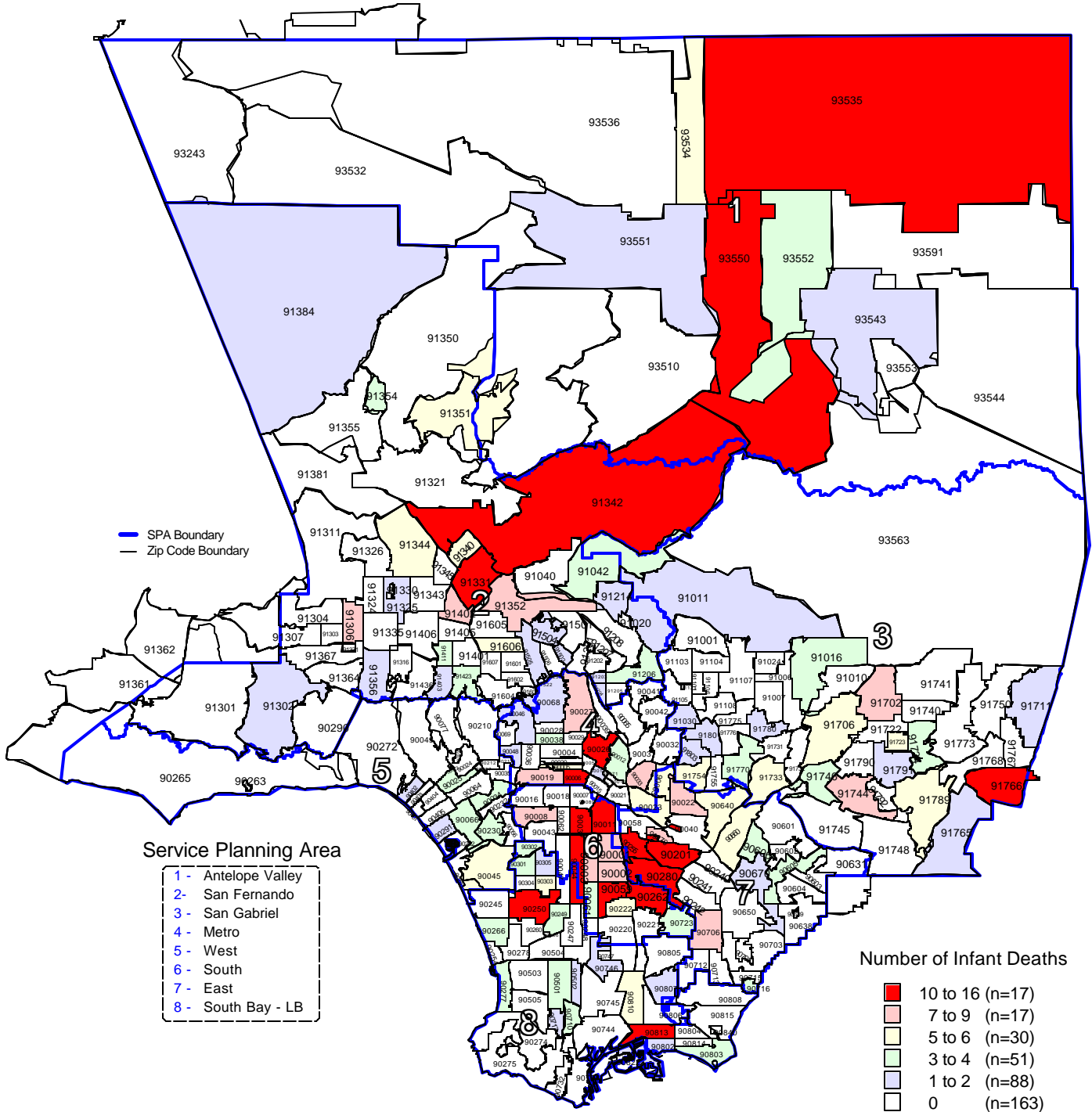


Number of Infant Deaths by Zip Code* and Service Planning Area (SPA)

Los Angeles County, 2001



* Los Angeles County zip code boundaries as of April 2001.

n = total number of zip codes in range

Total number of live births in Los Angeles County, 2001 = 153,523

Total number of Infant deaths in Los Angeles County, 2001 = 828

Note: Infant death is defined as death occurring at less than 365 days of age

Source: California Department of Health Services
Center for Health Statistics, Vital Statistics, 2001