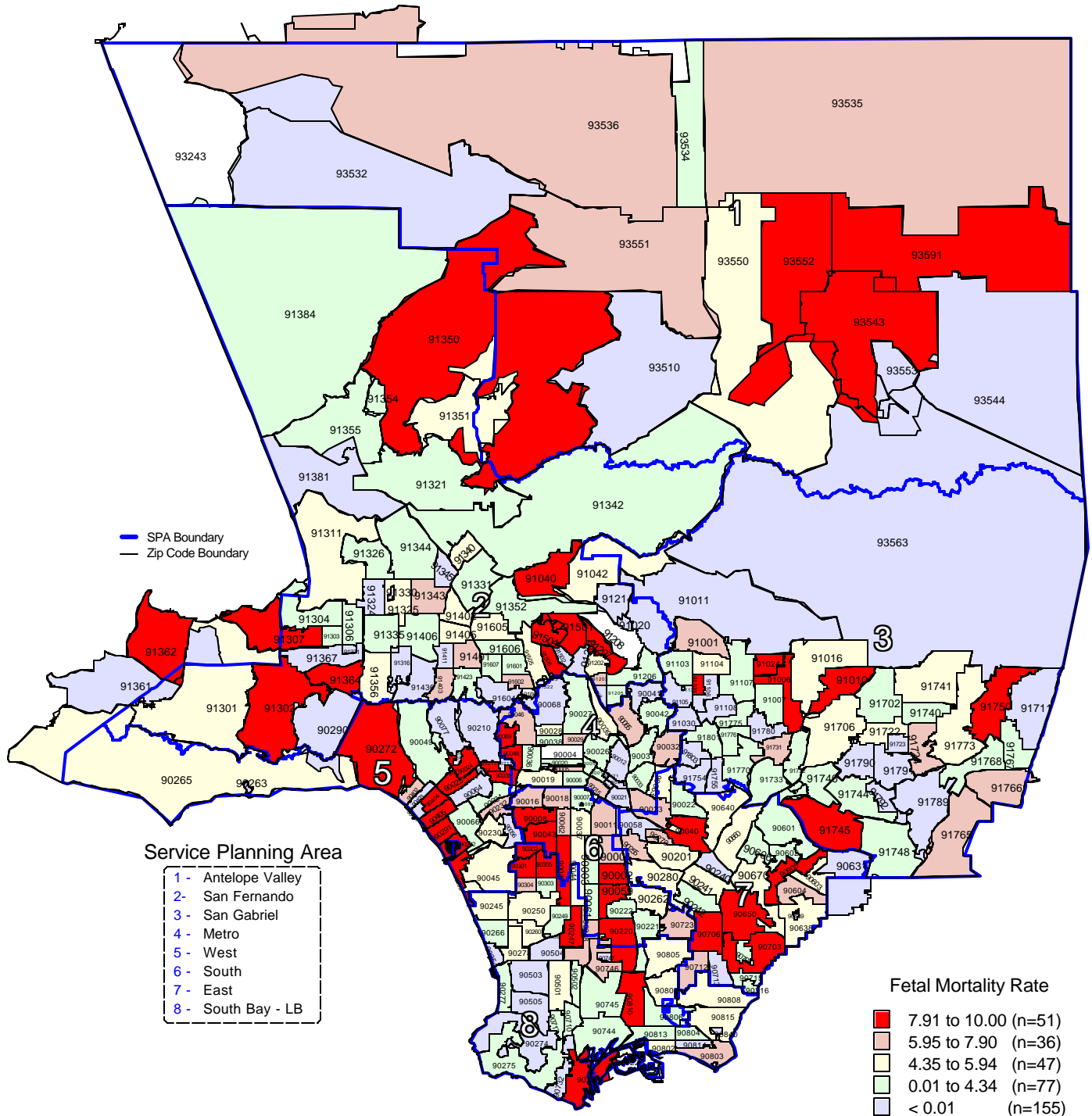


Fetal Mortality Rate by Zip Code* and Service Planning Area (SPA)

Los Angeles County, 2001



* Los Angeles County zip code boundaries as of April 2001.

Total number of live births in Los Angeles County, 2001 = 153,523

Total number of fetal deaths in Los Angeles County, 2001 = 784

Note: Fetal Mortality Rate is defined as death occurring during 20 weeks or more gestational period per 1,000 live births plus fetal deaths

Source: California Department of Health Services
Center for Health Statistics, Vital Statistics, 2001

n = total number of zip codes in range