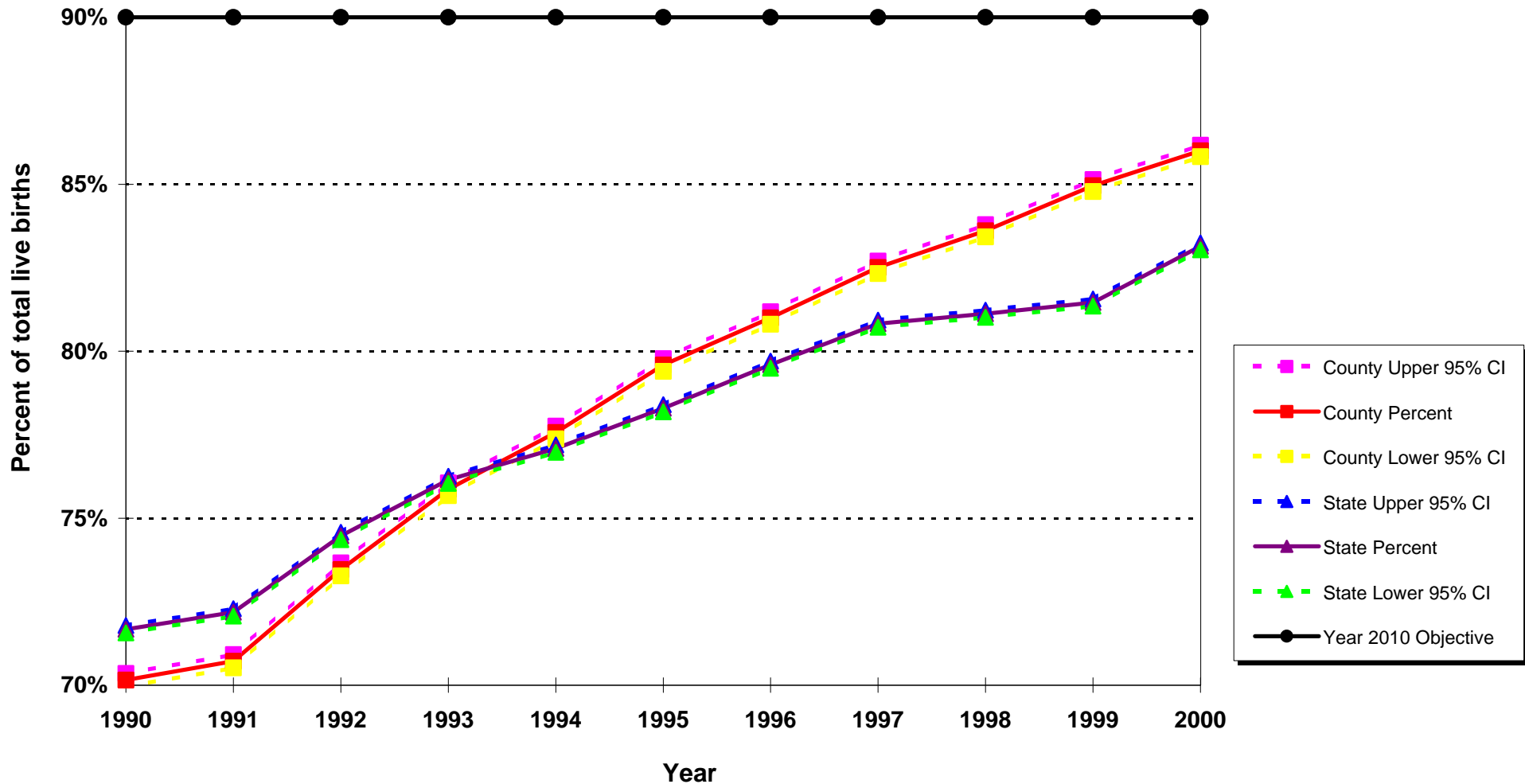


Percent of First Trimester Onset of Prenatal Care (PNC) California vs. Los Angeles County, 1990 - 2000



Year 2010 Objective: Increase to at least 90 percent the proportion of all pregnant women who receive prenatal care in the first trimester of pregnancy.

Note: This measure excludes the prenatal care experiences of all women whose pregnancies did not result in live births.

Source: California Department of Health Services, Center for Health Statistics, Vital Statistics, 1990-2000