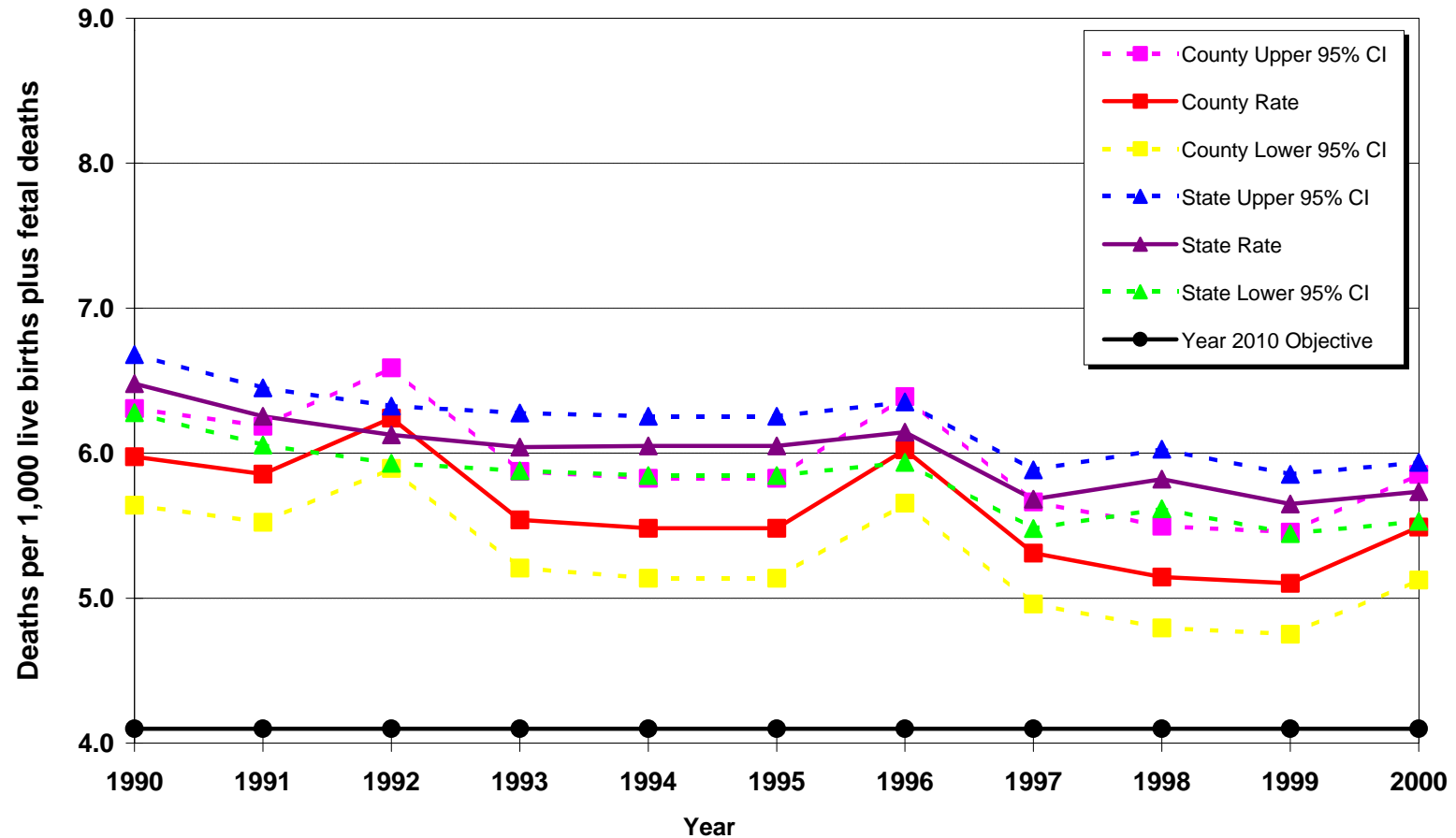


# **Fetal Deaths per 1,000 Live Births plus Fetal Deaths California vs. Los Angeles County, 1990 - 2000**



**Year 2010 Objective:** Reduce the fetal death rate (20 or more weeks of gestation) to no more than 4.1 per 1,000 live births plus fetal deaths.

**Source:** California Department of Health Services, Center for Health Statistics, Vital Statistics, 1990-2000