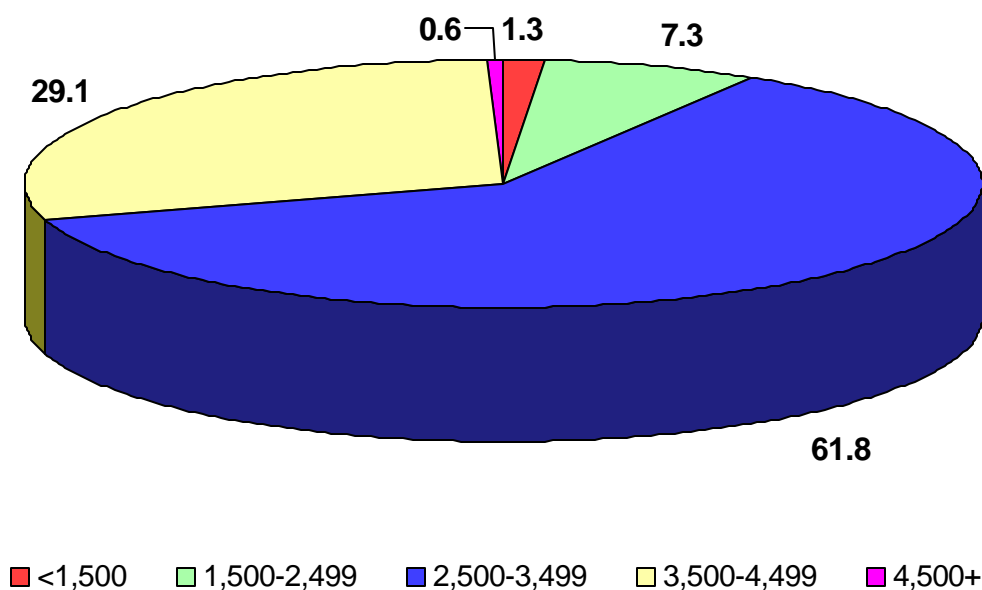


# **Percent of Live Births to Mothers Less Than 17 Years Old by Birthweight Los Angeles County, 2000**



Birthweight (grams)									
<1,500		1,500-2,499		2,500-3,499		3,500-4,499		4,500+	
Number	Percent	Number	Percent	Number	Percent	Number	Percent	Number	Percent
38	1.3	220	7.3	1,858	61.8	875	29.1	17	0.6

**Note:** Total live births to mothers less than 17 years old in Los Angeles County in 2000 was 3,008  
**Source:** California Department of Health Services, Center for Health Statistics, Vital Statistics, 2000