

Prenatal Care

TITLE V INDICATOR TEMPLATE

INDICATOR: First Trimester Onset of Prenatal Care (PNC)

DEFINITION: The percent of live born infants whose mothers received prenatal care in the first trimester of pregnancy

NUMERATOR: The number of live births to women who received prenatal care during the first trimester, by place of residence, in a calendar year

DENOMINATOR: The total number of live births, by place of residence, in a calendar year

HEALTHY PEOPLE 2010 OBJECTIVE:

Increase the proportion of pregnant women who receive prenatal care in the first trimester of pregnancy to 90 percent of live births.
(Baseline: 83 percent of live births in 1998) (Objective 16-6a)

HEALTHY PEOPLE 2020 OBJECTIVE:

Increase the proportion of pregnant women who receive prenatal care in the first trimester of pregnancy to 77.9 percent of live births.
(Baseline: 70.8 percent of pregnant women in 2007) (Objective MICH-10.1)

RISK FACTORS: For not obtaining early prenatal care Low income; young maternal age/teen pregnancy; low maternal education level; race/ethnicity (African American, Hispanic, American Indian/Alaska Native); high parity; maternal substance abuse; lack of health insurance; lack of obstetric providers

Year	California				Los Angeles County			
	First Trimester Prenatal Care		95% Confidence Interval		First Trimester Prenatal Care		95% Confidence Interval	
	Number	Percent	Lower	Upper	Number	Percent	Lower	Upper
2002	448,955	84.8	84.7	84.9	132,493	87.6	87.5	87.8
2003	464,156	85.8	85.7	85.9	136,609	89.8	89.6	89.9
2004	466,463	85.6	85.5	85.7	136,144	89.9	89.7	90.0
2005	470,955	85.8	85.7	85.9	136,020	90.5	90.3	90.6
2006	478,973	85.2	85.1	85.3	137,077	90.3	90.1	90.4
2007	459,188	80.9	80.8	81.0	129,741	85.5	85.3	85.6
2008	445,108	80.7	80.6	80.8	123,251	83.5	83.3	83.6
2009	428,449	81.3	81.2	81.4	116,717	83.6	83.4	83.8
2010	416,759	81.7	81.6	81.8	110,516	83.0	82.8	83.2
2011	410,213	81.7	81.6	81.8	106,307	81.6	81.4	81.8

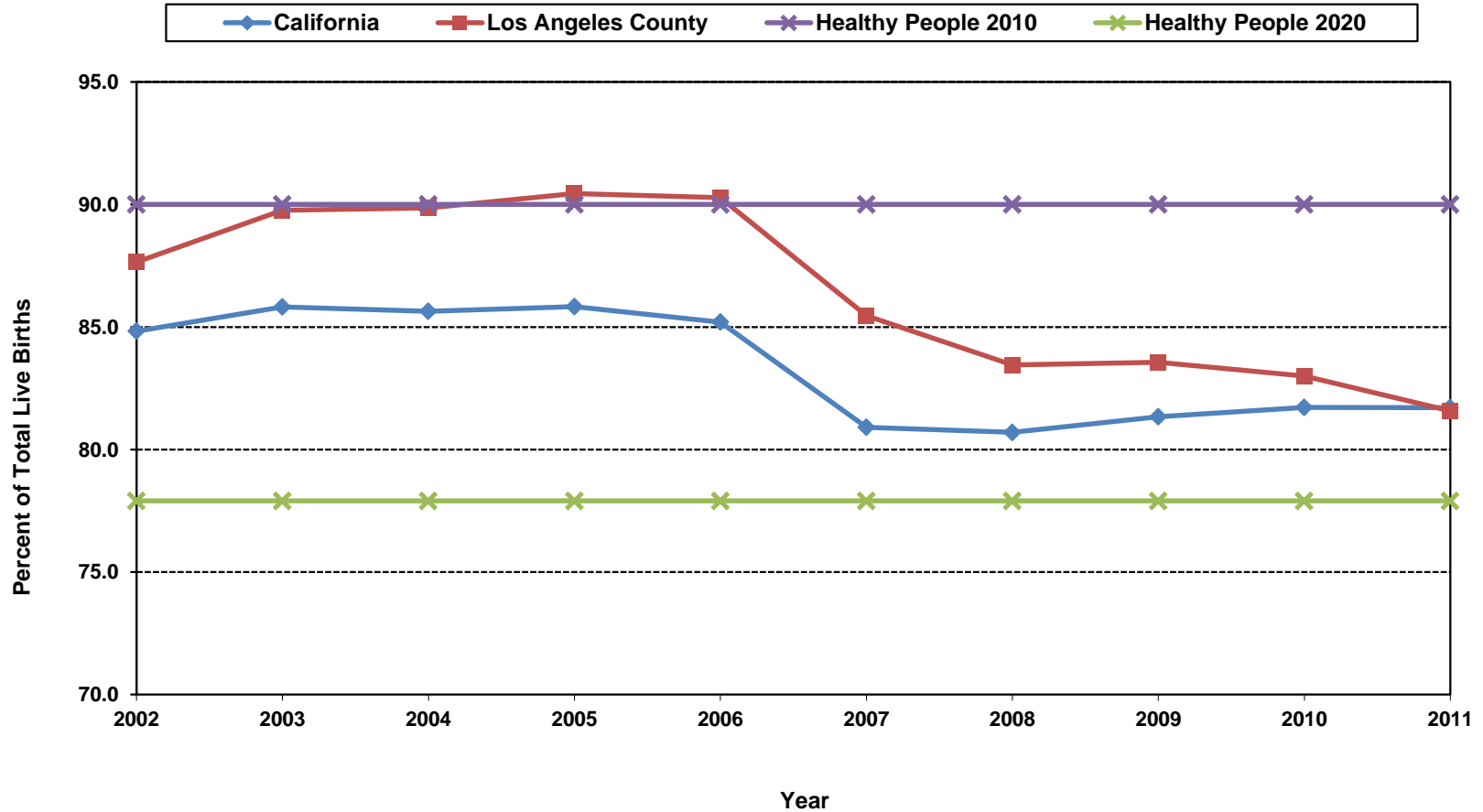
Denominator: Live Births		
Year	California	LA County
2002	529,245	151,167
2003	540,827	152,192
2004	544,685	151,504
2005	548,700	150,377
2006	562,157	151,837
2007	567,527	151,813
2008	551,567	147,684
2009	526,774	139,679
2010	509,979	133,160
2011	502,023	130,313

Note: The decrease in first-trimester entry in 2007 is due at least in part to a recategorization of this data in birth certificates.

This measure excludes the prenatal care experiences of all women whose pregnancies did not result in live births.

Source: California Department of Public Health, Center for Health Statistics, OHIR Vital Statistics Section, 2002-2011.

Percent of First Trimester Onset of Prenatal Care California vs. Los Angeles County, 2002-2011



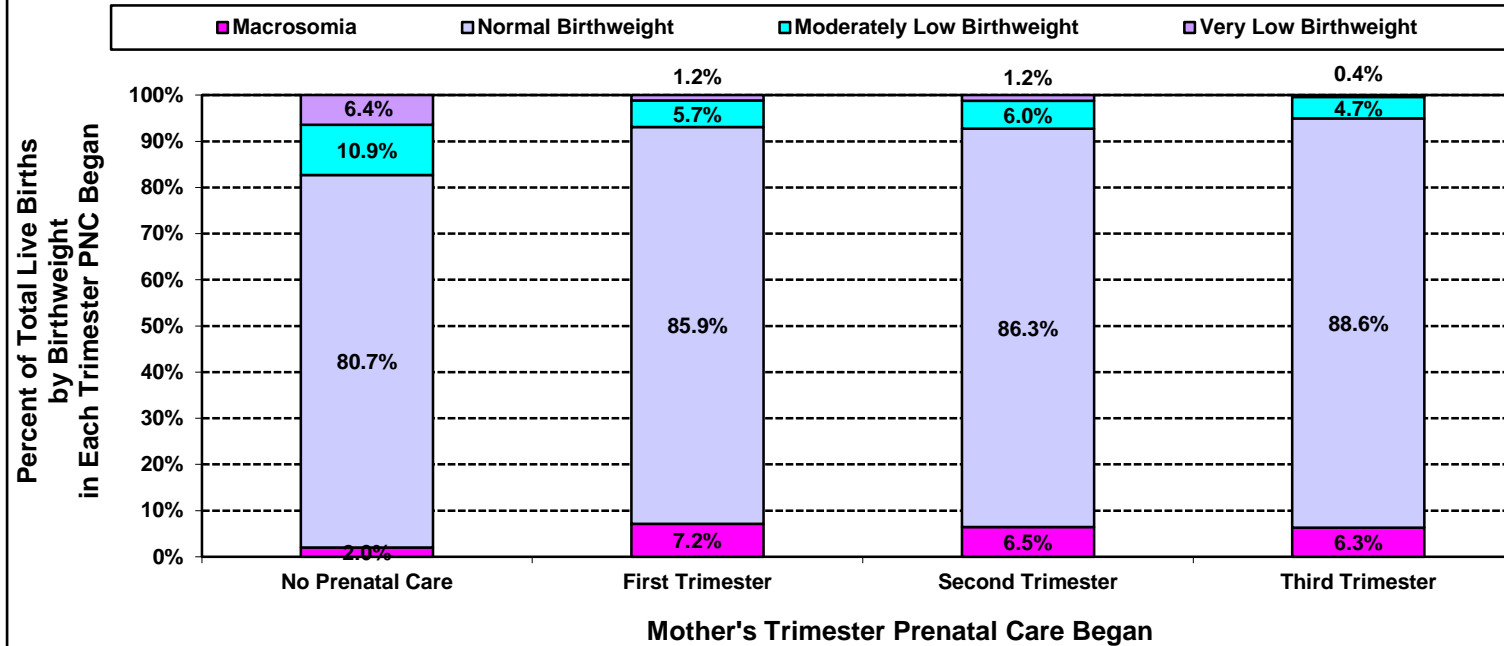
Year 2010 Objective: Increase the proportion of pregnant women who receive prenatal care in the first trimester of pregnancy to 90 percent of live births.

Year 2020 Objective: Increase the proportion of pregnant women who receive prenatal care in the first trimester of pregnancy to 77.9 percent of live births.

Note: The decrease in first-trimester entry in 2007 is due at least in part to a recategorization of this data in birth certificates. This measure excludes the prenatal care experiences of all women whose pregnancies did not result in live births.

Source: California Department of Public Health, Center for Health Statistics, OHIR Vital Statistics Section, 2002-2011.

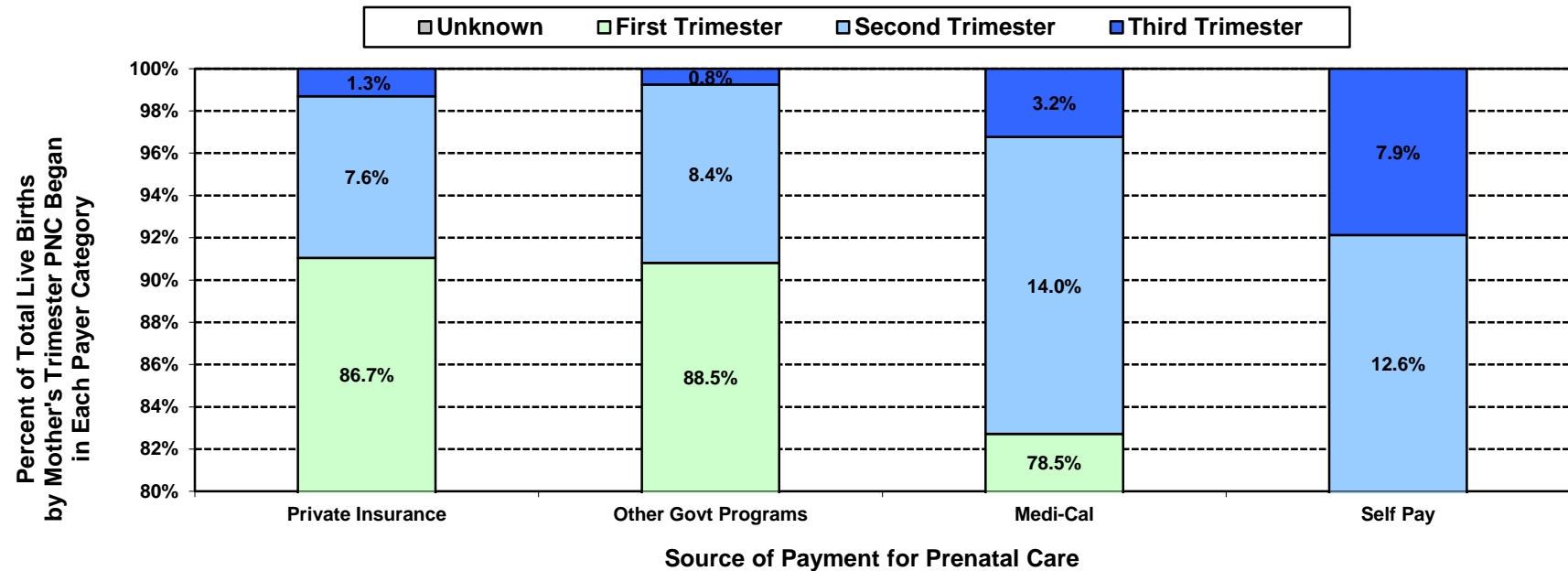
**Percent of Total Live Births
by Birthweight and by Mother's Trimester Prenatal Care (PNC) Began
Los Angeles County, 2011**



Los Angeles County, 2011									
Mother's Trimester Prenatal Care Began	Very Low Birthweight		Moderately Low Birthweight		Normal Birthweight		Macrosomia		Total Live Births
	0 to 1,499 grams		1,500 to 2,499 grams		2,500 to 3,999 grams		4,000+ grams		
	Number	Percent	Number	Percent	Number	Percent	Number	Percent	
No Prenatal Care	26	6.4	44	10.9	327	80.7	8	2.0	405
First	1,246	1.2	6,093	5.7	91,356	85.9	7,611	7.2	106,307
Second	180	1.2	872	6.0	12,562	86.3	940	6.5	14,554
Third	12	0.4	153	4.7	2,901	88.6	207	6.3	3,273
Unknown	123	2.1	508	8.8	4,769	82.6	374	6.5	5,774
Total	1,587	1.2	7,670	5.9	111,915	85.9	9,140	7.0	130,313

Note: "Trimester Prenatal Care Began" excludes the prenatal care experiences of all women whose pregnancies did not result in a live birth.
Source: California Department of Public Health, Center for Health Statistics, OHIR Vital Statistics Section, 2011

**Percent of Total Live Births by Mother's Trimester Prenatal Care (PNC) Began
and by Source of Payment for Prenatal Care (PNC)
Los Angeles County, 2011**



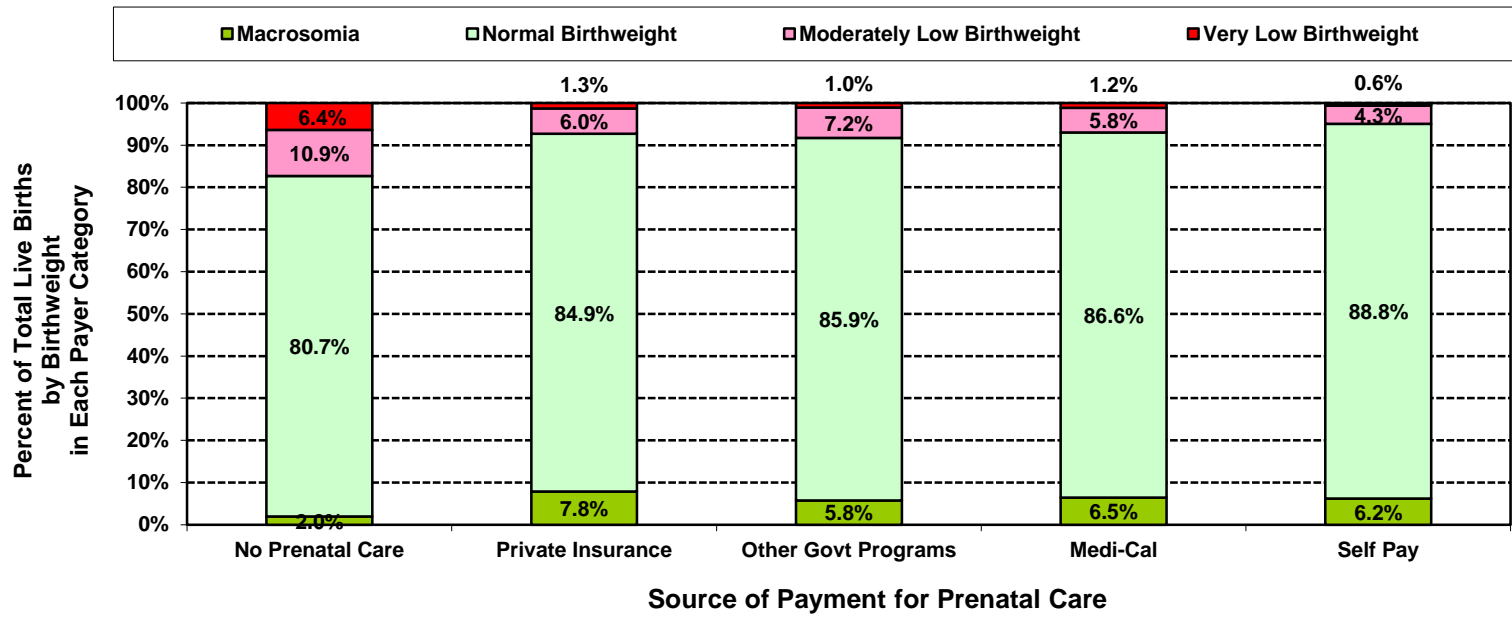
Los Angeles County, 2011											
Source of Payment for Prenatal Care	No Prenatal Care		Mother's Trimester Prenatal Care Began						Unknown		Total Live Births
			First		Second		Third				
	Number	Percent	Number	Percent	Number	Percent	Number	Percent	Number	Percent	
No Prenatal Care	405	100.0	<5	N/C	<5	N/C	<5	N/C	<5	N/C	405
Private Insurance	<5	N/C	46,042	86.7	4,058	7.6	696	1.3	2,282	4.3	53,078
Other Govt Programs	<5	N/C	1,870	88.5	178	8.4	16	0.8	48	2.3	2,112
Medi-Cal	<5	N/C	53,872	78.5	9,633	14.0	2,218	3.2	2,881	4.2	68,604
Self Pay	<5	N/C	2,571	68.4	472	12.6	296	7.9	421	11.2	3,760
Other/Unknown	<5	N/C	1,952	82.9	213	9.0	47	2.0	142	6.0	2,354
Total	405	0.3	106,307	81.6	14,554	11.2	3,273	2.5	5,774	4.4	130,313

Note: "Trimester Prenatal Care Began" excludes the prenatal care experiences of all women whose pregnancies did not result in a live birth.

Numbers fewer than 5 are shown as "<5". Rates are not calculated (N/C) if number is fewer than five.

Source: California Department of Public Health, Center for Health Statistics, OHIR Vital Statistics Section, 2011

**Percent of Total Live Births
by Birthweight and by Source of Payment for Prenatal Care (PNC)
Los Angeles County, 2011**

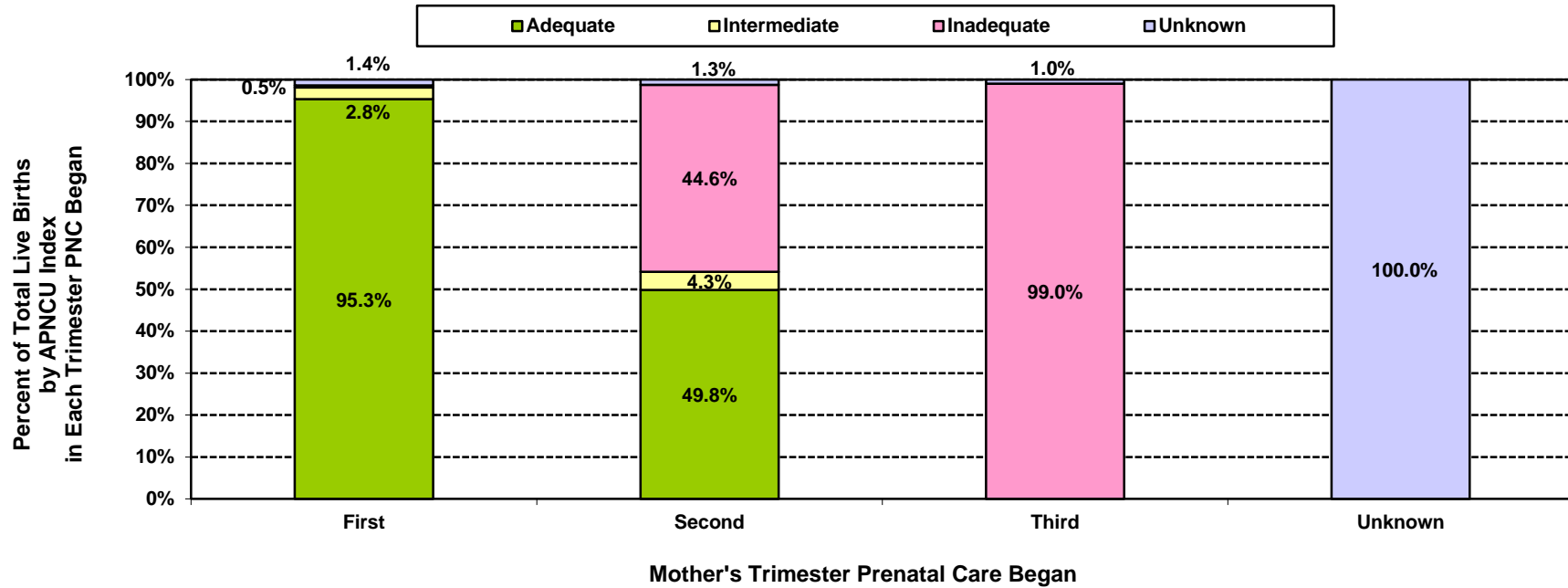


Los Angeles County, 2011									
Source of Payment for Prenatal Care	Very Low Birthweight		Moderately Low Birthweight		Normal Birthweight		Macrosumia		Total Live Births
	0 to 1,499 grams		1,500 to 2,499 grams		2,500 to 3,999 grams		4,000+ grams		
	Number	Percent	Number	Percent	Number	Percent	Number	Percent	
No Prenatal Care	26	6.4	44	10.9	327	80.7	8	2.0	405
Private Insurance	673	1.3	3,197	6.0	45,049	84.9	4,159	7.8	53,078
Other Govt Programs	22	1.0	153	7.2	1,815	85.9	122	5.8	2,112
Medi-Cal	799	1.2	3,975	5.8	59,398	86.6	4,432	6.5	68,604
Self Pay	24	0.6	162	4.3	3,340	88.8	234	6.2	3,760
Other/Unknown	43	1.8	139	5.9	1,986	84.4	185	7.9	2,354
Total	1,587	1.2	7,670	5.9	111,915	85.9	9,140	7.0	130,313

Note: "Trimester Prenatal Care Began" excludes the prenatal care experiences of all women whose pregnancies did not result in a live birth.

Source: California Department of Public Health, Center for Health Statistics, OHIR Vital Statistics Section, 2011

**Percent of Total Live Births by Adequacy of Prenatal Care Utilization Index
and by Mother's Trimester Prenatal Care (PNC) Began
Los Angeles County, 2011**

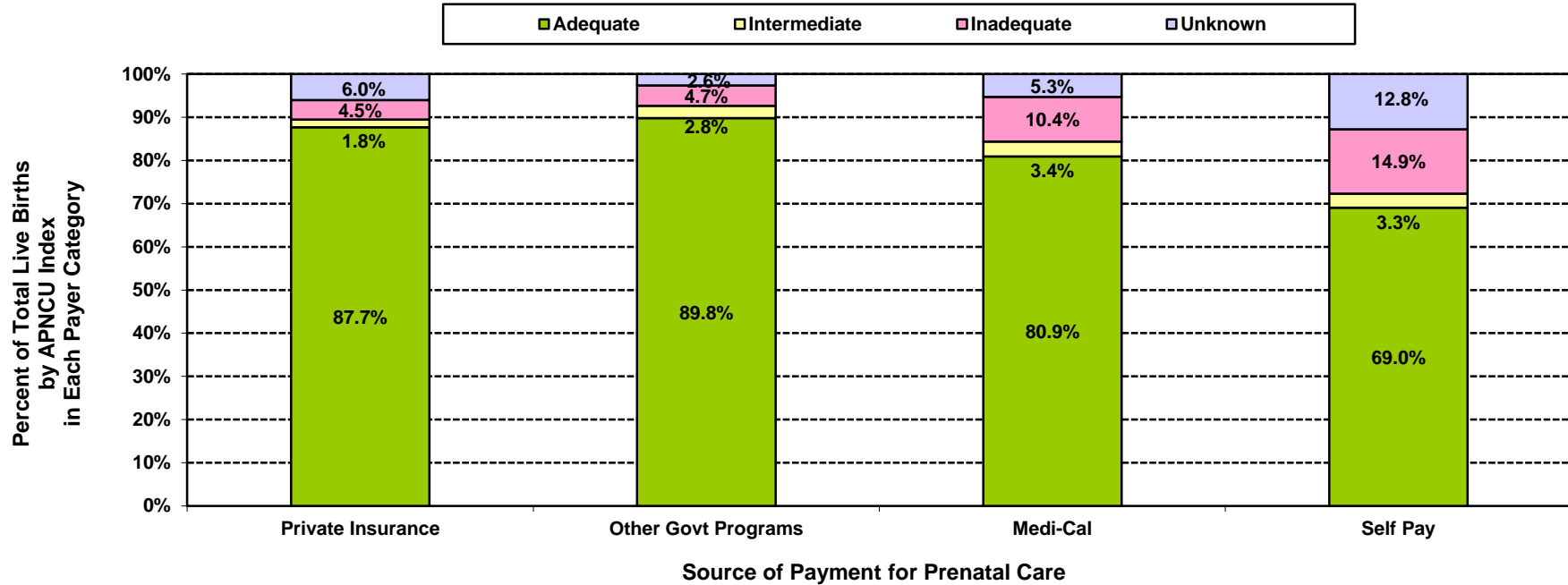


Los Angeles County, 2011									
Mother's Trimester Prenatal Care Began	Adequacy of Prenatal Care Utilization Index						Unknown		Total Live Births
	Adequate		Intermediate		Inadequate		Number	Percent	
	Number	Percent	Number	Percent	Number	Percent			
No Prenatal Care	<5	N/C	<5	N/C	405	100.0	<5	N/C	405
First	101,306	95.3	2,953	2.8	558	0.5	1,490	1.4	106,307
Second	7,247	49.8	632	4.3	6,486	44.6	189	1.3	14,554
Third	<5	N/C	<5	N/C	3,239	99.0	34	1.0	3,273
Unknown	<5	N/C	<5	N/C	<5	N/C	5,774	100.0	5,774
Total	108,553	83.3	3,585	2.8	10,688	8.2	7,487	5.7	130,313

Note: "Trimester Prenatal Care Began" excludes the prenatal care experiences of all women whose pregnancies did not result in a live birth. Numbers fewer than 5 are shown as "<5". Rates are not calculated (N/C) if number is fewer than five.

Source: California Department of Public Health, Center for Health Statistics, OHIR Vital Statistics Section, 2011

**Percent of Total Live Births by Adequacy of Prenatal Care Utilization Index
and by Source of Payment for Prenatal Care (PNC)
Los Angeles County, 2011**



Los Angeles County, 2011									Total Live Births
Source of Payment for Prenatal Care	Adequacy of Prenatal Care Utilization Index						Unknown		
	Adequate		Intermediate		Inadequate		Number	Percent	
	Number	Percent	Number	Percent	Number	Percent			
No Prenatal Care	<5	N/C	<5	N/C	405	100.0	<5	N/C	405
Private Insurance	46,527	87.7	978	1.8	2,388	4.5	3,185	6.0	53,078
Other Govt Programs	1,897	89.8	60	2.8	100	4.7	55	2.6	2,112
Medi-Cal	55,524	80.9	2,363	3.4	7,103	10.4	3,614	5.3	68,604
Self Pay	2,596	69.0	124	3.3	560	14.9	480	12.8	3,760
Other/Unknown	2,009	85.3	60	2.5	132	5.6	153	6.5	2,354
Total	108,553	83.3	3,585	2.8	10,688	8.2	7,487	5.7	130,313

Note: Numbers fewer than 5 are shown as "<5". Rates are not calculated (N/C) if number is fewer than five.
Source: California Department of Public Health, Center for Health Statistics, OHIR Vital Statistics Section, 2011

TITLE V INDICATOR TEMPLATE

INDICATOR: Percent of Total Live Births by Adequacy of Prenatal Care Utilization (APNCU) Index

DEFINITION: The percent of live born infants whose mothers received adequate prenatal care as defined by the Adequacy of Prenatal Care Utilization Index (APNCU) developed by Milton Kotelchuck. This index does not assess the quality of the prenatal care that is delivered.

NUMERATOR: The number of live births to women who received adequate care, as defined by the APNCU criteria, by place of residence, in a calendar year

DENOMINATOR: The total number of live births, by place of residence, in a calendar year

HEALTHY PEOPLE 2010 OBJECTIVE:
 Increase the proportion of all pregnant women who receive early and adequate prenatal care to 90 percent of live births.
 (Baseline: 74 percent of live births in 1998) (Objective 16-6b)

HEALTHY PEOPLE 2020 OBJECTIVE:
 Increase the proportion of pregnant women who receive early and adequate prenatal care to 77.6 percent of live births.
 (Baseline: 70.5 percent of pregnant women in 2007) (Objective MICH-10.2)

RISK FACTORS: **Inadequate Prenatal Care**
 Low income; young maternal age/teen pregnancy; low maternal education level; race/ethnicity (African American, Hispanic, American Indian/Alaskan Native); high parity; maternal substance abuse; lack of health insurance; lack of obstetric providers

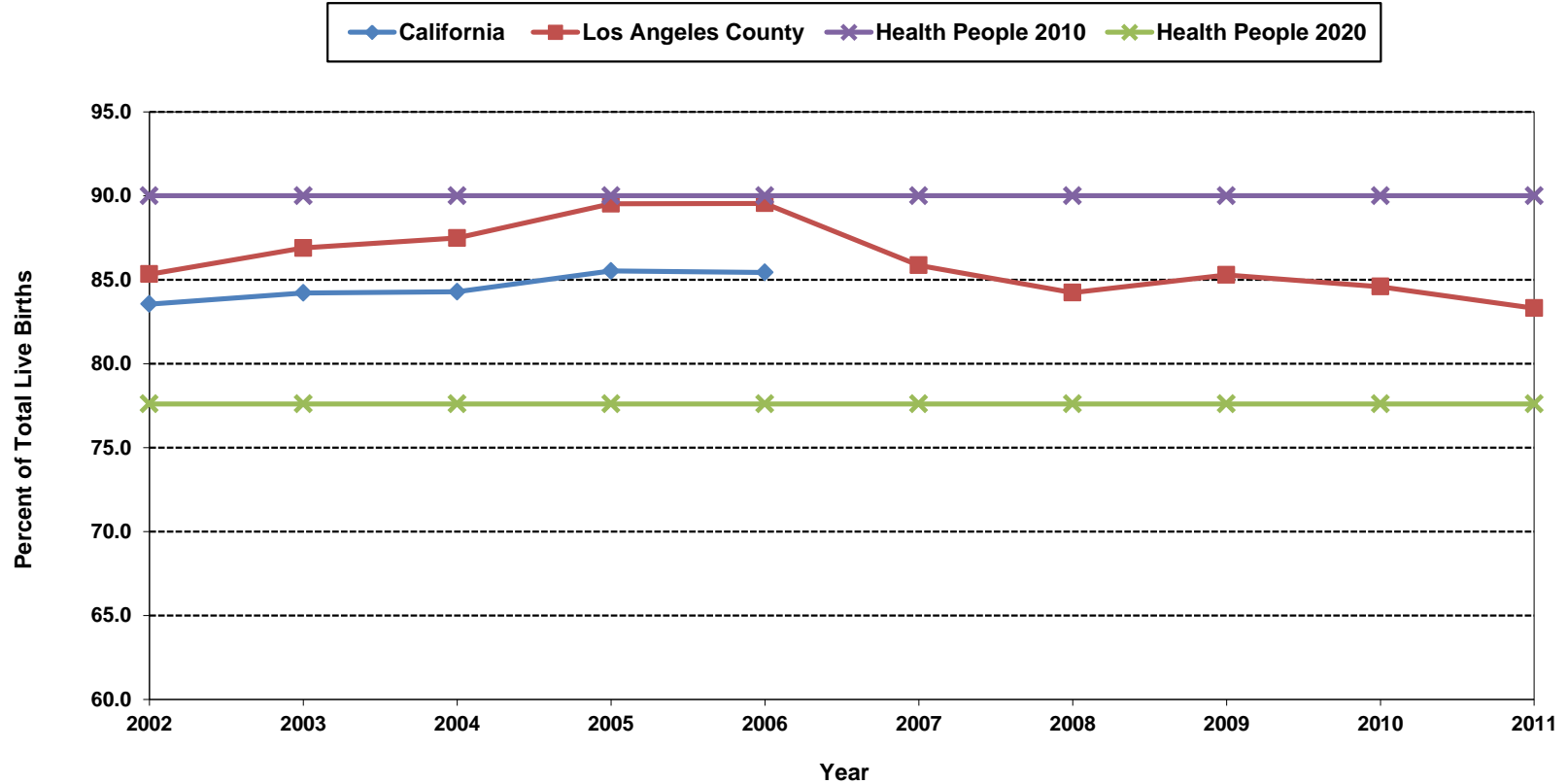
Year	California				Los Angeles County			
	Adequate Prenatal Care		95% Confidence Interval		Adequate Prenatal Care		95% Confidence Interval	
	Number	Percent	Lower	Upper	Number	Percent	Lower	Upper
2002	442,146	83.5	83.4	83.6	128,984	85.3	85.1	85.5
2003	455,424	84.2	84.1	84.3	132,229	86.9	86.7	87.1
2004	459,050	84.3	84.2	84.4	132,531	87.5	87.3	87.6
2005	469,208	85.5	85.4	85.6	134,611	89.5	89.4	89.7
2006	480,255	85.4	85.3	85.5	135,961	89.5	89.4	89.7
2007	N/A	N/A	N/A	N/A	130,333	85.9	85.7	86.0
2008	N/A	N/A	N/A	N/A	124,381	84.2	84.0	84.4
2009	N/A	N/A	N/A	N/A	119,111	85.3	85.1	85.5
2010	N/A	N/A	N/A	N/A	112,631	84.6	84.4	84.8
2011	N/A	N/A	N/A	N/A	108,553	83.3	83.1	83.5

Denominator: Live Births		
Year	California	LA County
2002	529,245	151,167
2003	540,827	152,192
2004	544,685	151,504
2005	548,700	150,377
2006	562,157	151,837
2007	567,527	151,813
2008	551,567	147,684
2009	526,774	139,679
2010	509,979	133,160
2011	502,023	130,313

Note: The APNCU Index measures prenatal care utilization, which includes consideration of the month prenatal care began and the number of prenatal care visits during the time mothers actually received prenatal care. This utilization index is based on the recommendations established by the American College of Obstetrics and Gynecologists (ACOG). Appendix A contains the specific criteria for timing and number of prenatal care visits that are used to assign adequacy categories. Due to the change in methodology for calculating the Kotelchuck Index, data presented may not be comparable to those published in previous FHOP reports. N/A: 2007 - 2011 data for California not available for retrieval

Source: California Department of Public Health, Center for Health Statistics, OHIR Vital Statistics Section, 2002-2011.

**Percent of Total Live Births with "Adequate" Prenatal Care
as Rated by Kotelchuck (APNCU) Index
California vs. Los Angeles County, 2002-2011**



Year 2010 Objective: Increase the proportion of pregnant women who receive early and adequate prenatal care to 90 percent of live births.

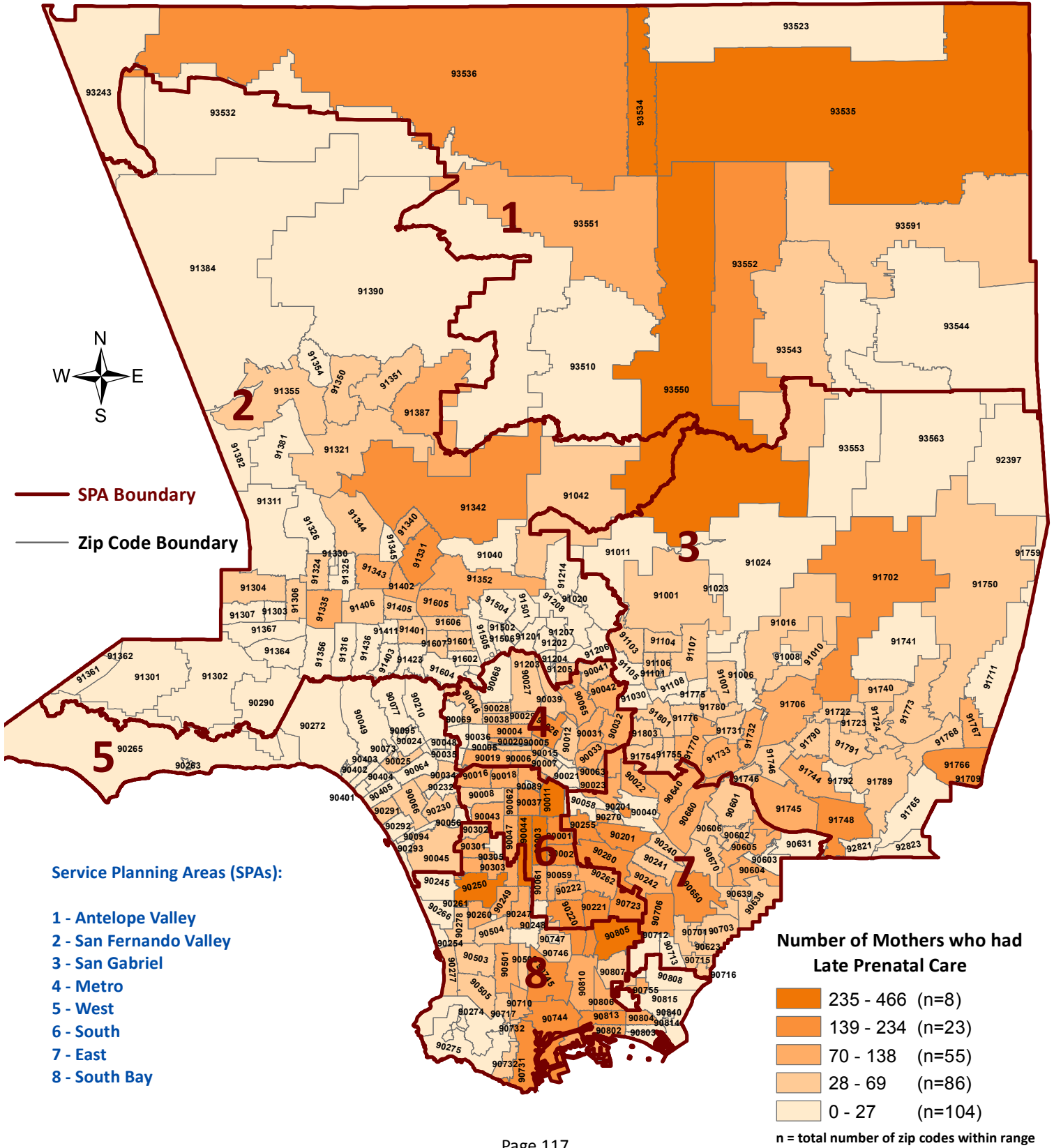
Year 2020 Objective: Increase the proportion of pregnant women who receive early and adequate prenatal care to 77.6 percent of live births.

Note: The APNCU Index measures prenatal care utilization, which includes consideration of the month prenatal care began and the number of prenatal care visits during the time mothers actually received prenatal care. This utilization index is based on the recommendations established by the American College of Obstetrics and Gynecologists (ACOG). Appendix A contains the specific criteria for timing and number of prenatal care visits that are used to assign adequacy categories.

Due to the change in methodology for calculating the Kotelchuck Index, data presented may not be comparable to those published in previous FHOP reports.

Source: California Department of Public Health, Center for Health Statistics, OHIR Vital Statistics Section, 2002-2011.

Los Angeles County - Department of Public Health
Number of Live Births by Mothers who had Late Prenatal Care by Zip Code* and Service Planning Area (SPA)
Los Angeles County, 2011



*Los Angeles County zip code boundaries as of April 2007

Total number of live births in Los Angeles County, 2011= 130,313

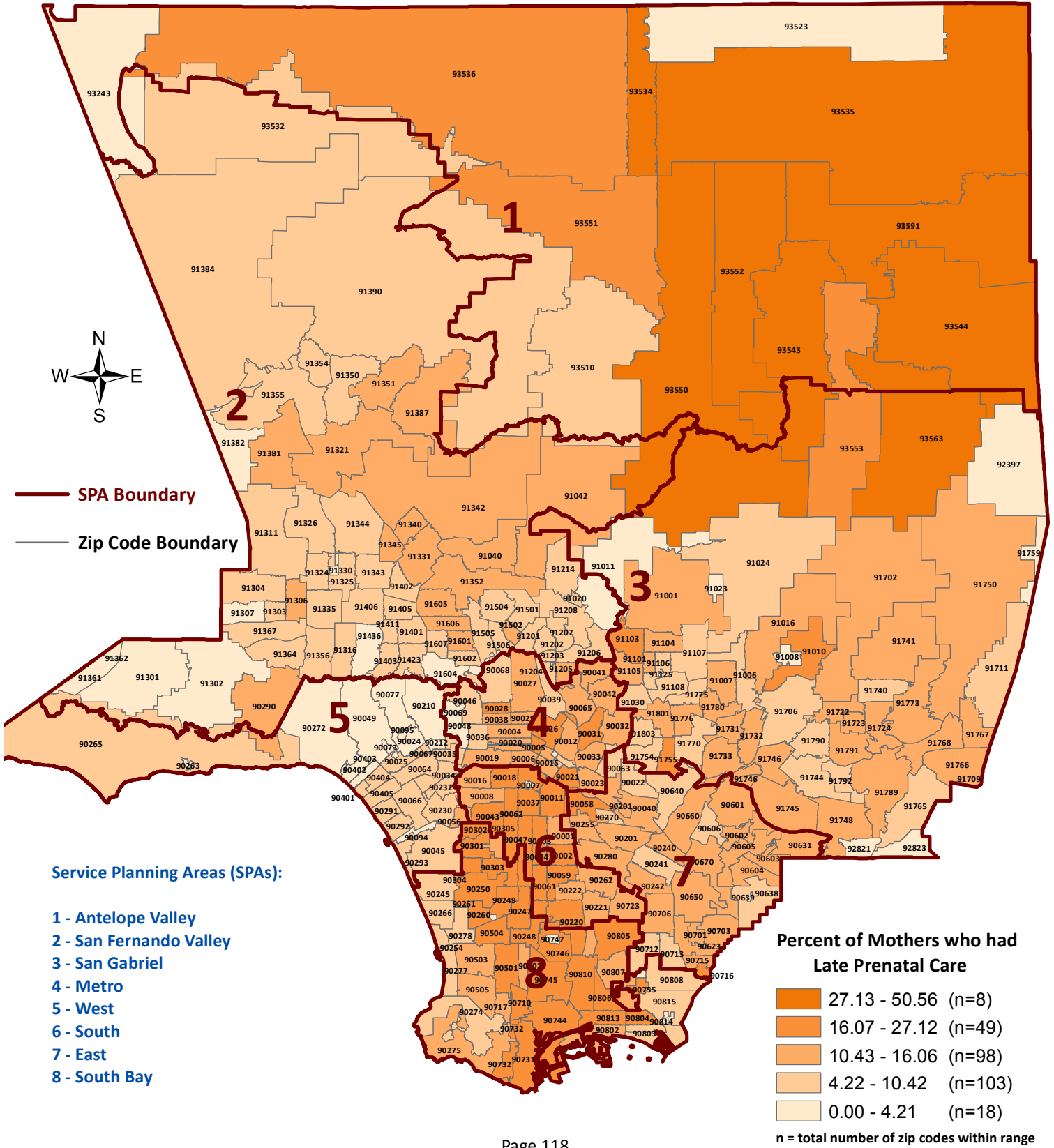
Total number of mothers who had late prenatal care in Los Angeles County, 2011 = 17,827

Note: Prenatal care that begins in the second or third trimester is considered late.

Zip code 90704 (Catalina Island) is not included. Total number of mothers who had late prenatal care in 90704, 2011 = 3

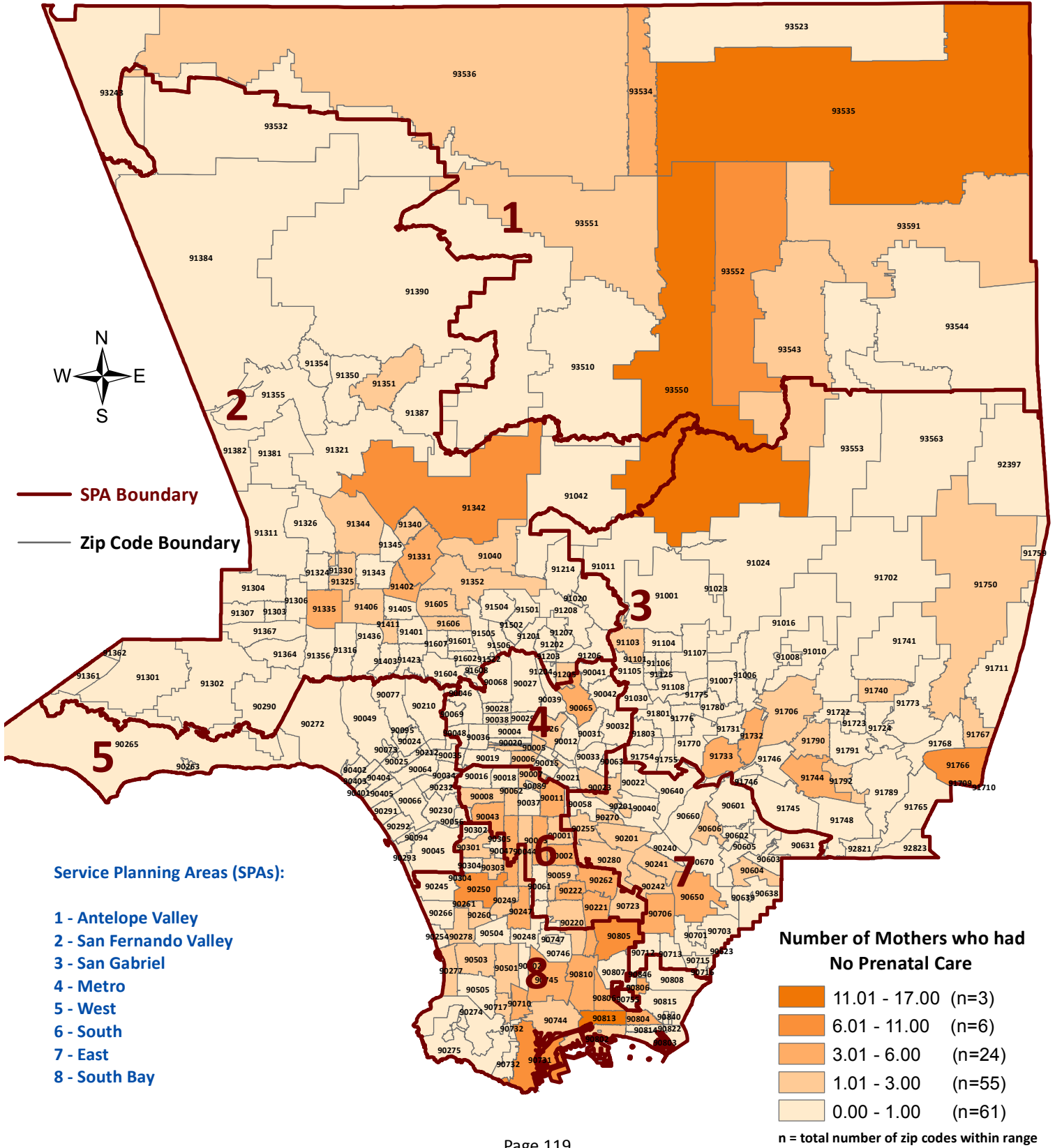
Source : California Department of Public Health, Center for Health Statistics, OHIR Vital Statistics Section, 2011.

Los Angeles County - Department of Public Health
Percent of Live Births by Mothers who had Late Prenatal Care by Zip Code* and Service Planning Area (SPA)
Los Angeles County, 2011



*Los Angeles County zip code boundaries as of April 2007
 Total number of live births in Los Angeles County, 2011= 130,313
 Total number of mothers who had late prenatal care in Los Angeles County, 2011 = 17,827
 Percent of mothers who had late prenatal care in Los Angeles County, 2011 = 13.68
 Note: Prenatal care that begins in the second or third trimester is considered late.
 Zip code 90704 (Catalina Island) is not included. Percent of mothers who had late prenatal care in 90704, 2011 = 9.38
 Source : California Department of Public Health, Center for Health Statistics, OHIR Vital Statistics Section, 2011.

Los Angeles County - Department of Public Health
Number of Live Births by Mothers who had No Prenatal Care by Zip Code* and Service Planning Area (SPA)
Los Angeles County, 2011



*Los Angeles County zip code boundaries as of April 2007

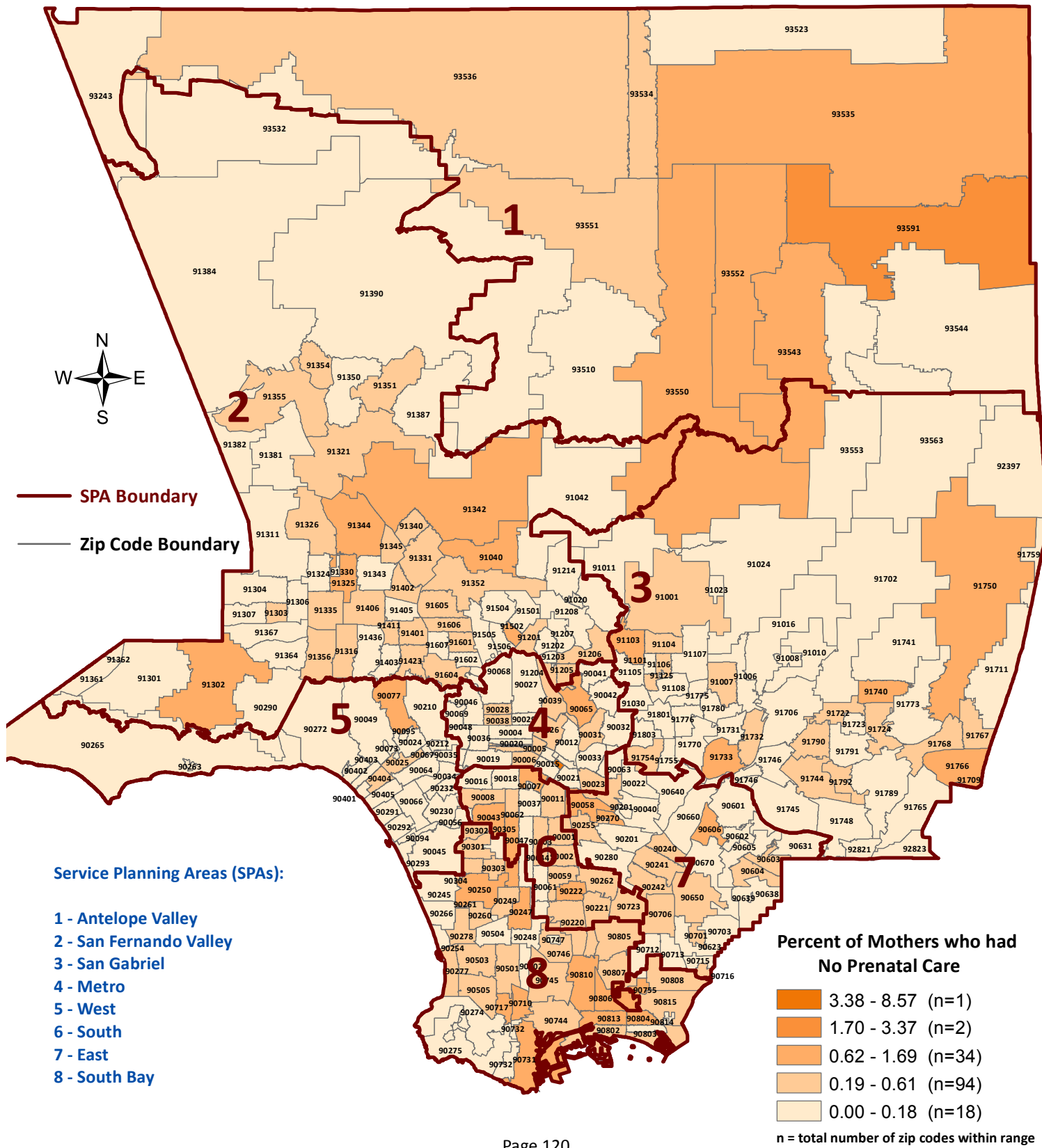
Total number of live births in Los Angeles County, 2011 = 130,313

Total number of mothers who had no prenatal care in Los Angeles County, 2011 = 405

Zip code 90704 (Catalina Island) is not included. Total number of mothers who had no prenatal care in 90704, 2011 = 1

Source: California Department of Public Health, Center for Health Statistics, OHIR Vital Statistics Section, 2011.

Los Angeles County - Department of Public Health
Percent of Live Births by Mothers who had No Prenatal Care by Zip Code* and Service Planning Area (SPA)
Los Angeles County, 2011



*Los Angeles County zip code boundaries as of April 2007
 Total number of live births in Los Angeles County, 2011= 130,313
 Total number of mothers who had no prenatal care in Los Angeles County, 2011 = 405
 Percent of mothers who had no prenatal care in Los Angeles County, 2011 = 0.31
 Zip code 90704 (Catalina Island) is not included. Percent of mothers who had no prenatal care in 90704, 2011 = 3.13
 Source : California Department of Public Health, Center for Health Statistics, OHIR Vital Statistics Section, 2011.

Los Angeles County - Department of Public Health
Entry Into Prenatal Care (PNC) By Zip Code*
 Los Angeles County, 2011

Mother's Residential Zip Code	Mother's Trimester Prenatal Care Began										Total Live Births
	No Prenatal Care		First Trimester		Second Trimester		Third Trimester		Unknown		
	Number	Percent	Number	Percent	Number	Percent	Number	Percent	Number	Percent	
Missing	7	2.6	181	66.5	29	10.7	22	8.1	33	12.2	272
90001	<5	**	910	76.5	138	11.6	49	4.1	89	7.5	1,189
90002	5	0.4	889	77.6	171	14.9	34	3.0	47	4.1	1,146
90003	6	0.4	1,076	74.3	211	14.6	76	5.3	79	5.5	1,448
90004	<5	**	627	77.4	92	11.4	35	4.3	55	6.8	810
90005	<5	**	414	83.5	45	9.1	14	2.8	21	4.2	496
90006	<5	**	759	81.5	104	11.2	27	2.9	38	4.1	931
90007	<5	**	294	75.4	59	15.1	15	3.9	19	4.9	390
90008	<5	**	287	73.8	43	11.1	17	4.4	40	10.3	389
90009	<5	**	<5	**	<5	**	<5	**	<5	**	3
90010	<5	**	17	73.9	<5	**	<5	**	<5	**	23
90011	5	0.2	1,652	72.8	337	14.9	91	4.0	184	8.1	2,269
90012	<5	**	188	83.2	28	12.4	<5	**	6	2.7	226
90013	<5	**	45	86.5	5	9.6	<5	**	<5	**	52
90014	<5	**	25	71.4	<5	**	<5	**	<5	**	35
90015	<5	**	242	79.6	33	10.9	10	3.3	19	6.3	304
90016	<5	**	509	75.9	82	12.2	16	2.4	64	9.5	671
90017	<5	**	295	81.5	45	12.4	12	3.3	10	2.8	362
90018	<5	**	551	76.6	100	13.9	20	2.8	48	6.7	719
90019	<5	**	650	76.5	91	10.7	39	4.6	70	8.2	850
90020	<5	**	424	82.5	58	11.3	19	3.7	13	2.5	514
90021	<5	**	11	68.8	<5	**	<5	**	<5	**	16
90022	<5	**	836	77.5	95	8.8	14	1.3	133	12.3	1,079
90023	<5	**	608	71.8	89	10.5	17	2.0	130	15.4	847
90024	<5	**	235	85.1	9	3.3	<5	**	30	10.9	276
90025	<5	**	465	86.4	27	5.0	<5	**	41	7.6	538
90026	<5	**	637	77.1	116	14.0	34	4.1	36	4.4	826
90027	<5	**	330	84.2	30	7.7	13	3.3	19	4.9	392
90028	<5	**	175	72.3	42	17.4	8	3.3	16	6.6	242
90029	<5	**	371	81.5	50	11.0	19	4.2	15	3.3	455
90030	<5	**	<5	**	<5	**	<5	**	<5	**	1
90031	<5	**	408	76.4	77	14.4	10	1.9	38	7.1	534
90032	<5	**	494	77.8	78	12.3	11	1.7	51	8.0	635
90033	<5	**	552	68.2	94	11.6	16	2.0	146	18.1	809
90034	<5	**	624	83.4	52	7.0	10	1.3	62	8.3	748
90035	<5	**	313	70.5	19	4.3	5	1.1	107	24.1	444
90036	<5	**	405	77.3	22	4.2	5	1.0	92	17.6	524
90037	<5	**	910	74.6	180	14.8	51	4.2	78	6.4	1,220
90038	<5	**	269	80.1	36	10.7	13	3.9	17	5.1	336
90039	<5	**	249	85.9	23	7.9	5	1.7	12	4.1	290
90040	<5	**	146	79.8	18	9.8	6	3.3	13	7.1	183
90041	<5	**	219	85.6	29	11.3	<5	**	6	2.3	256
90042	<5	**	734	83.4	100	11.4	30	3.4	15	1.7	880
90043	5	1.0	381	73.8	80	15.5	17	3.3	33	6.4	516
90044	<5	**	1,300	76.6	255	15.0	70	4.1	70	4.1	1,698
90045	<5	**	367	85.2	29	6.7	<5	**	31	7.2	431
90046	<5	**	238	72.6	25	7.6	<5	**	62	18.9	328
90047	5	0.8	442	72.2	96	15.7	27	4.4	42	6.9	612
90048	<5	**	170	79.4	9	4.2	<5	**	35	16.4	214
90049	<5	**	307	87.7	5	1.4	<5	**	38	10.9	350
90051	<5	**	<5	**	<5	**	<5	**	<5	**	1
90052	<5	**	<5	**	<5	**	<5	**	<5	**	4
90054	<5	**	<5	**	<5	**	<5	**	<5	**	1
90056	<5	**	50	78.1	6	9.4	<5	**	6	9.4	64
90057	<5	**	632	80.8	98	12.5	29	3.7	21	2.7	782
90058	<5	**	38	64.4	16	27.1	<5	**	<5	**	59
90059	<5	**	662	79.6	116	13.9	22	2.6	30	3.6	832
90060	<5	**	<5	**	<5	**	<5	**	<5	**	4
90061	<5	**	385	74.2	88	17.0	27	5.2	19	3.7	519
90062	<5	**	386	77.4	61	12.2	21	4.2	29	5.8	499
90063	<5	**	708	72.6	84	8.6	15	1.5	167	17.1	975
90064	<5	**	223	87.5	14	5.5	<5	**	17	6.7	255

Los Angeles County - Department of Public Health
Entry Into Prenatal Care (PNC) By Zip Code*
 Los Angeles County, 2011

Mother's Residential Zip Code	Mother's Trimester Prenatal Care Began										Total Live Births
	No Prenatal Care		First Trimester		Second Trimester		Third Trimester		Unknown		
	Number	Percent	Number	Percent	Number	Percent	Number	Percent	Number	Percent	
90065	<5	**	491	83.7	71	12.1	10	1.7	11	1.9	587
90066	<5	**	593	87.1	44	6.5	12	1.8	32	4.7	681
90067	<5	**	12	75.0	<5	**	<5	**	<5	**	16
90068	<5	**	193	85.0	8	3.5	<5	**	23	10.1	227
90069	<5	**	108	81.2	<5	**	<5	**	21	15.8	133
90071	<5	**	<5	**	<5	**	<5	**	<5	**	4
90072	<5	**	<5	**	<5	**	<5	**	<5	**	1
90077	<5	**	67	79.8	<5	**	<5	**	14	16.7	84
90089	<5	**	<5	**	<5	**	<5	**	<5	**	2
90094	<5	**	117	89.3	<5	**	<5	**	11	8.4	131
90095	<5	**	<5	**	<5	**	<5	**	<5	**	1
90174	<5	**	<5	**	<5	**	<5	**	<5	**	1
90201	<5	**	1,447	81.7	191	10.8	43	2.4	88	5.0	1,772
90202	<5	**	6	85.7	<5	**	<5	**	<5	**	7
90210	<5	**	143	79.4	5	2.8	<5	**	31	17.2	180
90211	<5	**	64	78.1	<5	**	<5	**	14	17.1	82
90212	<5	**	77	78.6	<5	**	<5	**	18	18.4	98
90220	<5	**	670	78.9	116	13.7	25	2.9	35	4.1	849
90221	5	0.5	924	82.3	133	11.8	31	2.8	30	2.7	1,123
90222	<5	**	510	80.2	80	12.6	22	3.5	20	3.1	636
90224	<5	**	<5	**	<5	**	<5	**	<5	**	1
90230	<5	**	310	85.9	27	7.5	7	1.9	17	4.7	361
90232	<5	**	141	85.5	7	4.2	<5	**	16	9.7	165
90239	<5	**	<5	**	<5	**	<5	**	<5	**	1
90240	<5	**	278	86.3	32	9.9	<5	**	7	2.2	322
90241	<5	**	473	86.5	46	8.4	11	2.0	15	2.7	547
90242	<5	**	489	83.5	66	11.3	14	2.4	14	2.4	586
90245	<5	**	166	87.4	13	6.8	<5	**	10	5.3	190
90247	5	0.8	520	78.4	97	14.6	24	3.6	17	2.6	663
90248	<5	**	75	75.0	22	22.0	<5	**	<5	**	100
90249	<5	**	261	75.2	59	17.0	19	5.5	6	1.7	347
90250	11	0.8	1,127	76.4	238	16.1	64	4.3	35	2.4	1,475
90251	<5	**	<5	**	<5	**	<5	**	<5	**	1
90254	<5	**	179	88.2	12	5.9	<5	**	11	5.4	203
90255	<5	**	1,019	79.6	132	10.3	44	3.4	82	6.4	1,280
90260	<5	**	364	76.5	69	14.5	26	5.5	15	3.2	476
90262	<5	**	1,046	86.4	114	9.4	22	1.8	25	2.1	1,211
90265	<5	**	89	91.8	5	5.2	<5	**	<5	**	97
90266	<5	**	291	88.7	16	4.9	6	1.8	15	4.6	328
90270	<5	**	409	84.2	40	8.2	7	1.4	27	5.6	486
90272	<5	**	164	93.2	<5	**	<5	**	9	5.1	176
90274	<5	**	113	92.6	7	5.7	<5	**	<5	**	122
90275	<5	**	181	87.9	18	8.7	<5	**	<5	**	206
90277	<5	**	328	90.1	29	8.0	<5	**	<5	**	364
90278	<5	**	549	86.1	46	7.2	10	1.6	30	4.7	638
90280	<5	**	1,282	84.3	142	9.3	44	2.9	51	3.4	1,521
90290	<5	**	45	83.3	6	11.1	<5	**	<5	**	54
90291	<5	**	265	86.0	25	8.1	<5	**	15	4.9	308
90292	<5	**	257	86.2	17	5.7	<5	**	20	6.7	298
90293	<5	**	121	90.3	6	4.5	<5	**	<5	**	134
90294	<5	**	<5	**	<5	**	<5	**	<5	**	1
90300	<5	**	<5	**	<5	**	<5	**	<5	**	1
90301	<5	**	410	80.2	72	14.1	12	2.4	15	2.9	511
90302	<5	**	297	76.7	56	14.5	13	3.4	20	5.2	387
90303	<5	**	315	74.8	77	18.3	17	4.0	10	2.4	421
90304	<5	**	401	79.7	81	16.1	11	2.2	9	1.8	503
90305	<5	**	111	81.0	14	10.2	8	5.8	<5	**	137
90310	<5	**	<5	**	<5	**	<5	**	<5	**	2
90313	<5	**	<5	**	<5	**	<5	**	<5	**	1
90401	<5	**	47	88.7	<5	**	<5	**	<5	**	53
90402	<5	**	82	92.1	<5	**	<5	**	5	5.6	89
90403	<5	**	196	89.5	8	3.7	<5	**	15	6.9	219

Los Angeles County - Department of Public Health
Entry Into Prenatal Care (PNC) By Zip Code*
 Los Angeles County, 2011

Mother's Residential Zip Code	Mother's Trimester Prenatal Care Began										Total Live Births
	No Prenatal Care		First Trimester		Second Trimester		Third Trimester		Unknown		
	Number	Percent	Number	Percent	Number	Percent	Number	Percent	Number	Percent	
90404	<5	**	172	90.5	9	4.7	<5	**	6	3.2	190
90405	<5	**	231	90.2	7	2.7	5	2.0	13	5.1	256
90406	<5	**	<5	**	<5	**	<5	**	<5	**	1
90501	<5	**	466	80.3	86	14.8	23	4.0	<5	**	580
90502	<5	**	181	83.0	28	12.8	6	2.8	<5	**	218
90503	<5	**	403	88.4	37	8.1	11	2.4	<5	**	456
90504	<5	**	225	81.8	35	12.7	11	4.0	<5	**	275
90505	<5	**	263	85.7	35	11.4	<5	**	<5	**	307
90601	<5	**	359	84.9	44	10.4	6	1.4	14	3.3	423
90602	<5	**	305	83.1	47	12.8	<5	**	11	3.0	367
90603	<5	**	172	87.3	19	9.6	<5	**	<5	**	197
90604	<5	**	422	81.6	66	12.8	12	2.3	15	2.9	517
90605	<5	**	487	84.7	61	10.6	14	2.4	13	2.3	575
90606	<5	**	362	86.0	35	8.3	<5	**	17	4.0	421
90607	<5	**	<5	**	<5	**	<5	**	<5	**	1
90609	<5	**	<5	**	<5	**	<5	**	<5	**	1
90630	<5	**	9	81.8	<5	**	<5	**	<5	**	11
90631	<5	**	18	81.8	<5	**	<5	**	<5	**	22
90637	<5	**	<5	**	<5	**	<5	**	<5	**	2
90638	<5	**	408	90.1	31	6.8	7	1.6	7	1.6	453
90639	<5	**	<5	**	<5	**	<5	**	<5	**	2
90640	<5	**	670	81.9	73	8.9	12	1.5	62	7.6	818
90650	6	0.4	1,204	82.7	164	11.3	49	3.4	33	2.3	1,456
90651	<5	**	<5	**	<5	**	<5	**	<5	**	1
90660	<5	**	704	83.6	89	10.6	20	2.4	29	3.4	842
90670	<5	**	149	82.8	22	12.2	6	3.3	<5	**	180
90701	<5	**	168	84.0	23	11.5	5	2.5	<5	**	200
90702	<5	**	<5	**	<5	**	<5	**	<5	**	1
90703	<5	**	266	83.1	36	11.3	8	2.5	10	3.1	320
90704	<5	**	24	75.0	<5	**	<5	**	<5	**	32
90706	<5	**	917	82.2	129	11.6	28	2.5	37	3.3	1,115
90707	<5	**	<5	**	<5	**	<5	**	<5	**	1
90710	5	1.5	255	75.4	53	15.7	20	5.9	5	1.5	338
90711	<5	**	<5	**	<5	**	<5	**	<5	**	1
90712	<5	**	282	87.9	18	5.6	5	1.6	16	5.0	321
90713	<5	**	271	90.3	20	6.7	<5	**	7	2.3	300
90714	<5	**	<5	**	<5	**	<5	**	<5	**	1
90715	<5	**	216	83.7	31	12.0	5	1.9	6	2.3	258
90716	<5	**	203	78.4	43	16.6	7	2.7	5	1.9	259
90717	<5	**	201	81.4	29	11.7	9	3.6	5	2.0	247
90723	<5	**	747	81.1	120	13.0	22	2.4	30	3.3	921
90731	7	0.9	617	74.5	146	17.6	42	5.1	16	1.9	828
90732	<5	**	181	82.3	29	13.2	7	3.2	<5	**	220
90744	<5	**	730	78.3	142	15.2	46	4.9	12	1.3	932
90745	<5	**	497	76.2	107	16.4	34	5.2	10	1.5	652
90746	<5	**	201	77.3	43	16.5	6	2.3	9	3.5	260
90748	<5	**	<5	**	<5	**	<5	**	<5	**	1
90755	<5	**	117	78.0	19	12.7	<5	**	9	6.0	150
90801	<5	**	<5	**	<5	**	<5	**	<5	**	6
90802	<5	**	405	78.5	70	13.6	9	1.7	30	5.8	516
90803	<5	**	233	86.3	15	5.6	6	2.2	15	5.6	270
90804	<5	**	479	78.3	82	13.4	17	2.8	30	4.9	612
90805	8	0.5	1,318	78.4	232	13.8	48	2.9	75	4.5	1,681
90806	5	0.7	559	75.8	107	14.5	20	2.7	47	6.4	738
90807	<5	**	294	80.6	40	11.0	<5	**	27	7.4	365
90808	<5	**	348	89.2	24	6.2	<5	**	15	3.9	390
90809	<5	**	<5	**	<5	**	<5	**	<5	**	1
90810	<5	**	401	76.5	80	15.3	14	2.7	25	4.8	524
90812	<5	**	<5	**	<5	**	<5	**	<5	**	2
90813	14	1.2	875	74.7	205	17.5	27	2.3	50	4.3	1,171
90814	<5	**	165	83.8	18	9.1	<5	**	12	6.1	197

Los Angeles County - Department of Public Health
Entry Into Prenatal Care (PNC) By Zip Code*
 Los Angeles County, 2011

Mother's Residential Zip Code	Mother's Trimester Prenatal Care Began										Total Live Births
	No Prenatal Care		First Trimester		Second Trimester		Third Trimester		Unknown		
	Number	Percent	Number	Percent	Number	Percent	Number	Percent	Number	Percent	
90815	<5	**	321	86.3	21	5.7	<5	**	26	7.0	372
90853	<5	**	<5	**	<5	**	<5	**	<5	**	1
91001	<5	**	313	86.0	38	10.4	8	2.2	<5	**	364
91003	<5	**	<5	**	<5	**	<5	**	<5	**	1
91006	<5	**	266	85.3	20	6.4	6	1.9	20	6.4	312
91007	<5	**	288	77.8	42	11.4	8	2.2	31	8.4	370
91008	<5	**	<5	**	<5	**	<5	**	<5	**	2
91010	<5	**	256	79.0	49	15.1	11	3.4	8	2.5	324
91011	<5	**	86	97.7	<5	**	<5	**	<5	**	88
91016	<5	**	413	83.8	59	12.0	10	2.0	11	2.2	493
91020	<5	**	85	93.4	6	6.6	<5	**	<5	**	91
91024	<5	**	72	92.3	5	6.4	<5	**	<5	**	78
91030	<5	**	212	92.2	15	6.5	<5	**	<5	**	230
91040	<5	**	174	86.6	22	11.0	<5	**	<5	**	201
91042	<5	**	241	87.6	26	9.5	5	1.8	<5	**	275
91043	<5	**	<5	**	<5	**	<5	**	<5	**	1
91050	<5	**	<5	**	<5	**	<5	**	<5	**	1
91077	<5	**	<5	**	<5	**	<5	**	<5	**	1
91100	<5	**	<5	**	<5	**	<5	**	<5	**	1
91101	<5	**	293	88.0	34	10.2	6	1.8	<5	**	333
91102	<5	**	<5	**	<5	**	<5	**	<5	**	1
91103	<5	**	314	81.6	53	13.8	10	2.6	5	1.3	385
91104	<5	**	414	87.0	44	9.2	10	2.1	7	1.5	476
91105	<5	**	73	86.9	8	9.5	<5	**	<5	**	84
91106	<5	**	313	89.9	24	6.9	<5	**	6	1.7	348
91107	<5	**	371	88.8	37	8.9	5	1.2	5	1.2	418
91108	<5	**	72	87.8	<5	**	<5	**	5	6.1	82
91109	<5	**	<5	**	<5	**	<5	**	<5	**	1
91113	<5	**	<5	**	<5	**	<5	**	<5	**	1
91114	<5	**	<5	**	<5	**	<5	**	<5	**	1
91125	<5	**	<5	**	<5	**	<5	**	<5	**	1
91131	<5	**	<5	**	<5	**	<5	**	<5	**	2
91175	<5	**	<5	**	<5	**	<5	**	<5	**	1
91201	<5	**	196	89.1	19	8.6	<5	**	<5	**	220
91202	<5	**	237	91.5	11	4.3	6	2.3	5	1.9	259
91203	<5	**	147	89.1	14	8.5	<5	**	<5	**	165
91204	<5	**	152	87.9	11	6.4	<5	**	5	2.9	173
91205	<5	**	320	80.4	57	14.3	6	1.5	13	3.3	398
91206	<5	**	280	88.6	19	6.0	8	2.5	8	2.5	316
91207	<5	**	89	89.9	5	5.1	<5	**	<5	**	99
91208	<5	**	143	91.7	8	5.1	<5	**	5	3.2	156
91210	<5	**	5	83.3	<5	**	<5	**	<5	**	6
91214	<5	**	189	90.9	13	6.3	<5	**	<5	**	208
91301	<5	**	184	94.9	6	3.1	<5	**	<5	**	194
91302	<5	**	138	94.5	<5	**	<5	**	5	3.4	146
91303	<5	**	403	92.9	20	4.6	<5	**	6	1.4	434
91304	<5	**	513	91.6	34	6.1	8	1.4	5	0.9	560
91305	<5	**	<5	**	<5	**	<5	**	<5	**	2
91306	<5	**	501	87.6	51	8.9	12	2.1	7	1.2	572
91307	<5	**	180	94.2	6	3.1	<5	**	5	2.6	191
91311	<5	**	295	93.1	15	4.7	<5	**	<5	**	317
91316	<5	**	331	90.4	18	4.9	5	1.4	11	3.0	366
91321	<5	**	357	82.1	52	12.0	10	2.3	15	3.5	435
91324	<5	**	256	89.8	18	6.3	10	3.5	<5	**	285
91325	<5	**	293	90.4	20	6.2	6	1.9	<5	**	324
91326	<5	**	240	88.6	16	5.9	5	1.9	9	3.3	271
91329	<5	**	<5	**	<5	**	<5	**	<5	**	2
91331	5	0.3	1,504	87.2	153	8.9	43	2.5	20	1.2	1,725
91334	<5	**	<5	**	<5	**	<5	**	<5	**	2
91335	<5	**	862	90.0	68	7.1	16	1.7	8	0.8	958

Los Angeles County - Department of Public Health
Entry Into Prenatal Care (PNC) By Zip Code*
 Los Angeles County, 2011

Mother's Residential Zip Code	Mother's Trimester Prenatal Care Began										Total Live Births
	No Prenatal Care		First Trimester		Second Trimester		Third Trimester		Unknown		
	Number	Percent	Number	Percent	Number	Percent	Number	Percent	Number	Percent	
91340	<5	**	435	83.5	60	11.5	14	2.7	10	1.9	521
91341	<5	**	<5	**	<5	**	<5	**	<5	**	4
91342	9	0.7	1,074	84.2	149	11.7	28	2.2	15	1.2	1,275
91343	<5	**	828	89.6	71	7.7	12	1.3	12	1.3	924
91344	<5	**	435	90.6	26	5.4	11	2.3	5	1.0	480
91345	<5	**	194	87.8	21	9.5	5	2.3	<5	**	221
91350	<5	**	333	91.0	25	6.8	5	1.4	<5	**	366
91351	<5	**	357	84.6	48	11.4	10	2.4	5	1.2	422
91352	<5	**	627	86.6	64	8.8	20	2.8	10	1.4	724
91353	<5	**	<5	**	<5	**	<5	**	<5	**	1
91354	<5	**	292	92.7	18	5.7	<5	**	<5	**	315
91355	<5	**	280	89.7	23	7.4	5	1.6	<5	**	312
91356	<5	**	258	89.6	18	6.3	<5	**	10	3.5	288
91361	<5	**	19	100.0	<5	**	<5	**	<5	**	19
91362	<5	**	7	100.0	<5	**	<5	**	<5	**	7
91364	<5	**	223	87.5	13	5.1	<5	**	15	5.9	255
91365	<5	**	<5	**	<5	**	<5	**	<5	**	1
91367	<5	**	398	90.9	21	4.8	<5	**	16	3.7	438
91381	<5	**	156	87.6	15	8.4	<5	**	<5	**	178
91384	<5	**	200	88.5	16	7.1	6	2.7	<5	**	226
91386	<5	**	<5	**	<5	**	<5	**	<5	**	1
91387	<5	**	494	85.9	61	10.6	13	2.3	7	1.2	575
91390	<5	**	148	94.3	8	5.1	<5	**	<5	**	157
91393	<5	**	<5	**	<5	**	<5	**	<5	**	1
91396	<5	**	<5	**	<5	**	<5	**	<5	**	1
91401	<5	**	436	88.4	36	7.3	12	2.4	8	1.6	493
91402	<5	**	1,017	89.1	89	7.8	22	1.9	10	0.9	1,142
91403	<5	**	260	89.4	17	5.8	<5	**	13	4.5	291
91404	<5	**	<5	**	<5	**	<5	**	<5	**	4
91405	<5	**	708	89.6	57	7.2	12	1.5	13	1.7	790
91406	<5	**	668	88.5	61	8.1	8	1.1	16	2.1	755
91407	<5	**	<5	**	<5	**	<5	**	<5	**	2
91411	<5	**	332	90.2	22	6.0	5	1.4	7	1.9	368
91413	<5	**	<5	**	<5	**	<5	**	<5	**	2
91423	<5	**	314	85.8	19	5.2	<5	**	29	7.9	366
91432	<5	**	<5	**	<5	**	<5	**	<5	**	1
91436	<5	**	116	92.8	<5	**	<5	**	<5	**	125
91501	<5	**	193	92.3	12	5.7	<5	**	<5	**	209
91502	<5	**	108	87.8	12	9.8	<5	**	<5	**	123
91503	<5	**	<5	**	<5	**	<5	**	<5	**	1
91504	<5	**	240	89.6	21	7.8	<5	**	<5	**	268
91505	<5	**	299	88.2	21	6.2	<5	**	16	4.7	339
91506	<5	**	182	89.7	17	8.4	<5	**	<5	**	203
91601	<5	**	371	84.7	53	12.1	5	1.1	8	1.8	438
91602	<5	**	175	90.7	9	4.7	<5	**	9	4.7	193
91604	<5	**	287	86.5	8	2.4	<5	**	33	9.9	332
91605	<5	**	645	85.8	72	9.6	20	2.7	12	1.6	752
91606	<5	**	501	86.4	60	10.3	7	1.2	10	1.7	580
91607	<5	**	294	82.6	34	9.6	<5	**	25	7.0	356
91608	<5	**	<5	**	<5	**	<5	**	<5	**	1
91616	<5	**	<5	**	<5	**	<5	**	<5	**	1
91617	<5	**	<5	**	<5	**	<5	**	<5	**	1
91702	<5	**	728	79.8	113	12.4	32	3.5	38	4.2	912
91706	<5	**	1,054	88.0	99	8.3	12	1.0	31	2.6	1,198
91711	<5	**	211	91.0	17	7.3	<5	**	<5	**	232
91722	<5	**	403	85.7	44	9.4	6	1.3	16	3.4	470
91723	<5	**	197	83.8	25	10.6	<5	**	10	4.3	235
91724	<5	**	235	82.2	33	11.5	6	2.1	11	3.9	286
91731	<5	**	348	80.4	55	12.7	9	2.1	21	4.9	433
91732	<5	**	745	81.2	99	10.8	18	2.0	51	5.6	917
91733	5	0.7	577	80.1	70	9.7	20	2.8	48	6.7	720
91734	<5	**	<5	**	<5	**	<5	**	<5	**	3
91740	<5	**	233	85.0	24	8.8	<5	**	11	4.0	274

Los Angeles County - Department of Public Health
Entry Into Prenatal Care (PNC) By Zip Code*
 Los Angeles County, 2011

Mother's Residential Zip Code	Mother's Trimester Prenatal Care Began										Total Live Births
	No Prenatal Care		First Trimester		Second Trimester		Third Trimester		Unknown		
	Number	Percent	Number	Percent	Number	Percent	Number	Percent	Number	Percent	
91741	<5	**	191	86.8	21	9.6	<5	**	<5	**	220
91744	6	0.5	1,111	86.2	117	9.1	16	1.2	39	3.0	1,289
91745	<5	**	529	80.8	55	8.4	21	3.2	49	7.5	655
91746	<5	**	373	85.6	43	9.9	<5	**	17	3.9	436
91747	<5	**	<5	**	<5	**	<5	**	<5	**	1
91748	<5	**	889	72.1	111	9.0	66	5.4	167	13.5	1,233
91750	<5	**	238	86.2	26	9.4	<5	**	7	2.5	276
91754	<5	**	293	79.6	27	7.3	11	3.0	36	9.8	368
91755	<5	**	219	71.3	33	10.8	17	5.5	38	12.4	307
91765	<5	**	399	90.3	22	5.0	5	1.1	16	3.6	442
91766	8	0.7	983	82.3	136	11.4	18	1.5	49	4.1	1,194
91767	<5	**	684	84.8	85	10.5	9	1.1	26	3.2	807
91768	<5	**	446	84.5	54	10.2	11	2.1	16	3.0	528
91769	<5	**	<5	**	<5	**	<5	**	<5	**	3
91770	<5	**	632	80.5	62	7.9	17	2.2	73	9.3	785
91771	<5	**	<5	**	<5	**	<5	**	<5	**	1
91773	<5	**	254	84.1	36	11.9	<5	**	10	3.3	302
91775	<5	**	249	89.6	17	6.1	<5	**	10	3.6	278
91776	<5	**	297	83.2	40	11.2	7	2.0	13	3.6	357
91780	<5	**	256	83.7	31	10.1	8	2.6	11	3.6	306
91786	<5	**	<5	**	<5	**	<5	**	<5	**	1
91788	<5	**	<5	**	<5	**	<5	**	<5	**	1
91789	<5	**	263	81.2	30	9.3	11	3.4	20	6.2	324
91790	<5	**	467	85.9	49	9.0	5	0.9	21	3.9	544
91791	<5	**	283	85.0	33	9.9	6	1.8	11	3.3	333
91792	<5	**	328	88.4	19	5.1	<5	**	21	5.7	371
91801	<5	**	462	83.1	57	10.3	10	1.8	27	4.9	556
91803	<5	**	282	84.2	30	9.0	<5	**	21	6.3	335
91805	<5	**	<5	**	<5	**	<5	**	<5	**	1
92037	<5	**	<5	**	<5	**	<5	**	<5	**	2
92397	<5	**	<5	**	<5	**	<5	**	<5	**	2
92532	<5	**	<5	**	<5	**	<5	**	<5	**	1
92553	<5	**	<5	**	<5	**	<5	**	<5	**	1
92820	<5	**	<5	**	<5	**	<5	**	<5	**	1
92880	<5	**	<5	**	<5	**	<5	**	<5	**	1
93001	<5	**	<5	**	<5	**	<5	**	<5	**	1
93307	<5	**	<5	**	<5	**	<5	**	<5	**	1
93510	<5	**	45	86.5	<5	**	<5	**	<5	**	52
93532	<5	**	20	90.9	<5	**	<5	**	<5	**	22
93534	<5	**	431	60.7	231	32.5	38	5.4	6	0.9	710
93535	13	1.0	824	63.8	379	29.3	65	5.0	11	0.9	1,292
93536	<5	**	635	78.1	149	18.3	22	2.7	5	0.6	813
93543	<5	**	103	58.2	57	32.2	11	6.2	<5	**	177
93544	<5	**	6	50.0	5	41.7	<5	**	<5	**	12
93550	17	1.3	849	63.2	404	30.1	62	4.6	12	0.9	1,344
93551	<5	**	395	76.4	106	20.5	11	2.1	<5	**	517
93552	7	1.3	374	66.9	148	26.5	24	4.3	6	1.1	559
93553	<5	**	20	80.0	<5	**	<5	**	<5	**	25
93563	<5	**	<5	**	<5	**	<5	**	<5	**	3
93590	<5	**	<5	**	<5	**	<5	**	<5	**	1
93591	<5	**	40	44.9	35	39.3	10	11.2	<5	**	89
93599	<5	**	<5	**	<5	**	<5	**	<5	**	2
93722	<5	**	<5	**	<5	**	<5	**	<5	**	1
Total	405		106,307		14,554		3,273		5,774		130,313

Note: "Trimester Prenatal Care Began" excludes the prenatal care experiences of all women whose pregnancies did not result in a live birth.

** Results not calculated if less than 5 cases

Source: California Department of Public Health, Center for Health Statistics, OHIR Vital Statistics Section, 2011