

General Fertility Rate

General Fertility Rate

INDICATOR: General Fertility Rate

DEFINITION: The number of live births per 1,000 females 15-44 years (reproductive age)
(15 to 44 years of age; 15-19 years of age; 20-29 years of age; 30-39 years of age; 40-44 years of age)

NUMERATOR: The total number of live births among females of reproductive age, by age group (15-44 years, 15-19 years; 20-29 years; 30-39 years; 40-44 years), by place of residence, in a calendar year

DENOMINATOR: The total number of females of reproductive age by age group (15 to 44 years; 15-19 years; 20-29 years; 30-39 years; 40-44 years), by place of residence, in a calendar year

HEALTHY PEOPLE 2010 OBJECTIVE:
None

HEALTHY PEOPLE 2020 OBJECTIVE:
None

RISK FACTORS: Not applicable

Births to females of reproductive age (15-44 years)

Year	California				Los Angeles County			
	Fertility Rate		95% Confidence Interval		Fertility Rate		95% Confidence Interval	
	Number	Rate	Lower	Upper	Number	Rate	Lower	Upper
2002	527,288	68.6	68.4	68.7	150,544	69.0	68.6	69.3
2003	538,864	69.6	69.5	69.8	151,597	69.8	69.4	70.1
2004	542,738	69.7	69.5	69.9	150,917	69.6	69.3	70.0
2005	546,443	69.9	69.7	70.1	149,677	69.2	68.8	69.5
2006	559,972	71.0	70.9	71.2	151,213	69.5	69.2	69.8
2007	563,972	71.0	70.8	71.2	151,153	69.0	68.7	69.3
2008	549,232	68.7	68.5	68.9	146,998	66.7	66.4	67.1
2009	524,543	65.2	65.0	65.4	139,049	62.8	62.5	63.2
2010	507,968	64.4	64.2	64.6	132,624	60.7	60.4	61.1
2011	499,961	63.2	63.1	63.4	129,710	59.6	59.2	59.9

Year	Denominator: Females 15-44	
	California	LA County
2002	7,689,918	2,182,593
2003	7,737,000	2,173,164
2004	7,784,724	2,167,223
2005	7,820,186	2,164,211
2006	7,881,899	2,175,788
2007	7,940,346	2,190,190
2008	7,994,949	2,202,717
2009	8,043,781	2,212,623
2010	7,888,871	2,183,299
2011	7,905,972	2,177,768

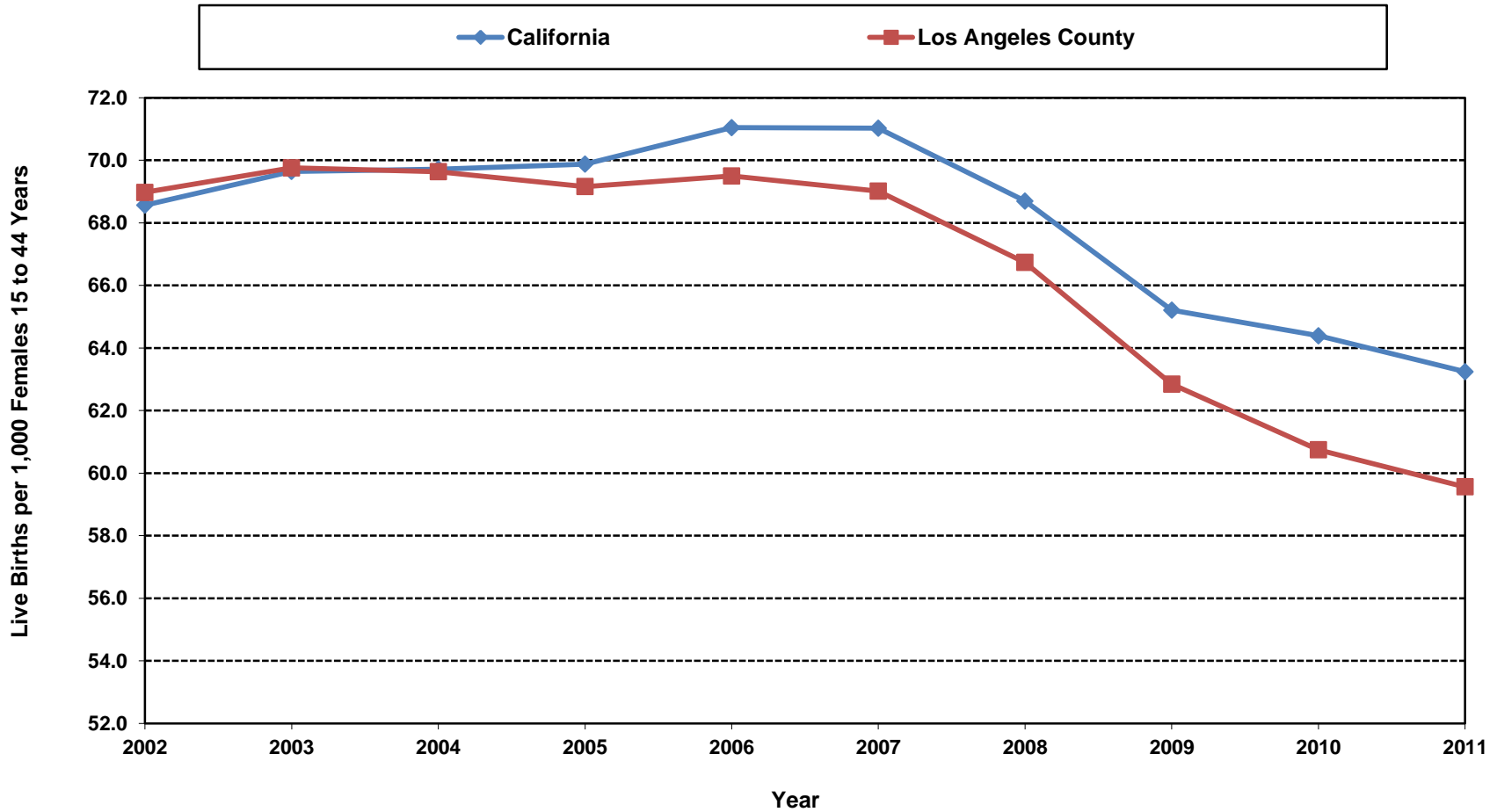
Note: This indicator addresses live births as opposed to pregnancies.

Source: California Department of Public Health, Center for Health Statistics, OHIR Vital Statistics Section, 2002-2011.

California Department of Finance, "Race/Ethnic Population with Age and Sex Detail, 2000-2050", Sacramento, California, July 2007.

California Department of Finance, "Race/Ethnic Population with Age and Sex Detail, 2010-2060", Sacramento, California, January 2013.

**Live Births per 1,000 Females 15 to 44 Years of Age
California vs. Los Angeles County, 2002-2011**



Note: This indicator addresses live births as opposed to pregnancies.

Source: California Department of Public Health, Center for Health Statistics, OHIR Vital Statistics Section, 2002-2011.

California Department of Finance, "Race/Ethnic Population with Age and Sex Detail, 2010-2060", Sacramento, California, January 2013.

2010 Census Summary File 1 - California: Single Years of Age and Sex: 2010, Prepared by the Census Bureau, 2011.

2010 Census Summary File 1 - Los Angeles: Single Years of Age and Sex: 2010, Prepared by the Census Bureau, 2011.

Births to adolescent females (15-19 years)

Year	California				Los Angeles County			
	Fertility Rate		95% Confidence Interval		Fertility Rate		95% Confidence Interval	
	Number	Rate	Lower	Upper	Number	Rate	Lower	Upper
2002	50,201	40.7	40.4	41.1	14,510	44.2	43.5	44.9
2003	49,330	39.1	38.7	39.4	13,997	41.9	41.2	42.6
2004	49,737	38.2	37.9	38.6	14,182	41.1	40.4	41.7
2005	50,017	37.2	36.9	37.5	13,957	38.7	38.1	39.3
2006	52,770	37.8	37.5	38.1	14,794	38.9	38.3	39.5
2007	53,399	37.1	36.8	37.4	14,733	36.9	36.3	37.5
2008	51,704	35.2	34.9	35.5	14,111	34.0	33.5	34.6
2009	47,811	32.1	31.8	32.4	13,146	30.9	30.4	31.5
2010	43,127	31.5	31.2	31.7	11,677	31.7	31.2	32.3
2011	38,328	28.0	27.7	28.3	10,359	28.8	28.2	29.3

Note: This indicator addresses live births as opposed to pregnancies.

Source: California Department of Public Health, Center for Health Statistics, OHIR Vital Statistics Section, 2002-2011.

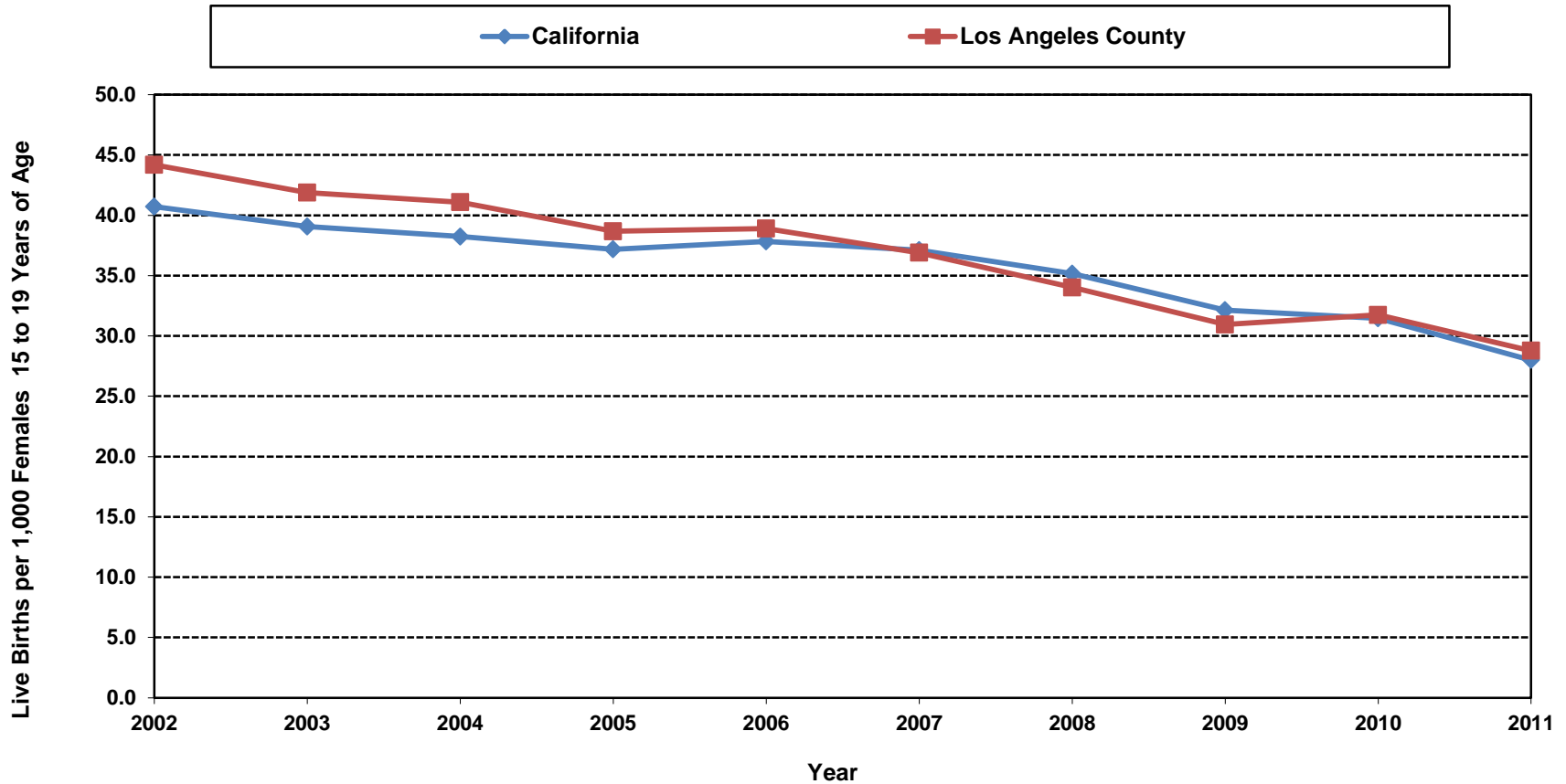
California Department of Public Health, Center for Health Statistics, OHIR Vital Statistics Section, 2011.

California Department of Finance, "Race/Ethnic Population with Age and Sex Detail, 2000-2050", Sacramento, California, July 2007.

California Department of Finance, "Race/Ethnic Population with Age and Sex Detail, 2010-2060", Sacramento, California, January 2013.

Year	Denominator: Females 15-19	
	California	LA County
2002	1,233,107	328,301
2003	1,262,601	334,251
2004	1,300,741	345,209
2005	1,345,176	360,813
2006	1,395,105	380,339
2007	1,438,740	399,306
2008	1,470,271	414,775
2009	1,488,207	424,927
2010	1,371,064	367,817
2011	1,368,733	360,060

**Live Births per 1,000 Females 15 to 19 Years of Age
California vs. Los Angeles County, 2002-2011**



Note: This indicator addresses live births as opposed to pregnancies.

Source: California Department of Public Health, Center for Health Statistics, OHIR Vital Statistics Section, 2002-2011.

California Department of Public Health, Center for Health Statistics, OHIR Vital Statistics Section, 2011.

California Department of Finance, "Race/Ethnic Population with Age and Sex Detail, 2000-2050", Sacramento, California, July 2007.

California Department of Finance, "Race/Ethnic Population with Age and Sex Detail, 2010-2060", Sacramento, California, January 2013.

Births to females of reproductive age (20-29 years)

Year	California				Los Angeles County			
	Fertility Rate		95% Confidence Interval		Fertility Rate		95% Confidence Interval	
	Number	Rate	Lower	Upper	Number	Rate	Lower	Upper
2002	260,293	111.5	111.1	111.9	73,778	110.5	109.7	111.2
2003	264,371	112.9	112.5	113.3	73,468	112.9	112.1	113.6
2004	265,917	112.7	112.3	113.1	72,615	113.4	112.7	114.2
2005	268,975	112.9	112.5	113.3	71,552	112.3	111.6	113.1
2006	277,406	114.1	113.7	114.5	71,690	110.9	110.2	111.7
2007	278,501	112.3	111.9	112.7	71,674	108.9	108.2	109.7
2008	269,325	105.9	105.5	106.3	69,284	102.8	102.1	103.5
2009	254,883	97.5	97.2	97.9	64,489	93.1	92.4	93.8
2010	244,453	91.6	91.2	91.9	60,828	81.7	81.1	82.3
2011	237,278	88.7	88.4	89.0	58,809	78.9	78.2	79.5

Year	Denominator: Females 20-29	
	California	LA County
2002	2,333,641	667,861
2003	2,341,205	650,931
2004	2,359,041	640,111
2005	2,382,558	636,940
2006	2,430,489	646,204
2007	2,480,758	657,946
2008	2,543,749	674,128
2009	2,613,334	692,505
2010	2,668,969	744,359
2011	2,675,319	745,756

Note: This indicator addresses live births as opposed to pregnancies.

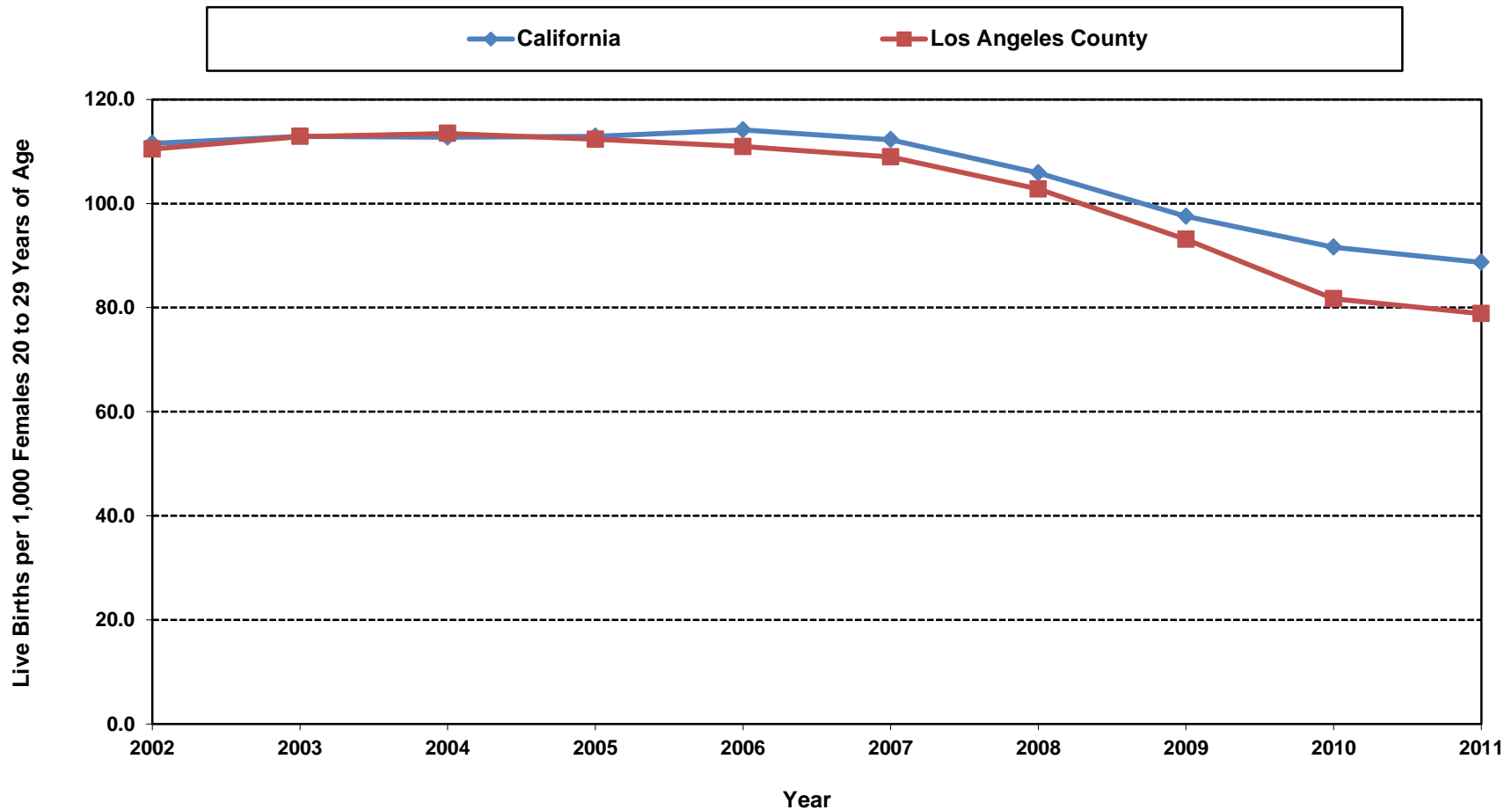
Source: California Department of Public Health, Center for Health Statistics, OHIR Vital Statistics Section, 2002-2011.

California Department of Public Health, Center for Health Statistics, OHIR Vital Statistics Section, 2011.

California Department of Finance, "Race/Ethnic Population with Age and Sex Detail, 2000-2050", Sacramento, California, July 2007.

California Department of Finance, "Race/Ethnic Population with Age and Sex Detail, 2010-2060", Sacramento, California, January 2013.

**Live Births per 1,000 Females 20 to 29 Years of Age
California vs. Los Angeles County, 2002-2011**



Note: This indicator addresses live births as opposed to pregnancies.

Source: California Department of Public Health, Center for Health Statistics, OHIR Vital Statistics Section, 2002-2011.

California Department of Public Health, Center for Health Statistics, OHIR Vital Statistics Section, 2011.

California Department of Finance, "Race/Ethnic Population with Age and Sex Detail, 2000-2050", Sacramento, California, July 2007.

California Department of Finance, "Race/Ethnic Population with Age and Sex Detail, 2010-2060", Sacramento, California, January 2013.

Births to females of reproductive age (30-39 years)

Year	California				Los Angeles County			
	Fertility Rate		95% Confidence Interval		Fertility Rate		95% Confidence Interval	
	Number	Rate	Lower	Upper	Number	Rate	Lower	Upper
2002	200,241	73.6	73.3	73.9	57,283	71.8	71.2	72.4
2003	207,471	76.6	76.3	76.9	58,827	74.3	73.7	74.9
2004	209,158	78.0	77.7	78.3	58,723	75.3	74.8	75.9
2005	209,469	79.0	78.7	79.3	58,754	76.9	76.3	77.5
2006	211,224	80.3	80.0	80.6	59,182	79.0	78.3	79.6
2007	213,803	81.9	81.6	82.2	59,219	80.4	79.8	81.0
2008	209,552	81.0	80.7	81.4	57,894	80.2	79.6	80.8
2009	203,546	79.6	79.3	80.0	55,860	79.0	78.4	79.7
2010	201,867	79.1	78.8	79.5	54,623	76.5	75.9	77.2
2011	205,327	80.5	80.2	80.8	54,990	77.3	76.7	77.9

Denominator: Females 30-39		
Year	California	LA County
2002	2,720,943	797,705
2003	2,709,218	791,903
2004	2,682,040	779,415
2005	2,651,522	763,695
2006	2,630,656	749,555
2007	2,610,962	736,503
2008	2,585,577	721,896
2009	2,556,503	706,872
2010	2,550,575	713,591
2011	2,550,280	711,516

Note: This indicator addresses live births as opposed to pregnancies.

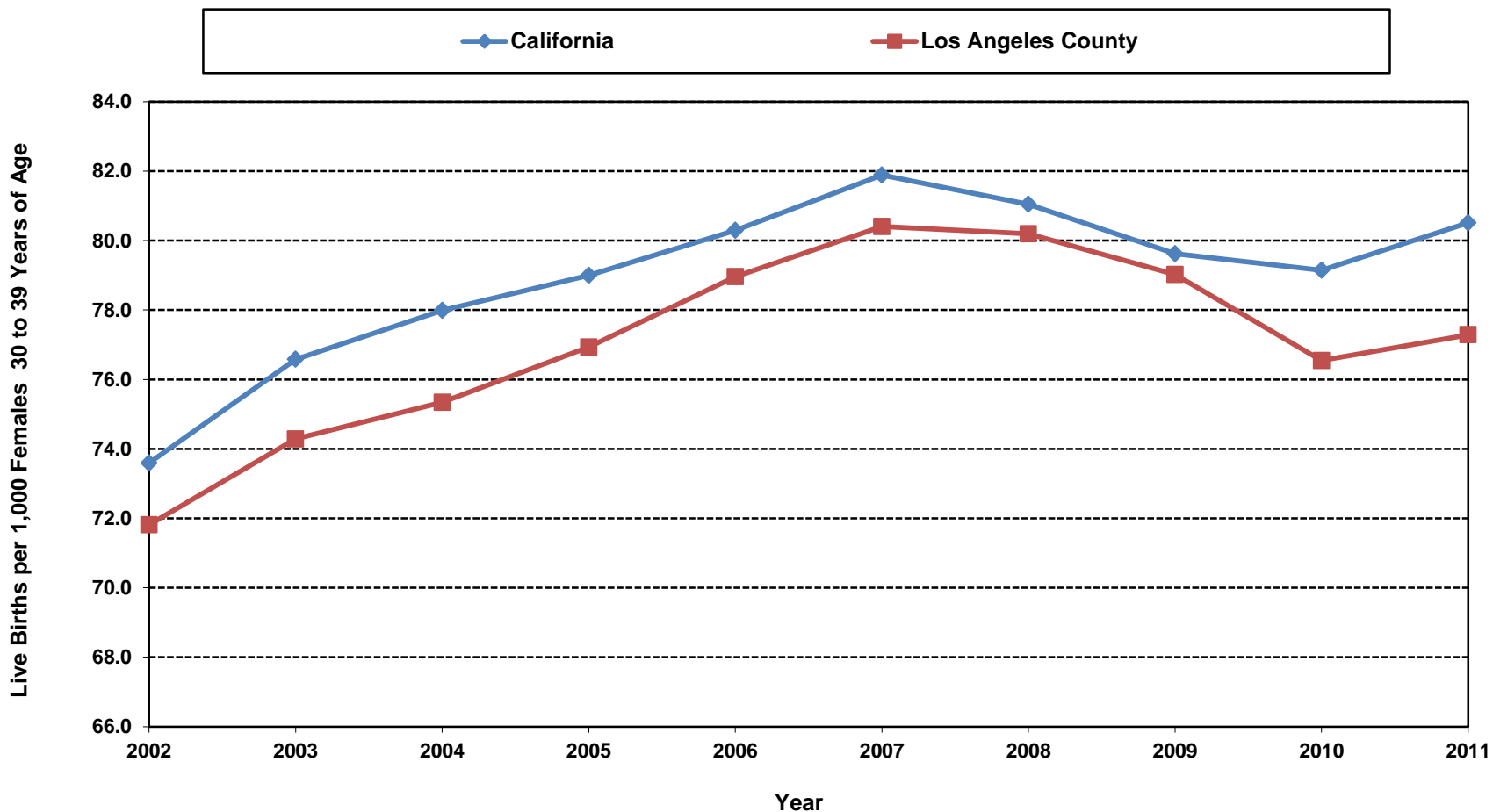
Source: California Department of Public Health, Center for Health Statistics, OHIR Vital Statistics Section, 2002-2011.

California Department of Public Health, Center for Health Statistics, OHIR Vital Statistics Section, 2011.

California Department of Finance, "Race/Ethnic Population with Age and Sex Detail, 2000-2050", Sacramento, California, July 2007.

California Department of Finance, "Race/Ethnic Population with Age and Sex Detail, 2010-2060", Sacramento, California, January 2013.

**Live Births per 1,000 Females 30 to 39 Years of Age
California vs. Los Angeles County, 2002-2011**



Note: This indicator addresses live births as opposed to pregnancies.

Source: California Department of Public Health, Center for Health Statistics, OHIR Vital Statistics Section, 2002-2011.

California Department of Public Health, Center for Health Statistics, OHIR Vital Statistics Section, 2011.

California Department of Finance, "Race/Ethnic Population with Age and Sex Detail, 2000-2050", Sacramento, California, July 2007.

California Department of Finance, "Race/Ethnic Population with Age and Sex Detail, 2010-2060", Sacramento, California, January 2013.

Births to females of reproductive age (40-44 years)

Year	California				Los Angeles County			
	Fertility Rate		95% Confidence Interval		Fertility Rate		95% Confidence Interval	
	Number	Rate	Lower	Upper	Number	Rate	Lower	Upper
2002	16,553	11.8	11.6	12.0	4,973	12.8	12.4	13.1
2003	17,692	12.4	12.2	12.6	5,305	13.4	13.0	13.8
2004	17,926	12.4	12.2	12.6	5,397	13.4	13.1	13.8
2005	17,982	12.5	12.3	12.7	5,414	13.4	13.1	13.8
2006	18,572	13.0	12.8	13.2	5,547	13.9	13.5	14.2
2007	18,269	13.0	12.8	13.1	5,527	13.9	13.6	14.3
2008	18,651	13.4	13.2	13.6	5,709	14.6	14.2	14.9
2009	18,303	13.2	13.0	13.4	5,554	14.3	13.9	14.7
2010	18,521	14.3	14.1	14.5	5,496	15.4	15.0	15.8
2011	19,028	14.5	14.3	14.7	5,552	15.4	15.0	15.8

Denominator: Females 40-44		
Year	California	LA County
2002	1,402,227	388,726
2003	1,423,976	396,079
2004	1,442,902	402,488
2005	1,440,930	402,763
2006	1,425,649	399,690
2007	1,409,886	396,435
2008	1,395,352	391,918
2009	1,385,737	388,319
2010	1,298,263	357,532
2011	1,311,640	360,436

Note: This indicator addresses live births as opposed to pregnancies.

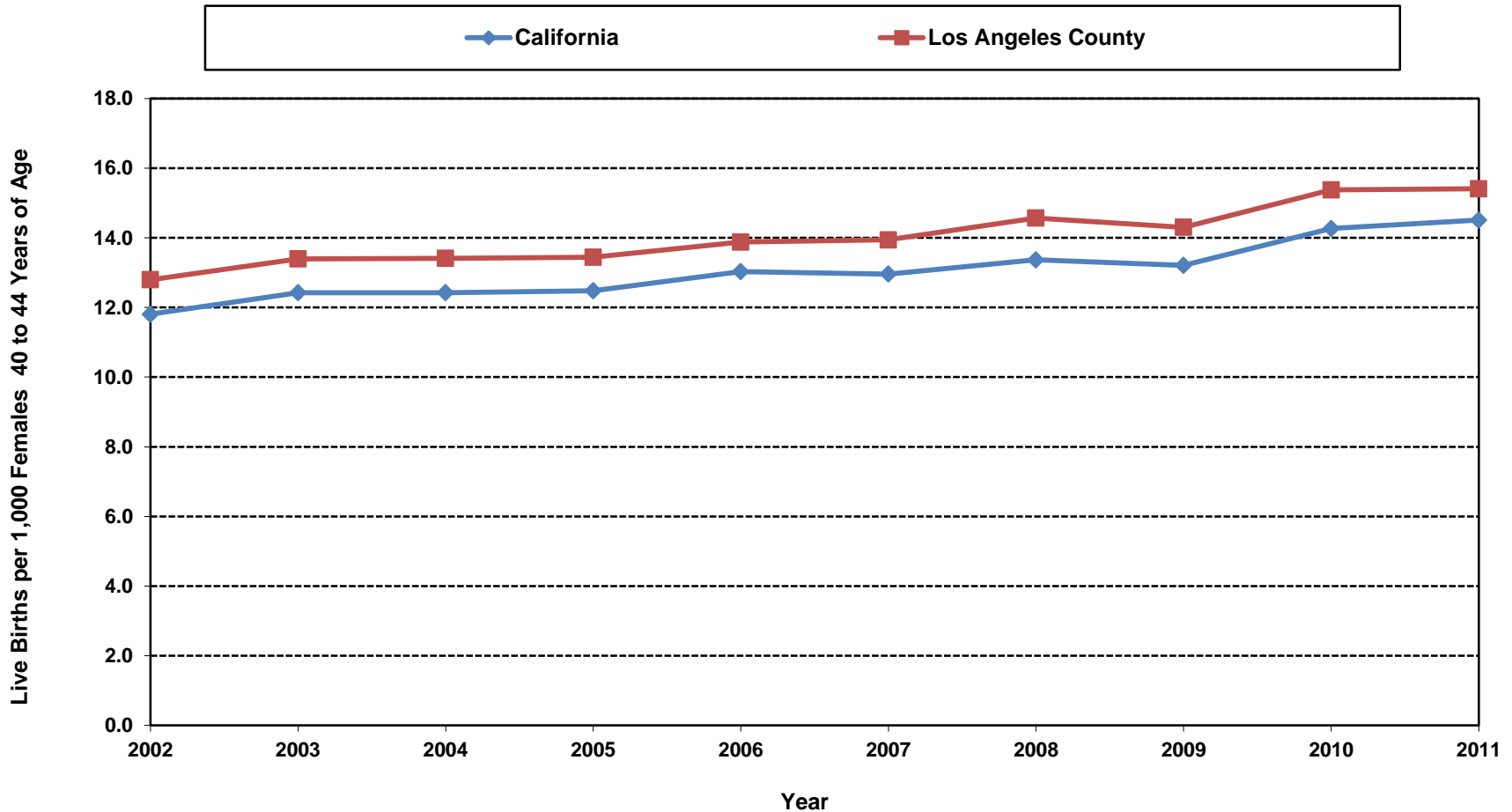
Source: California Department of Public Health, Center for Health Statistics, OHIR Vital Statistics Section, 2002-2011.

California Department of Public Health, Center for Health Statistics, OHIR Vital Statistics Section, 2011.

California Department of Finance, "Race/Ethnic Population with Age and Sex Detail, 2000-2050", Sacramento, California, July 2007.

California Department of Finance, "Race/Ethnic Population with Age and Sex Detail, 2010-2060", Sacramento, California, January 2013.

**Live Births per 1,000 Females 40 to 44 Years of Age
California vs. Los Angeles County, 2002-2011**



Note: This indicator addresses live births as opposed to pregnancies.

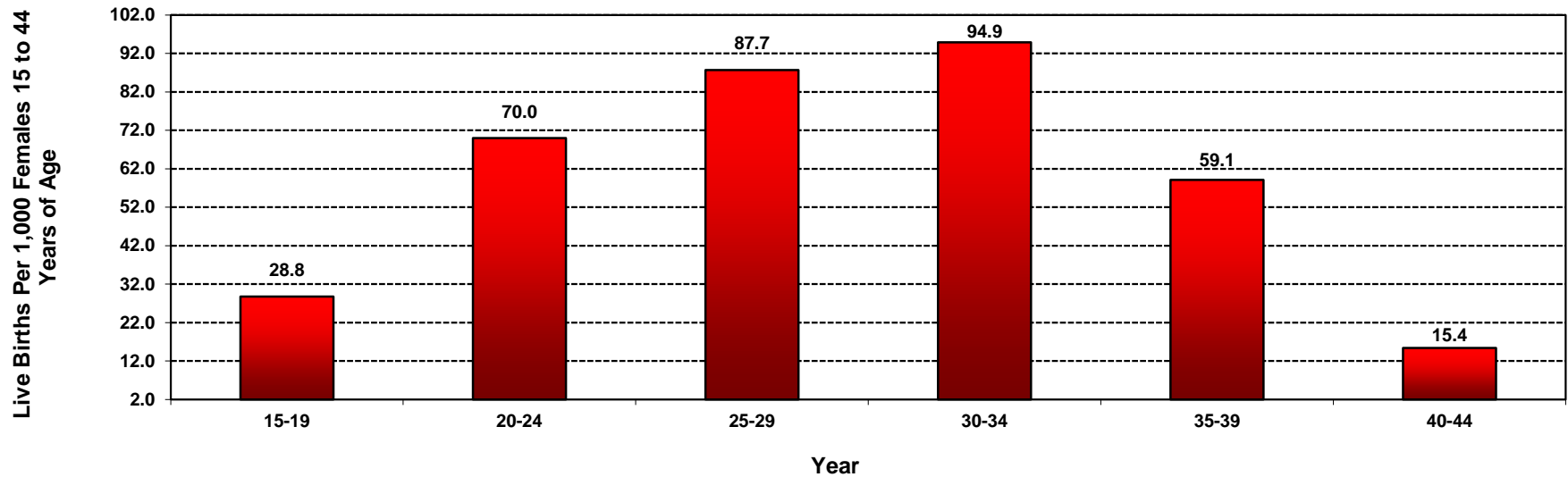
Source: California Department of Public Health, Center for Health Statistics, OHIR Vital Statistics Section, 2002-2011.

California Department of Public Health, Center for Health Statistics, OHIR Vital Statistics Section, 2011.

California Department of Finance, "Race/Ethnic Population with Age and Sex Detail, 2000-2050", Sacramento, California, July 2007.

California Department of Finance, "Race/Ethnic Population with Age and Sex Detail, 2010-2060", Sacramento, California, January 2013.

**Age Specific Fertility for Females 15 to 44 Years of Age,
Los Angeles County, 2011**

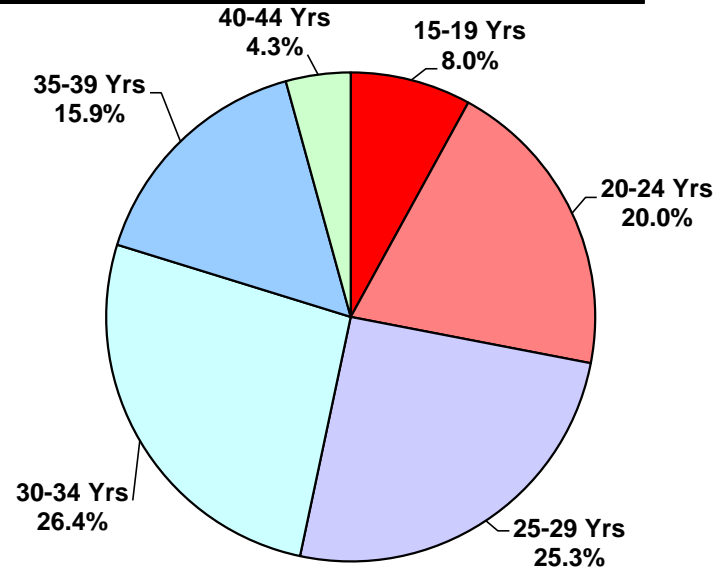


Los Angeles County, 2011		
Age Group	Live Births to Mothers 15 to 44 Years of Age	
	Number	Rate per 1,000 Females 15-44
15-19	10,359	28.8
20-24	26,001	70.0
25-29	32,808	87.7
30-34	34,304	94.9
35-39	20,686	59.1
40-44	5,552	15.4
Total	129,710	59.6

Denominator: Female Population 15-44 Years of Age
360,060
371,549
374,207
361,553
349,963
360,436
2,177,768

Source: California Department of Public Health, Center for Health Statistics, OHIR Vital Statistics Section, 2011.
 California Department of Finance, "Race/Ethnic Population with Age and Sex Detail, 2000-2050", Sacramento, California, July 2007.
 California Department of Finance, "Race/Ethnic Population with Age and Sex Detail, 2010-2060", Sacramento, California, January 2013.

**Percent of Live Births to Mothers 15-44 Years
by Mother's Age
Los Angeles County, 2011**



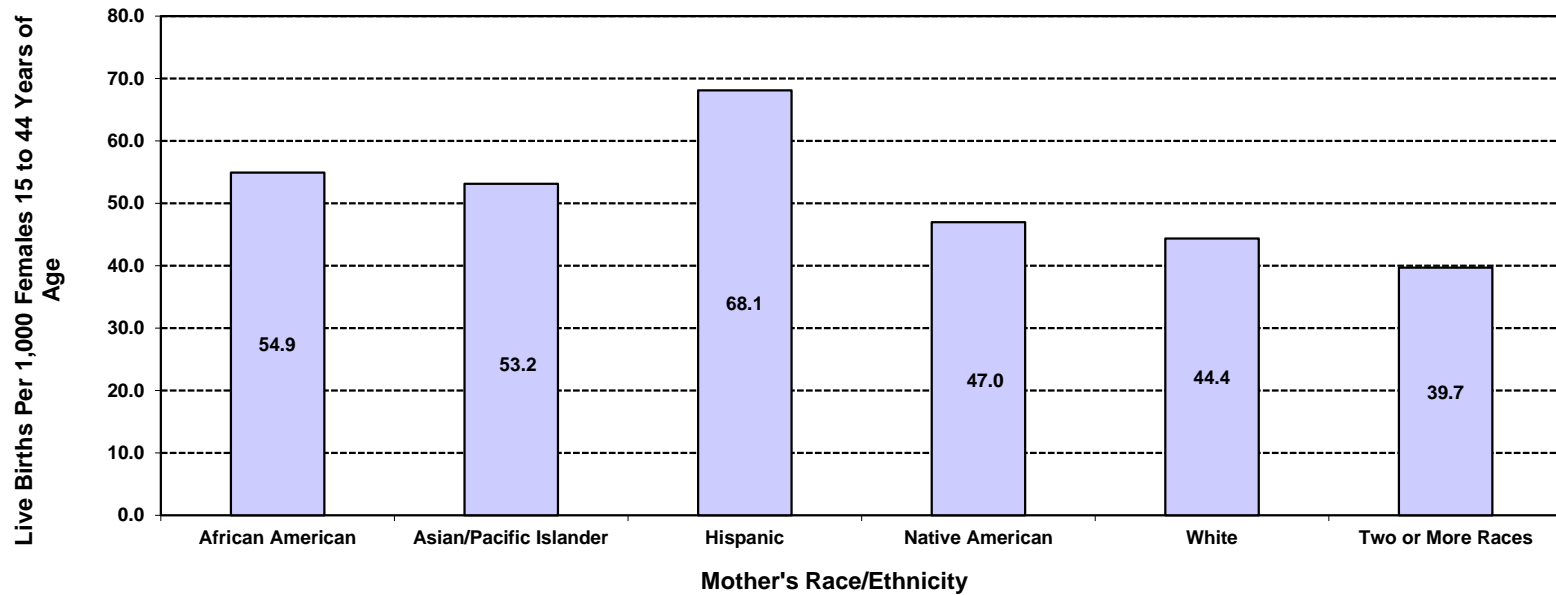
Los Angeles County, 2011				
Mother's Age	Live Births		95% Confidence Interval	
	Number	Percent	Lower	Upper
15-19 Yrs	10,359	8.0	7.8	8.1
20-24 Yrs	26,001	20.0	19.8	20.3
25-29 Yrs	32,808	25.3	25.1	25.5
30-34 Yrs	34,304	26.4	26.2	26.7
35-39 Yrs	20,686	15.9	15.7	16.1
40-44 Yrs	5,552	4.3	4.2	4.4
Total	129,710	100.0	100.0	100.0

Source: California Department of Public Health, Center for Health Statistics, OHIR Vital Statistics Section, 2011.

California Department of Finance, "Race/Ethnic Population with Age and Sex Detail, 2000-2050", Sacramento, California, July 2007.

California Department of Finance, "Race/Ethnic Population with Age and Sex Detail, 2010-2060", Sacramento, California, January 2013.

**Race/Ethnicity Specific Fertility for Females 15 to 44 Years of Age
Los Angeles County, 2011**



Los Angeles County, 2011		
Mother's Race/Ethnicity	Mothers 15 to 44 Years of Age	
	Number	Rate per 1,000 Females 15-44
African American	9,758	54.9
Asian/Pacific Islander	16,046	53.2
Hispanic	77,758	68.1
Native American	191	47.0
White	22,512	44.4
Two or More Races	1,781	39.7
Total	129,710	59.6

Denominator: Female Population 15-44 Years of Age
177,656
301,865
1,141,769
4,068
507,559
44,850
2,177,767

Racial/ethnic categorization has been revised in this report; data from previous year reports may not be comparable.

Note: African American, Asian/Pacific Islander, Native American, White and other races exclude Hispanic ethnicity. Hispanic includes any race category.

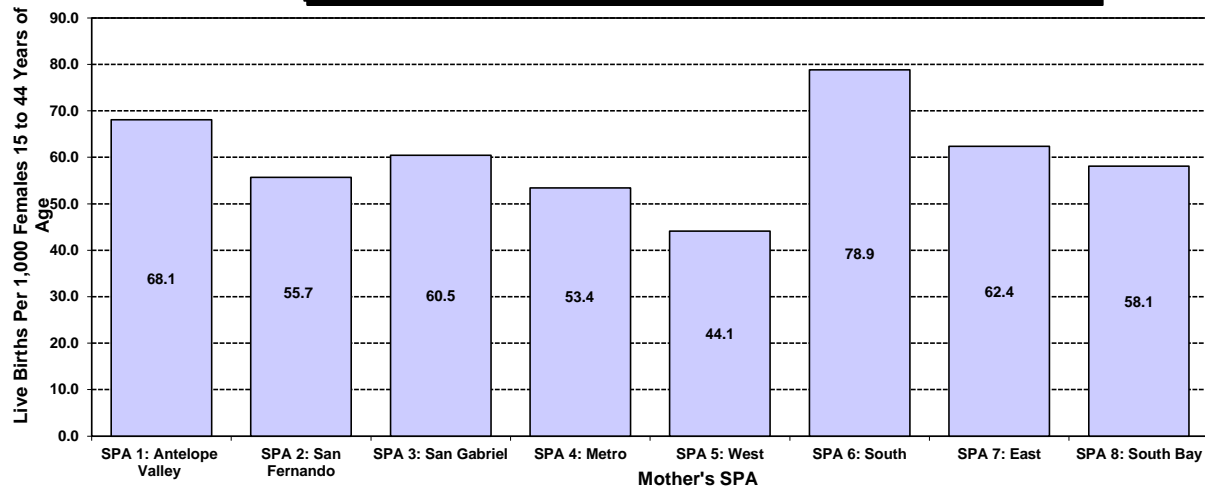
Numbers fewer than 5 are shown as "<5". Rates are not calculated (N/C) if number is fewer than five.

Source: California Department of Public Health, Center for Health Statistics, OHIR Vital Statistics Section, 2011.

California Department of Finance, "Race/Ethnic Population with Age and Sex Detail, 2000-2050", Sacramento, California, July 2007.

California Department of Finance, "Race/Ethnic Population with Age and Sex Detail, 2010-2060", Sacramento, California, January 2013.

**Fertility for Females 15 to 44 Years of Age by Service Planning Area (SPA)
Los Angeles County, 2011**



Los Angeles County, 2011		
Mother's SPA of Residence	Mothers 15 to 44 Years of Age	
	Number	Rate per 1,000 Females 15-44
SPA 1: Antelope Valley	5,599	68.1
SPA 2: San Fernando	25,217	55.7
SPA 3: San Gabriel	22,144	60.5
SPA 4: Metro	13,859	53.4
SPA 5: West	6,651	44.1
SPA 6: South	18,788	78.9
SPA 7: East	17,977	62.4
SPA 8: South Bay	19,181	58.1
Total	129,710	59.6

Denominator: Female Population 15-44 Years of Age
82,249
452,829
366,228
259,496
150,692
238,242
288,243
330,202
2,177,768

Racial/ethnic categorization has been revised in this report; data from previous year reports may not be comparable.

Note: African American, Asian/Pacific Islander, Native American, White and other races exclude Hispanic ethnicity. Hispanic includes any race category.

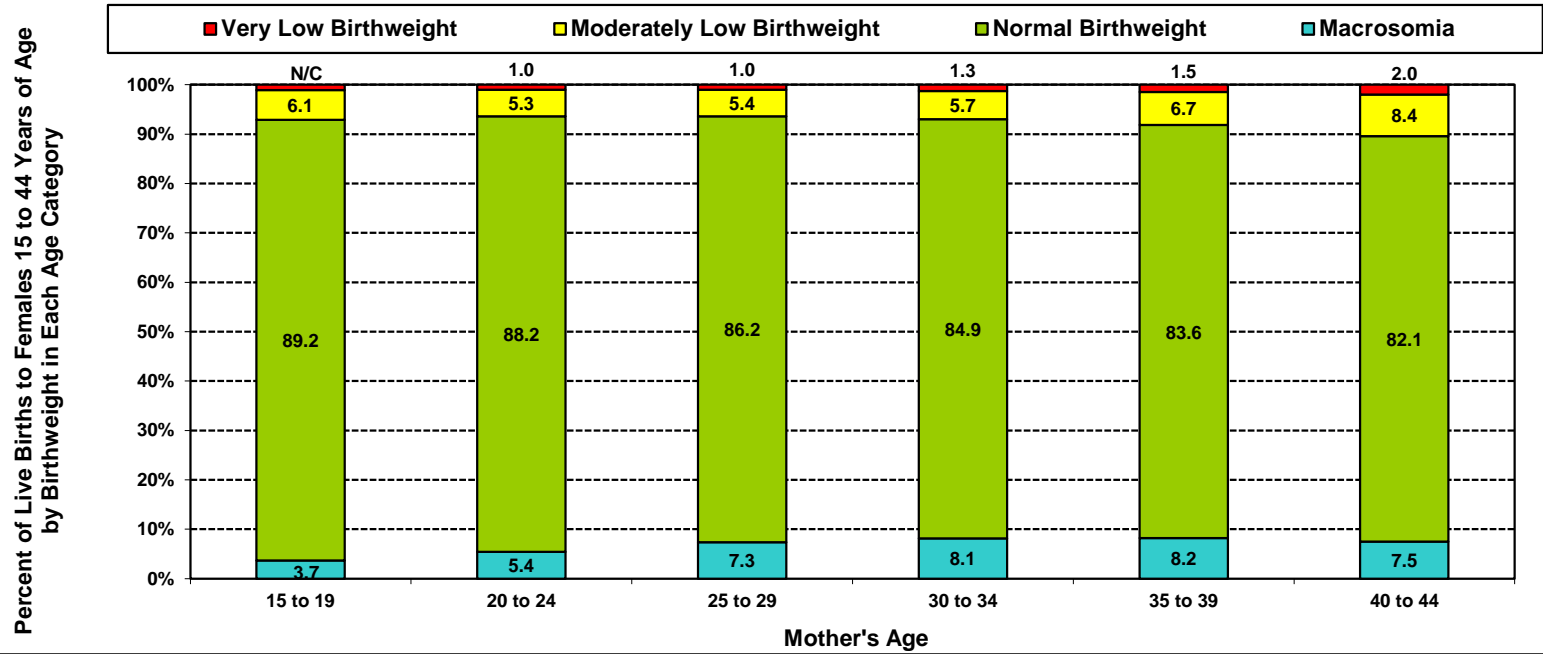
Numbers fewer than 5 are shown as "<5". Rates are not calculated (N/C) if number is fewer than five.

Source: California Department of Public Health, Center for Health Statistics, OHIR Vital Statistics Section, 2011.

California Department of Finance, "Race/Ethnic Population with Age and Sex Detail, 2010-2060", Sacramento, California, January 2013.

July 1, 2010 Population Estimates, prepared by Walter R. McDonald & Associates, Inc. (WRMA) for Urban Research, Los Angeles County ISD, released September 30, 2012.

**Percent of Live Births to Mothers 15 to 44 Years
by Birthweight and by Mother's Age
Los Angeles County, 2011**

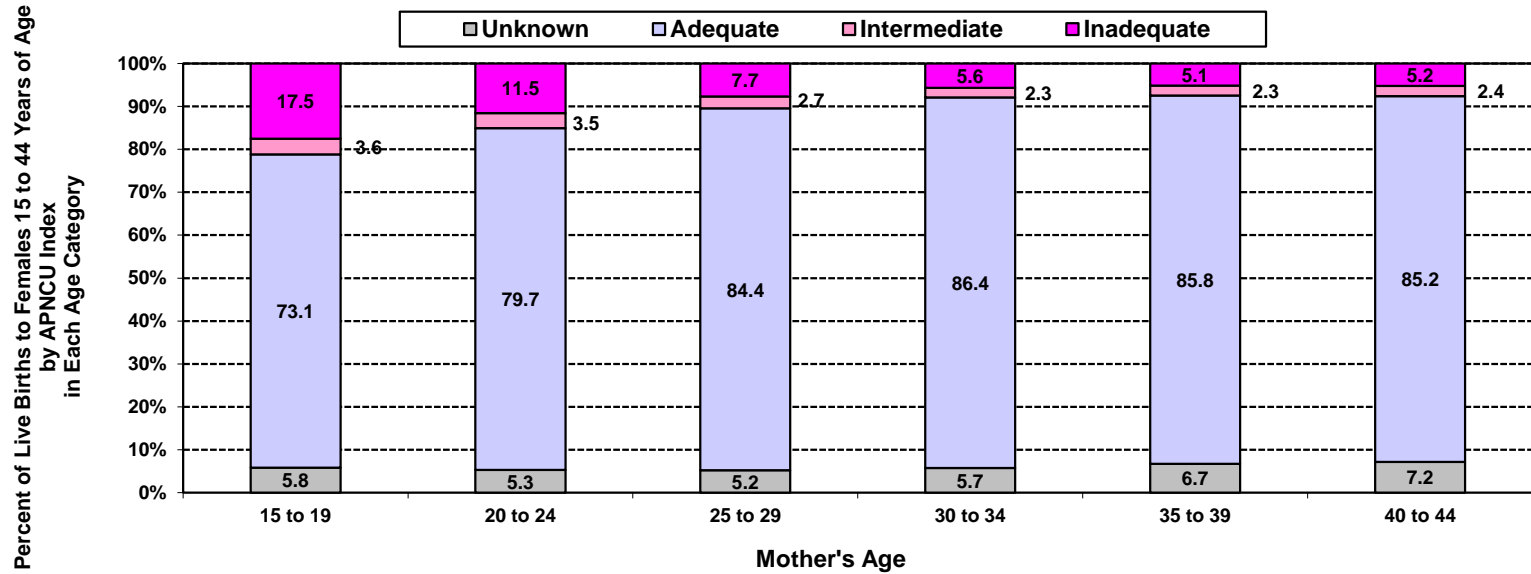


Los Angeles County, 2011								
Mother's Age	Very Low Birthweight		Moderately Low Birthweight		Normal Birthweight		Macrosomia	
	0 to 1,499 grams		1,500 to 2,499 grams		2,500 to 3,999 grams		4,000+ grams	
	Number	Percent	Number	Percent	Number	Percent	Number	Percent
15 to 19	110	1.1	628	6.1	9,242	89.2	379	3.7
20 to 24	264	1.0	1,390	5.3	22,935	88.2	1,412	5.4
25 to 29	340	1.0	1,766	5.4	28,291	86.2	2,411	7.3
30 to 34	438	1.3	1,950	5.7	29,122	84.9	2,794	8.1
35 to 39	303	1.5	1,383	6.7	17,297	83.6	1,702	8.2
40 to 44	111	2.0	468	8.4	4,557	82.1	416	7.5
Total	1,566	1.2	7,585	5.8	111,444	85.9	9,114	7.0

Total Live Births
10,359
26,001
32,808
34,304
20,686
5,552
129,710

Note: Numbers fewer than 5 are shown as "<5". Rates are not calculated (N/C) if number is fewer than five.
Source: California Department of Public Health, Center for Health Statistics, OHIR Vital Statistics Section, 2011.
California Department of Finance, "Race/Ethnic Population with Age and Sex Detail, 2000-2050", Sacramento, California, July 2007.
California Department of Finance, "Race/Ethnic Population with Age and Sex Detail, 2010-2060", Sacramento, California, January 2013.

**Percent of Live Births to Mothers 15 to 44 Years of Age
by Adequacy of Prenatal Care Utilization Index and by Mother's Age
Los Angeles County, 2011**



Los Angeles County, 2011									Total Live Births
Mother's Age	Adequacy of Prenatal Care Utilization Index								
	Adequate		Intermediate		Inadequate		Unknown		
	Number	Percent	Number	Percent	Number	Percent	Number	Percent	
15 to 19	7,569	73.1	375	3.6	1,817	17.5	598	5.8	10,359
20 to 24	20,722	79.7	909	3.5	2,997	11.5	1,373	5.3	26,001
25 to 29	27,690	84.4	902	2.7	2,513	7.7	1,703	5.2	32,808
30 to 34	29,634	86.4	772	2.3	1,938	5.6	1,960	5.7	34,304
35 to 39	17,758	85.8	480	2.3	1,060	5.1	1,388	6.7	20,686
40 to 44	4,733	85.2	132	2.4	290	5.2	397	7.2	5,552
Total	108,106	83.3	3,570	2.8	10,615	8.2	7,419	5.7	129,710

Year 2010 Objectives: Increase the proportion of pregnant women who receive early and adequate prenatal care to 90 percent of live births.

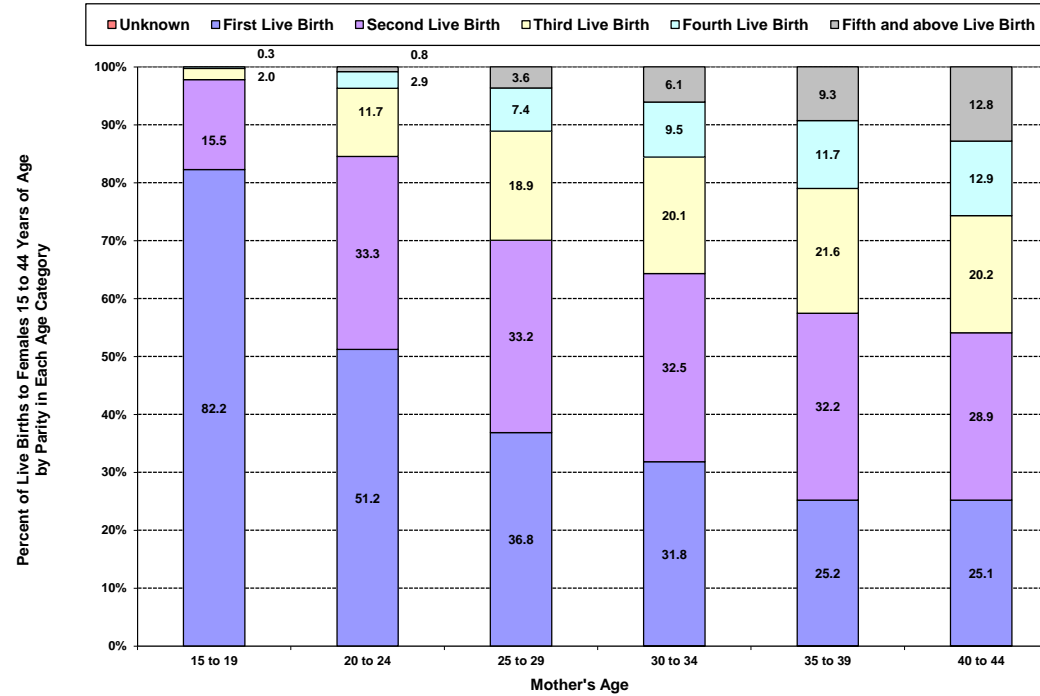
Year 2020 Objectives: Increase the proportion of pregnant women who receive early and adequate prenatal care to 77.9 percent of live births.

Note: The APNCU Index measures prenatal care utilization, which includes consideration of the month prenatal care began and the number of prenatal care visits during the time mothers actually received prenatal care. This utilization index is based on the recommendations established by the American College of Obstetrics and Gynecologists (ACOG). Appendix A contains the specific criteria for timing and number of prenatal care visits that are used to assign adequacy categories.

Numbers fewer than 5 are shown as "<5". Rates are not calculated (N/C) if number is fewer than five.

Source: California Department of Public Health, Center for Health Statistics, OHIR Vital Statistics Section, 2011.

**Percent of Live Births to Mothers 15 to 44 Years of Age
by Parity and by Mother's Age
Los Angeles County, 2011**



Los Angeles County, 2011													Total Live Births
Mother's Age	Parity												
	First Live Birth		Second Live Birth		Third Live Birth		Fourth Live Birth		Fifth+ Live Birth		Unknown		
	Number	Percent	Number	Percent	Number	Percent	Number	Percent	Number	Percent	Number	Percent	
15 to 19	8,520	82.2	1,607	15.5	203	2.0	26	0.3	<5	N/C	<5	N/C	10,359
20 to 24	13,316	51.2	8,658	33.3	3,053	11.7	747	2.9	220	0.8	7		26,001
25 to 29	12,089	36.8	10,880	33.2	6,194	18.9	2,438	7.4	1,196	3.6	11	0.0	32,808
30 to 34	10,900	31.8	11,151	32.5	6,893	20.1	3,254	9.5	2,088	6.1	18	0.1	34,304
35 to 39	5,203	25.2	6,671	32.2	4,458	21.6	2,413	11.7	1,924	9.3	17	0.1	20,686
40 to 44	1,394	25.1	1,605	28.9	1,122	20.2	715	12.9	711	12.8	5	0.1	5,552
Total	51,422	39.6	40,572	31.3	21,923	16.9	9,593	7.4	6,139	4.7	61	0.0	129,710

Note: Parity = number of pregnancies resulting in live births to a woman.

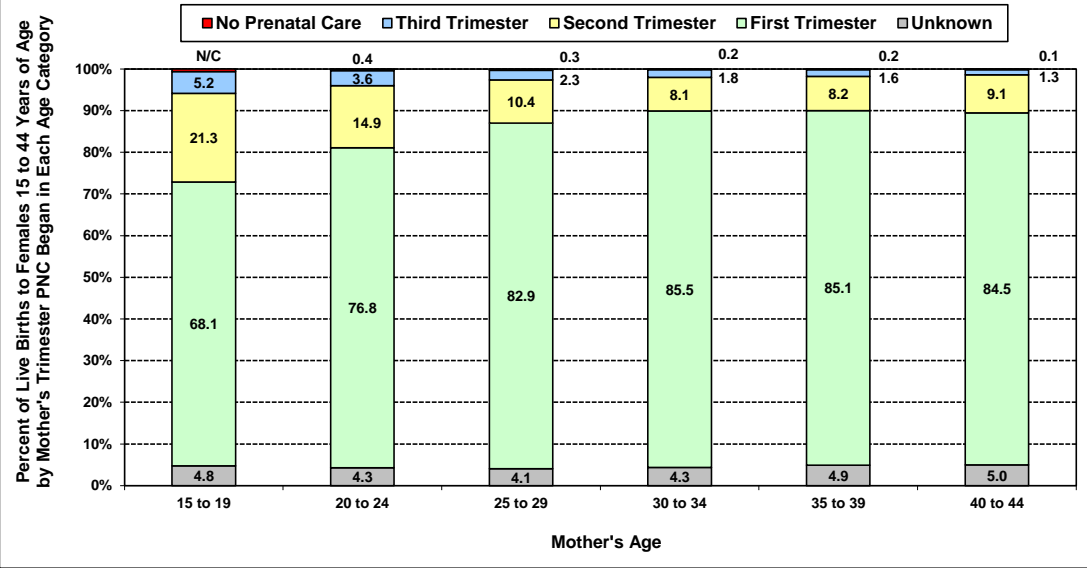
Numbers fewer than 5 are shown as "<5". Rates are not calculated (N/C) if number is fewer than five.

Source: California Department of Public Health, Center for Health Statistics, OHIR Vital Statistics Section, 2011.

California Department of Finance, "Race/Ethnic Population with Age and Sex Detail, 2000-2050", Sacramento, California, July 2007.

California Department of Finance, "Race/Ethnic Population with Age and Sex Detail, 2010-2060", Sacramento, California, January 2013.

**Percent of Live Births to Mothers 15 to 44 Years of Age
by Mother's Trimester Prenatal Care (PNC) Began and by Mother's Age
Los Angeles County, 2011**



Los Angeles County, 2011											Total Live Births
Mother's Age	Mother's Trimester Prenatal Care Began										
	No Prenatal Care		First		Second		Third		Unknown		
	Number	Percent	Number	Percent	Number	Percent	Number	Percent	Number	Percent	
15 to 19	69	0.7	7,051	68.1	2,204	21.3	540	5.2	495	4.8	10,359
20 to 24	116	0.4	19,964	76.8	3,882	14.9	925	3.6	1,114	4.3	26,001
25 to 29	98	0.3	27,207	82.9	3,400	10.4	767	2.3	1,336	4.1	32,808
30 to 34	70	0.2	29,345	85.5	2,782	8.1	618	1.8	1,489	4.3	34,304
35 to 39	39	0.2	17,607	85.1	1,698	8.2	333	1.6	1,009	4.9	20,686
40 to 44	8	0.1	4,692	84.5	504	9.1	72	1.3	276	5.0	5,552
Total	400	0.3	105,866	81.6	14,470	11.2	3,255	2.5	5,719	4.4	129,710

2010 Objective: Increase the proportion of pregnant women who receive prenatal care in the first trimester of pregnancy to 90 percent of live births.

2020 Objective: Increase the proportion of pregnant women who receive prenatal care in the first trimester of pregnancy to 77.9 percent of live births.

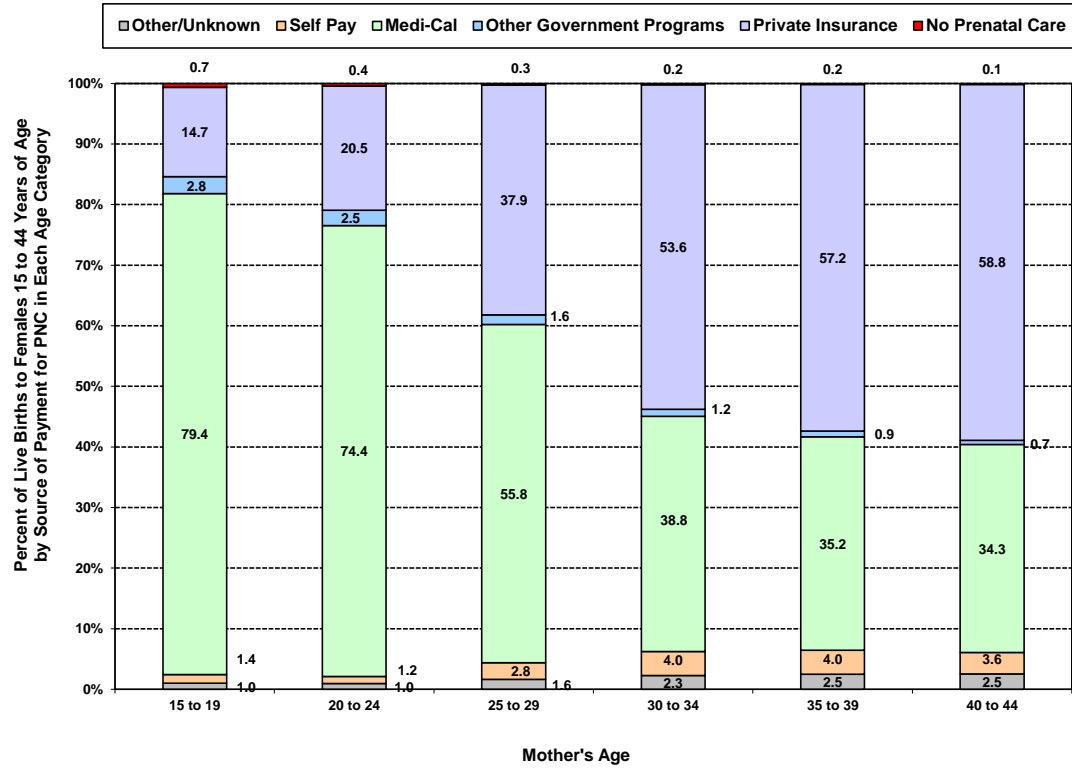
Note: Trimester Prenatal Care (PNC) Began excludes the prenatal care experiences of all women whose pregnancies did not result in a live birth. Numbers fewer than 5 are shown as "<5". Rates are not calculated (N/C) if number is fewer than five.

Source: California Department of Public Health, Center for Health Statistics, OHIR Vital Statistics Section, 2011.

California Department of Finance, "Race/Ethnic Population with Age and Sex Detail, 2000-2050", Sacramento, California, July 2007.

California Department of Finance, "Race/Ethnic Population with Age and Sex Detail, 2010-2060", Sacramento, California, January 2013.

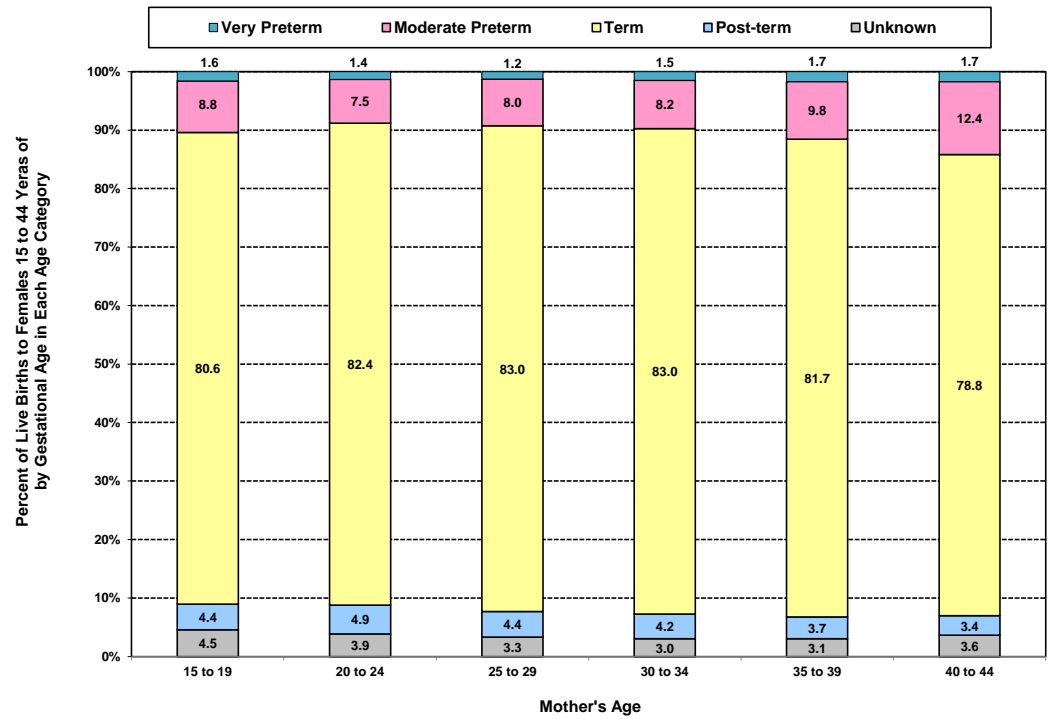
**Percent of Live Births to Mothers 15 to 44 of Age
by Source of Payment for Prenatal Care (PNC) and by Mother's Age
Los Angeles County, 2011**



Los Angeles County, 2011													
Mother's Age	Source of Payment for Prenatal Care												Total Live Births
	No Prenatal Care		Private Insurance		Other Government Programs		Medi-Cal		Self Pay		Other/Unknown		
	Number	Percent	Number	Percent	Number	Percent	Number	Percent	Number	Percent	Number	Percent	
15 to 19	69	0.7	1,526	14.7	287	2.8	8,224	79.4	150	1.4	103	1.0	10,359
20 to 24	116	0.4	5,331	20.5	660	2.5	19,340	74.4	301	1.2	253	1.0	26,001
25 to 29	98	0.3	12,429	37.9	525	1.6	18,314	55.8	905	2.8	537	1.6	32,808
30 to 34	70	0.2	18,373	53.6	397	1.2	13,325	38.8	1,357	4.0	782	2.3	34,304
35 to 39	39	0.2	11,826	57.2	195	0.9	7,287	35.2	829	4.0	510	2.5	20,686
40 to 44	8	0.1	3,262	58.8	38	0.7	1,906	34.3	198	3.6	140	2.5	5,552
Total	400	0.3	52,747	40.7	2,102	1.6	68,396	52.7	3,740	2.9	2,325	1.8	129,710

Note: Numbers fewer than 5 are shown as "<5". Rates are not calculated (N/C) if number is fewer than five.
Source: California Department of Public Health, Center for Health Statistics, OHIR Vital Statistics Section, 2011.

**Percent of Live Births to Mothers 15 to 44 Years of Age
by Gestational Age and by Mother's Age
Los Angeles County, 2011**



Los Angeles County, 2011											Total Live Births
Mother's Age	Gestational Age										
	Very Preterm		Moderate Preterm		Term		Post-Term		Gestational Age Unknown		
	<32 Weeks		32-36 weeks		37-41 weeks		42+ weeks				
	Number	Percent	Number	Percent	Number	Percent	Number	Percent	Number	Percent	
15 to 19	168	1.6	912	8.8	8,352	80.6	456	4.4	471	4.5	10,359
20 to 24	352	1.4	1,945	7.5	21,415	82.4	1,285	4.9	1,004	3.9	26,001
25 to 29	409	1.2	2,629	8.0	27,241	83.0	1,450	4.4	1,079	3.3	32,808
30 to 34	514	1.5	2,828	8.2	28,473	83.0	1,450	4.2	1,039	3.0	34,304
35 to 39	359	1.7	2,030	9.8	16,897	81.7	767	3.7	633	3.1	20,686
40 to 44	96	1.7	691	12.4	4,377	78.8	187	3.4	201	3.6	5,552
Total	1,898	1.5	11,035	8.5	106,755	82.3	5,595	4.3	4,427	3.4	129,710

Note: Unknown includes those weeks of gestation not stated, less than 17 weeks of gestation, and 53 weeks or more gestation. These categories reflect inaccuracies rather than actual gestation periods. Gestation is calculated from reported date of last menses.

Source: California Department of Public Health, Center for Health Statistics, OHIR Vital Statistics Section, 2011.