

Live Births

TITLE V INDICATOR TEMPLATE

INDICATOR: Crude Birth Rate

DEFINITION: The number of live births per 1,000 total population

NUMERATOR: The number of live births, by place of residence, in a calendar year

DENOMINATOR: The total population, by place of residence, in a calendar year

HEALTHY PEOPLE 2010 OBJECTIVE:
None

RISK FACTORS: Not applicable

Year	California				Los Angeles County			
	Total Live Births		95% Confidence Interval		Total Live Births		95% Confidence Interval	
	Number	Rate	Lower	Upper	Number	Rate	Lower	Upper
2000	531,285	15.6	15.5	15.6	157,391	16.4	16.4	16.5
2001	527,371	15.2	15.1	15.2	153,523	15.8	15.7	15.8
2002	529,245	15.0	14.9	15.0	151,167	15.3	15.2	15.3
2003	540,827	15.0	15.0	15.1	152,192	15.1	15.1	15.2
2004	544,685	14.9	14.9	15.0	151,504	14.9	14.8	15.0
2005	548,700	14.8	14.8	14.9	150,377	14.7	14.6	14.8
2006	562,157	15.0	15.0	15.1	151,837	14.8	14.7	14.9
2007	566,137	15.0	14.9	15.0	151,813	14.7	14.6	14.8
2008	551,567	14.4	14.4	14.4	147,684	14.2	14.1	14.3
2009	526,774	13.6	13.6	13.7	139,679	13.4	13.3	13.4

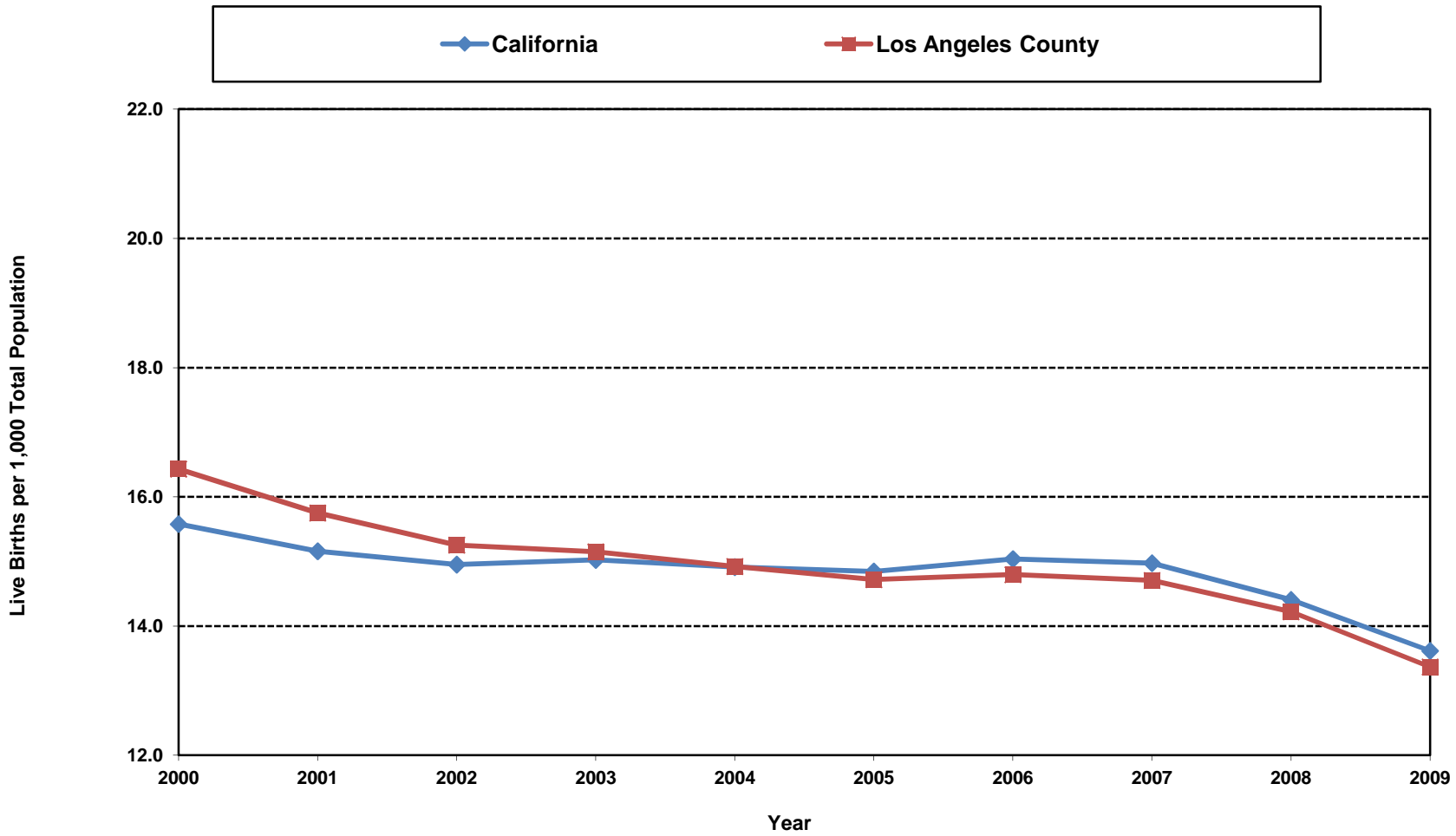
Denominator: Total Population		
Year	California	LA County
2000	34,105,437	9,578,960
2001	34,789,735	9,747,138
2002	35,397,005	9,910,245
2003	35,994,731	10,046,518
2004	36,525,947	10,152,410
2005	36,957,436	10,216,326
2006	37,380,870	10,262,451
2007	37,810,582	10,323,161
2008	38,288,706	10,385,372
2009	38,688,293	10,449,155

Sources: California Department of Public Health, Center for Health Statistics, OHIR Vital Statistics Section, 2000-2009.

Denominator data: California Department of Finance, "Race/Ethnic Population with Age and Sex Detail, 1990-1999", Sacramento, California, May, 2004.

Denominator data: California Department of Finance, "Race/Ethnic Population with Age and Sex Detail, 2000-2050", Sacramento, California, July 2007.

**Live Births per 1,000 Total Population
California vs. Los Angeles County, 2000-2009**



Sources: California Department of Public Health, Center for Health Statistics, OHIR Vital Statistics Section, 2000-2009.
Denominator data: California Department of Finance, "Race/Ethnic Population with Age and Sex Detail, 1990-1999", Sacramento, California, May, 2004.
Denominator data: California Department of Finance, "Race/Ethnic Population with Age and Sex Detail, 2000-2050", Sacramento, California, July 2007.

TITLE V INDICATOR TEMPLATE

INDICATOR: Percent of Total Live Births by Mother's Race/Ethnicity, 2008

DEFINITION: The percent of total live births for selected race/ethnic groups

NUMERATOR: Number of live births, by mother's race/ethnicity, by place of residence, in a calendar year

DENOMINATOR: Total number of live births, by place of residence, in a calendar year

HEALTHY PEOPLE 2010 OBJECTIVE:
None

RISK FACTORS: Not applicable

Mother's Race/Ethnicity	2009 California				2009 LA County			
	Live Births		95% Confidence Interval		Live Births		95% Confidence Interval	
	Number	Percent	Lower	Upper	Number	Percent	Lower	Upper
African American	28,611	5.4	5.4	5.5	10,589	7.6	7.4	7.7
Asian	62,854	11.9	11.8	12.0	15,729	11.3	11.1	11.4
Hispanic	269,953	51.2	51.1	51.4	86,642	62.0	61.8	62.3
Native American	1,987	0.4	0.4	0.4	202	0.1	0.1	0.2
Pacific Islander	2,397	0.5	0.4	0.5	450	0.3	0.3	0.4
White	141,193	26.8	26.7	26.9	23,150	16.6	16.4	16.8
Two or More Races	9,828	1.9	1.8	1.9	1,762	1.3	1.2	1.3
Other/Unknown	9,951	1.9	1.9	1.9	1,155	0.8	0.8	0.9
Total	526,774	100.0	100.0	100.0	139,679	100.0	100.0	100.0

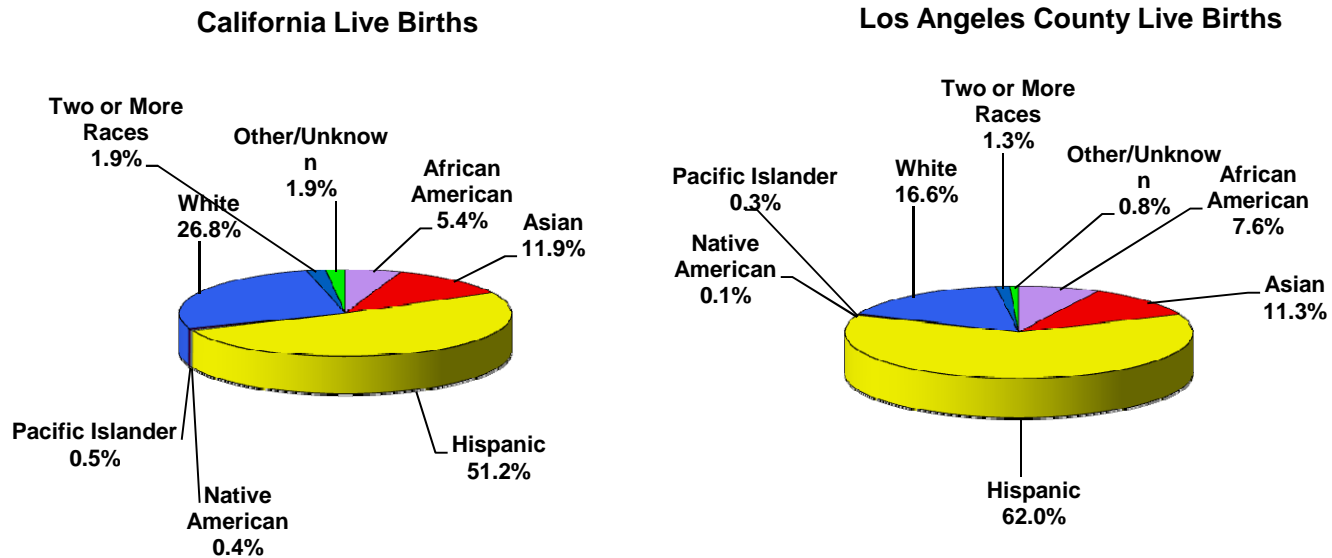
Denominator: Total Live Births 2009	
California	LA County
526,774	139,679
526,774	139,679
526,774	139,679
526,774	139,679
526,774	139,679
526,774	139,679
526,774	139,679
526,774	139,679
526,774	139,679
526,774	139,679

Note: Racial/ethnic categorization has been revised in this report; data from previous year reports may not be comparable.

Filipinos are included with Asians.

Source: California Department of Public Health, Center for Health Statistics, OHIR Vital Statistics Section, 2009.

**Percent of Total Live Births by Mother's Race/Ethnicity
California vs. Los Angeles County, 2009**



Note: Racial/ethnic categorization has been revised in this report; data from previous year reports may not be comparable. Filipinos are included with Asians.

Source: California Department of Public Health, Center for Health Statistics, OHIR Vital Statistics Section, 2009.

TITLE V INDICATOR TEMPLATE

INDICATOR: Percent of Total Live Births by Mother's Race/Ethnicity, 2000-2009

DEFINITION: The percent of total live births for selected race/ethnic groups over time

NUMERATOR: Number of live births, by mother's race/ethnicity, by place of residence, in a calendar year

DENOMINATOR: Total number of live births, by place of residence, in a calendar year

HEALTHY PEOPLE 2010 OBJECTIVE:

None

RISK FACTORS: Not applicable

California Live Births																	
Year	African American		Asian*		Hispanic		Native American		Pacific Islander		White		Two or More Races		Other/Unknown		Total Births
	Number	Percent	Number	Percent	Number	Percent	Number	Percent	Number	Percent	Number	Percent	Number	Percent	Number	Percent	Number
2000	32,302	6.1	58,876	11.1	257,958	48.6	1,975	0.4	2,376	0.4	168,233	31.7	6,254	1.2	3,311	0.6	531,285
2001	30,965	5.9	57,443	10.9	260,996	49.5	1,986	0.4	2,355	0.4	163,777	31.1	6,388	1.2	3,461	0.7	527,371
2002	29,807	5.6	59,376	11.2	263,023	49.7	1,966	0.4	2,411	0.5	161,470	30.5	6,813	1.3	4,379	0.8	529,245
2003	29,211	5.4	61,525	11.4	269,691	49.9	2,004	0.4	2,409	0.4	162,920	30.1	7,112	1.3	5,955	1.1	540,827
2004	28,679	5.3	62,122	11.4	275,188	50.5	2,073	0.4	2,543	0.5	158,992	29.2	7,162	1.3	7,926	1.5	544,685
2005	28,756	5.2	61,735	11.3	282,823	51.5	2,116	0.4	2,528	0.5	155,900	28.4	7,382	1.3	7,460	1.4	548,700
2006	30,016	5.3	62,949	11.2	293,276	52.2	2,136	0.4	2,523	0.4	154,227	27.4	8,219	1.5	8,811	1.6	562,157
2007	29,479	5.2	66,234	11.7	296,917	52.4	2,012	0.4	2,608	0.5	150,931	26.7	9,456	1.7	8,500	1.5	566,137
2008	29,428	5.3	64,825	11.8	287,323	52.1	2,032	0.4	2,481	0.4	146,309	26.5	9,875	1.8	9,294	1.7	551,567
2009	28,611	5.4	62,854	11.9	269,953	51.2	1,987	0.4	2,397	0.5	141,193	26.8	9,828	1.9	9,951	1.9	526,774

Note: Racial/ethnic categorization has been revised in this report; data from previous year reports may not be comparable.

* Filipinos are included with Asians.

Source: California Department of Public Health, Center for Health Statistics, OHIR Vital Statistics Section, 2000-2009.

TITLE V INDICATOR TEMPLATE

INDICATOR: Percent of Total Live Births by Mother's Race/Ethnicity, 2000-2009 (continued)

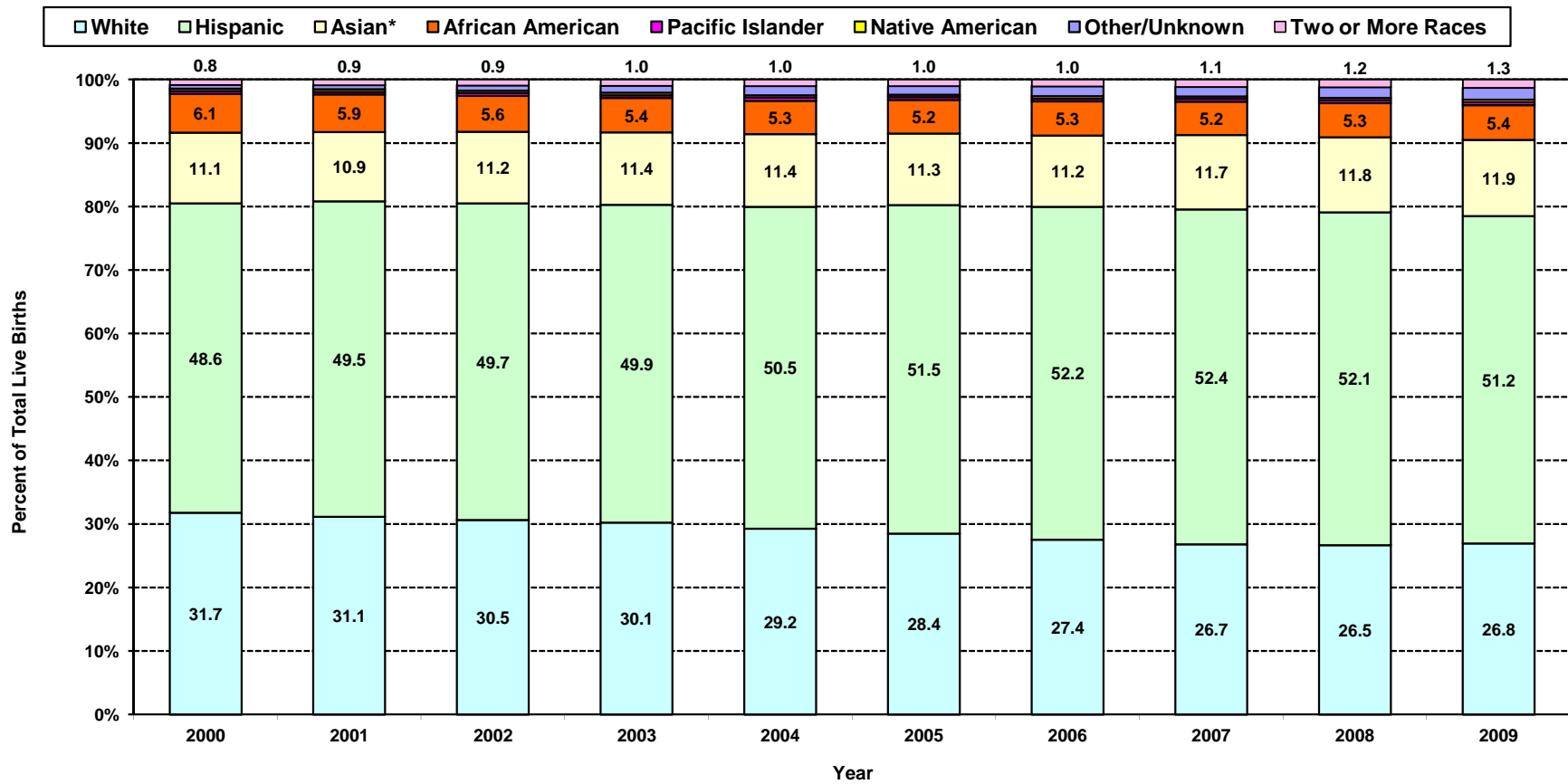
Los Angeles County Live Births																	
Year	African American		Asian*		Hispanic		Native American		Pacific Islander		White		Two or More Races		Other/Unknown		Total Births
	Number	Percent	Number	Percent	Number	Percent	Number	Percent	Number	Percent	Number	Percent	Number	Percent	Number	Percent	Number
2000	13,003	8.3	15,537	9.9	97,719	62.1	211	0.1	544	0.3	28,662	18.2	1,258	0.8	457	0.3	157,391
2001	12,175	7.9	14,696	9.6	96,288	62.7	219	0.1	527	0.3	27,708	18.0	1,322	0.9	588	0.4	153,523
2002	11,483	7.6	15,018	9.9	94,742	62.7	209	0.1	537	0.4	27,210	18.0	1,381	0.9	587	0.4	151,167
2003	11,296	7.4	15,412	10.1	95,070	62.5	177	0.1	510	0.3	27,589	18.1	1,474	1.0	664	0.4	152,192
2004	11,041	7.3	15,654	10.3	94,894	62.6	212	0.1	550	0.4	26,938	17.8	1,515	1.0	700	0.5	151,504
2005	10,931	7.3	15,460	10.3	94,780	63.0	189	0.1	538	0.4	26,100	17.4	1,506	1.0	873	0.6	150,377
2006	11,069	7.3	15,760	10.4	96,490	63.5	189	0.1	481	0.3	25,655	16.9	1,567	1.0	626	0.4	151,837
2007	10,858	7.2	16,789	11.1	95,686	63.0	191	0.1	493	0.3	25,137	16.6	1,717	1.1	942	0.6	151,813
2008	11,016	7.5	16,189	11.0	92,643	62.7	170	0.1	478	0.3	24,238	16.4	1,747	1.2	1,203	0.8	147,684
2009	10,589	7.6	15,729	11.3	86,642	62.0	202	0.1	450	0.3	23,150	16.6	1,762	1.3	1,155	0.8	139,679

Note: Racial/ethnic categorization has been revised in this report; data from previous year reports may not be comparable.

* Filipinos are included with Asians.

Source: California Department of Public Health, Center for Health Statistics, OHIR Vital Statistics Section, 2000-2009.

**Percent of Total Live Births by Mother's Race/Ethnicity
California, 2000-2009**

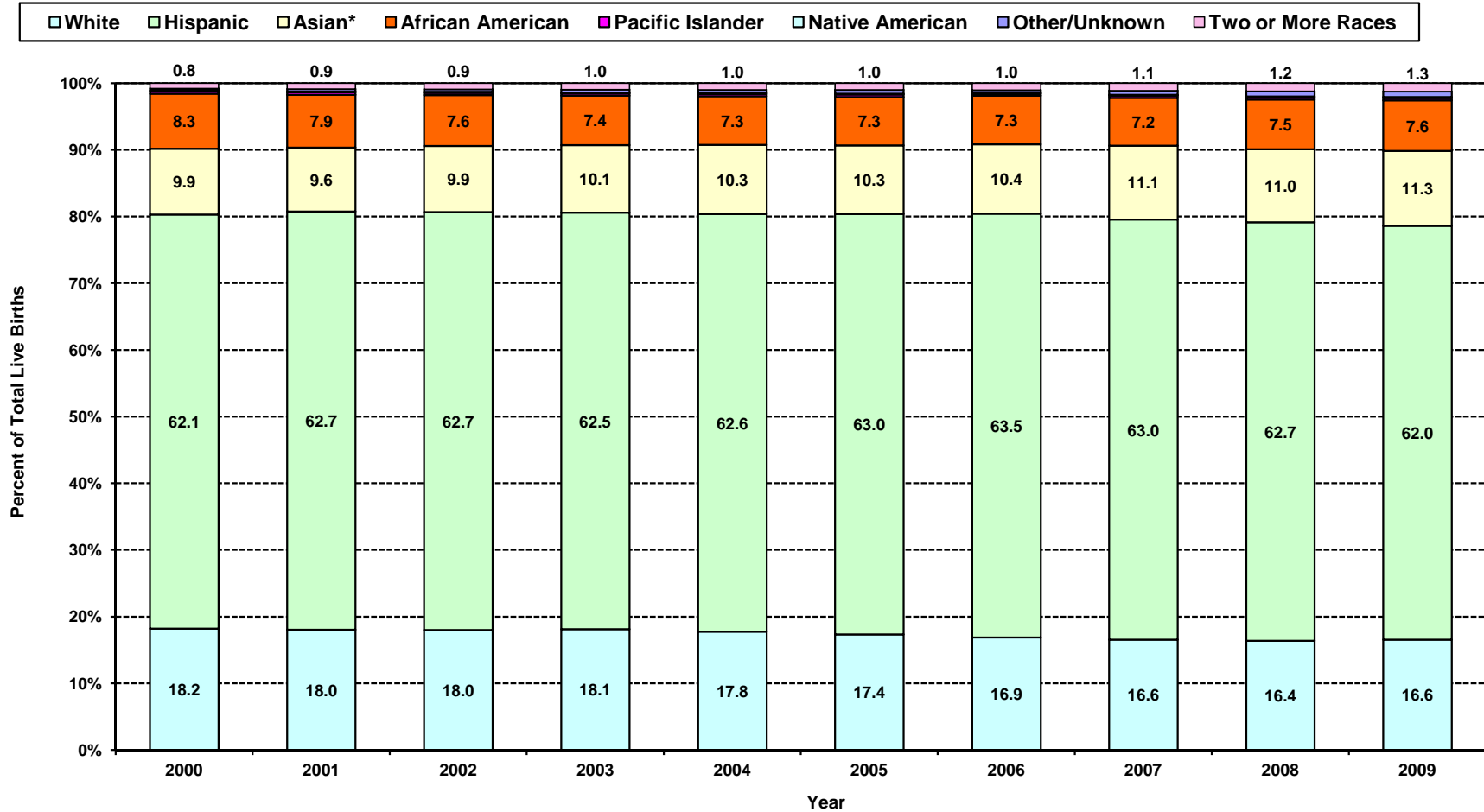


Note: Racial/ethnic categorization has been revised in this report; data from previous year reports may not be comparable.

* Filipinos are included with Asians.

Source: California Department of Public Health, Center for Health Statistics, OHIR Vital Statistics Section, 2000-2009.

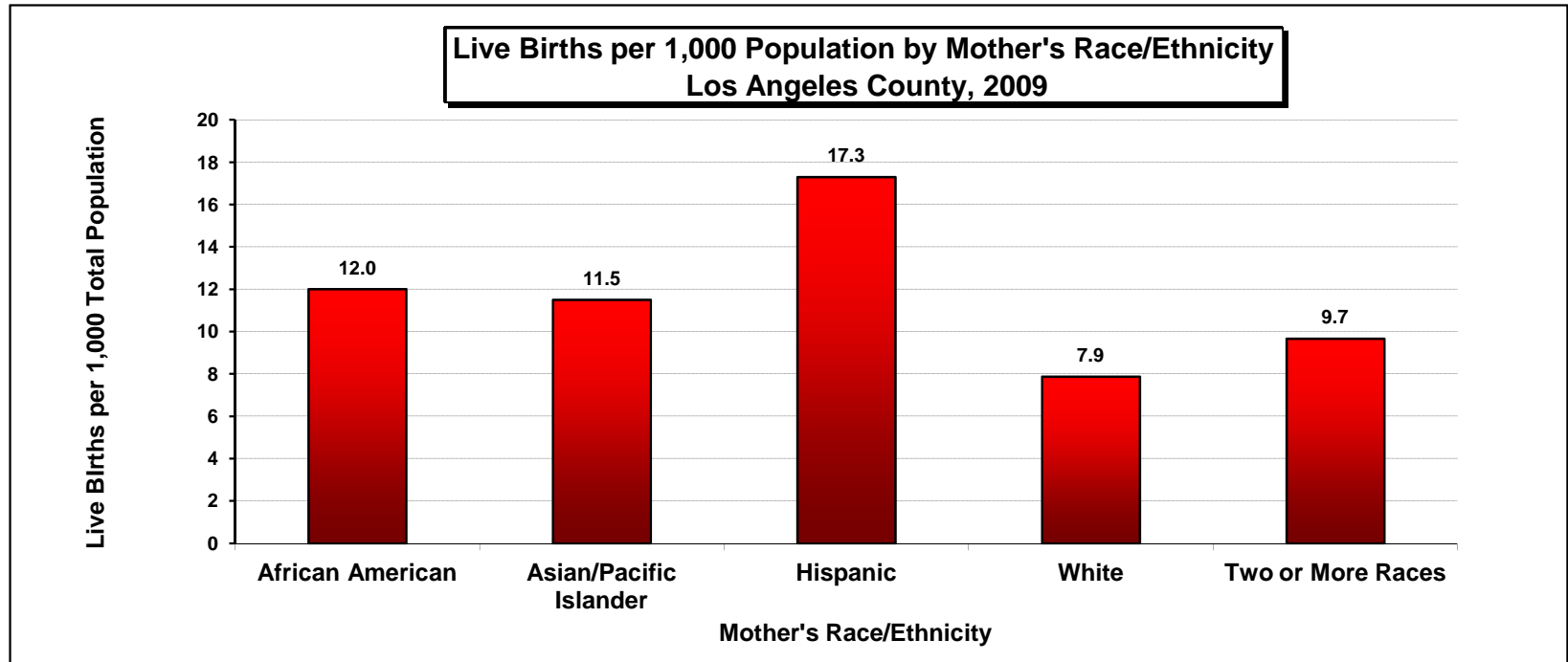
**Percent of Total Live Births by Mother's Race/Ethnicity
Los Angeles County, 2000-2009**



Note: Racial/ethnic categorization has been revised in this report; data from previous year reports may not be comparable.

* Filipinos are included with Asians.

Source: California Department of Public Health, Center for Health Statistics, OHIR Vital Statistics Section, 2000-2009.



Los Angeles County, 2009				
Mother's Race/Ethnicity	Live Births		95% Confidence Interval	
	Number	Rate	Lower	Upper
African American	10,589	12.0	11.8	12.2
Asian/Pacific Islander	16,179	11.5	11.3	11.7
Hispanic	86,642	17.3	17.2	17.4
Native American	202	6.6	5.7	7.5
White	23,150	7.9	7.8	8.0
Two or More Races	1,762	9.7	9.2	10.1
Other/Unknown	1,155	N/C	N/C	N/C
Total	139,679	13.4	13.3	13.4

Total Population
882,167
1,407,339
5,008,069
30,808
2,938,369
182,403
N/A
10,449,155

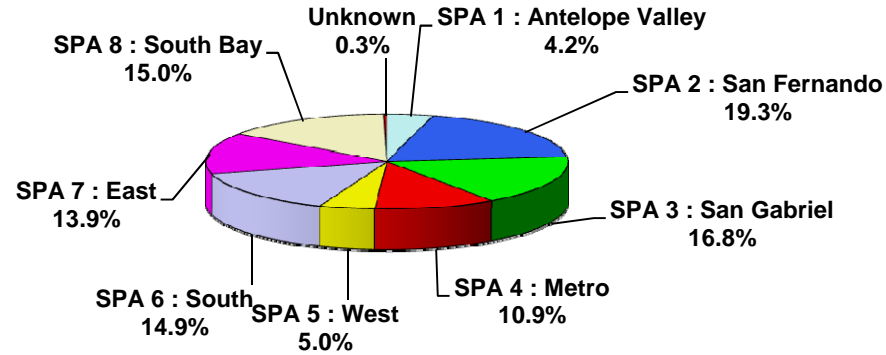
Note: Racial/ethnic categorization has been revised in this report; data from previous year reports may not be comparable.

N/A=Not Available; N/C=Not Calculated

Source: California Department of Public Health, Center for Health Statistics, OHIR Vital Statistics Section, 2009.

Denominator data: California Department of Finance, "Race/Ethnic Population with Age and Sex Detail, 2000-2050", Sacramento, California, July 2007.

**Percent of Total Live Births by Service Planning Area (SPA)
Los Angeles County, 2009**

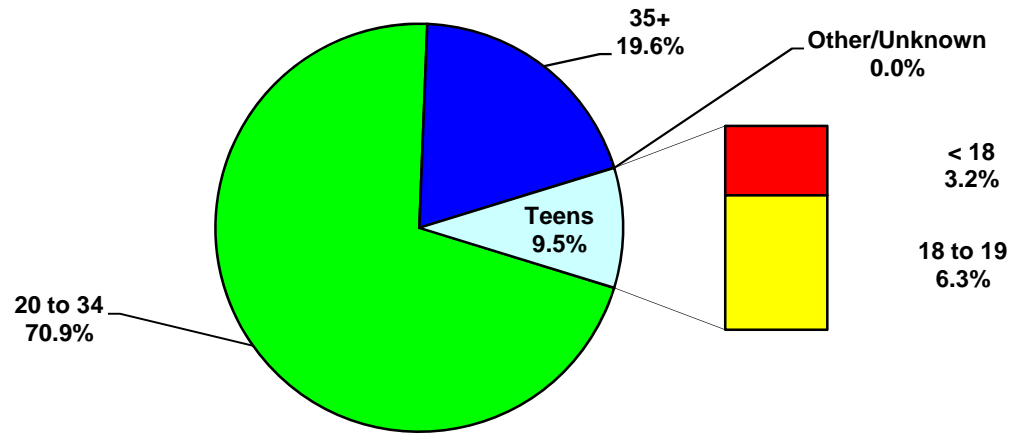


Los Angeles County, 2009				
Service Planning Area (SPA)	Live Births		95% Confidence Interval	
	Number	Percent	Lower	Upper
SPA 1 : Antelope Valley	5,820	4.2	4.1	4.3
SPA 2 : San Fernando	26,896	19.3	19.0	19.5
SPA 3 : San Gabriel	23,469	16.8	16.6	17.0
SPA 4 : Metro	15,167	10.9	10.7	11.0
SPA 5 : West	6,915	5.0	4.8	5.1
SPA 6 : South	20,743	14.9	14.7	15.0
SPA 7 : East	19,390	13.9	13.7	14.1
SPA 8 : South Bay	20,911	15.0	14.8	15.2
Unknown	368	0.3	0.2	0.3
Total	139,679	100.0	100.0	100.0

Note: The mothers' residential zip codes were used to allocate live births to corresponding SPA. SPA corresponding to each zip code (published in 2003) were designated using the zip code centroids. Published statistics based on other corresponding tables may vary when compared. Records that cannot be assigned to any SPA are classified as 'Unknown'.

Source: California Department of Public Health, Center for Health Statistics, OHIR Vital Statistics Section, 2009.

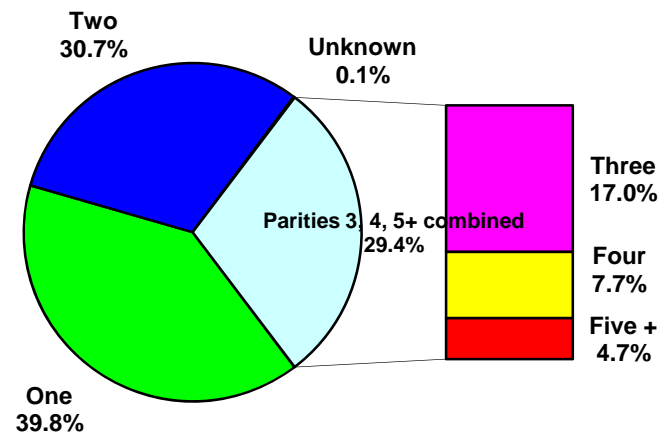
**Percent of Total Live Births by Mother's Age
Los Angeles County, 2009**



Los Angeles County, 2009				
Mother's Age	Live Births		95% Confidence Interval	
	Number	Percent	Lower	Upper
< 18	4,539	3.2	3.2	3.3
18 to 19	8,739	6.3	6.1	6.4
20 to 34	98,993	70.9	70.6	71.1
35+	27,396	19.6	19.4	19.8
Other/Unknown	12	0.01	0.00	0.01
Total	139,679	100.0	100.0	100.0

Source: California Department of Public Health, Center for Health Statistics, OHIR Vital Statistics Section, 2009.

**Percent of Total Live Births by Parity
Los Angeles County, 2009**

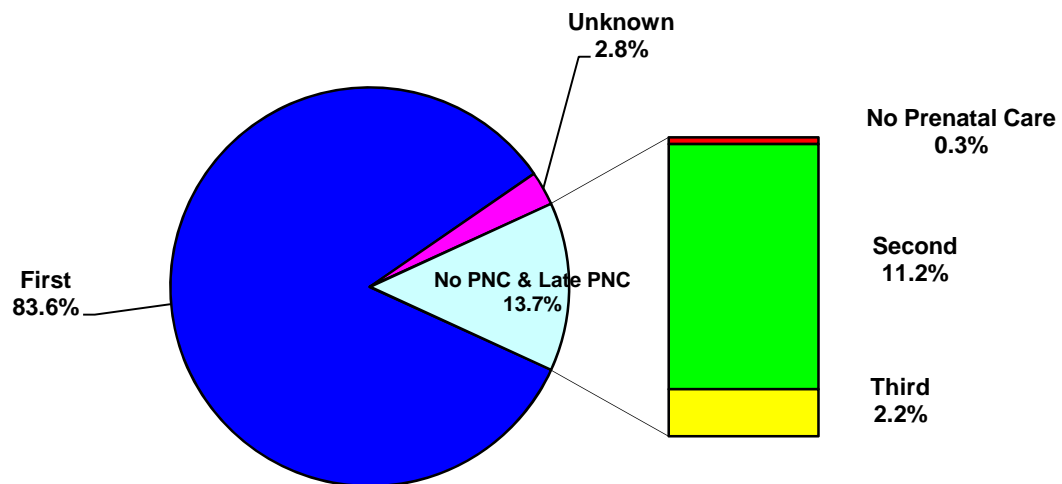


Los Angeles County, 2009				
Parity	Live Births		95% Confidence Interval	
	Number	Percent	Lower	Upper
1	55,574	39.8	39.5	40.0
2	42,906	30.7	30.5	31.0
3	23,724	17.0	16.8	17.2
4	10,720	7.7	7.5	7.8
5+	6,610	4.7	4.6	4.8
Unknown	145	0.1	0.1	0.1
Total	139,679	100.0	100.0	100.0

Note: Parity = number of pregnancies resulting in live births to a woman.

Source: California Department of Public Health, Center for Health Statistics, OHIR Vital Statistics Section, 2009.

**Percent of Total Live Births by Mother's Trimester Prenatal Care (PNC) Began
Los Angeles County, 2009**



Los Angeles County, 2009				
Mother's Trimester Prenatal Care Began	Live Births		95% Confidence Interval	
	Number	Percent	Lower	Upper
No Prenatal Care	440	0.3	0.3	0.3
First	116,717	83.6	83.4	83.8
Second	15,666	11.2	11.1	11.4
Third	3,014	2.2	2.1	2.2
Unknown	3,842	2.8	2.7	2.8
Total	139,679	100.0	100.0	100.0

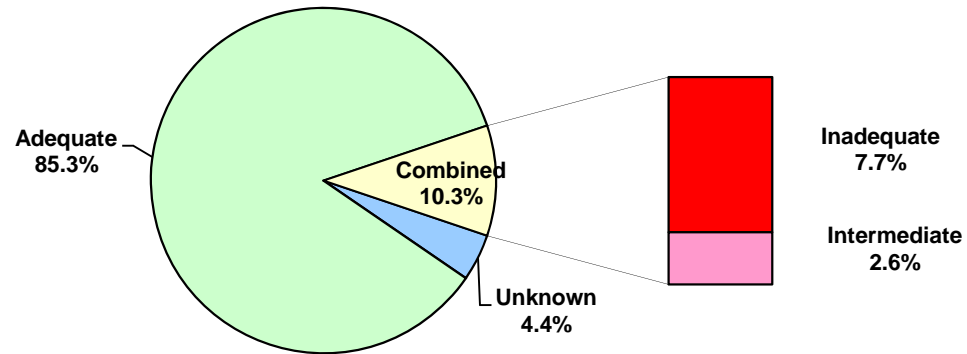
Year 2010 Objective: Increase the proportion of pregnant women who receive prenatal care in the first trimester of pregnancy to 90 percent of live births.

Year 2020 Objective: Increase the proportion of pregnant women who receive prenatal care in the first trimester of pregnancy to 77.6 percent of live births.

Note: "Trimester Prenatal Care (PNC) Began" excludes the prenatal care experiences of all women whose pregnancies did not result in a live birth.

Source: California Department of Public Health, Center for Health Statistics, OHIR Vital Statistics Section, 2009.

**Percent of Total Live Births by Adequacy of Prenatal Care Utilization Index
Los Angeles County, 2009**



Los Angeles County, 2009				
Adequacy of Prenatal Care Utilization Index	Live Births		95% Confidence Interval	
	Number	Percent	Lower	Upper
Adequate	119,111	85.3	85.1	85.5
Intermediate	3,636	2.6	2.5	2.7
Inadequate	10,806	7.7	7.6	7.9
Unknown	6,126	4.4	4.3	4.5
Total	139,679	100.0	100.0	100.0

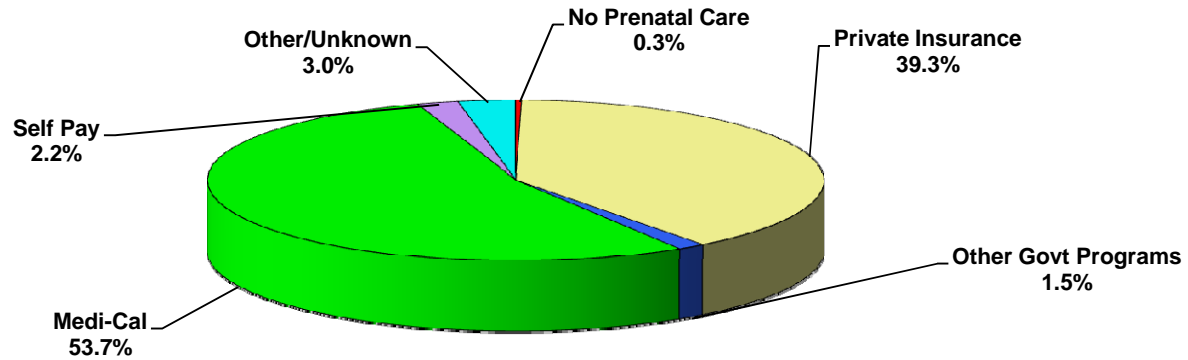
Year 2010 Objective: Increase the proportion of pregnant women who receive early and adequate prenatal care to 90 percent of live births.

Year 2020 Objective: Increase the proportion of pregnant women who receive early and adequate prenatal care to 77.6 percent of live births.

Note: The APNCU Index measures prenatal care utilization, which includes consideration of the month prenatal care began and the number of prenatal care visits during the time mothers actually received prenatal care. This utilization index is based on the recommendations established by the American College of Obstetrics and Gynecologists (ACOG). Appendix A contains the specific criteria for timing and number of prenatal care visits that are used to assign adequacy categories.

Source: California Department of Public Health, Center for Health Statistics, OHIR Vital Statistics Section, 2009.

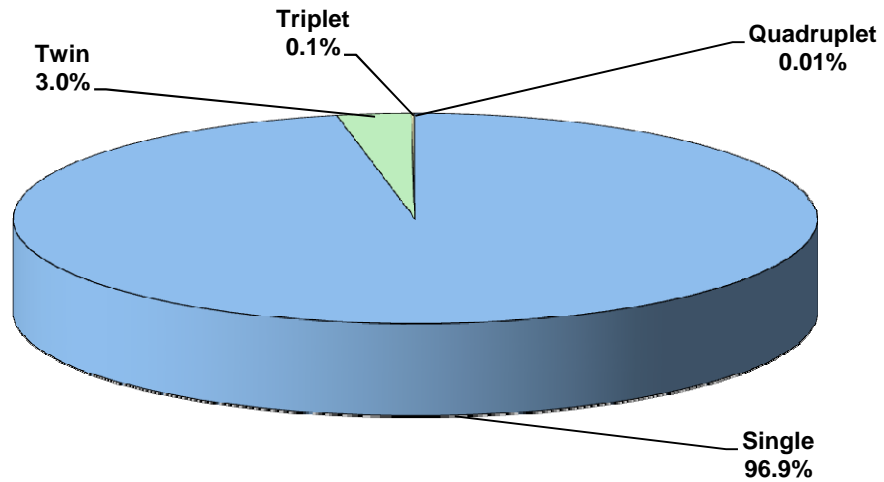
**Percent of Total Live Births by Source of Payment for Prenatal Care (PNC)
Los Angeles County, 2009**



Los Angeles County, 2009				
Source of Payment for Prenatal Care	Live Births		95% Confidence Interval	
	Number	Percent	Lower	Upper
No Prenatal Care	440	0.3	0.3	0.3
Private Insurance	54,949	39.3	39.1	39.6
Other Govt Programs	2,034	1.5	1.4	1.5
Medi-Cal	75,061	53.7	53.5	54.0
Self Pay	3,012	2.2	2.1	2.2
Other/Unknown	4,183	3.0	2.9	3.1
Total	139,679	100.0	100.0	100.0

Source: California Department of Public Health, Center for Health Statistics, OHIR Vital Statistics Section, 2009.

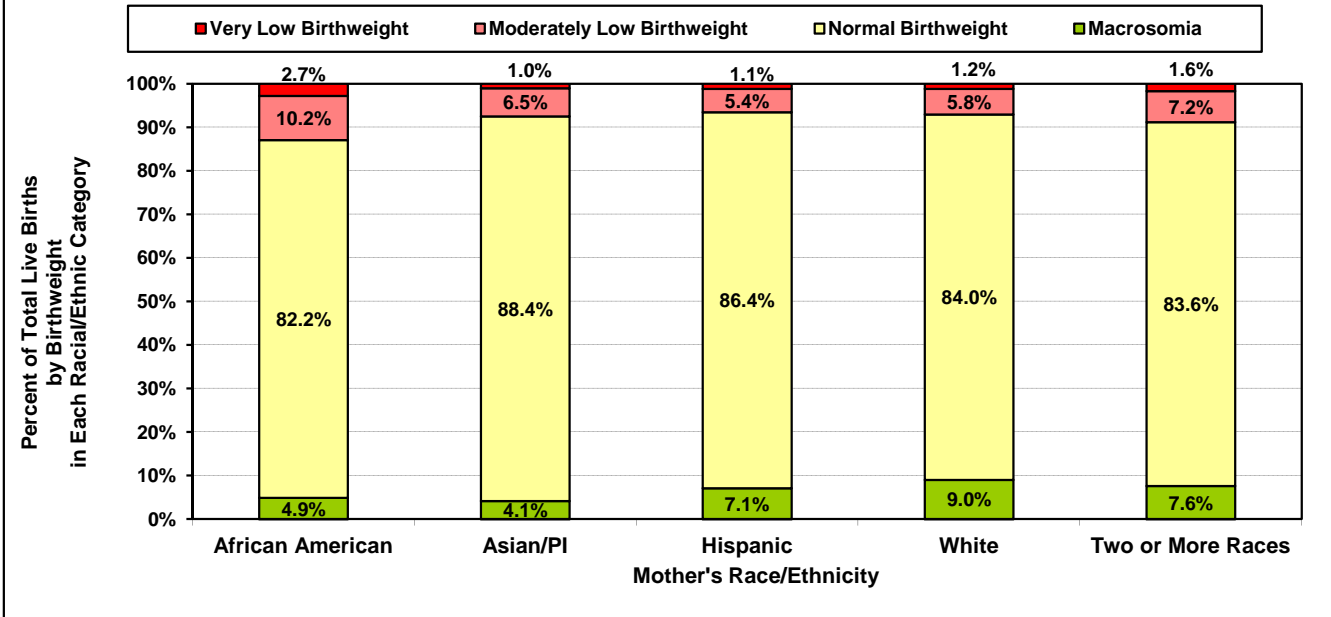
**Percent of Total Live Births by Type of Birth
Los Angeles County, 2009**



Los Angeles County, 2009				
Birth Type	Live Births		95% Confidence Interval	
	Number	Percent	Lower	Upper
Single	135,329	96.9	96.8	97.0
Twin	4,165	3.0	2.9	3.1
Triplet	165	0.1	0.1	0.1
Quadruplet	11	0.01	0.00	0.01
Total	139,679	100.0	100.0	100.0

Source: California Department of Public Health, Center for Health Statistics, OHIR Vital Statistics Section, 2009.

**Percent of Total Live Births
by Birthweight and by Mother's Race/Ethnicity
Los Angeles County, 2009**

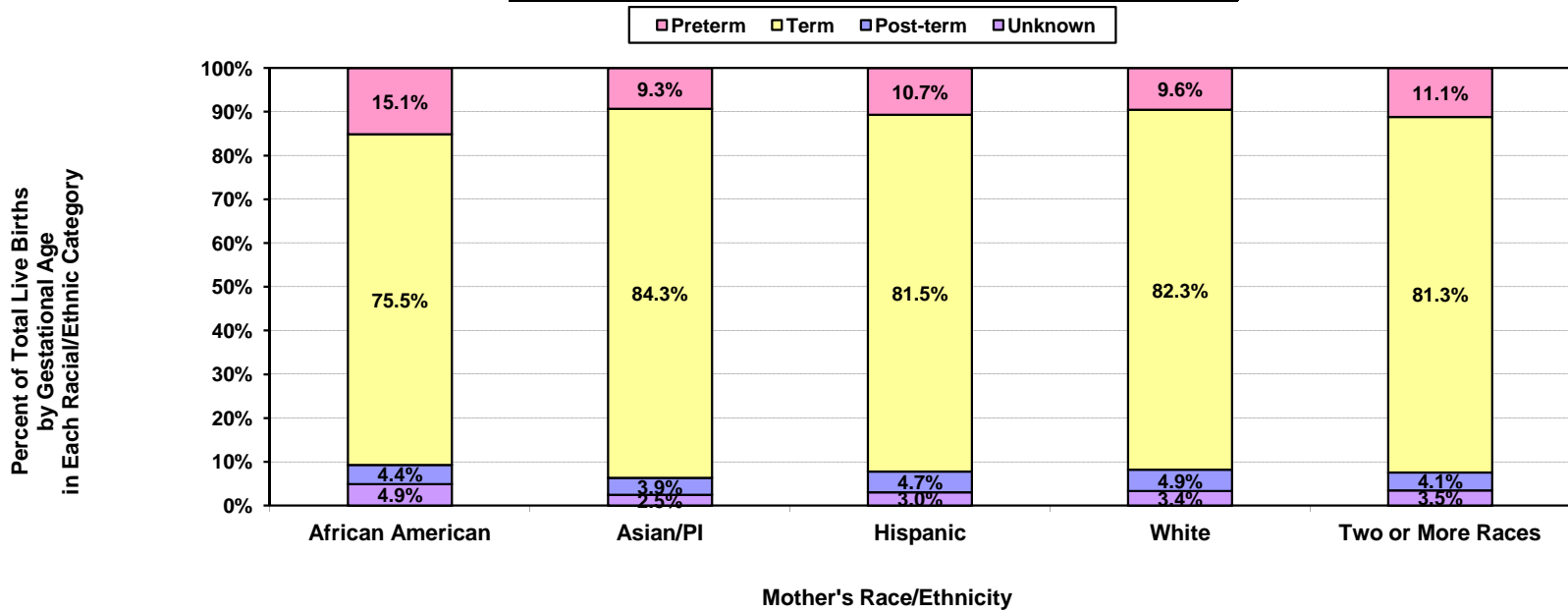


Los Angeles County, 2009									
Mother's Race/Ethnicity	Very Low Birthweight		Moderately Low Birthweight		Normal Birthweight		Macrosomia		Total Live Births
	0 to 1,499 grams		1,500 to 2,499 grams		2,500 to 3,999 grams		4,000+ grams		
	Number	Percent	Number	Percent	Number	Percent	Number	Percent	
African American	290	2.7	1,076	10.2	8,709	82.2	514	4.9	10,589
Asian/PI	157	1.0	1,056	6.5	14,297	88.4	669	4.1	16,179
Hispanic	977	1.1	4,671	5.4	74,822	86.4	6,172	7.1	86,642
Native American	<5	N/C	14	6.9	168	83.2	18	8.9	202
White	272	1.2	1,350	5.8	19,439	84.0	2,089	9.0	23,150
Two or More Races	29	1.6	126	7.2	1,473	83.6	134	7.6	1,762
Other/Unknown	24	2.1	95	8.2	944	81.7	92	8.0	1,155
Total	1,751	1.3	8,388	6.0	119,852	85.8	9,688	6.9	139,679

Note: Racial/ethnic categorization has been revised in this report; data from previous year reports may not be comparable. Numbers fewer than 5 are shown as "<5". Rates are not calculated (N/C) if number is fewer than five.

Source: California Department of Public Health, Center for Health Statistics, OHIR Vital Statistics Section, 2009.

**Percent of Total Live Births
by Gestational Age and by Mother's Race/Ethnicity
Los Angeles County, 2009**



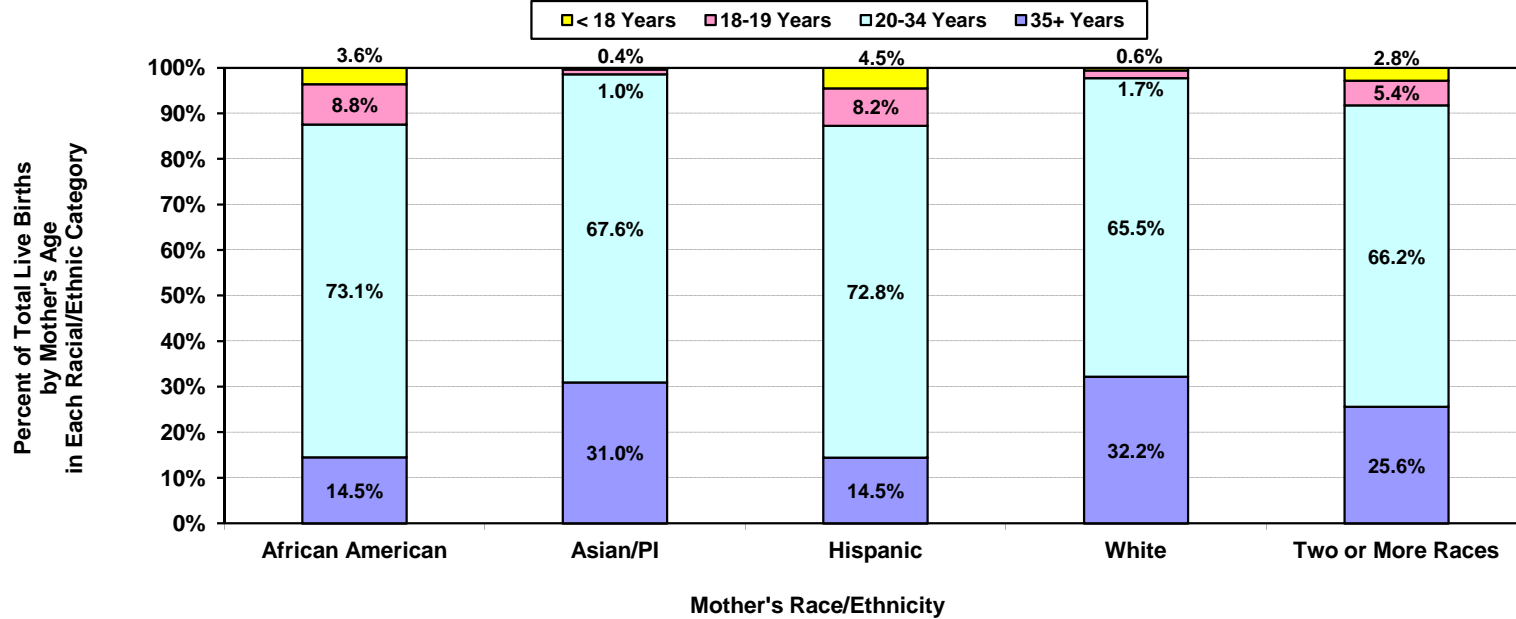
Los Angeles County, 2009											
Mother's Race/Ethnicity	Very Preterm		Moderately Preterm		Term		Post-term		Gestational Age Unknown		Total Live Births
	< 32 weeks		32-36 weeks		37-41 weeks		42+ weeks				
	Number	Percent	Number	Percent	Number	Percent	Number	Percent	Number	Percent	
African American	322	3.0	1,280	12.1	7,999	75.5	465	4.4	523	4.9	10,589
Asian/PI	177	1.1	1,331	8.2	13,638	84.3	634	3.9	399	2.5	16,179
Hispanic	1,273	1.5	7,982	9.2	70,649	81.5	4,097	4.7	2,641	3.0	86,642
Native American	5	2.5	20	9.9	152	75.2	13	6.4	12	5.9	202
White	314	1.4	1,885	8.1	19,049	82.3	1,123	4.9	779	3.4	23,150
Two or More Races	29	1.6	167	9.5	1,432	81.3	72	4.1	62	3.5	1,762
Other/Unknown	24	2.1	105	9.1	891	77.1	47	4.1	88	7.6	1,155
Total	2,144	1.5	12,770	9.1	113,810	81.5	6,451	4.6	4,504	3.2	139,679

Note: Unknown includes those weeks of gestation not stated, less than 17 weeks of gestation, and 53 weeks or more gestation. These categories reflect inaccuracies rather than actual gestation periods. Gestation is calculated from reported date of last menses.

Racial/ethnic categorization has been revised in this report; data from previous year reports may not be comparable.

Source: California Department of Public Health, Center for Health Statistics, OHIR Vital Statistics Section, 2009.

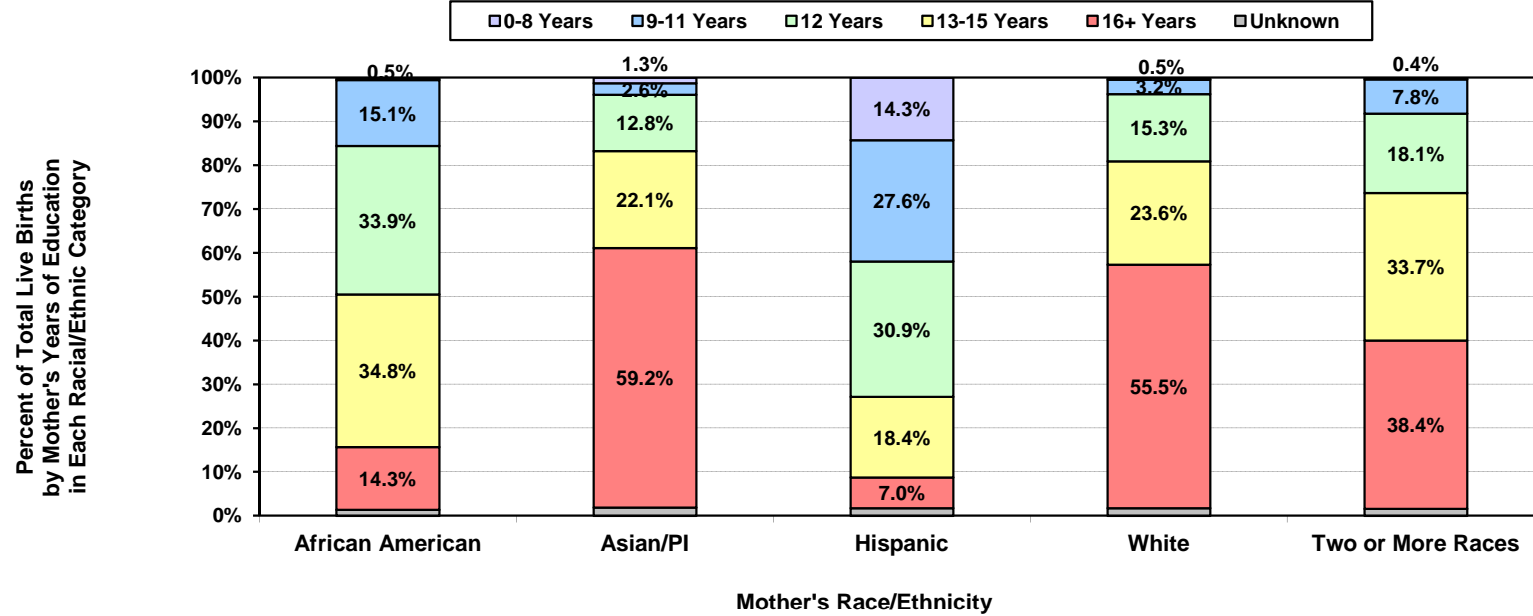
**Percent of Total Live Births
by Mother's Age and by Mother's Race/Ethnicity
Los Angeles County, 2009**



Los Angeles County, 2009											Total Live Births
Mother's Race/Ethnicity	Mother's Age										
	< 18		18 - 19		20 - 34		35+		Unknown		
	Number	Percent	Number	Percent	Number	Percent	Number	Percent	Number	Percent	
African American	382	3.6	932	8.8	7,738	73.1	1,537	14.5	<5	N/C	10,589
Asian/PI	61	0.4	166	1.0	10,941	67.6	5,011	31.0	<5	N/C	16,179
Hispanic	3,900	4.5	7,104	8.2	63,105	72.8	12,532	14.5	<5	N/C	86,642
Native American	6	3.0	12	5.9	156	77.2	28	13.9	<5	N/C	202
White	130	0.6	392	1.7	15,164	65.5	7,463	32.2	<5	N/C	23,150
Two or More Races	49	2.8	96	5.4	1,166	66.2	451	25.6	<5	N/C	1,762
Other/Unknown	11	1.0	37	3.2	723	62.6	374	32.4	10	0.9	1,155
Total	4,539	3.2	8,739	6.3	98,993	70.9	27,396	19.6	12	0.0	139,679

Note: Racial/ethnic categorization has been revised in this report; data from previous year reports may not be comparable.
 Numbers fewer than 5 are shown as "<5". Rates are not calculated (N/C) if number is fewer than five.
 Source: California Department of Public Health, Center for Health Statistics, OHIR Vital Statistics Section, 2009.

**Percent of Total Live Births
by Mother's Years of Education and by Mother's Race/Ethnicity
Los Angeles County, 2009**



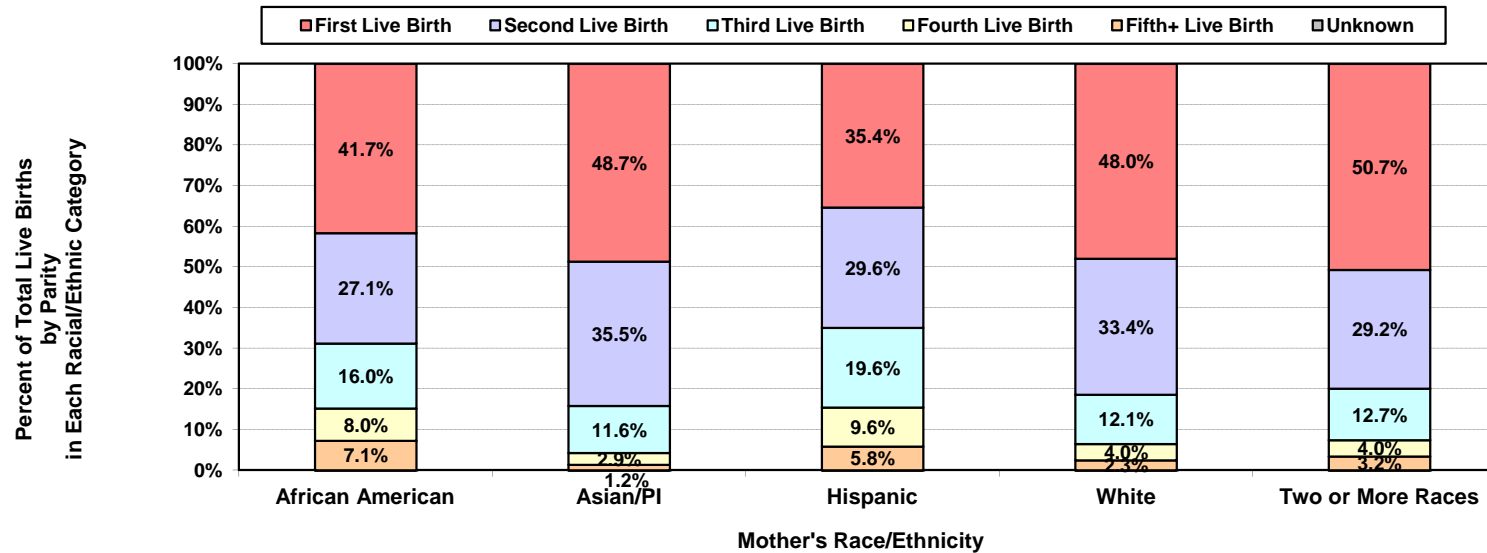
Los Angeles County, 2009													Total Live Births
Mother's Race/Ethnicity	Mother's Years of Education												
	0 to 8		9 to 11		12		13 to 15		16+		Unknown		
	Number	Percent	Number	Percent	Number	Percent	Number	Percent	Number	Percent	Number	Percent	
African American	55	0.5	1,596	15.1	3,587	33.9	3,690	34.8	1,515	14.3	146	1.4	10,589
Asian/PI	209	1.3	420	2.6	2,075	12.8	3,580	22.1	9,584	59.2	311	1.9	16,179
Hispanic	12,372	14.3	23,954	27.6	26,782	30.9	15,954	18.4	6,048	7.0	1,532	1.8	86,642
Native American	<5	N/C	37	18.3	50	24.8	56	27.7	49	24.3	8	4.0	202
White	109	0.5	752	3.2	3,550	15.3	5,473	23.6	12,858	55.5	408	1.8	23,150
Two or More Races	7	0.4	138	7.8	319	18.1	593	33.7	677	38.4	28	1.6	1,762
Other/Unknown	11	1.0	23	2.0	79	6.8	99	8.6	154	13.3	789	68.3	1,155
Total	12,765	9.1	26,920	19.3	36,442	26.1	29,445	21.1	30,885	22.1	3,222	2.3	139,679

Note: Racial/ethnic categorization has been revised in this report; data from previous year reports may not be comparable.

Numbers fewer than 5 are shown as "<5". Rates are not calculated (N/C) if number is fewer than five.

Source: California Department of Public Health, Center for Health Statistics, OHIR Vital Statistics Section, 2009.

Percent of Total Live Births by Parity and by Mother's Race/Ethnicity Los Angeles County, 2009



Los Angeles County, 2009													Total Live Births
Mother's Race/Ethnicity	Parity												
	First Live Birth		Second Live Birth		Third Live Birth		Fourth Live Birth		Fifth+ Live Birth		Unknown		
	Number	Percent	Number	Percent	Number	Percent	Number	Percent	Number	Percent	Number	Percent	
African American	4,416	41.7	2,871	27.1	1,692	16.0	847	8.0	749	7.1	14	0.1	10,589
Asian/PI	7,873	48.7	5,743	35.5	1,876	11.6	472	2.9	202	1.2	13	0.1	16,179
Hispanic	30,653	35.4	25,667	29.6	16,970	19.6	8,318	9.6	5,004	5.8	30	0.0	86,642
Native American	80	39.6	48	23.8	38	18.8	20	9.9	16	7.9	<5	N/C	202
White	11,105	48.0	7,740	33.4	2,804	12.1	930	4.0	527	2.3	44	0.2	23,150
Two or More Races	894	50.7	514	29.2	224	12.7	70	4.0	57	3.2	<5	N/C	1,762
Other/Unknown	553	47.9	323	28.0	120	10.4	63	5.5	55	4.8	41	3.5	1,155
Total	55,574	39.8	42,906	30.7	23,724	17.0	10,720	7.7	6,610	4.7	145	0.1	139,679

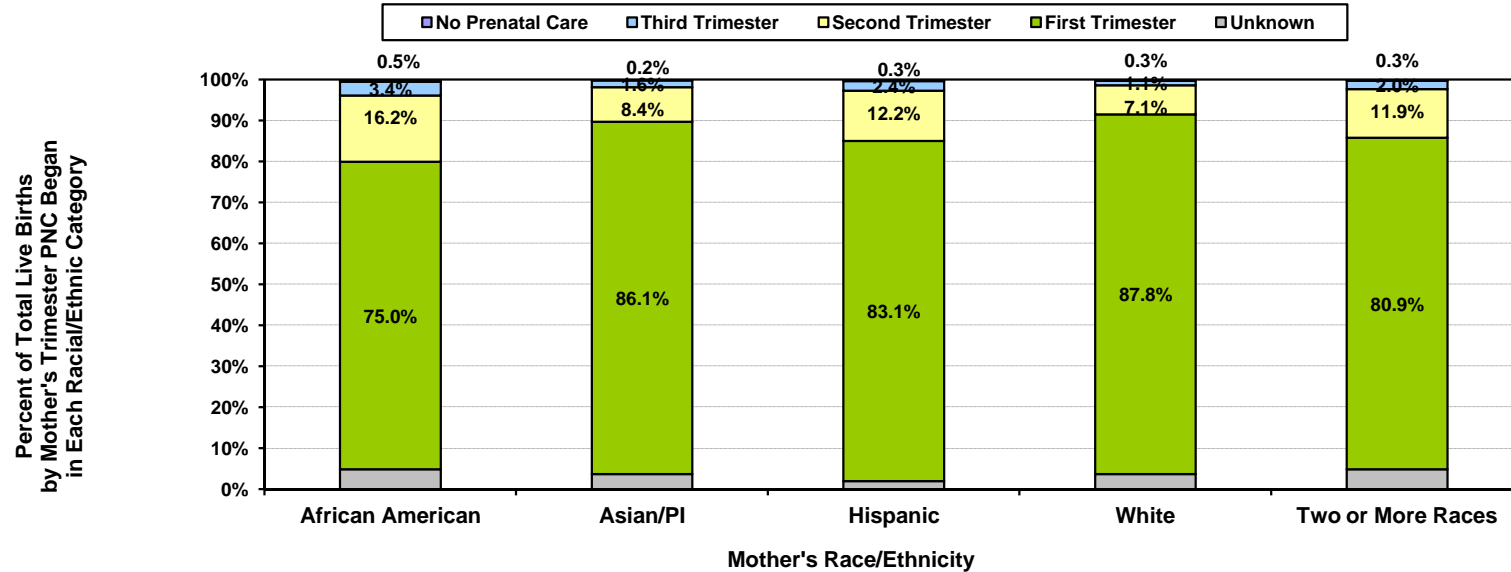
Note: Parity = number of pregnancies resulting in live births to a woman.

Racial/ethnic categorization has been revised in this report; data from previous year reports may not be comparable.

Numbers fewer than 5 are shown as "<5". Rates are not calculated (N/C) if number is fewer than five.

Source: California Department of Public Health, Center for Health Statistics, OHIR Vital Statistics Section, 2009.

**Percent of Total Live Births
by Mother's Trimester Prenatal Care (PNC) Began and by Mother's Race/Ethnicity
Los Angeles County, 2009**



Los Angeles County, 2009											
Mother's Race/Ethnicity	No Prenatal Care		Mother's Trimester Prenatal Care Began						Unknown		Total Live Births
	Number	Percent	First		Second		Third		Number	Percent	
			Number	Percent	Number	Percent	Number	Percent			
African American	53	0.5	7,946	75.0	1,716	16.2	357	3.4	517	4.9	10,589
Asian/PI	32	0.2	13,930	86.1	1,365	8.4	259	1.6	593	3.7	16,179
Hispanic	276	0.3	72,041	83.1	10,580	12.2	2,076	2.4	1,669	1.9	86,642
Native American	<5	N/C	150	74.3	35	17.3	8	4.0	8	4.0	202
White	66	0.3	20,337	87.8	1,640	7.1	249	1.1	858	3.7	23,150
Two or More Races	5	0.3	1,426	80.9	210	11.9	35	2.0	86	4.9	1,762
Other/Unknown	7	0.6	887	76.8	120	10.4	30	2.6	111	9.6	1,155
Total	440	0.3	116,717	83.6	15,666	11.2	3,014	2.2	3,842	2.8	139,679

Year 2010 Objective: Increase the proportion of pregnant women who receive prenatal care in the first trimester of pregnancy to 90 percent of live births.

Year 2020 Objective: Increase the proportion of pregnant women who receive prenatal care in the first trimester of pregnancy to 77.6 percent of live births.

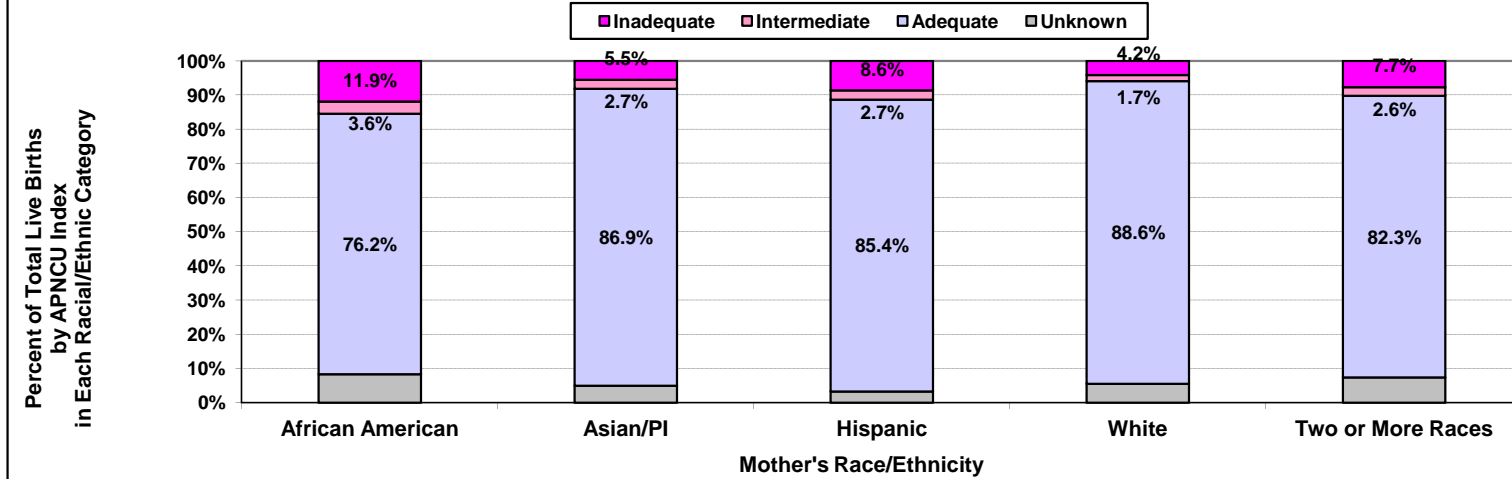
Note: "Trimester Prenatal Care (PNC) Began" excludes the prenatal care experiences of all women whose pregnancies did not result in a live birth.

Racial/ethnic categorization has been revised in this report; data from previous year reports may not be comparable.

Numbers fewer than 5 are shown as "<5". Rates are not calculated (N/C) if number is fewer than five.

Source: California Department of Public Health, Center for Health Statistics, OHIR Vital Statistics Section, 2009.

**Percent of Total Live Births
by Adequacy of Prenatal Care Utilization Index and by Mother's Race/Ethnicity
Los Angeles County, 2009**



Los Angeles County, 2009									Total Live Births
Mother's Race/Ethnicity	Adequacy of Prenatal Care Utilization Index								
	Adequate		Intermediate		Inadequate		Unknown		
	Number	Percent	Number	Percent	Number	Percent	Number	Percent	
African American	8,066	76.2	384	3.6	1,256	11.9	883	8.3	10,589
Asian/PI	14,053	86.9	433	2.7	888	5.5	805	5.0	16,179
Hispanic	73,988	85.4	2,345	2.7	7,448	8.6	2,861	3.3	86,642
Native American	154	76.2	9	4.5	26	12.9	13	6.4	202
White	20,507	88.6	395	1.7	963	4.2	1,285	5.6	23,150
Two or More Races	1,451	82.3	45	2.6	135	7.7	131	7.4	1,762
Other/Unknown	892	77.2	25	2.2	90	7.8	148	12.8	1,155
Total	119,111	85.3	3,636	2.6	10,806	7.7	6,126	4.4	139,679

Year 2010 Objective: Increase the proportion of pregnant women who receive early and adequate prenatal care to 90 percent of live births.

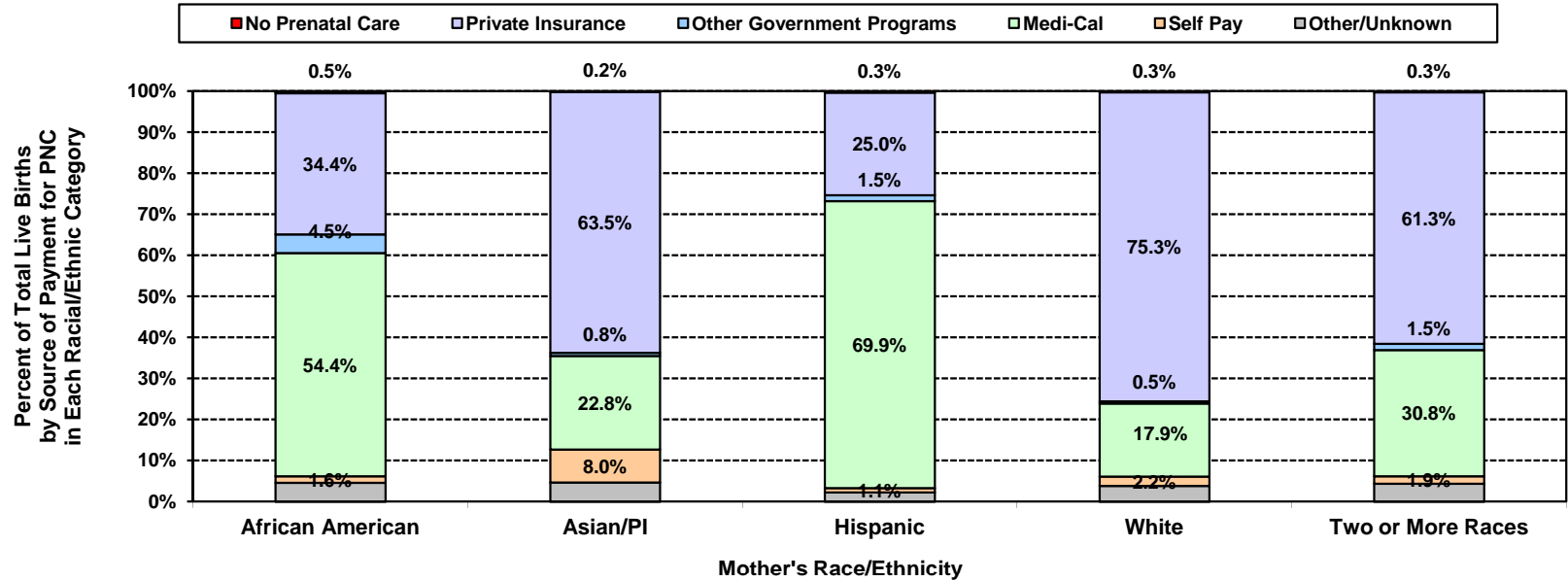
Year 2020 Objective: Increase the proportion of pregnant women who receive early and adequate prenatal care to 77.6 percent of live births.

Note: The APNCU Index measures prenatal care utilization, which includes consideration of the month prenatal care began and the number of prenatal care visits during the time mothers actually received prenatal care. This utilization index is based on the recommendations established by the American College of Obstetrics and Gynecologists (ACOG). Appendix A contains the specific criteria for timing and number of prenatal care visits that are used to assign adequacy categories.

Racial/ethnic categorization has been revised in this report; data from previous year reports may not be comparable.

Source: California Department of Public Health, Center for Health Statistics, OHIR Vital Statistics Section, 2009.

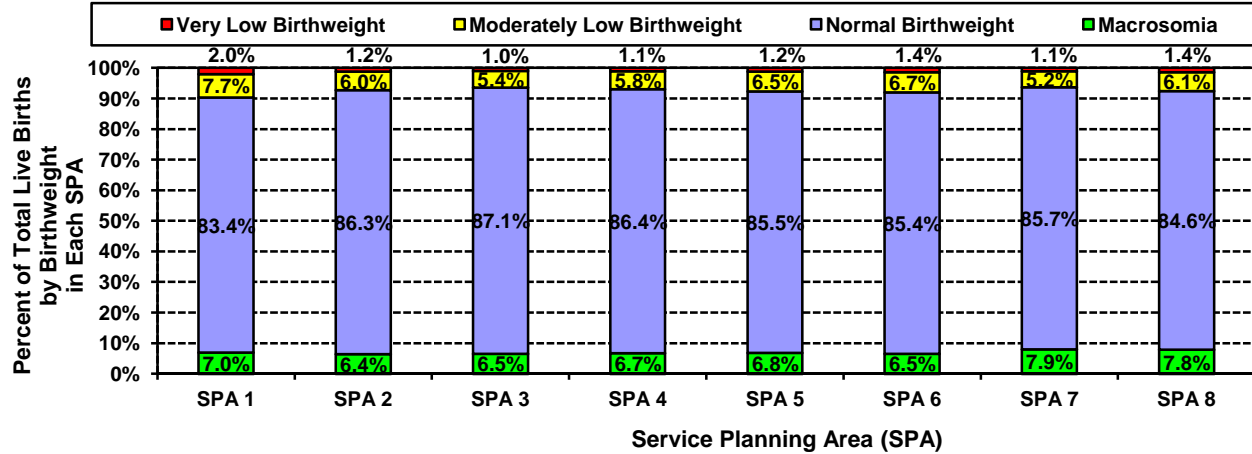
**Percent of Total Live Births
by Source of Payment for Prenatal Care (PNC) and by Mother's Race/Ethnicity
Los Angeles County, 2009**



Los Angeles County, 2009													Total Live Births
Mother's Race/Ethnicity	Source of Payment for Prenatal Care												
	No Prenatal Care		Private Insurance		Other Government Programs		Medi-Cal		Self Pay		Other/Unknown		
	Number	Percent	Number	Percent	Number	Percent	Number	Percent	Number	Percent	Number	Percent	
African American	53	0.5	3,643	34.4	479	4.5	5,764	54.4	167	1.6	483	4.6	10,589
Asian/PI	32	0.2	10,281	63.5	124	0.8	3,693	22.8	1,300	8.0	749	4.6	16,179
Hispanic	276	0.3	21,669	25.0	1,270	1.5	60,572	69.9	958	1.1	1,897	2.2	86,642
Native American	<5	N/C	82	40.6	7	3.5	90	44.6	9	4.5	13	6.4	202
White	66	0.3	17,429	75.3	120	0.5	4,135	17.9	515	2.2	885	3.8	23,150
Two or More Races	5	0.3	1,080	61.3	26	1.5	542	30.8	33	1.9	76	4.3	1,762
Other/Unknown	7	0.6	765	66.2	8	0.7	265	22.9	30	2.6	80	6.9	1,155
Total	440	0.3	54,949	39.3	2,034	1.5	75,061	53.7	3,012	2.2	4,183	3.0	139,679

Note: Racial/ethnic categorization has been revised in this report; data from previous year reports may not be comparable.
 Numbers fewer than 5 are shown as "<5". Rates are not calculated (N/C) if number is fewer than five.
 Source: California Department of Public Health, Center for Health Statistics, OHIR Vital Statistics Section, 2009.

**Percent of Total Live Births
by Birthweight and by Service Planning Area (SPA)
Los Angeles County, 2009**



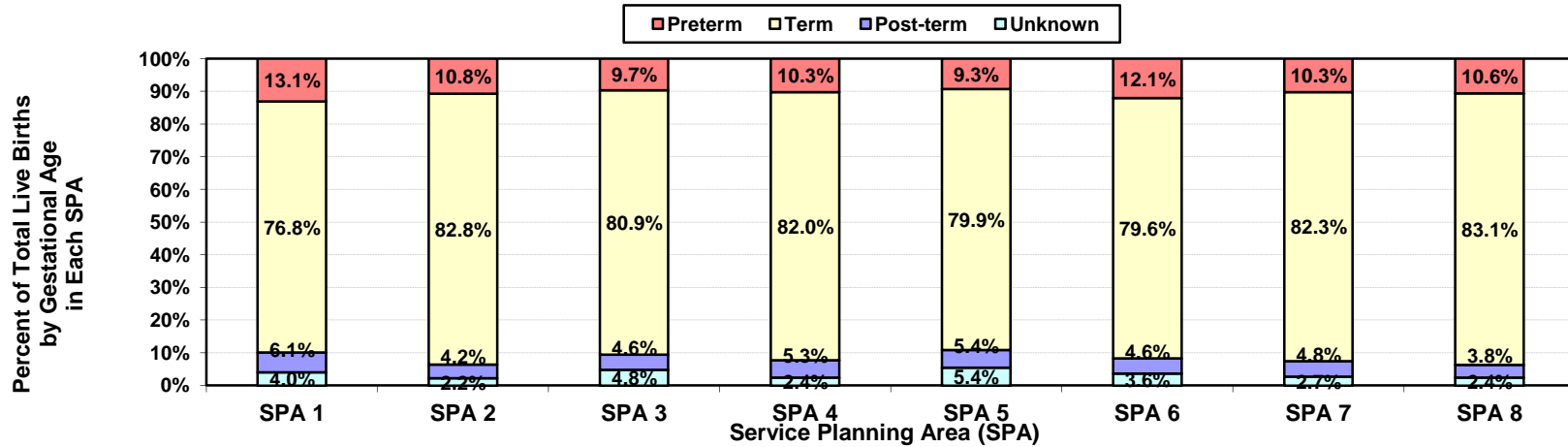
Los Angeles County, 2009									Total Live Births
Service Planning Area (SPA)	Very Low Birthweight		Moderately Low Birthweight		Normal Birthweight		Macrosomia		
	0 to 1,499 grams		1,500 to 2,499 grams		2,500 to 3,999 grams		4,000+ grams		
	Number	Percent	Number	Percent	Number	Percent	Number	Percent	
1 - Antelope Valley	116	2.0	447	7.7	4,852	83.4	405	7.0	5,820
2 - San Fernando	336	1.2	1,626	6.0	23,218	86.3	1,716	6.4	26,896
3 - San Gabriel	238	1.0	1,269	5.4	20,439	87.1	1,523	6.5	23,469
4 - Metro	171	1.1	879	5.8	13,097	86.4	1,020	6.7	15,167
5 - West	80	1.2	449	6.5	5,913	85.5	473	6.8	6,915
6 - South	288	1.4	1,380	6.7	17,721	85.4	1,354	6.5	20,743
7 - East	219	1.1	1,015	5.2	16,615	85.7	1,541	7.9	19,390
8 - South Bay	293	1.4	1,284	6.1	17,700	84.6	1,634	7.8	20,911
Unknown	10	2.7	39	10.6	297	80.7	22	6.0	368
Total	1,751	1.3	8,388	6.0	119,852	85.8	9,688	6.9	139,679

Note: The mothers' residential zip codes were used to allocate live births to corresponding SPA. SPA corresponding to each zip code (published in 2003) were designated using the zip code centroids. Published statistics based on other corresponding tables may vary when compared. Records that cannot be assigned to any SPA are classified as 'Unknown'.

Numbers fewer than 5 are shown as "<5". Rates are not calculated (N/C) if number is fewer than five.

Source: California Department of Public Health, Center for Health Statistics, OHIR Vital Statistics Section, 2009.

**Percent of Total Live Births
by Gestational Age and by Service Planning Area (SPA)
Los Angeles County, 2009**



Los Angeles County, 2009											
Service Planning Area (SPA)	Very Preterm		Moderate Preterm		Term		Post-term		Gestational Age Unknown		Total Live Births
	< 32 weeks		32-36 weeks		37-41 weeks		42+ weeks				
	Number	Percent	Number	Percent	Number	Percent	Number	Percent	Number	Percent	
1 - Antelope Valley	139	2.4	624	10.7	4,470	76.8	354	6.1	233	4.0	5,820
2 - San Fernando	386	1.4	2,512	9.3	22,280	82.8	1,138	4.2	580	2.2	26,896
3 - San Gabriel	290	1.2	1,990	8.5	18,987	80.9	1,077	4.6	1,125	4.8	23,469
4 - Metro	231	1.5	1,332	8.8	12,437	82.0	800	5.3	367	2.4	15,167
5 - West	75	1.1	570	8.2	5,523	79.9	371	5.4	376	5.4	6,915
6 - South	378	1.8	2,129	10.3	16,521	79.6	964	4.6	751	3.6	20,743
7 - East	272	1.4	1,716	8.8	15,955	82.3	930	4.8	517	2.7	19,390
8 - South Bay	365	1.7	1,856	8.9	17,384	83.1	803	3.8	503	2.4	20,911
Unknown	8	2.2	41	11.1	253	68.8	14	3.8	52	14.1	368
Total	2,144	1.5	12,770	9.1	113,810	81.5	6,451	4.6	4,504	3.2	139,679

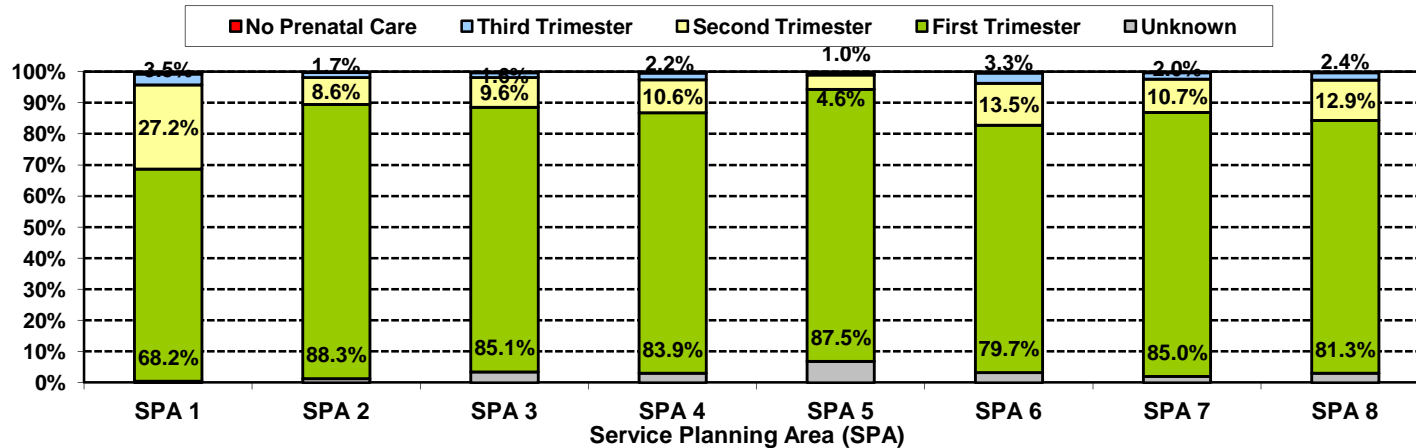
Note: Unknown includes those weeks of gestation not stated, less than 17 weeks of gestation, and 53 weeks or more gestation. These categories reflect inaccuracies rather than actual gestation periods. Gestation is calculated from reported date of last menses.

The mothers' residential zip codes were used to allocate live births to corresponding SPA. SPA corresponding to each zip code (published in 2003) were designated using the zip code centroids. Published statistics based on other corresponding tables may vary when compared. Records that cannot be assigned to any SPA are classified as 'Unknown'.

Source: California Department of Public Health, Center for Health Statistics, OHIR Vital Statistics Section, 2009.

**Percent of Total Live Births
by Mother's Trimester Prenatal Care (PNC) Began and by Service Planning Area (SPA)
Los Angeles County, 2009**

Percent of Total Live Births
by Mother's Trimester PNC Began
in Each SPA



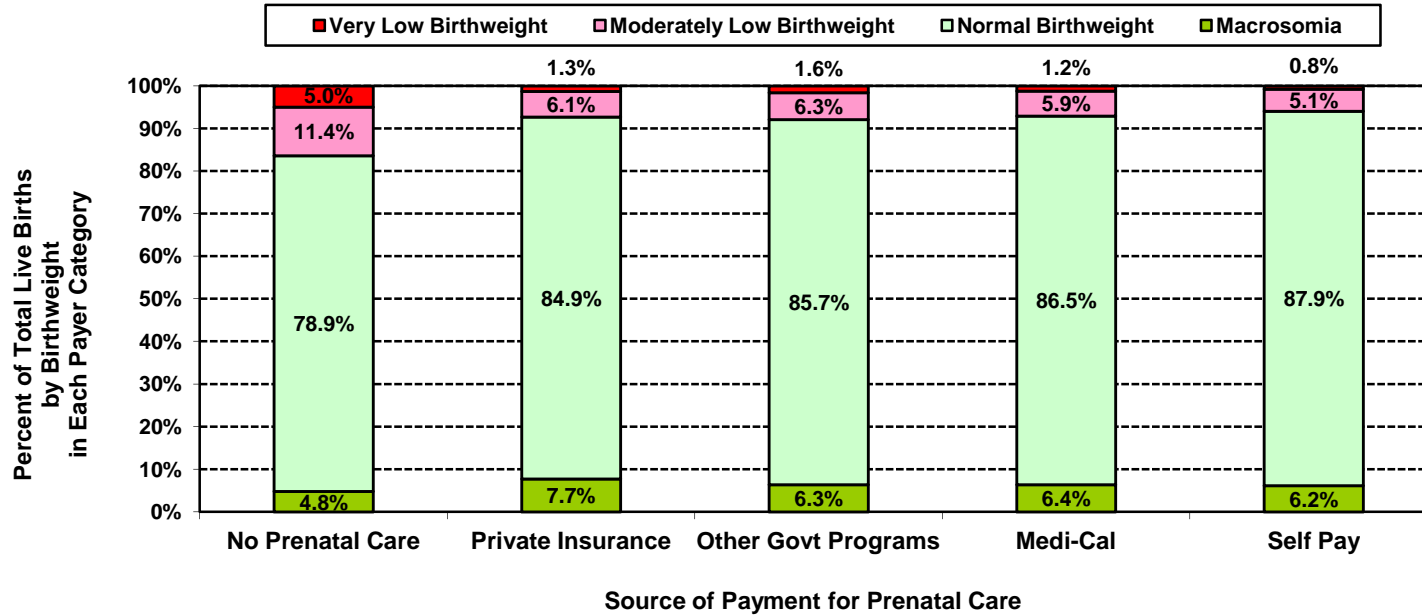
Los Angeles County, 2009											
Service Planning Area (SPA)	No Prenatal Care		Mother's Trimester Prenatal Care Began						Unknown		Total Live Births
			First		Second		Third				
	Number	Percent	Number	Percent	Number	Percent	Number	Percent	Number	Percent	
1 - Antelope Valley	40	0.7	3,970	68.2	1,581	27.2	202	3.5	27	0.5	5,820
2 - San Fernando	55	0.2	23,751	88.3	2,306	8.6	450	1.7	334	1.2	26,896
3 - San Gabriel	69	0.3	19,975	85.1	2,244	9.6	366	1.6	815	3.5	23,469
4 - Metro	56	0.4	12,721	83.9	1,602	10.6	330	2.2	458	3.0	15,167
5 - West	6	0.1	6,048	87.5	321	4.6	66	1.0	474	6.9	6,915
6 - South	73	0.4	16,524	79.7	2,795	13.5	687	3.3	664	3.2	20,743
7 - East	62	0.3	16,483	85.0	2,073	10.7	393	2.0	379	2.0	19,390
8 - South Bay	64	0.3	17,011	81.3	2,702	12.9	500	2.4	634	3.0	20,911
Unknown	15	4.1	234	63.6	42	11.4	20	5.4	57	15.5	368
Total	440	0.3	116,717	83.6	15,666	11.2	3,014	2.2	3,842	2.8	139,679

Note: "Trimester Prenatal Care (PNC) Began" excludes the prenatal care experiences of all women whose pregnancies did not result in a live birth. The mothers' residential zip codes were used to allocate live births to corresponding SPA. SPA corresponding to each zip code (published in 2003) were designated using the zip code centroids. Published statistics based on other corresponding tables may vary when compared. Records that cannot be assigned to any SPA are classified as 'Unknown'.

Numbers fewer than 5 are shown as "<5". Rates are not calculated (N/C) if number is fewer than five.

Source: California Department of Public Health, Center for Health Statistics, OHIR Vital Statistics Section, 2009.

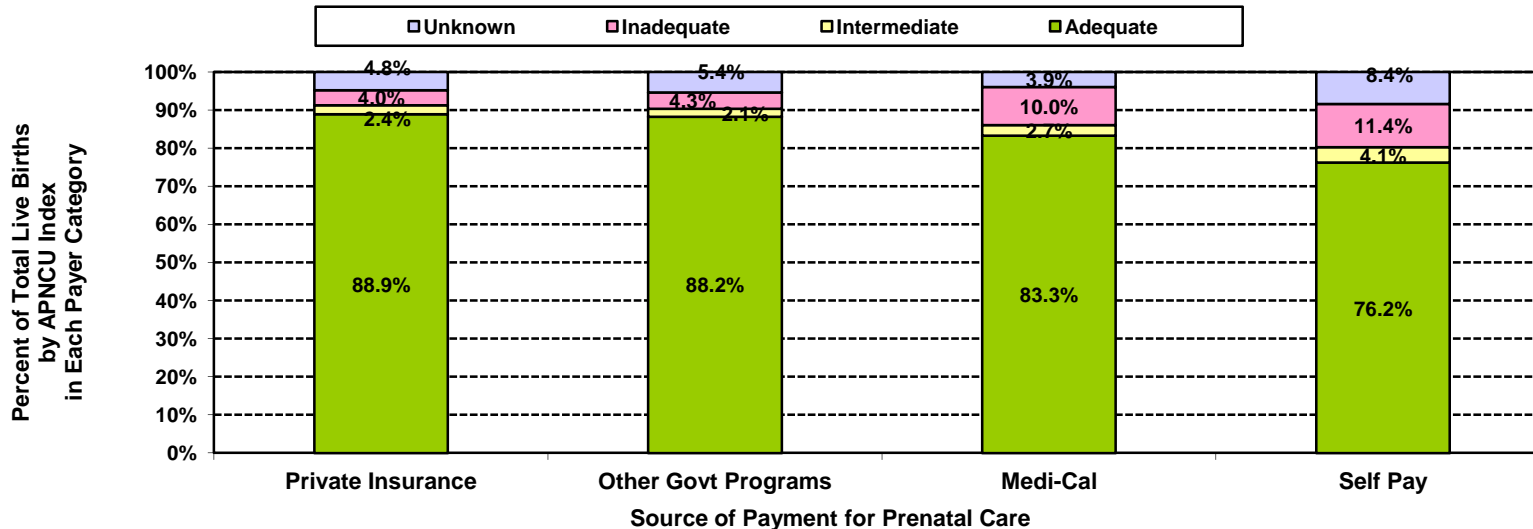
**Percent of Total Live Births
by Birthweight and by Source of Payment for Prenatal Care (PNC)
Los Angeles County, 2009**



Los Angeles County, 2009									Total Live Births
Source of Payment for Prenatal Care	Very Low Birthweight		Moderately Low Birthweight		Normal Birthweight		Macrosomia		
	0 to 1,499 grams		1,500 to 2,499 grams		2,500 to 3,999 grams		4,000+ grams		
	Number	Percent	Number	Percent	Number	Percent	Number	Percent	
No Prenatal Care	22	5.0	50	11.4	347	78.9	21	4.8	440
Private Insurance	700	1.3	3,338	6.1	46,658	84.9	4,253	7.7	54,949
Other Govt Programs	33	1.6	128	6.3	1,744	85.7	129	6.3	2,034
Medi-Cal	899	1.2	4,431	5.9	64,948	86.5	4,783	6.4	75,061
Self Pay	24	0.8	155	5.1	2,647	87.9	186	6.2	3,012
Other/Unknown	73	1.7	286	6.8	3,508	83.9	316	7.6	4,183
Total	1,751	1.3	8,388	6.0	119,852	85.8	9,688	6.9	139,679

Source: California Department of Public Health, Center for Health Statistics, OHIR Vital Statistics Section, 2009.

**Percent of Total Live Births by Adequacy of Prenatal Care Utilization Index
and by Source of Payment for Prenatal Care (PNC)
Los Angeles County, 2009**



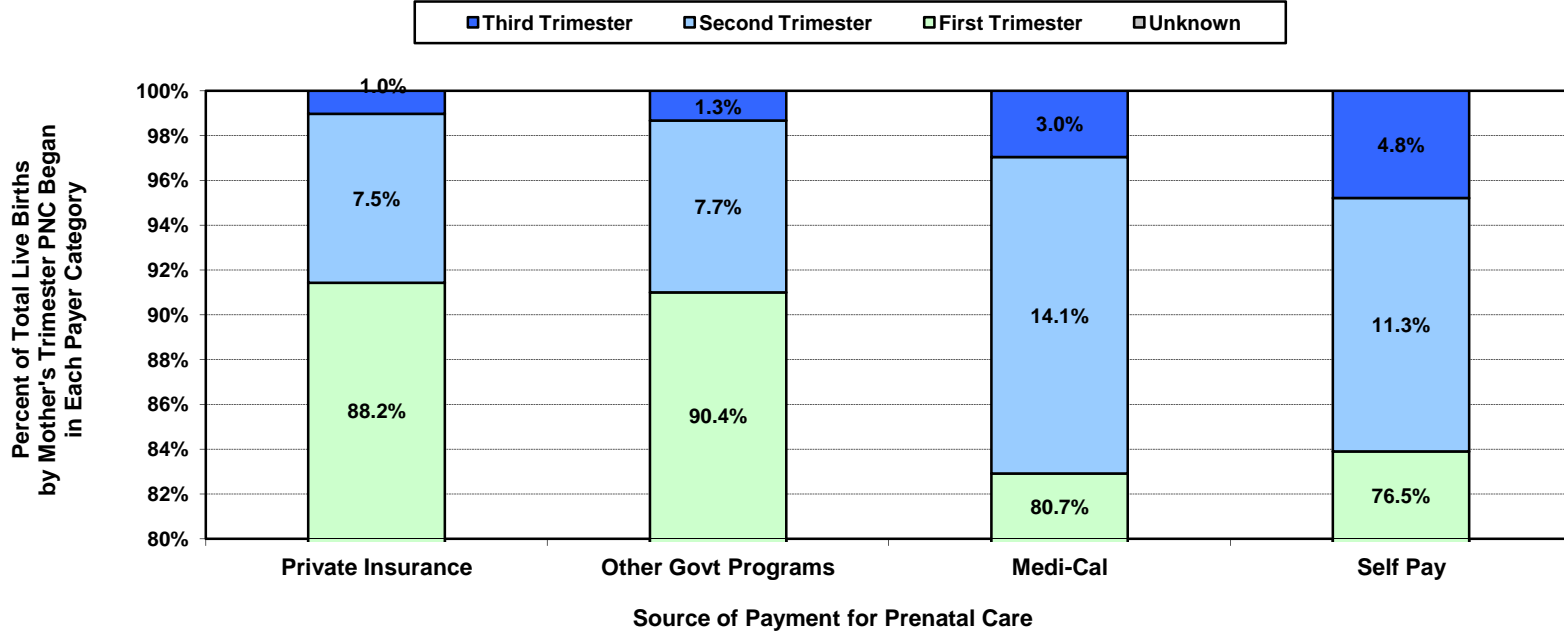
Los Angeles County, 2009									
Source of Payment for Prenatal Care	Adequacy of Prenatal Care Utilization Index						Unknown		Total Live Births
	Adequate		Intermediate		Inadequate		Number	Percent	
	Number	Percent	Number	Percent	Number	Percent			
No Prenatal Care	<5	N/C	<5	N/C	440	100.0	<5	N/C	440
Private Insurance	48,838	88.9	1,319	2.4	2,179	4.0	2,613	4.8	54,949
Other Govt Programs	1,795	88.2	43	2.1	87	4.3	109	5.4	2,034
Medi-Cal	62,539	83.3	2,060	2.7	7,514	10.0	2,948	3.9	75,061
Self Pay	2,295	76.2	122	4.1	343	11.4	252	8.4	3,012
Other/Unknown	3,644	87.1	92	2.2	243	5.8	204	4.9	4,183
Total	119,111	85.3	3,636	2.6	10,806	7.7	6,126	4.4	139,679

Note: The APNCU Index measures prenatal care utilization, which includes consideration of the month prenatal care began and the number of prenatal care visits during the time mothers actually received prenatal care. This utilization index is based on the recommendations established by the American College of Obstetrics and Gynecologists (ACOG). Appendix A contains the specific criteria for timing and number of prenatal care visits that are used to assign adequacy categories.

Numbers fewer than 5 are shown as "<5". Rates are not calculated (N/C) if number is fewer than five.

Source: California Department of Public Health, Center for Health Statistics, OHIR Vital Statistics Section, 2009.

**Percent of Total Live Births by Mother's Trimester Prenatal Care (PNC) Began
and by Source of Payment for Prenatal Care (PNC)
Los Angeles County, 2009**



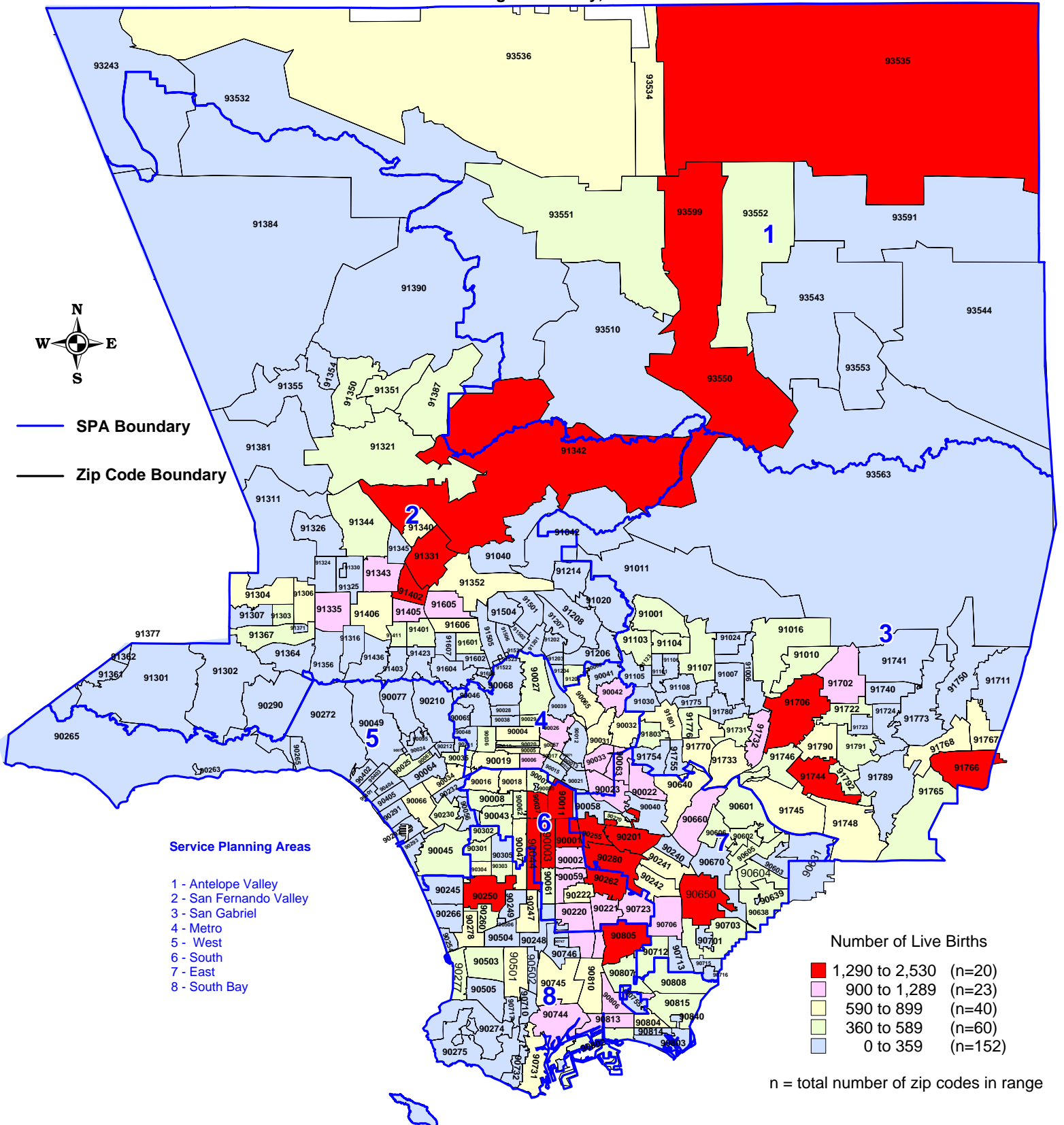
Los Angeles County, 2009											
Source of Payment for Prenatal Care	No Prenatal Care		Mother's Trimester Prenatal Care Began						Unknown		Total Live Births
	Number	Percent	First		Second		Third		Number	Percent	
			Number	Percent	Number	Percent	Number	Percent			
No Prenatal Care	440	100.0	<5	N/C	<5	N/C	<5	N/C	<5	N/C	440
Private Insurance	<5	N/C	48,480	88.2	4,142	7.5	566	1.0	1,761	3.2	54,949
Other Govt Programs	<5	N/C	1,839	90.4	156	7.7	27	1.3	12	0.6	2,034
Medi-Cal	<5	N/C	60,573	80.7	10,608	14.1	2,218	3.0	1,662	2.2	75,061
Self Pay	<5	N/C	2,305	76.5	341	11.3	144	4.8	222	7.4	3,012
Other/Unknown	<5	N/C	3,520	84.2	419	10.0	59	1.4	185	4.4	4,183
Total	440	0.3	116,717	83.6	15,666	11.2	3,014	2.2	3,842	2.8	139,679

Note: "Trimester Prenatal Care (PNC) Began" excludes the prenatal care experiences of all women whose pregnancies did not result in a live birth. Numbers fewer than 5 are shown as "<5". Rates are not calculated (N/C) if number is fewer than five.

Source: California Department of Public Health, Center for Health Statistics, OHIR Vital Statistics Section, 2009.

Number of Live Births by Zip Code* and Service Planning Area (SPA)

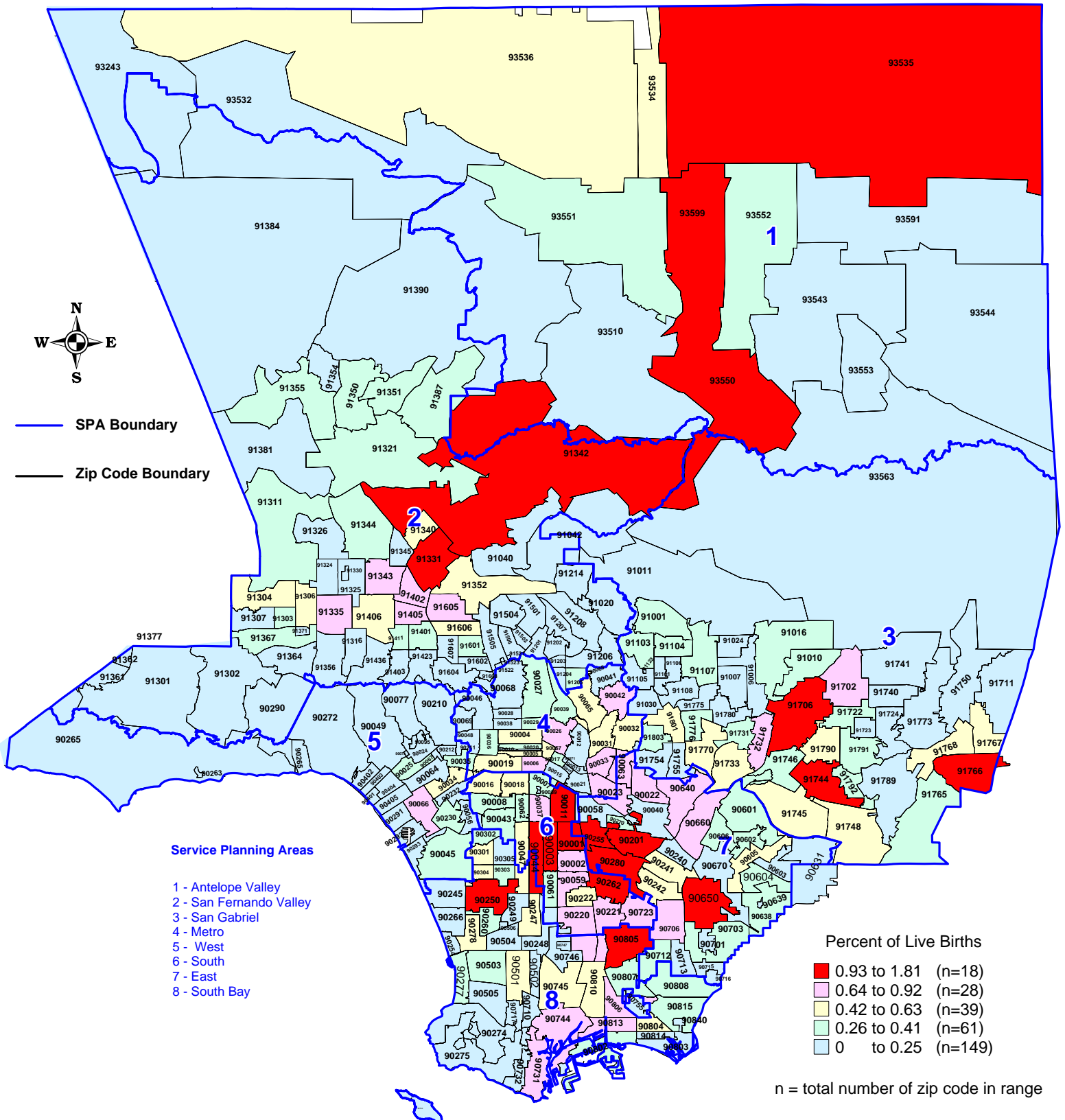
Los Angeles County, 2009



*Los Angeles County zip code boundaries as of April 2007
 Total number of live births in Los Angeles County, 2009 = 139,679
 Source : California Department of Public Health, Center for Health Statistics, OHIR Vital Statistics Section, 2009.

Percent of Live Births by Zip Code* and Service Planning Area (SPA)

Los Angeles County, 2009



*Los Angeles County zip code boundaries as of April 2007

Total number of live births in Los Angeles County, 2009 = 139,679

Percent of live births per 1,000 total population in Los Angeles County, 2009 = 13.4

Note: Percent of live births is the number of live births in each zip code divided by the total number of live births.

Source : California Department of Public Health, Center for Health Statistics, OHIR Vital Statistics Section, 2009.