

Live Births

TITLE V INDICATOR TEMPLATE

INDICATOR: Crude Birth Rate

DEFINITION: The number of live births per 1,000 total population

NUMERATOR: The number of live births, by place of residence, in a calendar year

DENOMINATOR: The total population, by place of residence, in a calendar year

HEALTHY PEOPLE 2010 OBJECTIVE:

None

RISK FACTORS: Not applicable

Year	California				Los Angeles County			
	Total Live Births		95% Confidence Interval		Total Live Births		95% Confidence Interval	
	Number	Rate	Lower	Upper	Number	Rate	Lower	Upper
1999	518,073	15.5	15.5	15.5	156,153	16.6	16.5	16.7
2000	531,285	15.6	15.5	15.6	157,391	16.4	16.4	16.5
2001	527,371	15.2	15.1	15.2	153,523	15.8	15.7	15.8
2002	529,245	15.0	14.9	15.0	151,167	15.3	15.2	15.3
2003	540,827	15.0	15.0	15.1	152,192	15.1	15.1	15.2
2004	544,685	14.9	14.9	15.0	151,504	14.9	14.8	15.0
2005	548,700	14.8	14.8	14.9	150,377	14.7	14.6	14.8
2006	562,157	15.0	15.0	15.1	151,837	14.8	14.7	14.9
2007	566,137	15.0	14.9	15.0	151,813	14.7	14.6	14.8
2008	551,567	14.4	14.4	14.4	147,684	14.2	14.1	14.3

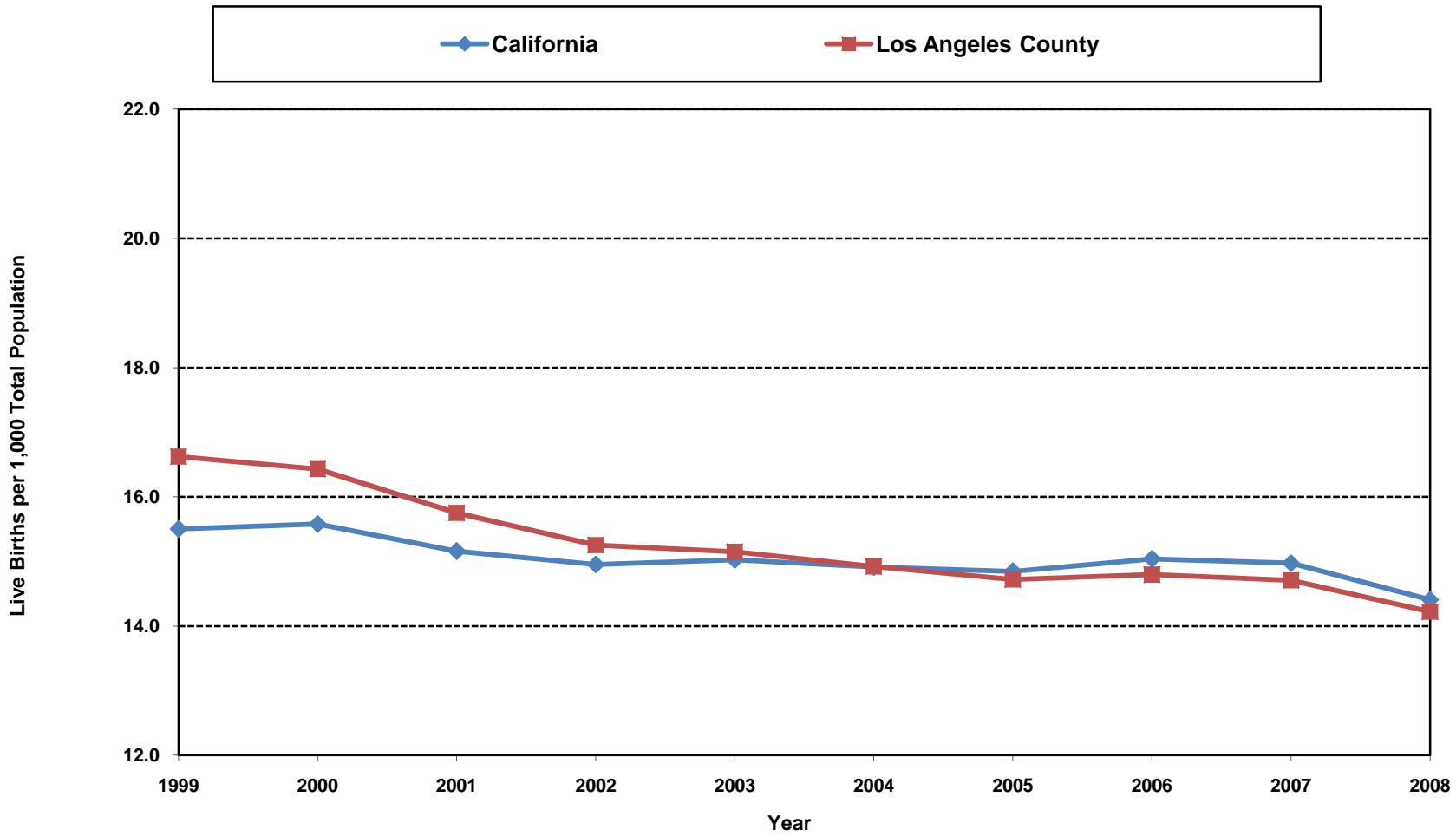
Denominator: Total Population		
Year	California	LA County
1999	33,418,581	9,394,314
2000	34,105,437	9,578,960
2001	34,789,735	9,747,138
2002	35,397,005	9,910,245
2003	35,994,731	10,046,518
2004	36,525,947	10,152,410
2005	36,957,436	10,216,326
2006	37,380,870	10,262,451
2007	37,810,582	10,323,161
2008	38,288,706	10,385,372

Sources: California Department of Public Health, Center for Health Statistics, OHIR Vital Statistics Section, 1999-2008.

Denominator data: California Department of Finance, "Race/Ethnic Population with Age and Sex Detail, 1990-1999", Sacramento, California, May, 2004.

Denominator data: California Department of Finance, "Race/Ethnic Population with Age and Sex Detail, 2000-2050", Sacramento, California, July 2007.

**Live Births per 1,000 Total Population
California vs. Los Angeles County, 1999-2008**



Sources: California Department of Public Health, Center for Health Statistics, OHIR Vital Statistics Section, 1999-2008.
Denominator data: California Department of Finance, "Race/Ethnic Population with Age and Sex Detail, 1990-1999", Sacramento, California, May, 2004.
Denominator data: California Department of Finance, "Race/Ethnic Population with Age and Sex Detail, 2000-2050", Sacramento, California, July 2007.

TITLE V INDICATOR TEMPLATE

INDICATOR: Percent of Total Live Births by Mother's Race/Ethnicity, 2008

DEFINITION: The percent of total live births for selected race/ethnic groups

NUMERATOR: Number of live births, by mother's race/ethnicity, by place of residence, in a calendar year

DENOMINATOR: Total number of live births, by place of residence, in a calendar year

HEALTHY PEOPLE 2010 OBJECTIVE:
None

RISK FACTORS: Not applicable

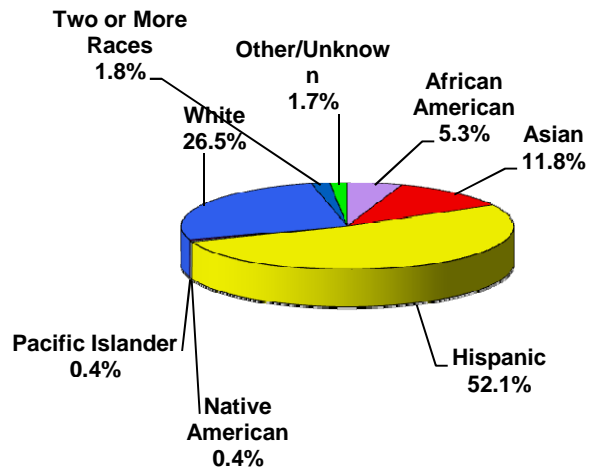
Mother's Race/Ethnicity	2008 California				2008 LA County			
	Live Births		95% Confidence Interval		Live Births		95% Confidence Interval	
	Number	Percent	Lower	Upper	Number	Percent	Lower	Upper
African American	29,428	5.3	5.3	5.4	11,016	7.5	7.3	7.6
Asian	64,825	11.8	11.7	11.8	16,189	11.0	10.8	11.1
Hispanic	287,323	52.1	52.0	52.2	92,643	62.7	62.5	63.0
Native American	2,032	0.4	0.4	0.4	170	0.1	0.1	0.1
Pacific Islander	2,481	0.4	0.4	0.5	478	0.3	0.3	0.4
White	146,309	26.5	26.4	26.6	24,238	16.4	16.2	16.6
Two or More Races	9,875	1.8	1.8	1.8	1,747	1.2	1.1	1.2
Other/Unknown	9,294	1.7	1.7	1.7	1,203	0.8	0.8	0.9
Total	551,567	100.0	100.0	100.0	147,684	100.0	100.0	100.0

Denominator: Total Live Births 2008	
California	LA County
551,567	147,684
551,567	147,684
551,567	147,684
551,567	147,684
551,567	147,684
551,567	147,684
551,567	147,684
551,567	147,684
551,567	147,684
551,567	147,684

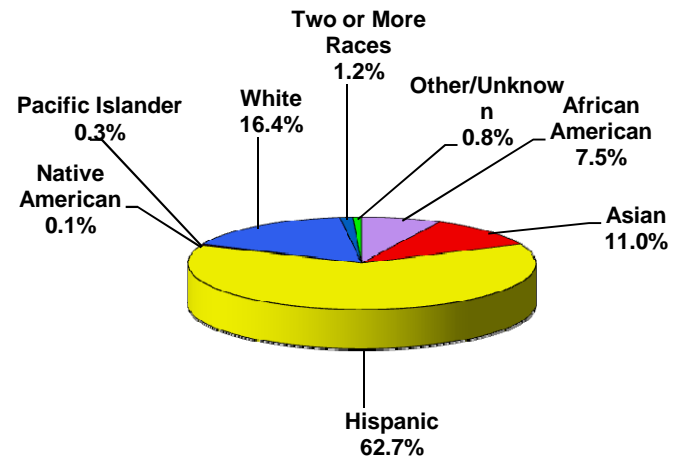
Note: Racial/ethnic categorization has been revised in this report; data from previous year reports may not be comparable.
 Filipinos are included with Asians.
 Source: California Department of Public Health, Center for Health Statistics, OHIR Vital Statistics Section, 2008.

**Percent of Total Live Births by Mother's Race/Ethnicity
California vs. Los Angeles County, 2008**

California Live Births



Los Angeles County Live Births



Note: Racial/ethnic categorization has been revised in this report; data from previous year reports may not be comparable.
Filipinos are included with Asians.

Source: California Department of Public Health, Center for Health Statistics, OHIR Vital Statistics Section, 2008.

TITLE V INDICATOR TEMPLATE

INDICATOR: Percent of Total Live Births by Mother's Race/Ethnicity, 2000-2008

DEFINITION: The percent of total live births for selected race/ethnic groups over time

NUMERATOR: Number of live births, by mother's race/ethnicity, by place of residence, in a calendar year

DENOMINATOR: Total number of live births, by place of residence, in a calendar year

HEALTHY PEOPLE 2010 OBJECTIVE:

None

RISK FACTORS: Not applicable

California Live Births																	
Year	African American		Asian*		Hispanic		Native American		Pacific Islander		White		Two or More Races		Other/Unknown		Total Births
	Number	Percent	Number	Percent	Number	Percent	Number	Percent	Number	Percent	Number	Percent	Number	Percent	Number	Percent	Number
2000	32,302	6.1	58,876	11.1	257,958	48.6	1,975	0.4	2,376	0.4	168,233	31.7	6,254	1.2	3,311	0.6	531,285
2001	30,965	5.9	57,443	10.9	260,996	49.5	1,986	0.4	2,355	0.4	163,777	31.1	6,388	1.2	3,461	0.7	527,371
2002	29,807	5.6	59,376	11.2	263,023	49.7	1,966	0.4	2,411	0.5	161,470	30.5	6,813	1.3	4,379	0.8	529,245
2003	29,211	5.4	61,525	11.4	269,691	49.9	2,004	0.4	2,409	0.4	162,920	30.1	7,112	1.3	5,955	1.1	540,827
2004	28,679	5.3	62,122	11.4	275,188	50.5	2,073	0.4	2,543	0.5	158,992	29.2	7,162	1.3	7,926	1.5	544,685
2005	28,756	5.2	61,735	11.3	282,823	51.5	2,116	0.4	2,528	0.5	155,900	28.4	7,382	1.3	7,460	1.4	548,700
2006	30,016	5.3	62,949	11.2	293,276	52.2	2,136	0.4	2,523	0.4	154,227	27.4	8,219	1.5	8,811	1.6	562,157
2007	29,479	5.2	66,234	11.7	296,917	52.4	2,012	0.4	2,608	0.5	150,931	26.7	9,456	1.7	8,500	1.5	566,137
2008	29,428	5.3	64,825	11.8	287,323	52.1	2,032	0.4	2,481	0.4	146,309	26.5	9,875	1.8	9,294	1.7	551,567

Note: Racial/ethnic categorization has been revised in this report; data from previous year reports may not be comparable. Filipinos are included with Asians.

Source: California Department of Public Health, Center for Health Statistics, OHIR Vital Statistics Section, 2000-2008.

TITLE V INDICATOR TEMPLATE

INDICATOR: Percent of Total Live Births by Mother's Race/Ethnicity, 2000-2008 (continued)

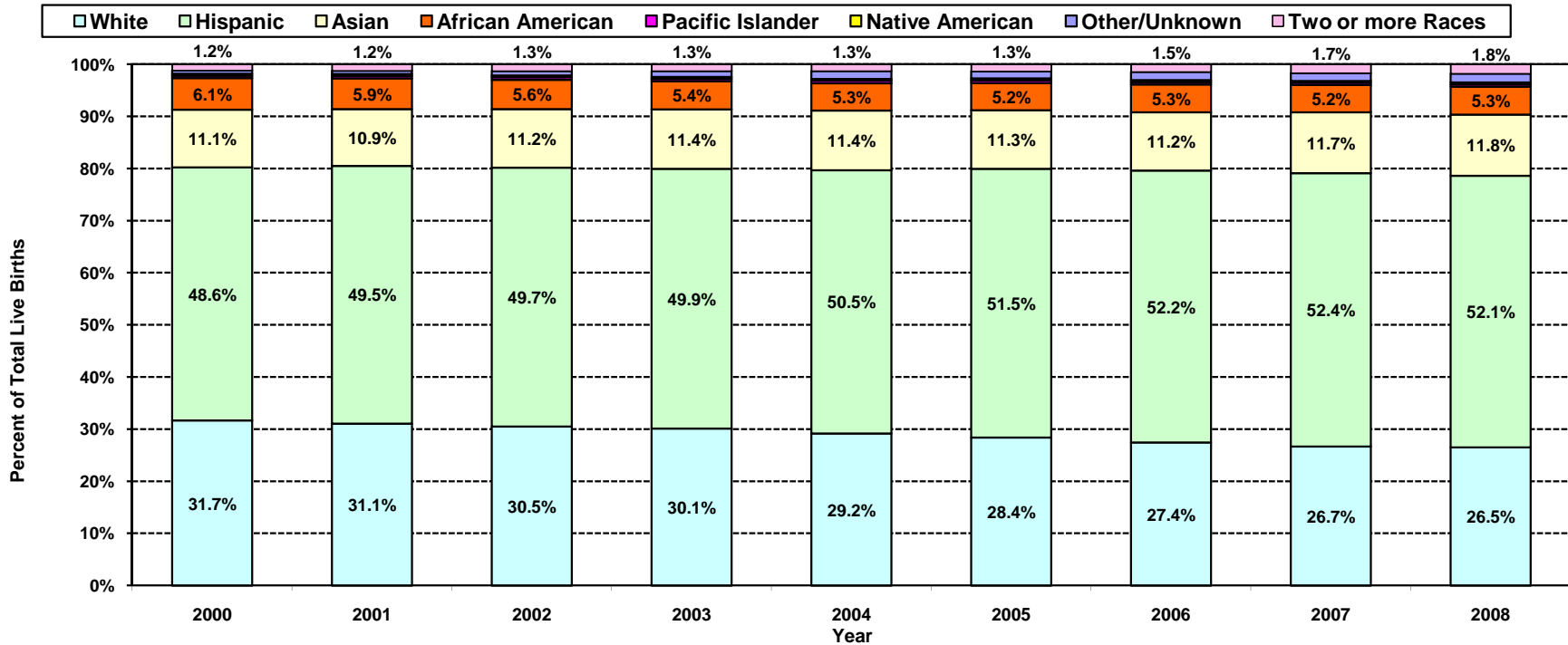
Los Angeles County Live Births																	
Year	African American		Asian*		Hispanic		Native American		Pacific Islander		White		Two or More Races		Other/Unknown		Total Births
	Number	Percent	Number	Percent	Number	Percent	Number	Percent	Number	Percent	Number	Percent	Number	Percent	Number	Percent	Number
2000	13,003	8.3	15,537	9.9	97,719	62.1	211	0.1	544	0.3	28,662	18.2	1,258	0.8	457	0.3	157,391
2001	12,175	7.9	14,696	9.6	96,288	62.7	219	0.1	527	0.3	27,708	18.0	1,322	0.9	588	0.4	153,523
2002	11,483	7.6	15,018	9.9	94,742	62.7	209	0.1	537	0.4	27,210	18.0	1,381	0.9	587	0.4	151,167
2003	11,296	7.4	15,412	10.1	95,070	62.5	177	0.1	510	0.3	27,589	18.1	1,474	1.0	664	0.4	152,192
2004	11,041	7.3	15,654	10.3	94,894	62.6	212	0.1	550	0.4	26,938	17.8	1,515	1.0	700	0.5	151,504
2005	10,931	7.3	15,460	10.3	94,780	63.0	189	0.1	538	0.4	26,100	17.4	1,506	1.0	873	0.6	150,377
2006	11,069	7.3	15,760	10.4	96,490	63.5	189	0.1	481	0.3	25,655	16.9	1,567	1.0	626	0.4	151,837
2007	10,858	7.2	16,789	11.1	95,686	63.0	191	0.1	493	0.3	25,137	16.6	1,717	1.1	942	0.6	151,813
2008	11,016	7.5	16,189	11.0	92,643	62.7	170	0.1	478	0.3	24,238	16.4	1,747	1.2	1,203	0.8	147,684

Note: Racial/ethnic categorization has been revised in this report; data from previous year reports may not be comparable.

Filipinos are included with Asians.

Source: California Department of Public Health, Center for Health Statistics, OHIR Vital Statistics Section, 2000-2008.

Percent of Total Live Births by Mother's Race/Ethnicity California, 2000-2008

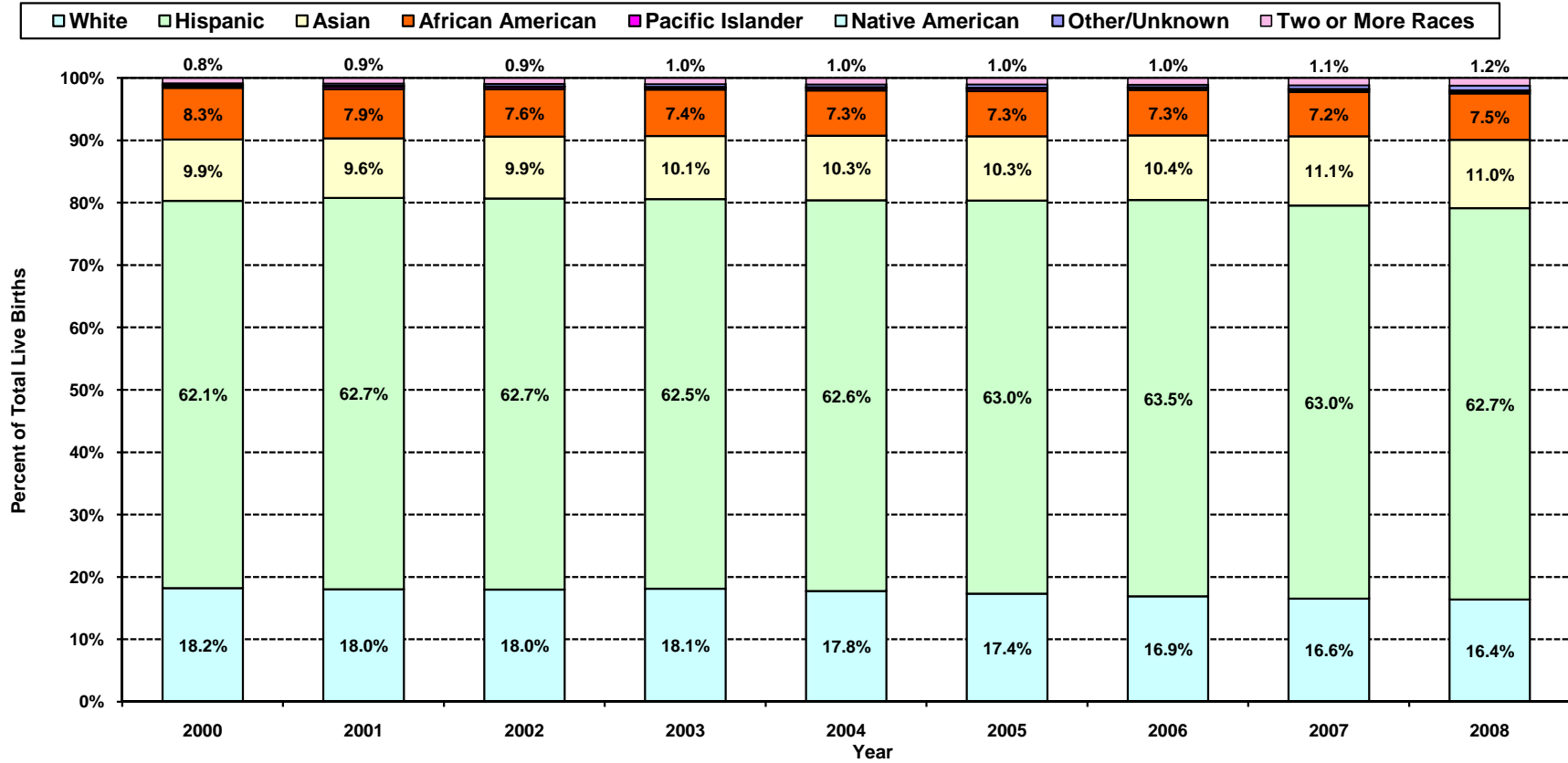


Note: Racial/ethnic categorization has been revised in this report; data from previous year reports may not be comparable.

Filipinos are included with Asians.

Source: California Department of Public Health, Center for Health Statistics, OHIR Vital Statistics Section, 2000-2008.

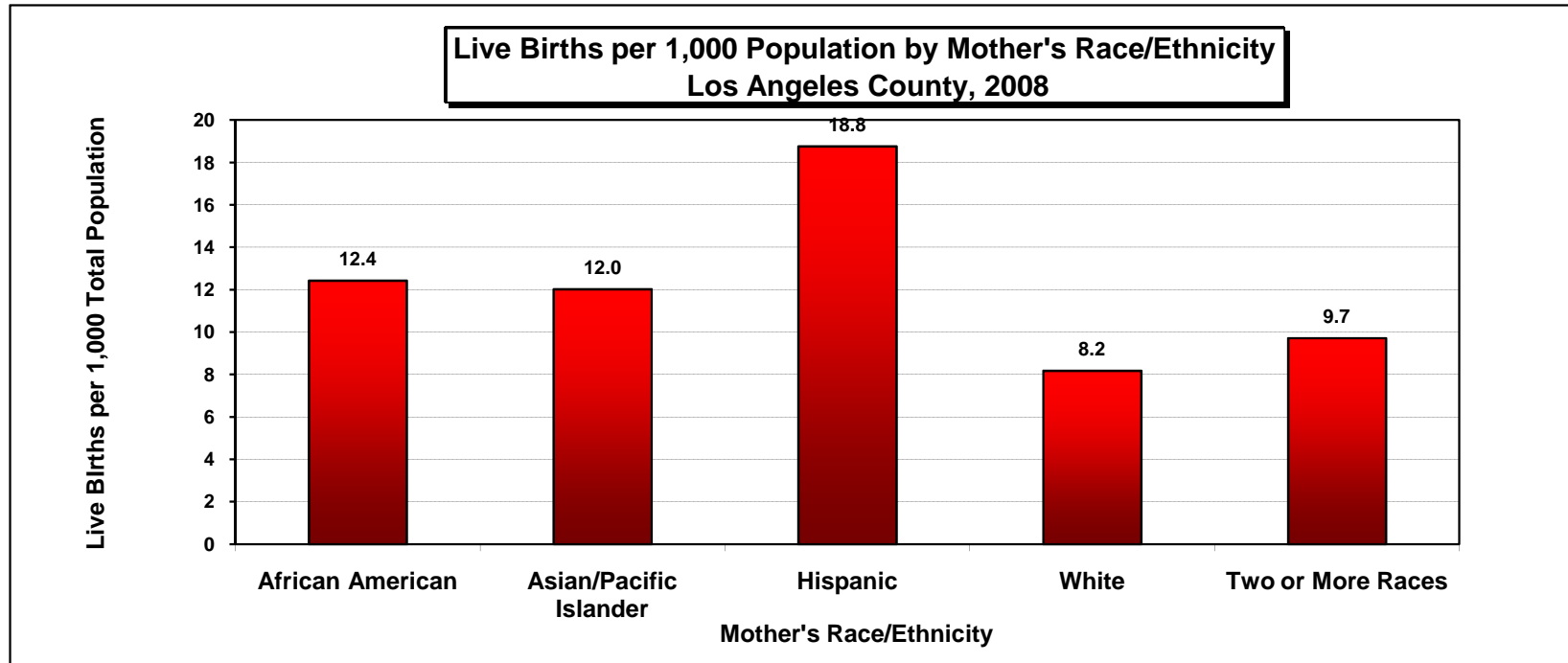
Percent of Total Live Births by Mother's Race/Ethnicity Los Angeles County, 2000-2008



Note: Racial/ethnic categorization has been revised in this report; data from previous year reports may not be comparable.

Filipinos are included with Asians.

Source: California Department of Public Health, Center for Health Statistics, OHIR Vital Statistics Section, 2000-2008.



Los Angeles County, 2008				
Mother's Race/Ethnicity	Live Births		95% Confidence Interval	
	Number	Rate	Lower	Upper
African American	11,016	12.4	12.2	12.7
Asian/Pacific Islander	16,667	12.0	11.8	12.2
Hispanic	92,643	18.8	18.6	18.9
Native American	170	5.6	4.7	6.4
White	24,238	8.2	8.1	8.3
Two or More Races	1,747	9.7	9.3	10.2
Other/Unknown	1,203	nc	nc	nc
Total	147,684	14.2	14.1	14.3

Total Population
886,951
1,386,839
4,938,416
30,530
2,962,811
179,825
n/a
10,385,372

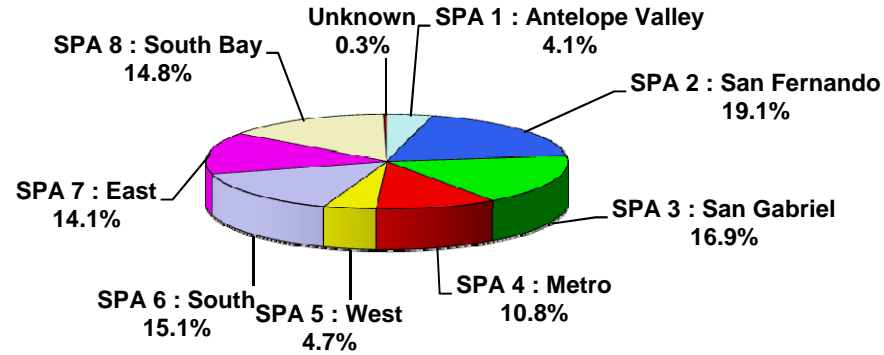
Note: Racial/ethnic categorization has been revised in this report; data from previous year reports may not be comparable.

N/A=Not Available; N/C=Not Calculated

Source: California Department of Public Health, Center for Health Statistics, OHIR Vital Statistics Section, 2008.

Denominator data: California Department of Finance, "Race/Ethnic Population with Age and Sex Detail, 2000-2050", Sacramento, California, July 2007.

**Percent of Total Live Births by Service Planning Area (SPA)
Los Angeles County, 2008**

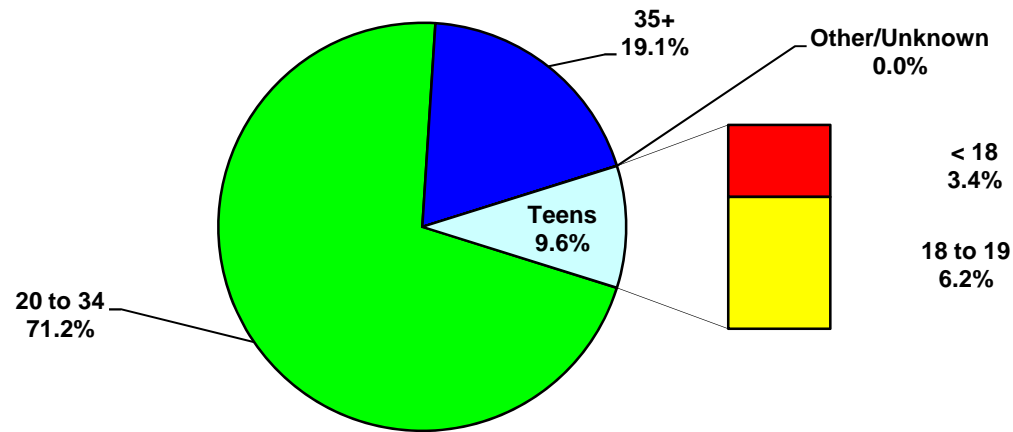


Los Angeles County, 2008				
Service Planning Area (SPA)	Live Births		95% Confidence Interval	
	Number	Percent	Lower	Upper
SPA 1 : Antelope Valley	6,087	4.1	4.0	4.2
SPA 2 : San Fernando	28,229	19.1	18.9	19.3
SPA 3 : San Gabriel	24,927	16.9	16.7	17.1
SPA 4 : Metro	15,994	10.8	10.7	11.0
SPA 5 : West	6,968	4.7	4.6	4.8
SPA 6 : South	22,372	15.1	15.0	15.3
SPA 7 : East	20,834	14.1	13.9	14.3
SPA 8 : South Bay	21,892	14.8	14.6	15.0
Unknown	381	0.3	0.2	0.3
Total	147,684	100.0	100.0	100.0

Note: The mothers' residential zip codes were used to allocate live births to corresponding SPA. SPA corresponding to each zip code (published in 2003) were designated using the zip code centroids. Published statistics based on other corresponding tables may vary when compared. Records that cannot be assigned to any SPA are classified as 'Unknown'.

Source: California Department of Public Health, Center for Health Statistics, OHIR Vital Statistics Section, 2008.

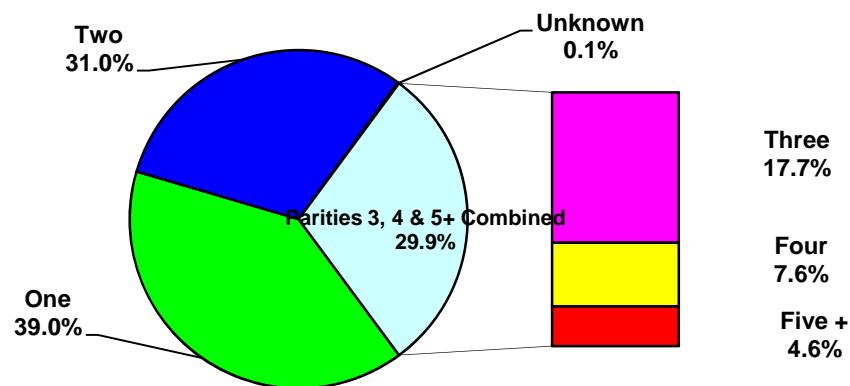
**Percent of Total Live Births by Mother's Age
Los Angeles County, 2008**



Los Angeles County, 2008				
Mother's Age	Live Births		95% Confidence Interval	
	Number	Percent	Lower	Upper
< 18	5,055	3.4	3.3	3.5
18 to 19	9,223	6.2	6.1	6.4
20 to 34	105,139	71.2	71.0	71.4
35+	28,252	19.1	18.9	19.3
Other/Unknown	15	0.01	0.01	0.02
Total	147,684	100.0	100.0	100.0

Source: California Department of Public Health, Center for Health Statistics, OHIR Vital Statistics Section, 2008.

**Percent of Total Live Births by Parity
Los Angeles County, 2008**

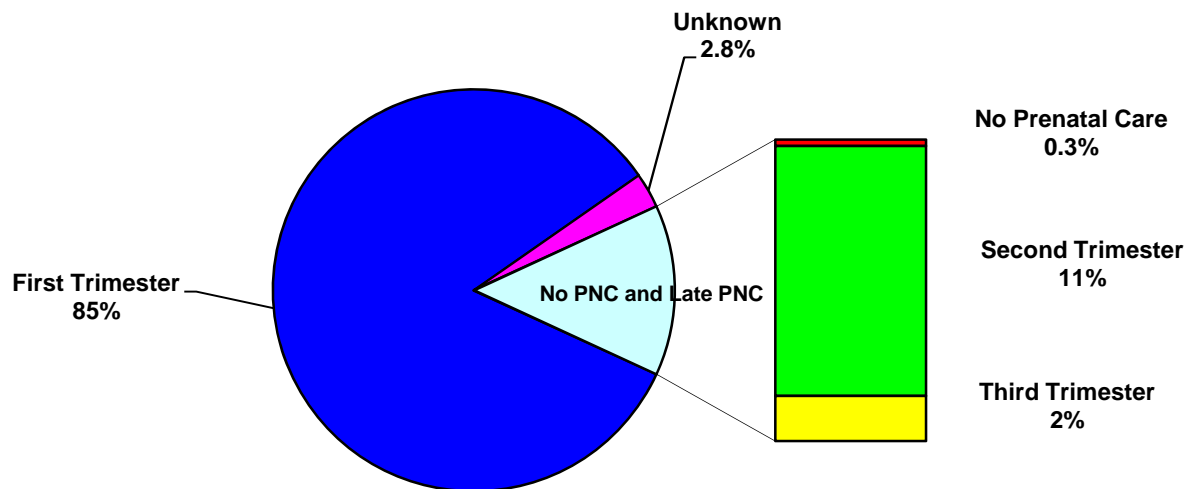


Los Angeles County, 2008				
Parity	Live Births		95% Confidence Interval	
	Number	Percent	Lower	Upper
1	58,620	39.7	39.4	39.9
2	44,935	30.4	30.2	30.7
3	26,007	17.6	17.4	17.8
4	11,080	7.5	7.4	7.6
5+	6,835	4.6	4.5	4.7
Unknown	207	0.1	0.1	0.2
Total	147,684	100.0	100.0	100.0

Note: Parity = number of pregnancies resulting in live births to a woman.

Source: California Department of Public Health, Center for Health Statistics, OHIR Vital Statistics Section, 2008.

**Percent of Total Live Births by Mother's Trimester Prenatal Care (PNC) Began
Los Angeles County, 2008**



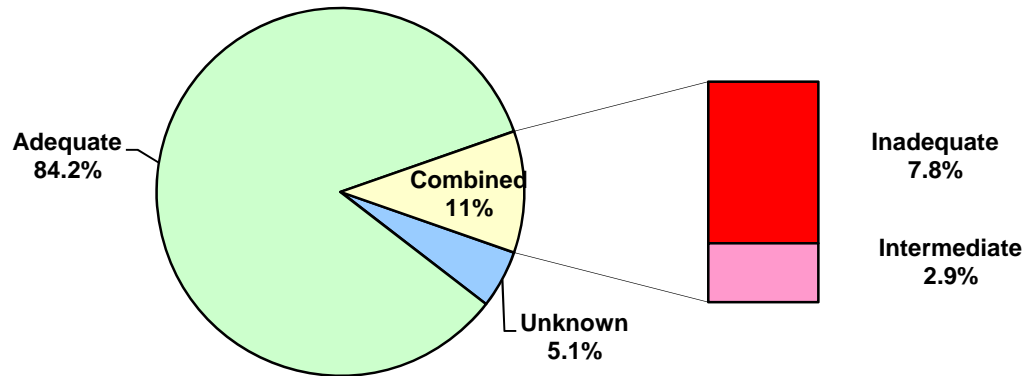
Los Angeles County, 2008				
Mother's Trimester Prenatal Care Began	Live Births		95% Confidence Interval	
	Number	Percent	Lower	Upper
No Prenatal Care	430	0.3	0.3	0.3
First	123,251	83.5	83.3	83.6
Second	16,791	11.4	11.2	11.5
Third	3,024	2.0	2.0	2.1
Unknown	4,188	2.8	2.8	2.9
Total	147,684	100.0	100.0	100.0

Year 2010 Objective: Increase the proportion of pregnant women who receive prenatal care in the first trimester of pregnancy to 90 percent of live births.

Note: "Trimester Prenatal Care (PNC) Began" excludes the prenatal care experiences of all women whose pregnancies did not result in a live birth.

Source: California Department of Public Health, Center for Health Statistics, OHIR Vital Statistics Section, 2008.

**Percent of Total Live Births by Adequacy of Prenatal Care Utilization Index
Los Angeles County, 2008**



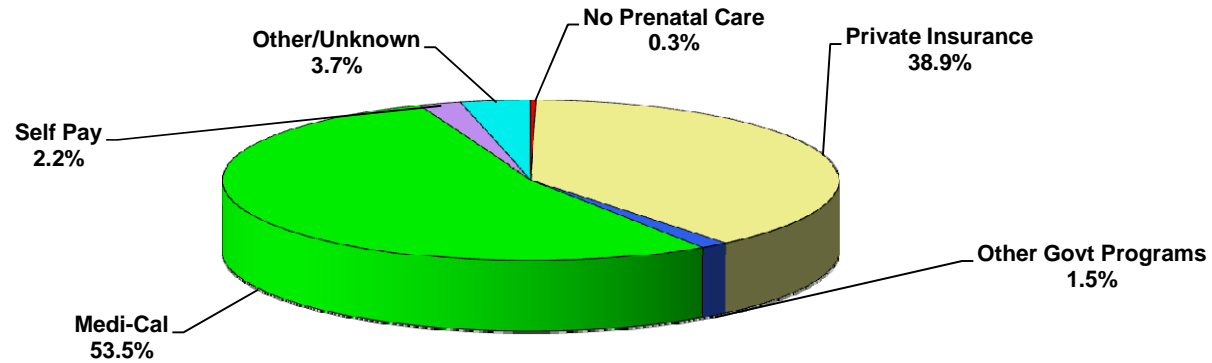
Los Angeles County, 2008				
Adequacy of Prenatal Care Utilization Index	Live Births		95% Confidence Interval	
	Number	Percent	Lower	Upper
Adequate	124,381	84.2	84.0	84.4
Intermediate	4,217	2.9	2.8	2.9
Inadequate	11,568	7.8	7.7	8.0
Unknown	7,518	5.1	5.0	5.2
Total	147,684	100.0	100.0	100.0

Year 2010 Objective: Increase the proportion of pregnant women who receive early and adequate prenatal care to 90 percent of live births.

Note: The APNCU Index measures prenatal care utilization, which includes consideration of the month prenatal care began and the number of prenatal care visits during the time mothers actually received prenatal care. This utilization index is based on the recommendations established by the American College of Obstetrics and Gynecologists (ACOG). Appendix A contains the specific criteria for timing and number of prenatal care visits that are used to assign adequacy categories.

Source: California Department of Public Health, Center for Health Statistics, OHIR Vital Statistics Section, 2008.

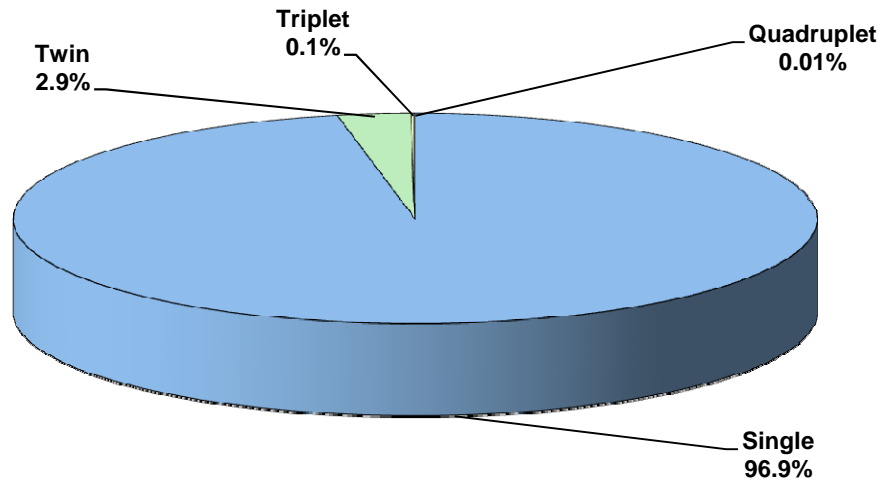
**Percent of Total Live Births by Source of Payment for Prenatal Care (PNC)
Los Angeles County, 2008**



Los Angeles County, 2008				
Source of Payment for Prenatal Care	Live Births		95% Confidence Interval	
	Number	Percent	Lower	Upper
No Prenatal Care	430	0.3	0.3	0.3
Private Insurance	57,380	38.9	38.6	39.1
Other Govt Programs	2,180	1.5	1.4	1.5
Medi-Cal	79,031	53.5	53.3	53.8
Self Pay	3,256	2.2	2.1	2.3
Other/Unknown	5,407	3.7	3.6	3.8
Total	147,684	100.0	100.0	100.0

Source: California Department of Public Health, Center for Health Statistics, OHIR Vital Statistics Section, 2008.

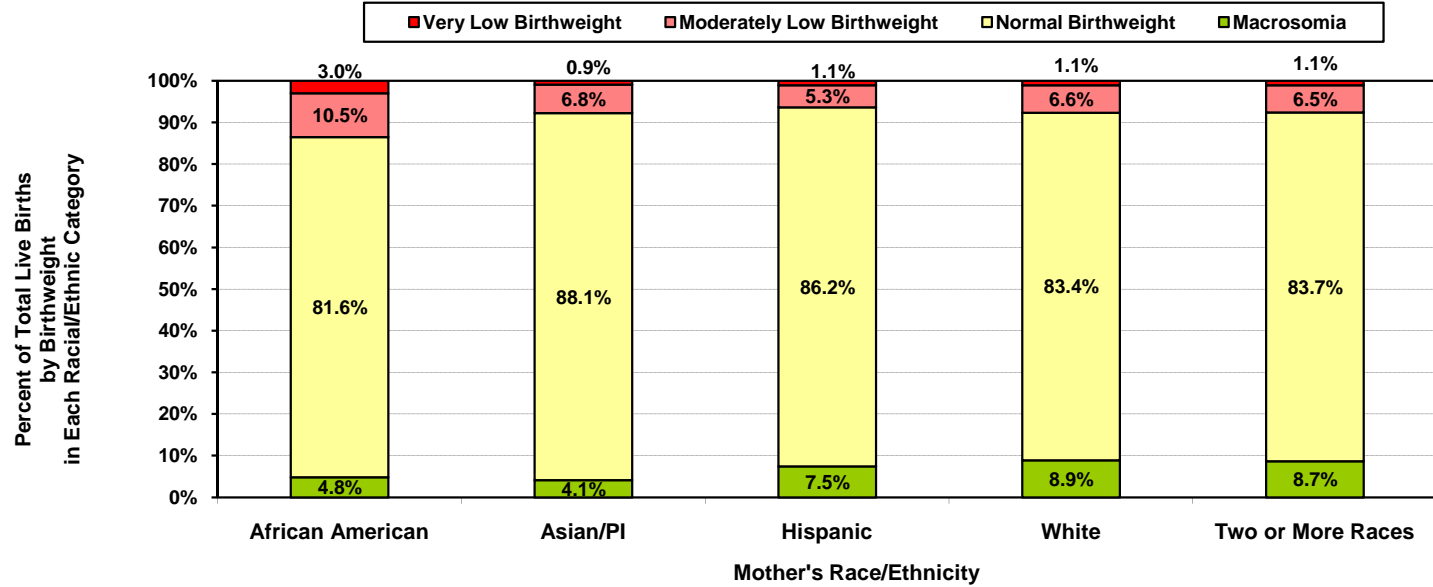
**Percent of Total Live Births by Type of Birth
Los Angeles County, 2008**



Los Angeles County, 2008				
Birth Type	Live Births		95% Confidence Interval	
	Number	Percent	Lower	Upper
Single	143,117	96.9	96.8	97.0
Twin	4,340	2.9	2.9	3.0
Triplet	215	0.1	0.1	0.2
Quadruplet	12	0.01	0.00	0.01
Total	147,684	100.0	100.0	100.0

Source: California Department of Public Health, Center for Health Statistics, OHIR Vital Statistics Section, 2008.

**Percent of Total Live Births
by Birthweight and by Mother's Race/Ethnicity
Los Angeles County, 2008**



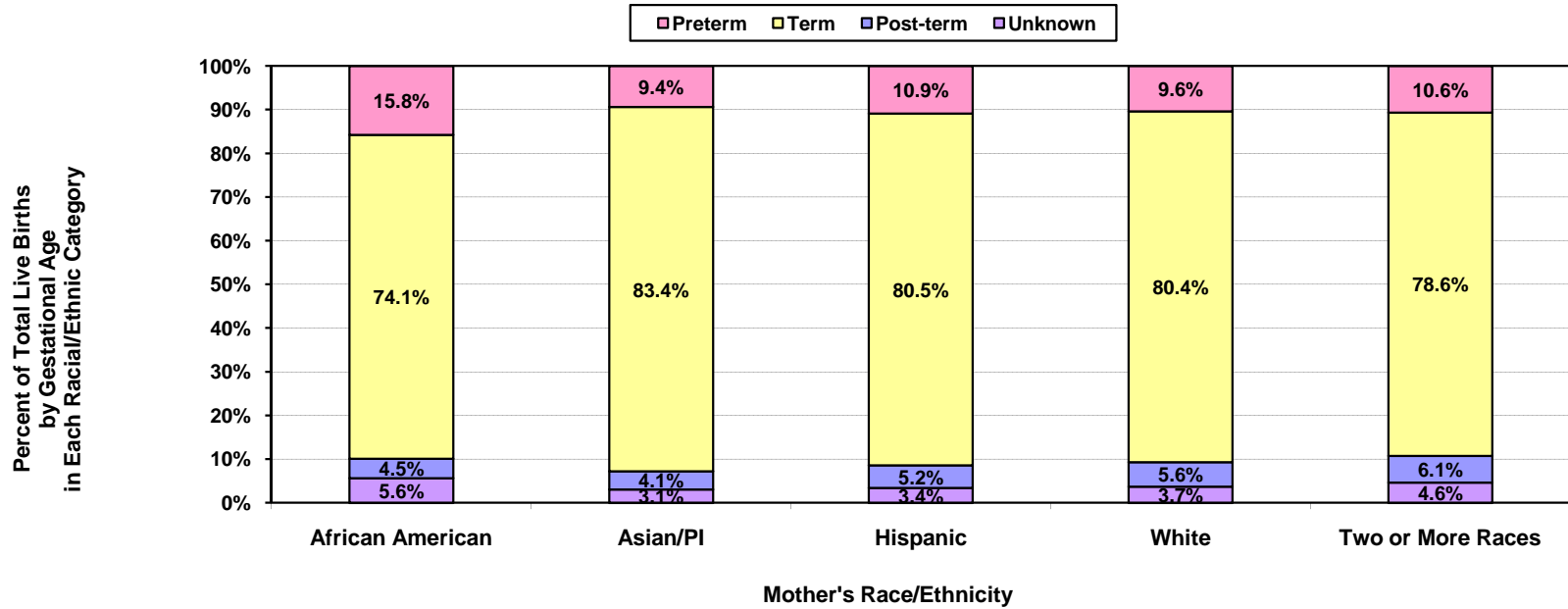
Los Angeles County, 2008											
Mother's Race/Ethnicity	Very Low Birthweight		Moderately Low Birthweight		Normal Birthweight		Macrosomia		Birthweight Unknown		Total Live Births
	0 to 1,499 grams		1,500 to 2,499 grams		2,500 to 3,999 grams		4,000+ grams				
	Number	Percent	Number	Percent	Number	Percent	Number	Percent	Number	Percent	
African American	327	3.0	1,161	10.5	8,994	81.6	533	4.8	<5	N/C	11,016
Asian/PI	154	0.9	1,138	6.8	14,686	88.1	689	4.1	<5	N/C	16,667
Hispanic	990	1.1	4,904	5.3	79,833	86.2	6,916	7.5	<5	N/C	92,643
Native American	<5	N/C	12	7.1	137	80.6	18	10.6	<5	N/C	170
White	262	1.1	1,589	6.6	20,219	83.4	2,168	8.9	<5	N/C	24,238
Two or More Races	19	1.1	114	6.5	1,462	83.7	152	8.7	<5	N/C	1,747
Other/Unknown	39	3.2	88	7.3	996	82.8	80	6.7	<5	N/C	1,203
Total	1,794	1.2	9,006	6.1	126,327	85.5	10,556	7.1	<5	N/C	147,684

Note: Racial/ethnic categorization has been revised in this report; data from previous year reports may not be comparable.

Numbers fewer than 5 are shown as "<5". Rates are not calculated (N/C) if number is fewer than five.

Source: California Department of Public Health, Center for Health Statistics, OHIR Vital Statistics Section, 2008.

**Percent of Total Live Births
by Gestational Age and by Mother's Race/Ethnicity
Los Angeles County, 2008**



Los Angeles County, 2008											
Mother's Race/Ethnicity	Very Preterm		Moderately Preterm		Term		Post-term		Gestational Age Unknown		Total Live Births
	< 32 weeks		32-36 weeks		37-41 weeks		42+ weeks				
	Number	Percent	Number	Percent	Number	Percent	Number	Percent	Number	Percent	
African American	365	3.3	1,371	12.4	8,168	74.1	491	4.5	621	5.6	11,016
Asian/PI	190	1.1	1,373	8.2	13,905	83.4	685	4.1	514	3.1	16,667
Hispanic	1,378	1.5	8,721	9.4	74,560	80.5	4,808	5.2	3,176	3.4	92,643
Native American	<5	N/C	16	9.4	140	82.4	5	2.9	6	3.5	170
White	320	1.3	2,186	9.0	19,478	80.4	1,347	5.6	907	3.7	24,238
Two or More Races	26	1.5	160	9.2	1,373	78.6	107	6.1	81	4.6	1,747
Other/Unknown	38	3.2	101	8.4	866	72.0	56	4.7	142	11.8	1,203
Total	2,320	1.6	13,928	9.4	118,490	80.2	7,499	5.1	5,447	3.7	147,684

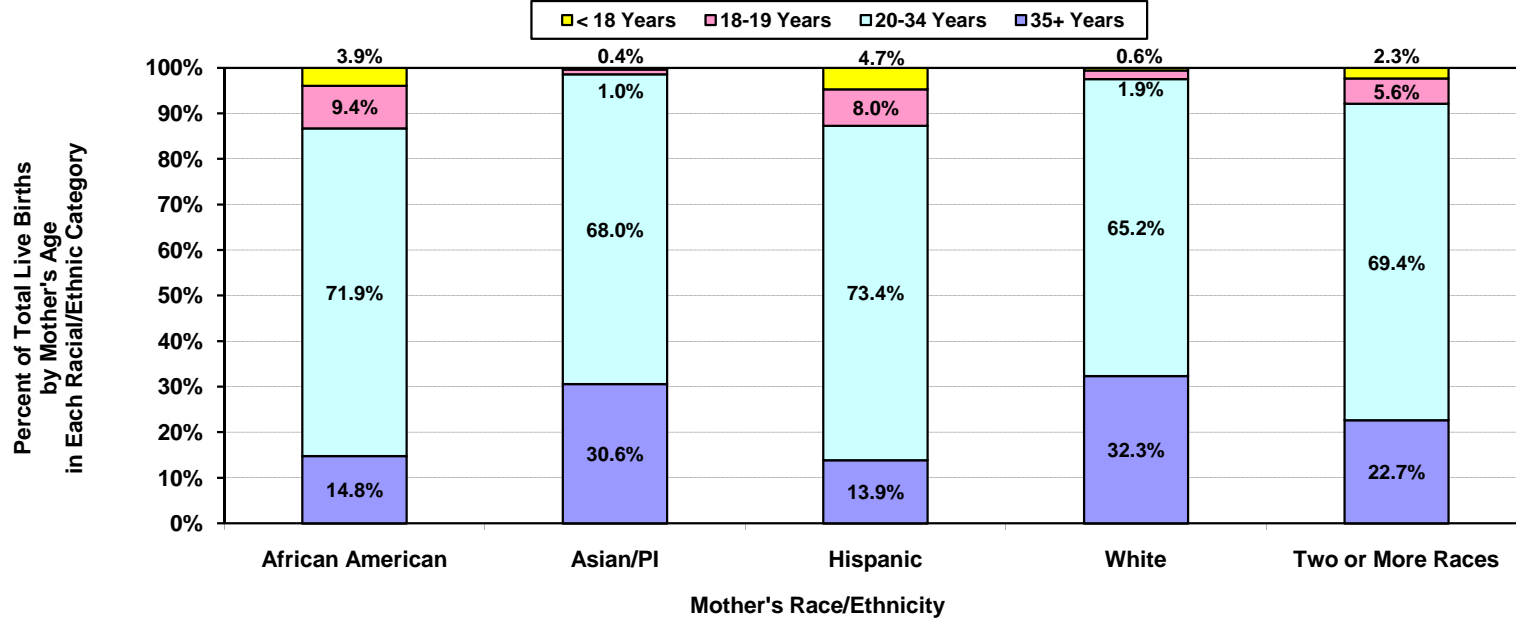
Note: Unknown includes those weeks of gestation not stated, less than 17 weeks of gestation, and 53 weeks or more gestation. These categories reflect inaccuracies rather than actual gestation periods. Gestation is calculated from reported date of last menses.

Racial/ethnic categorization has been revised in this report; data from previous year reports may not be comparable.

Numbers fewer than 5 are shown as "<5". Rates are not calculated (N/C) if number is fewer than five.

Source: California Department of Public Health, Center for Health Statistics, OHIR Vital Statistics Section, 2008.

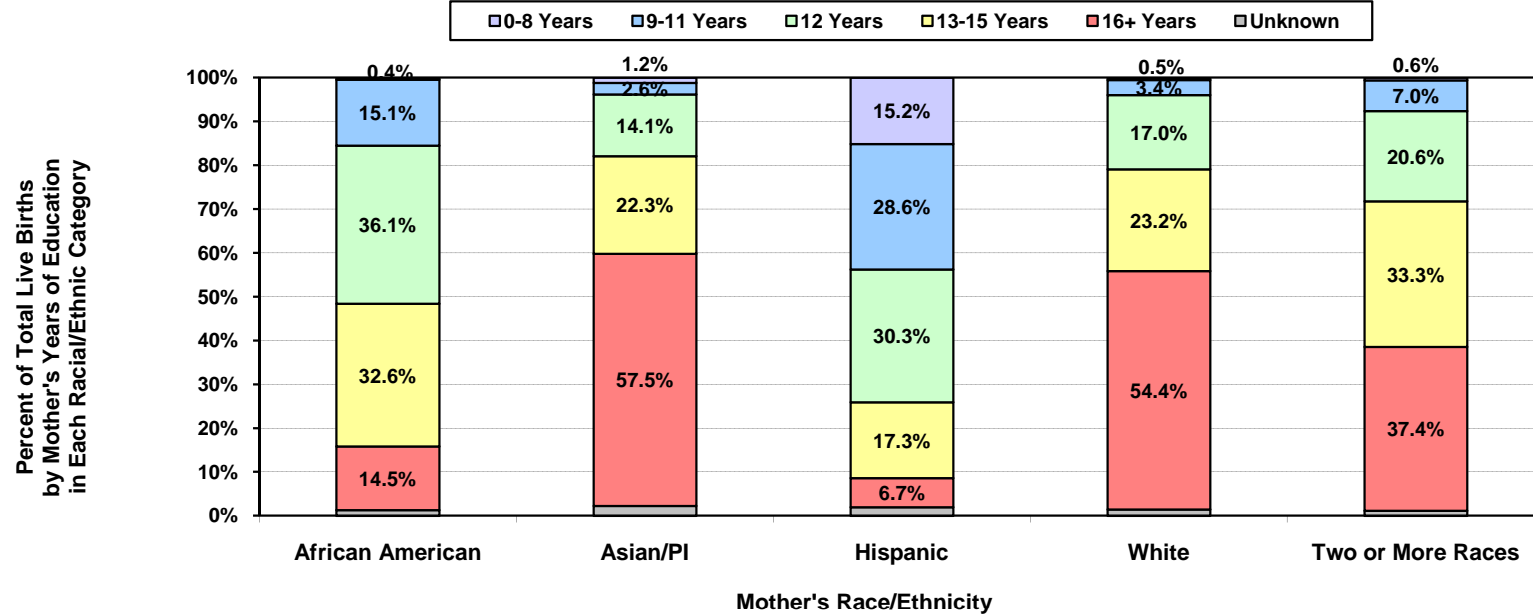
**Percent of Total Live Births
by Mother's Age and by Mother's Race/Ethnicity
Los Angeles County, 2008**



Los Angeles County, 2008											Total Live Births
Mother's Race/Ethnicity	Mother's Age										
	< 18		18 - 19		20 - 34		35+		Unknown		
	Number	Percent	Number	Percent	Number	Percent	Number	Percent	Number	Percent	
African American	432	3.9	1,031	9.4	7,920	71.9	1,633	14.8	<5	N/C	11,016
Asian/PI	63	0.4	171	1.0	11,335	68.0	5,098	30.6	<5	N/C	16,667
Hispanic	4,359	4.7	7,414	8.0	67,991	73.4	12,875	13.9	<5	N/C	92,643
Native American	<5	N/C	12	7.1	134	78.8	21	12.4	<5	N/C	170
White	134	0.6	455	1.9	15,809	65.2	7,840	32.3	<5	N/C	24,238
Two or More Races	40	2.3	98	5.6	1,213	69.4	396	22.7	<5	N/C	1,747
Other/Unknown	24	2.0	42	3.5	737	61.3	389	32.3	11	0.9	1,203
Total	5,055	3.4	9,223	6.2	105,139	71.2	28,252	19.1	15	0.0	147,684

Note: Racial/ethnic categorization has been revised in this report; data from previous year reports may not be comparable.
 Numbers fewer than 5 are shown as "<5". Rates are not calculated (N/C) if number is fewer than five.
 Source: California Department of Public Health, Center for Health Statistics, OHIR Vital Statistics Section, 2008.

**Percent of Total Live Births
by Mother's Years of Education and by Mother's Race/Ethnicity
Los Angeles County, 2008**



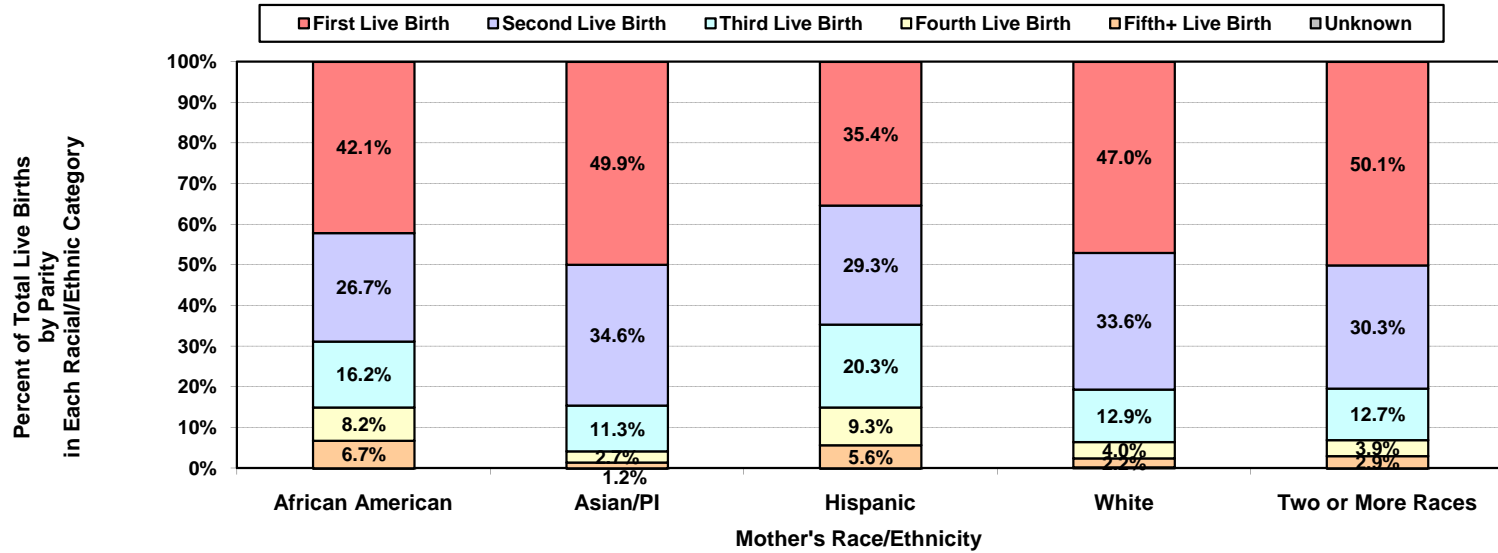
Los Angeles County, 2008													Total Live Births
Mother's Race/Ethnicity	Mother's Years of Education												
	0 to 8		9 to 11		12		13 to 15		16+		Unknown		
	Number	Percent	Number	Percent	Number	Percent	Number	Percent	Number	Percent	Number	Percent	
African American	47	0.4	1,664	15.1	3,974	36.1	3,587	32.6	1,601	14.5	143	1.3	11,016
Asian/PI	201	1.2	439	2.6	2,349	14.1	3,710	22.3	9,590	57.5	378	2.3	16,667
Hispanic	14,045	15.2	26,490	28.6	28,098	30.3	16,013	17.3	6,177	6.7	1,820	2.0	92,643
Native American	<5	N/C	27	15.9	50	29.4	56	32.9	31	18.2	5	2.9	170
White	127	0.5	836	3.4	4,110	17.0	5,628	23.2	13,184	54.4	353	1.5	24,238
Two or More Races	10	0.6	123	7.0	360	20.6	581	33.3	653	37.4	20	1.1	1,747
Other/Unknown	12	1.0	60	5.0	115	9.6	94	7.8	150	12.5	772	64.2	1,203
Total	14,443	9.8	29,639	20.1	39,056	26.4	29,669	20.1	31,386	21.3	3,491	2.4	147,684

Note: Racial/ethnic categorization has been revised in this report; data from previous year reports may not be comparable.

Numbers fewer than 5 are shown as "<5". Rates are not calculated (N/C) if number is fewer than five.

Source: California Department of Public Health, Center for Health Statistics, OHIR Vital Statistics Section, 2008.

**Percent of Total Live Births
by Parity and by Mother's Race/Ethnicity
Los Angeles County, 2008**



Los Angeles County, 2008													Total Live Births
Mother's Race/Ethnicity	Parity												
	First Live Birth		Second Live Birth		Third Live Birth		Fourth Live Birth		Fifth+ Live Birth		Unknown		
	Number	Percent	Number	Percent	Number	Percent	Number	Percent	Number	Percent	Number	Percent	
African American	4,641	42.1	2,943	26.7	1,786	16.2	900	8.2	733	6.7	13	0.1	11,016
Asian/PI	8,325	49.9	5,775	34.6	1,878	11.3	454	2.7	207	1.2	28	0.2	16,667
Hispanic	32,768	35.4	27,165	29.3	18,826	20.3	8,602	9.3	5,230	5.6	52	0.1	92,643
Native American	57	33.5	49	28.8	30	17.6	17	10.0	17	10.0	<5	N/C	170
White	11,391	47.0	8,146	33.6	3,129	12.9	973	4.0	543	2.2	56	0.2	24,238
Two or More Races	875	50.1	530	30.3	221	12.7	69	3.9	51	2.9	<5	N/C	1,747
Other/Unknown	563	46.8	327	27.2	137	11.4	65	5.4	54	4.5	57	4.7	1,203
Total	58,620	39.7	44,935	30.4	26,007	17.6	11,080	7.5	6,835	4.6	207	0.1	147,684

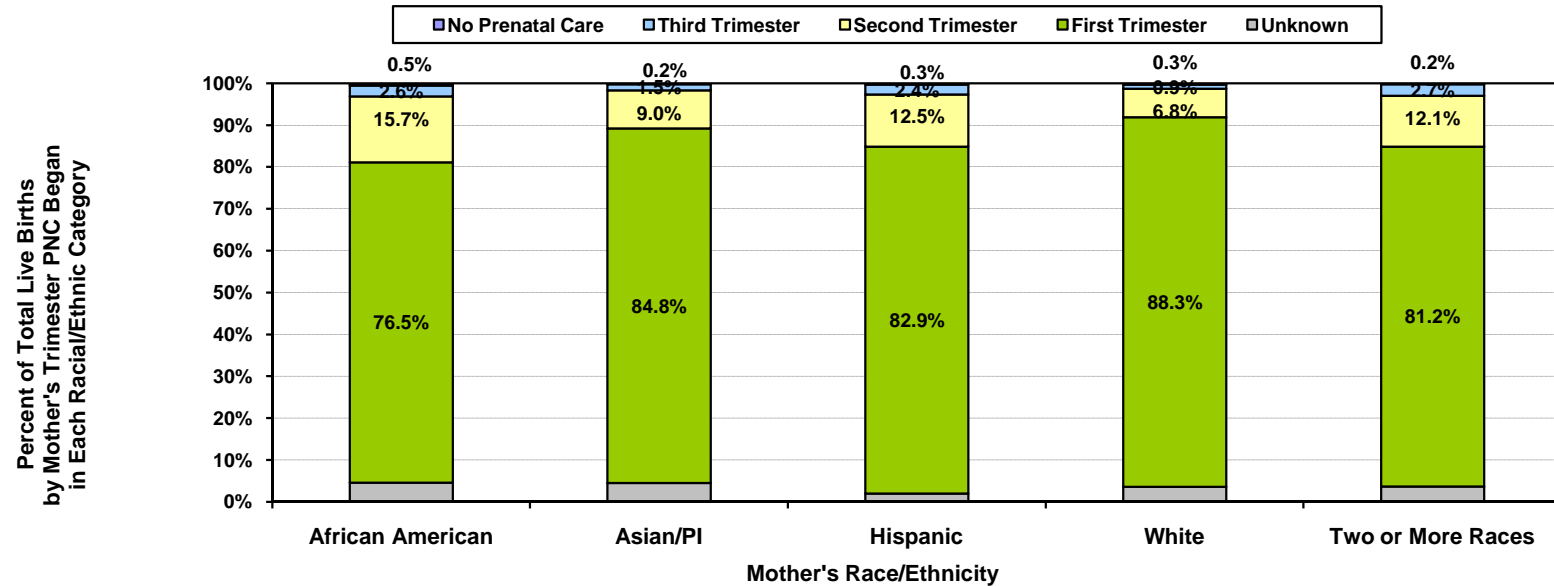
Note: Parity = number of pregnancies resulting in live births to a woman.

Racial/ethnic categorization has been revised in this report; data from previous year reports may not be comparable.

Numbers fewer than 5 are shown as "<5". Rates are not calculated (N/C) if number is fewer than five.

Source: California Department of Public Health, Center for Health Statistics, OHIR Vital Statistics Section, 2008.

**Percent of Total Live Births
by Mother's Trimester Prenatal Care (PNC) Began and by Mother's Race/Ethnicity
Los Angeles County, 2008**



Los Angeles County, 2008											Total Live Births
Mother's Race/Ethnicity	No Prenatal Care		Mother's Trimester Prenatal Care Began						Unknown		
			First		Second		Third				
	Number	Percent	Number	Percent	Number	Percent	Number	Percent	Number	Percent	
African American	56	0.5	8,432	76.5	1,729	15.7	289	2.6	510	4.6	11,016
Asian/PI	27	0.2	14,127	84.8	1,508	9.0	254	1.5	751	4.5	16,667
Hispanic	266	0.3	76,807	82.9	11,571	12.5	2,178	2.4	1,821	2.0	92,643
Native American	<5	N/C	139	81.8	23	13.5	5	2.9	<5	N/C	170
White	71	0.3	21,414	88.3	1,648	6.8	229	0.9	876	3.6	24,238
Two or More Races	<5	N/C	1,419	81.2	212	12.1	48	2.7	64	3.7	1,747
Other/Unknown	6	0.5	913	75.9	100	8.3	21	1.7	163	13.5	1,203
Total	430	0.3	123,251	83.5	16,791	11.4	3,024	2.0	4,188	2.8	147,684

Year 2010 Objective: Increase the proportion of pregnant women who receive prenatal care in the first trimester of pregnancy to 90 percent of live births.

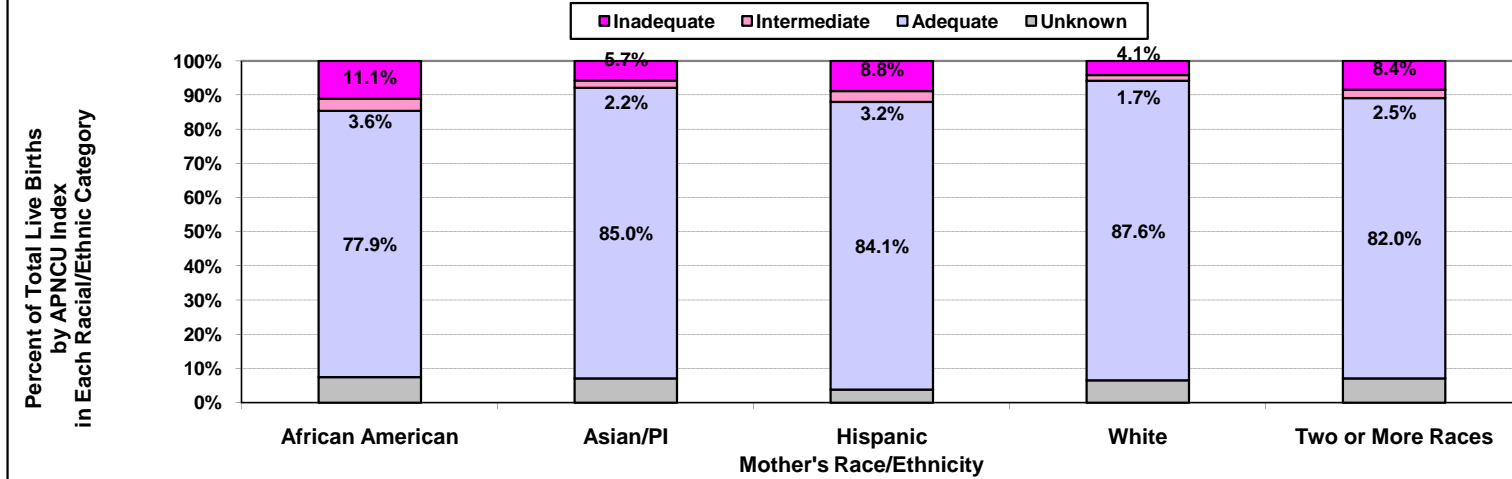
Note: "Trimester Prenatal Care (PNC) Began" excludes the prenatal care experiences of all women whose pregnancies did not result in a live birth.

Racial/ethnic categorization has been revised in this report; data from previous year reports may not be comparable.

Numbers fewer than 5 are shown as "<5". Rates are not calculated (N/C) if number is fewer than five.

Source: California Department of Public Health, Center for Health Statistics, OHIR Vital Statistics Section, 2008.

**Percent of Total Live Births
by Adequacy of Prenatal Care Utilization Index and by Mother's Race/Ethnicity
Los Angeles County, 2008**



Los Angeles County, 2008								
Mother's Race/Ethnicity	Adequacy of Prenatal Care Utilization Index							
	Adequate		Intermediate		Inadequate		Unknown	
	Number	Percent	Number	Percent	Number	Percent	Number	Percent
African American	8,582	77.9	392	3.6	1,219	11.1	823	7.5
Asian/PI	14,163	85.0	367	2.2	944	5.7	1,193	7.2
Hispanic	77,957	84.1	2,971	3.2	8,163	8.8	3,552	3.8
Native American	143	84.1	5	2.9	15	8.8	7	4.1
White	21,232	87.6	414	1.7	1,001	4.1	1,591	6.6
Two or More Races	1,432	82.0	43	2.5	147	8.4	125	7.2
Other/Unknown	872	72.5	25	2.1	79	6.6	227	18.9
Total	124,381	84.2	4,217	2.9	11,568	7.8	7,518	5.1

Total Live Births
11,016
16,667
92,643
170
24,238
1,747
1,203
147,684

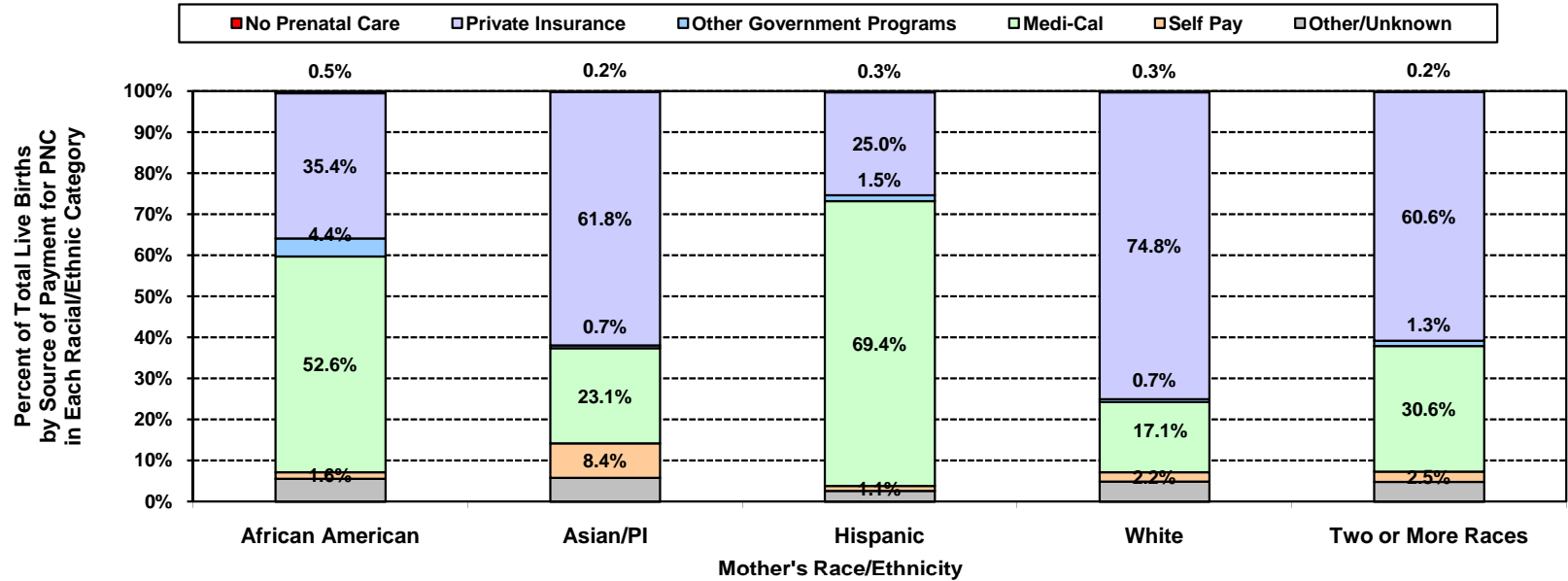
Year 2010 Objective: Increase the proportion of pregnant women who receive early and adequate prenatal care to 90 percent of live births.

Note: The APNCU Index measures prenatal care utilization, which includes consideration of the month prenatal care began and the number of prenatal care visits during the time mothers actually received prenatal care. This utilization index is based on the recommendations established by the American College of Obstetrics and Gynecologists (ACOG). Appendix A contains the specific criteria for timing and number of prenatal care visits that are used to assign adequacy categories.

Racial/ethnic categorization has been revised in this report; data from previous year reports may not be comparable.

Source: California Department of Public Health, Center for Health Statistics, OHIR Vital Statistics Section, 2008.

**Percent of Total Live Births
by Source of Payment for Prenatal Care (PNC) and by Mother's Race/Ethnicity
Los Angeles County, 2008**



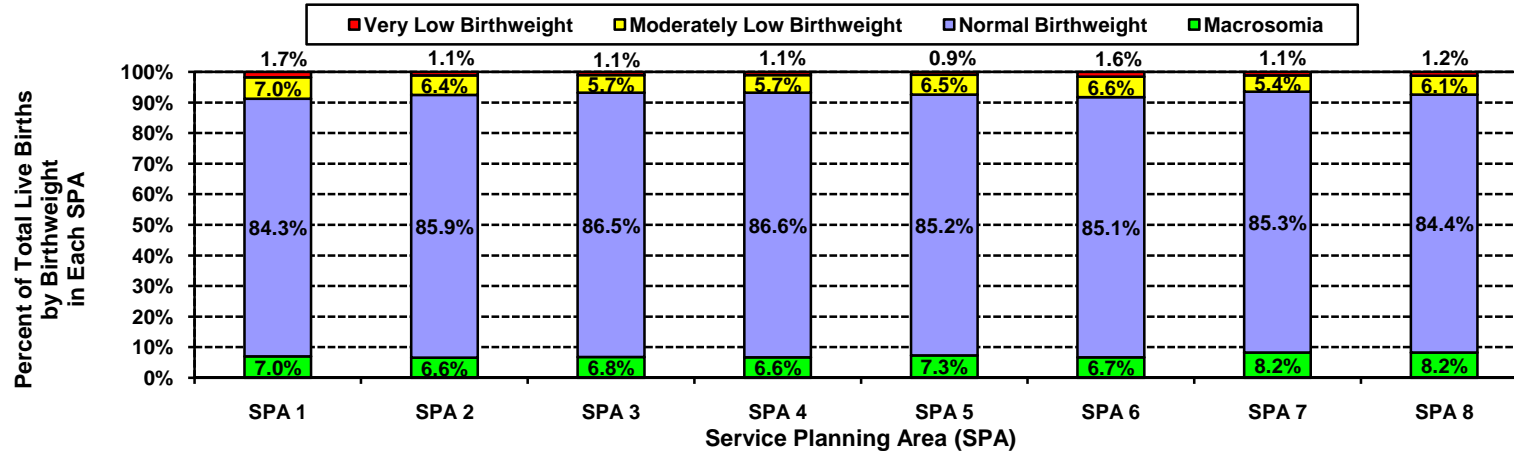
Los Angeles County, 2008													Total Live Births
Mother's Race/Ethnicity	Source of Payment for Prenatal Care												
	No Prenatal Care		Private Insurance		Other Government Programs		Medi-Cal		Self Pay		Other/Unknown		
	Number	Percent	Number	Percent	Number	Percent	Number	Percent	Number	Percent	Number	Percent	
African American	56	0.5	3,896	35.4	483	4.4	5,796	52.6	177	1.6	608	5.5	11,016
Asian/PI	27	0.2	10,304	61.8	112	0.7	3,856	23.1	1,403	8.4	965	5.8	16,667
Hispanic	266	0.3	23,185	25.0	1,389	1.5	64,310	69.4	1,060	1.1	2,433	2.6	92,643
Native American	<5	N/C	76	44.7	<5	N/C	80	47.1	<5	N/C	11	6.5	170
White	71	0.3	18,125	74.8	166	0.7	4,148	17.1	540	2.2	1,188	4.9	24,238
Two or More Races	<5	N/C	1,058	60.6	23	1.3	534	30.6	44	2.5	84	4.8	1,747
Other/Unknown	6	0.5	736	61.2	5	0.4	307	25.5	31	2.6	118	9.8	1,203
Total	430	0.3	57,380	38.9	2,180	1.5	79,031	53.5	3,256	2.2	5,407	3.7	147,684

Note: Racial/ethnic categorization has been revised in this report; data from previous year reports may not be comparable.

Numbers fewer than 5 are shown as "<5". Rates are not calculated (N/C) if number is fewer than five.

Source: California Department of Public Health, Center for Health Statistics, OHIR Vital Statistics Section, 2008.

**Percent of Total Live Births
by Birthweight and by Service Planning Area (SPA)
Los Angeles County, 2008**



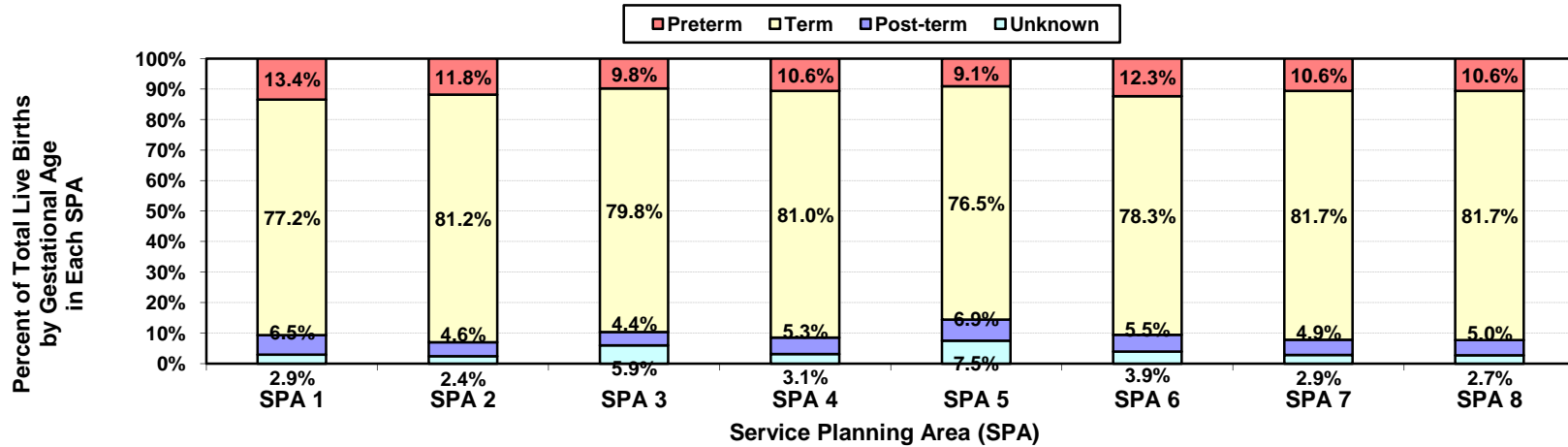
Los Angeles County, 2008											
Service Planning Area (SPA)	Very Low Birthweight		Moderately Low Birthweight		Normal Birthweight		Macrosomia		Birthweight Unknown		Total Live Births
	0 to 1,499 grams		1,500 to 2,499 grams		2,500 to 3,999 grams		4,000+ grams				
	Number	Percent	Number	Percent	Number	Percent	Number	Percent	Number	Percent	
1 - Antelope Valley	106	1.7	426	7.0	5,131	84.3	424	7.0	<5	N/C	6,087
2 - San Fernando	312	1.1	1,805	6.4	24,261	85.9	1,851	6.6	<5	N/C	28,229
3 - San Gabriel	264	1.1	1,430	5.7	21,550	86.5	1,683	6.8	<5	N/C	24,927
4 - Metro	170	1.1	909	5.7	13,853	86.6	1,062	6.6	<5	N/C	15,994
5 - West	62	0.9	454	6.5	5,940	85.2	512	7.3	<5	N/C	6,968
6 - South	357	1.6	1,486	6.6	19,032	85.1	1,497	6.7	<5	N/C	22,372
7 - East	239	1.1	1,119	5.4	17,767	85.3	1,709	8.2	<5	N/C	20,834
8 - South Bay	273	1.2	1,344	6.1	18,478	84.4	1,796	8.2	<5	N/C	21,891
Unknown	11	2.9	33	8.6	315	82.5	22	5.8	<5	N/C	382
Total	1,794	1.2	9,006	6.1	126,327	85.5	10,556	7.1	<5	N/C	147,684

Note: The mothers' residential zip codes were used to allocate live births to corresponding SPA. SPA corresponding to each zip code (published in 2003) were designated using the zip code centroids. Published statistics based on other corresponding tables may vary when compared. Records that cannot be assigned to any SPA are classified as 'Unknown'.

Numbers fewer than 5 are shown as "<5". Rates are not calculated (N/C) if number is fewer than five.

Source: California Department of Public Health, Center for Health Statistics, OHIR Vital Statistics Section, 2008.

**Percent of Total Live Births
by Gestational Age and by Service Planning Area (SPA)
Los Angeles County, 2008**



Los Angeles County, 2008											Total Live Births
Service Planning Area (SPA)	Very Preterm		Moderate Preterm		Term		Post-term		Gestational Age Unknown		
	< 32 weeks		32-36 weeks		37-41 weeks		42+ weeks				
	Number	Percent	Number	Percent	Number	Percent	Number	Percent	Number	Percent	
1 - Antelope Valley	140	2.3	677	11.1	4,700	77.2	395	6.5	175	2.9	6,087
2 - San Fernando	415	1.5	2,908	10.3	22,930	81.2	1,297	4.6	679	2.4	28,229
3 - San Gabriel	306	1.2	2,137	8.6	19,896	79.8	1,109	4.4	1,479	5.9	24,927
4 - Metro	241	1.5	1,452	9.1	12,949	81.0	850	5.3	502	3.1	15,994
5 - West	80	1.1	554	8.0	5,331	76.5	479	6.9	524	7.5	6,968
6 - South	456	2.0	2,292	10.2	17,520	78.3	1,228	5.5	876	3.9	22,372
7 - East	299	1.4	1,903	9.1	17,020	81.7	1,018	4.9	594	2.9	20,834
8 - South Bay	368	1.7	1,957	8.9	17,888	81.7	1,098	5.0	581	2.7	21,892
Unknown	15	3.9	48	12.6	256	67.2	25	6.6	37	9.7	381
Total	2,320	1.6	13,928	9.4	118,490	80.2	7,499	5.1	5,447	3.7	147,684

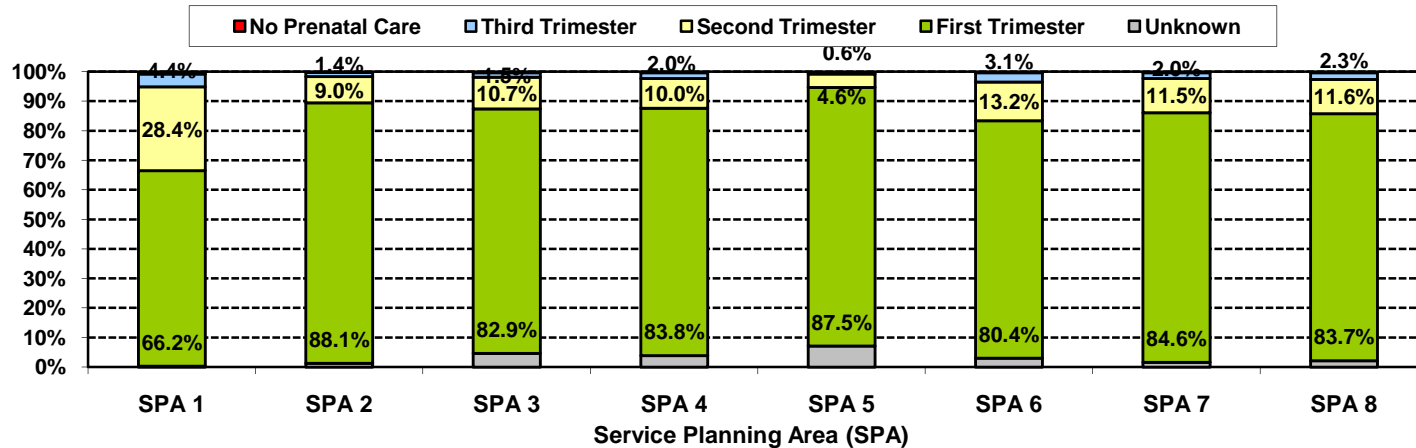
Note: Unknown includes those weeks of gestation not stated, less than 17 weeks of gestation, and 53 weeks or more gestation. These categories reflect inaccuracies rather than actual gestation periods. Gestation is calculated from reported date of last menses.

The mothers' residential zip codes were used to allocate live births to corresponding SPA. SPA corresponding to each zip code (published in 2003) were designated using the zip code centroids. Published statistics based on other corresponding tables may vary when compared. Records that cannot be assigned to any SPA are classified as 'Unknown'.

Source: California Department of Public Health, Center for Health Statistics, OHIR Vital Statistics Section, 2008.

**Percent of Total Live Births
by Mother's Trimester Prenatal Care (PNC) Began and by Service Planning Area (SPA)
Los Angeles County, 2008**

Percent of Total Live Births
by Mother's Trimester PNC Began
in Each SPA



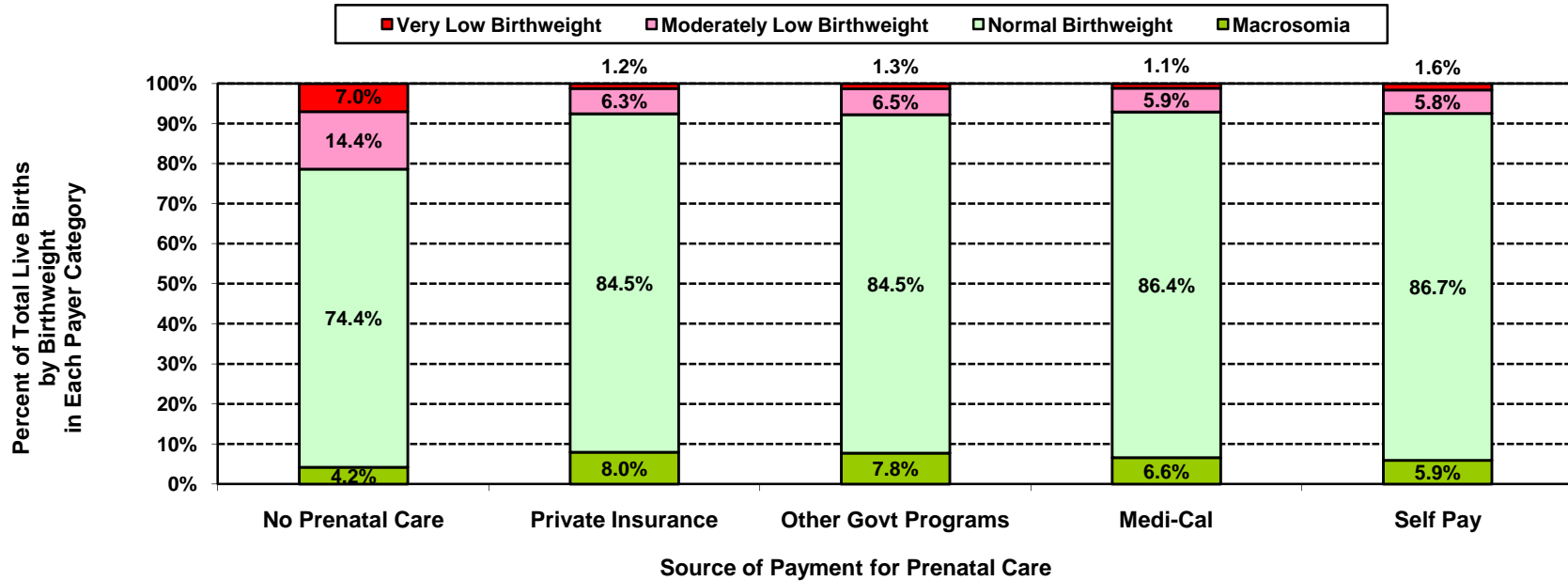
Los Angeles County, 2008											
Service Planning Area (SPA)	No Prenatal Care		Mother's Trimester Prenatal Care Began						Unknown		Total Live Births
			First		Second		Third				
	Number	Percent	Number	Percent	Number	Percent	Number	Percent	Number	Percent	
1 - Antelope Valley	45	0.7	4,029	66.2	1,728	28.4	266	4.4	19	0.3	6,087
2 - San Fernando	60	0.2	24,881	88.1	2,528	9.0	385	1.4	375	1.3	28,229
3 - San Gabriel	84	0.3	20,657	82.9	2,662	10.7	371	1.5	1,153	4.6	24,927
4 - Metro	47	0.3	13,400	83.8	1,605	10.0	319	2.0	623	3.9	15,994
5 - West	<5	N/C	6,098	87.5	321	4.6	44	0.6	501	7.2	6,968
6 - South	62	0.3	17,977	80.4	2,957	13.2	697	3.1	679	3.0	22,372
7 - East	57	0.3	17,629	84.6	2,399	11.5	419	2.0	330	1.6	20,834
8 - South Bay	62	0.3	18,318	83.7	2,540	11.6	502	2.3	470	2.1	21,892
Unknown	9	2.4	262	68.8	51	13.4	21	5.5	38	10.0	381
Total	430	0.3	123,251	83.5	16,791	11.4	3,024	2.0	4,188	2.8	147,684

Note: "Trimester Prenatal Care (PNC) Began" excludes the prenatal care experiences of all women whose pregnancies did not result in a live birth. The mothers' residential zip codes were used to allocate live births to corresponding SPA. SPA corresponding to each zip code (published in 2003) were designated using the zip code centroids. Published statistics based on other corresponding tables may vary when compared. Records that cannot be assigned to any SPA are classified as 'Unknown'.

Numbers fewer than 5 are shown as "<5". Rates are not calculated (N/C) if number is fewer than five.

Source: California Department of Public Health, Center for Health Statistics, OHIR Vital Statistics Section, 2008.

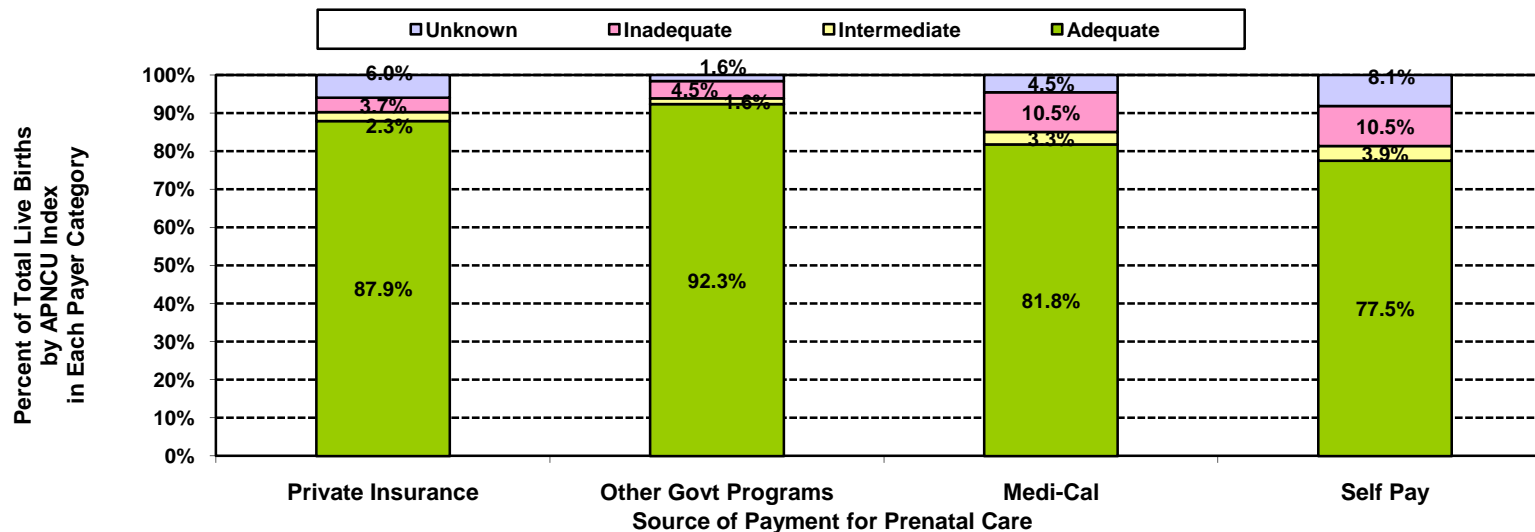
**Percent of Total Live Births
by Birthweight and by Source of Payment for Prenatal Care (PNC)
Los Angeles County, 2008**



Los Angeles County, 2008											
Source of Payment for Prenatal Care	Very Low Birthweight		Moderately Low Birthweight		Normal Birthweight		Macrosomia		Birthweight Unknown		Total Live Births
	0 to 1,499 grams		1,500 to 2,499 grams		2,500 to 3,999 grams		4,000+ grams				
	Number	Percent	Number	Percent	Number	Percent	Number	Percent	Number	Percent	
No Prenatal Care	30	7.0	62	14.4	320	74.4	18	4.2	<5	N/C	430
Private Insurance	716	1.2	3,609	6.3	48,486	84.5	4,569	8.0	<5	N/C	57,380
Other Govt Programs	28	1.3	141	6.5	1,842	84.5	169	7.8	<5	N/C	2,180
Medi-Cal	894	1.1	4,691	5.9	68,254	86.4	5,192	6.6	<5	N/C	79,031
Self Pay	53	1.6	189	5.8	2,822	86.7	192	5.9	<5	N/C	3,256
Other/Unknown	73	1.4	314	5.8	4,603	85.1	416	7.7	<5	N/C	5,407
Total	1,794	1.2	9,006	6.1	126,327	85.5	10,556	7.1	<5	N/C	147,684

Note: Numbers fewer than 5 are shown as "<5". Rates are not calculated (N/C) if number is fewer than five.
Source: California Department of Public Health, Center for Health Statistics, OHIR Vital Statistics Section, 2008.

**Percent of Total Live Births by Adequacy of Prenatal Care Utilization Index
and by Source of Payment for Prenatal Care (PNC)
Los Angeles County, 2008**



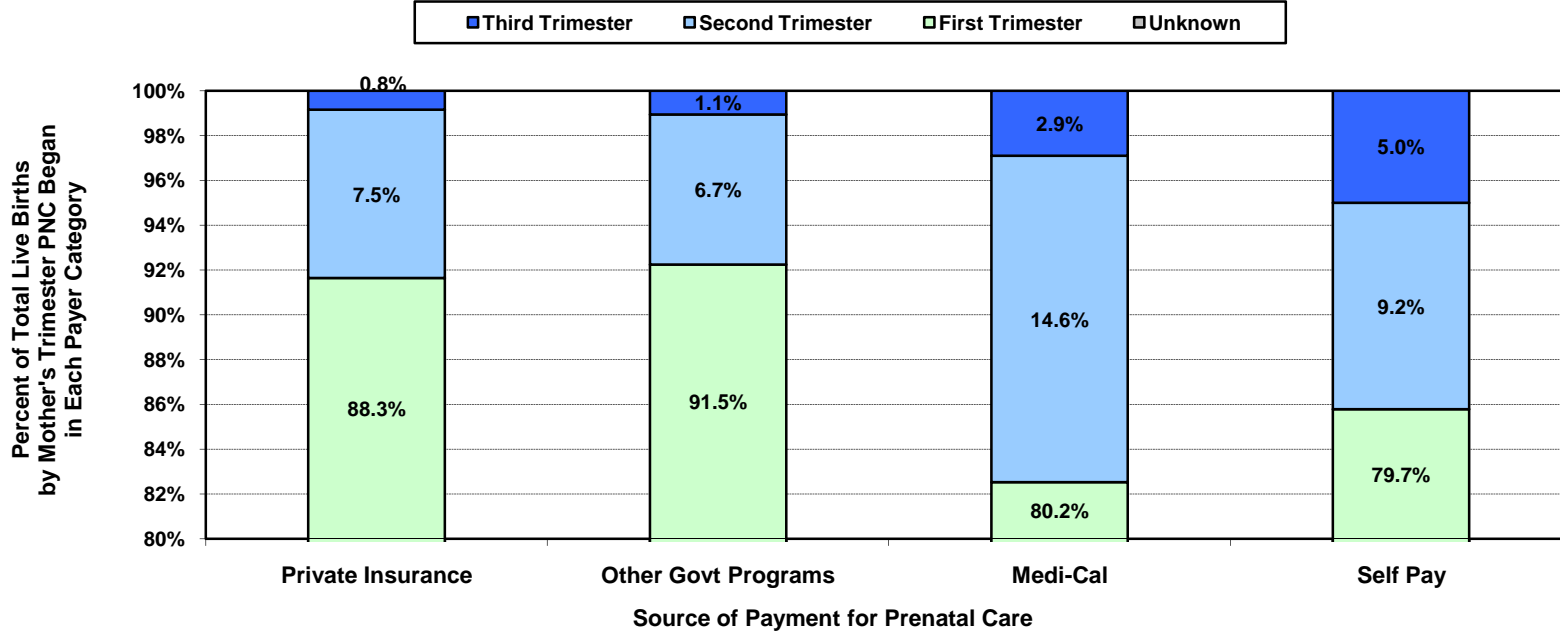
Los Angeles County, 2008									
Source of Payment for Prenatal Care	Adequacy of Prenatal Care Utilization Index						Unknown		Total Live Births
	Adequate		Intermediate		Inadequate		Number	Percent	
	Number	Percent	Number	Percent	Number	Percent			
No Prenatal Care	<5	N/C	<5	N/C	430	100.0	<5	N/C	430
Private Insurance	50,455	87.9	1,340	2.3	2,150	3.7	3,435	6.0	57,380
Other Govt Programs	2,013	92.3	34	1.6	99	4.5	34	1.6	2,180
Medi-Cal	64,608	81.8	2,579	3.3	8,285	10.5	3,559	4.5	79,031
Self Pay	2,522	77.5	128	3.9	342	10.5	264	8.1	3,256
Other/Unknown	4,783	88.5	136	2.5	262	4.8	226	4.2	5,407
Total	124,381	84.2	4,217	2.9	11,568	7.8	7,518	5.1	147,684

Note: The APNCU Index measures prenatal care utilization, which includes consideration of the month prenatal care began and the number of prenatal care visits during the time mothers actually received prenatal care. This utilization index is based on the recommendations established by the American College of Obstetrics and Gynecologists (ACOG). Appendix A contains the specific criteria for timing and number of prenatal care visits that are used to assign adequacy categories.

Numbers fewer than 5 are shown as "<5". Rates are not calculated (N/C) if number is fewer than five.

Source: California Department of Public Health, Center for Health Statistics, OHIR Vital Statistics Section, 2008.

**Percent of Total Live Births by Mother's Trimester Prenatal Care (PNC) Began
and by Source of Payment for Prenatal Care (PNC)
Los Angeles County, 2008**



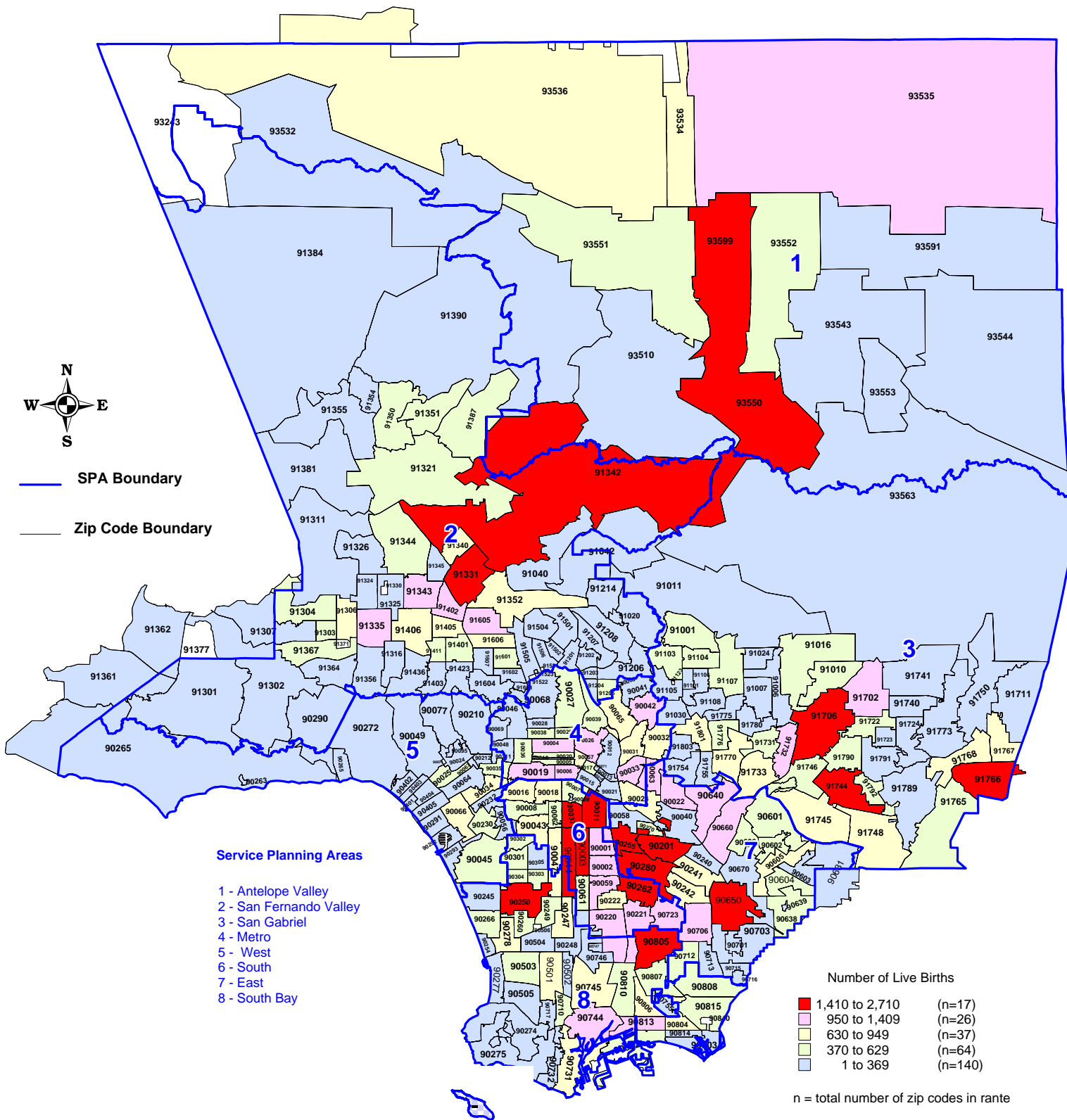
Los Angeles County, 2008											
Source of Payment for Prenatal Care	No Prenatal Care		Mother's Trimester Prenatal Care Began						Unknown		Total Live Births
	Number	Percent	First		Second		Third		Number	Percent	
			Number	Percent	Number	Percent	Number	Percent			
No Prenatal Care	430	100.0	<5	N/C	<5	N/C	<5	N/C	<5	N/C	430
Private Insurance	<5	N/C	50,671	88.3	4,308	7.5	485	0.8	1,916	3.3	57,380
Other Govt Programs	<5	N/C	1,995	91.5	146	6.7	23	1.1	16	0.7	2,180
Medi-Cal	<5	N/C	63,344	80.2	11,514	14.6	2,298	2.9	1,875	2.4	79,031
Self Pay	<5	N/C	2,594	79.7	300	9.2	163	5.0	199	6.1	3,256
Other/Unknown	<5	N/C	4,647	85.9	523	9.7	55	1.0	182	3.4	5,407
Total	430	0.3	123,251	83.5	16,791	11.4	3,024	2.0	4,188	2.8	147,684

Note: "Trimester Prenatal Care (PNC) Began" excludes the prenatal care experiences of all women whose pregnancies did not result in a live birth. Numbers fewer than 5 are shown as "<5". Rates are not calculated (N/C) if number is fewer than five.

Source: California Department of Public Health, Center for Health Statistics, OHIR Vital Statistics Section, 2008.

Number of Live Births by Zip Code* and Service Planning Area (SPA)

Los Angeles County, 2008



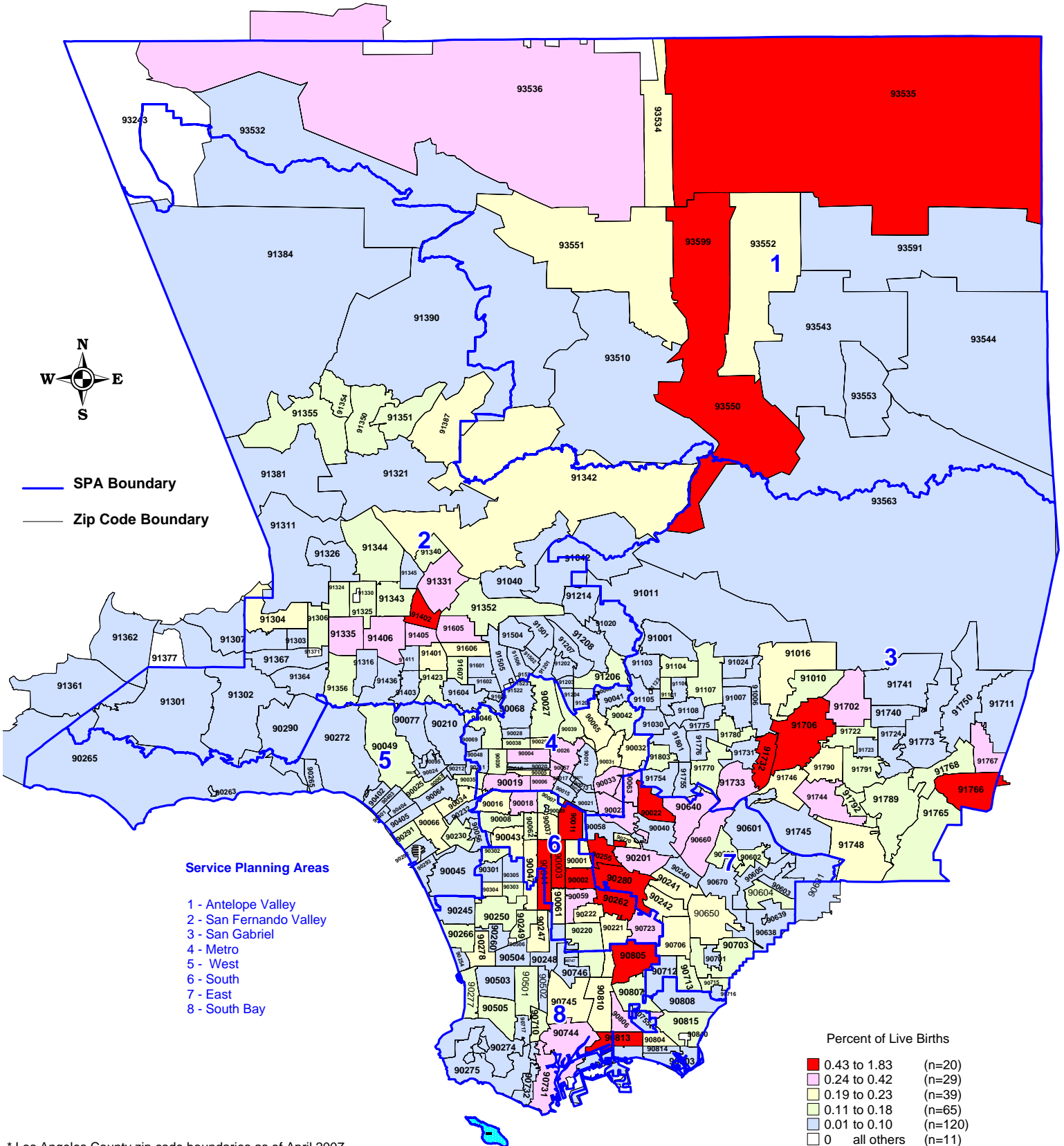
*Los Angeles County zip code boundaries as of April 2007

Total number of live births in Los Angeles County 2008 = 147,684

Source : California Department of Public Health, Center for Health Statistics, OHIR Vital Statistics Section, 2008

Percent of Live Births by Zip Code* and Service Planning Area (SPA)

Los Angeles County, 2008



* Los Angeles County zip code boundaries as of April 2007

Total number of live births in Los Angeles County in 2008 = 147,684

Source: California Department of Public Health, Center for Health Statistics, OHIR Vital Statistics Section, 2008

n = total number of zip codes in range