

Domestic Violence

DOMESTIC VIOLENCE

INDICATOR: Hospitalizations of Females Ages 13 and Over Due to Assaultive Injuries by Spouse or Partner

DEFINITION: The rate of hospitalizations due to assaultive injuries by spouse or partner (E967.3) per 100,000 females (13 and over)

NUMERATOR: Total number of females (13 and over) hospitalized due to assaultive injuries by spouse or partner (E967.3), by place of residence, in a calendar year

DENOMINATOR: The total female population (13 and over), by place of residence, in a calendar year

HEALTHY PEOPLE 2010 OBJECTIVE: None

Domestic Violence: Hospitalization due to violent injuries among females (ages 13 and over)

| Year | California | | | | Los Angeles County | | | |
|------|------------|------|-------------------------|-------|--------------------|------|-------------------------|-------|
| | Number | Rate | 95% Confidence Interval | | Number | Rate | 95% Confidence Interval | |
| | | | Lower | Upper | | | Lower | Upper |
| 1997 | 199 | 1.5 | 1.3 | 1.7 | 38 | 1.0 | 0.7 | 1.4 |
| 1998 | 157 | 1.2 | 1.0 | 1.4 | 37 | 1.0 | 0.7 | 1.3 |
| 1999 | 141 | 1.0 | 0.9 | 1.2 | 38 | 1.0 | 0.7 | 1.3 |
| 2000 | 156 | 1.1 | 1.0 | 1.3 | 33 | 0.9 | 0.6 | 1.1 |
| 2001 | 120 | 0.9 | 0.7 | 1.0 | 31 | 0.8 | 0.5 | 1.1 |
| 2002 | 90 | 0.6 | 0.5 | 0.8 | 21 | 0.5 | 0.3 | 0.8 |
| 2003 | 103 | 0.7 | 0.6 | 0.8 | 26 | 0.6 | 0.4 | 0.9 |
| 2004 | 124 | 0.8 | 0.7 | 1.0 | 23 | 0.6 | 0.3 | 0.8 |
| 2005 | 129 | 0.9 | 0.7 | 1.0 | 30 | 0.7 | 0.5 | 1.0 |
| 2006 | 102 | 0.7 | 0.5 | 0.8 | 18 | 0.4 | 0.2 | 0.6 |

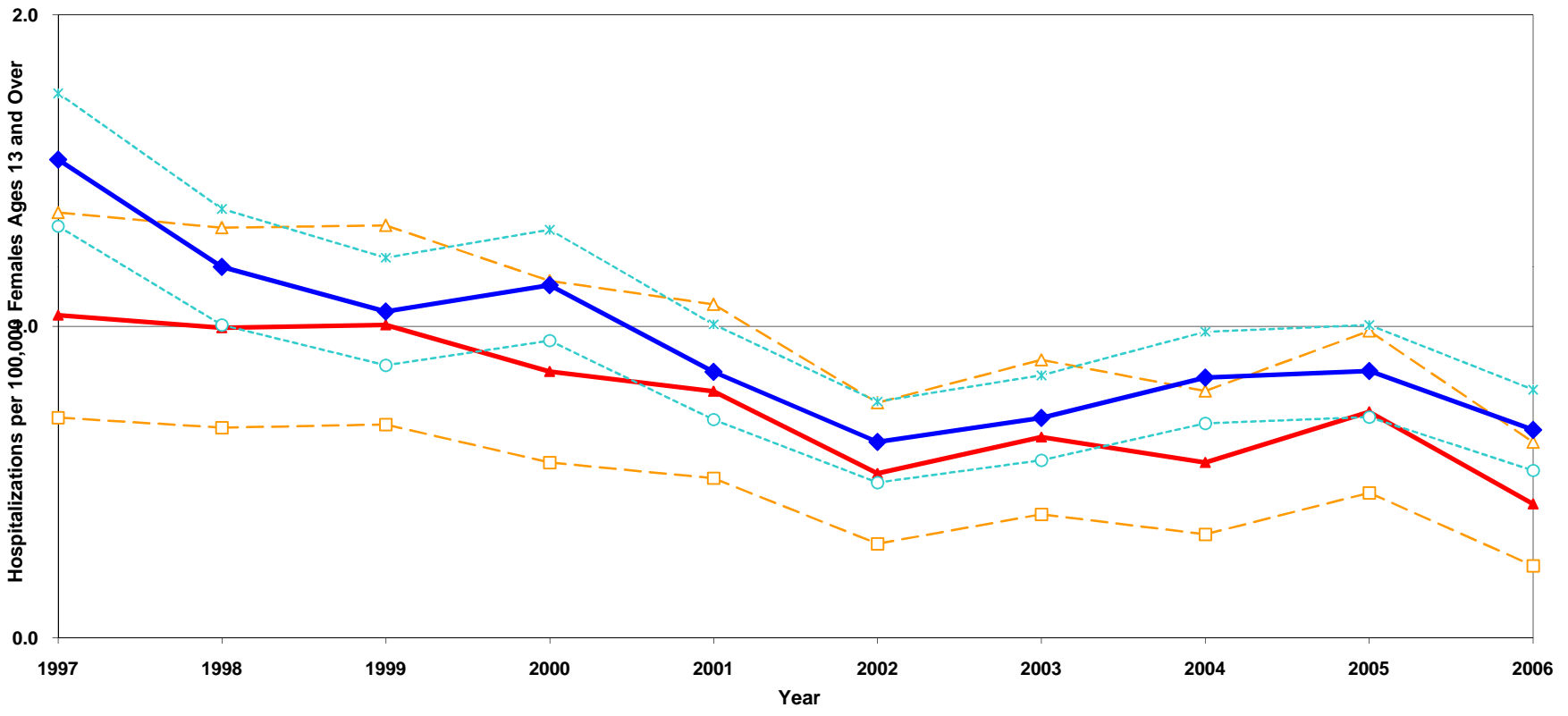
| Denominator: Total Female Population Ages 13 and Over | | |
|---|------------|-----------|
| Year | California | LA County |
| 1997 | 12,960,628 | 3,665,898 |
| 1998 | 13,178,274 | 3,714,364 |
| 1999 | 13,454,235 | 3,781,495 |
| 2000 | 13,773,458 | 3,860,107 |
| 2001 | 14,046,983 | 3,914,416 |
| 2002 | 14,302,755 | 3,971,631 |
| 2003 | 14,572,312 | 4,029,686 |
| 2004 | 14,830,182 | 4,086,034 |
| 2005 | 15,052,031 | 4,133,467 |
| 2006 | 15,280,183 | 4,184,581 |

Note: ICD-9-CM Diagnosis E967.3 - Perpetrator of child or adult abuse by spouse or partner or by ex-spouse or ex-partner.

Data not available for 2007 as of retrieval date.

Sources: California Office of Statewide Health Planning & Development, Patient Discharge Data. Prepared by California Department of Public Health, Epidemiology & Prevention for Injury Control (EPIC) Branch, Injury Surveillance & Epidemiology Section. Data retrieved on September 22, 2008.
 Denominator data: California Department of Finance, "Race/Ethnic Population with Age & Sex Detail, 1990-1999", Sacramento, California, May 2004.
 Denominator data: California Department of Finance, "Race/Ethnic Population with Age & Sex Detail, 2000-2050", Sacramento, California, July 2007.

Hospitalization per 100,000 Females Ages 13 and Over Due to Assaultive Injuries by Spouse or Partner California vs. Los Angeles County, 1997 - 2006



Source: California Office of Statewide Health Planning & Development, Patient Discharge Data. Prepared by California Department of Public Health, Epidemiology & Prevention for Injury Control (EPIC) Branch, Injury Surveillance & Epidemiology Section. Data retrieved on September 22, 2008.
 Denominator data: California Department of Finance, "Race/Ethnic Population with Age & Sex Detail, 1990-1999", Sacramento, California, May 2004.
 Denominator data: California Department of Finance, "Race/Ethnic Population with Age & Sex Detail, 2000-2050", Sacramento, California, July 2007.

DOMESTIC VIOLENCE

INDICATOR: Deaths Due to Assaultive Injuries (Homicides) among Adolescent and Adult Females Ages 10-44

DEFINITION: The three year average rate per 100,000 females (ages 10-44) of deaths due to homicide (E-Codes 960.0-969.0)

NUMERATOR: The number of deaths due to homicide among females (ages 10-44), by place of residence (three year average)

DENOMINATOR: The total female population age 10 through 44 for the middle year of the three year time period of interest

HEALTHY PEOPLE 2010 OBJECTIVE:

Reduce homicides to no more than 3.2 per 100,000 people.
(Objective 15-32) - (include all age groups)

Risk Factors:

Low income; gender (male); age (teens, young adults); race/ethnicity (African American, Hispanic); history of abuse (victim of spousal/intimate, or child abuse); easy access to firearms; presence of firearms at home

| Numerator: Homicides to Females Ages 10-44 | | |
|--|------------|-----------|
| Year | California | LA County |
| 1997 | 297 | 90 |
| 1998 | 280 | 112 |
| 1999 | 253 | 87 |
| 2000 | 234 | 96 |
| 2001 | 272 | 95 |
| 2002 | 265 | 106 |
| 2003 | 254 | 82 |
| 2004 | 219 | 83 |
| 2005 | 230 | 90 |
| 2006 | 240 | 89 |
| 2007 | 241 | 74 |

Domestic Violence: Deaths due to homicide among females (ages 10 to 44 years)

| Three-Year Average | California | | | | LA County | | | |
|--------------------|------------|------|-------------------------|-------|-----------|------|-------------------------|-------|
| | Number | Rate | 95% Confidence Interval | | Number | Rate | 95% Confidence Interval | |
| | | | Lower | Upper | | | Lower | Upper |
| 1997-1999 | 277 | 3.2 | 2.8 | 3.6 | 96 | 3.8 | 3.1 | 4.6 |
| 1998-2000 | 256 | 2.9 | 2.6 | 3.3 | 98 | 3.9 | 3.1 | 4.6 |
| 1999-2001 | 253 | 2.9 | 2.5 | 3.2 | 93 | 3.6 | 2.9 | 4.4 |
| 2000-2002 | 257 | 2.9 | 2.5 | 3.2 | 99 | 3.9 | 3.1 | 4.6 |
| 2001-2003 | 264 | 2.9 | 2.6 | 3.3 | 94 | 3.7 | 2.9 | 4.4 |
| 2002-2004 | 246 | 2.7 | 2.4 | 3.0 | 90 | 3.5 | 2.8 | 4.2 |
| 2003-2005 | 234 | 2.5 | 2.2 | 2.9 | 85 | 3.3 | 2.6 | 4.0 |
| 2004-2006 | 230 | 2.5 | 2.2 | 2.8 | 87 | 3.4 | 2.7 | 4.1 |
| 2005-2007 | 241 | 2.6 | 2.3 | 2.9 | 74 | 2.8 | 2.2 | 3.5 |

| Denominator: Total Female Population Ages 10-44 | | |
|---|------------|-----------|
| Year | California | LA County |
| 1997 | 8,574,774 | 2,494,651 |
| 1998 | 8,668,173 | 2,519,515 |
| 1999 | 8,767,969 | 2,546,296 |
| 2000 | 8,858,231 | 2,561,815 |
| 2001 | 8,975,017 | 2,570,351 |
| 2002 | 9,062,923 | 2,578,717 |
| 2003 | 9,147,004 | 2,585,121 |
| 2004 | 9,216,542 | 2,589,845 |
| 2005 | 9,252,659 | 2,589,394 |
| 2006 | 9,299,804 | 2,594,730 |
| 2007 | 9,333,359 | 2,596,875 |

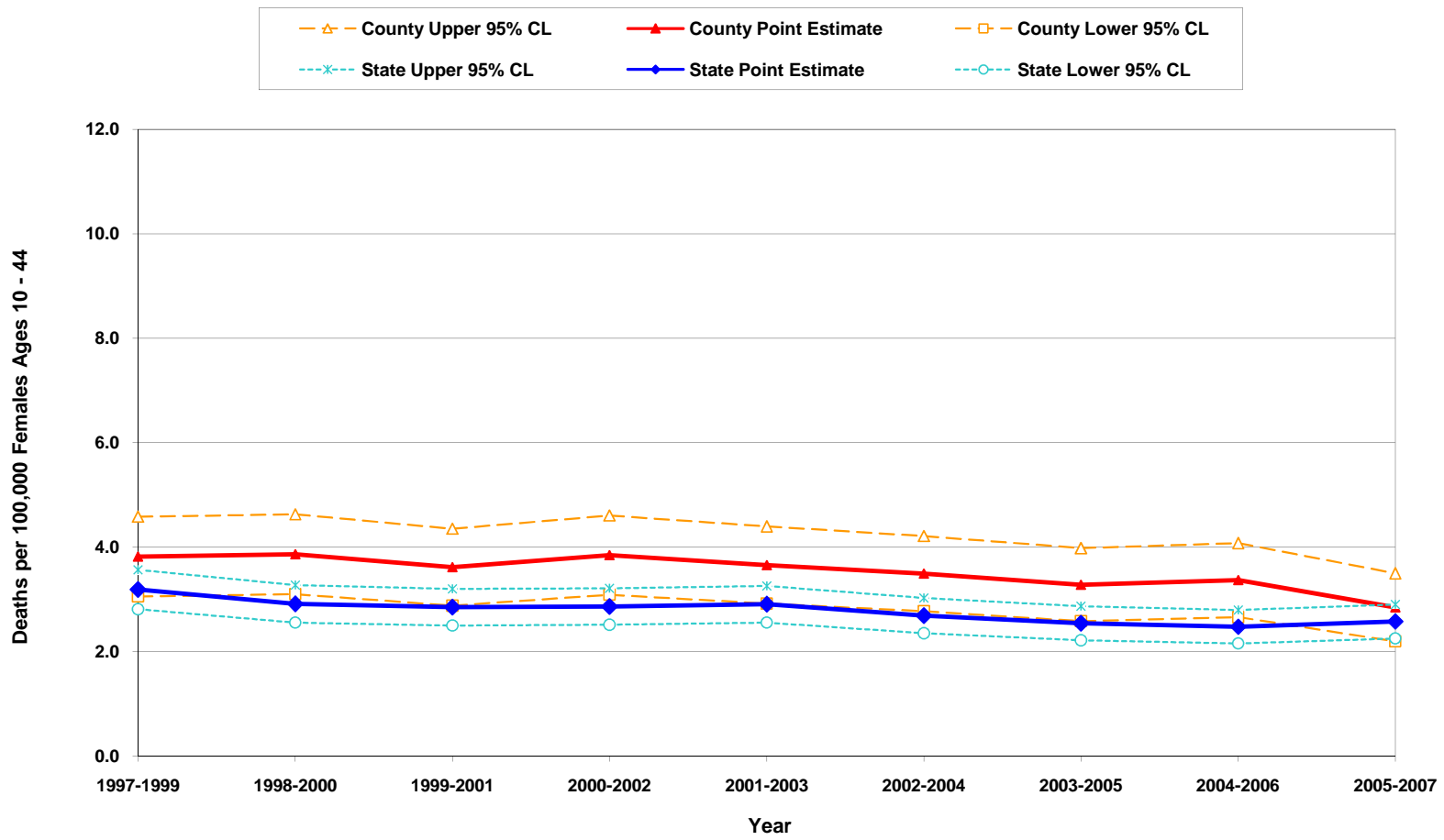
Note: Because there is no domestic violence-specific external cause of injury (E-Code) in the current International Classification of Diseases (ICD) codebook, the numerator in this template reflects deaths due to all types of assaults except data for California 2000. Prior to 1999, ICD-9 codes E960-E969 were used; after 1999, ICD-10 codes U01-U02, X85-Y09 and Y87.1 were used. Data from California Department of Public Health, Epidemiology and Prevention for Injury Control (EPIC) Branch does not include ICD-10 code Y87.1 for assault (homicide) by all other and unspecified means and their sequelae.

Sources: California Department of Public Health, Center for Health Statistics, OHIR Vital Statistics Section, 1994-2005

Denominator data: California Department of Finance, "Race/Ethnic Population with Age & Sex Detail, 1970-2050", Sacramento, California, May 2004.

Denominator data: California Department of Finance, "Race/Ethnic Population with Age & Sex Detail, 2000-2050", Sacramento, California, July 2007.

**Deaths Due to Assaultive Injuries (Homicides)
per 100,000 Females Ages 10 to 44
California vs. Los Angeles County
Three-Year Averages, 1997-2007**



Denominator data: California Department of Finance, "Race/Ethnic Population with Age & Sex Detail, 2000-2050", Sacramento, California, July 2007.

DOMESTIC VIOLENCE

INDICATOR: Domestic Violence-Related Calls for Assistance

DEFINITION: The rate per 1,000 adult population (ages 18 and over) of domestic violence calls to law enforcement agencies

NUMERATOR: Total domestic violence-related calls for assistance to law enforcement agencies, by place of residence, in a calendar year

DENOMINATOR: The total adult population (ages 18 and over), by place of residence, in a calendar year

HEALTHY PEOPLE 2010 OBJECTIVE:

Reduce physical violence directed at women by male partner to no more than 27 per 1,000 couples. (Objective 7.5)

Domestic Violence-related calls for assistance in the adult population (ages 18 and over)

| Year | California | | | | Los Angeles County | | | |
|------|-----------------|------|-------------------------|-------|--------------------|------|-------------------------|-------|
| | Number of Calls | Rate | 95% Confidence Interval | | Number of Calls | Rate | 95% Confidence Interval | |
| | | | Lower | Upper | | | Lower | Upper |
| 1998 | 196,832 | 8.3 | 8.3 | 8.4 | 62,278 | 9.4 | 9.4 | 9.5 |
| 1999 | 186,406 | 7.7 | 7.7 | 7.7 | 59,834 | 8.9 | 8.8 | 9.0 |
| 2000 | 196,880 | 7.9 | 7.9 | 8.0 | 60,960 | 8.8 | 8.8 | 8.9 |
| 2001 | 198,031 | 7.8 | 7.8 | 7.9 | 59,661 | 8.5 | 8.5 | 8.6 |
| 2002 | 196,569 | 7.6 | 7.6 | 7.7 | 56,452 | 7.9 | 7.9 | 8.0 |
| 2003 | 194,288 | 7.4 | 7.4 | 7.4 | 52,790 | 7.3 | 7.3 | 7.4 |
| 2004 | 186,439 | 7.0 | 7.0 | 7.0 | 48,041 | 6.6 | 6.5 | 6.7 |
| 2005 | 181,362 | 6.7 | 6.7 | 6.7 | 45,684 | 6.2 | 6.2 | 6.3 |
| 2006 | 176,299 | 6.4 | 6.4 | 6.5 | 43,508 | 5.9 | 5.8 | 5.9 |
| 2007 | 174,649 | 6.3 | 6.3 | 6.3 | 43,416 | 5.8 | 5.8 | 5.9 |

| Denominator: Total Adult Population Ages 18 and Over | | |
|--|------------|-----------|
| Year | California | LA County |
| 1998 | 23,651,798 | 6,600,528 |
| 1999 | 24,172,144 | 6,727,543 |
| 2000 | 24,796,813 | 6,888,237 |
| 2001 | 25,303,377 | 7,001,777 |
| 2002 | 25,759,042 | 7,110,186 |
| 2003 | 26,214,054 | 7,205,493 |
| 2004 | 26,637,093 | 7,287,728 |
| 2005 | 26,998,154 | 7,346,813 |
| 2006 | 27,392,671 | 7,412,995 |
| 2007 | 27,803,081 | 7,452,332 |

Note: Local police jurisdictions' mandated reporting on "domestic violence-related calls for assistance" is one data source commonly used to describe the frequency of domestic violence in California, because it is population-based and easily accessible. However, these data only illustrate local law enforcement practices and response to domestic violence calls and are not an adequate source for measuring either the prevalence or incidence of domestic violence injuries.

* Data cannot be broken down by age; therefore, calls included both adults and juveniles.

Sources: California Department of Justice, Division of Law Enforcement, Law Enforcement Information Center Special Report,

"Total Domestic Violence Calls Received by Type of Weapon, by County, 1990-2001".

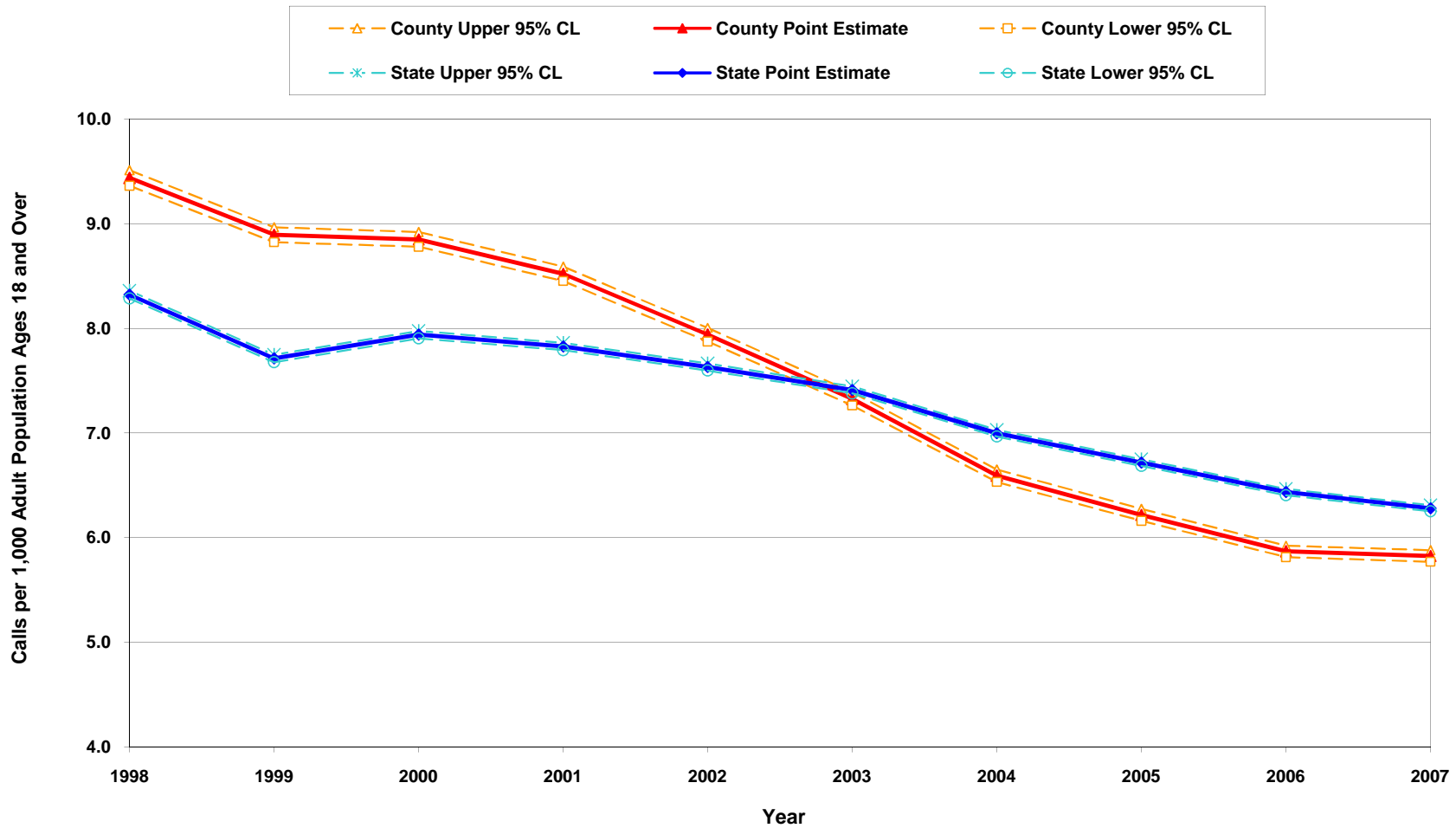
California Department of Justice, Criminal Justice Statistics Center, California Criminal Justice Profile 1998-2005.

California Department of Justice, Criminal Justice Statistics Center, Special Request Unit, 2006 data received by email on September 23, 2008.

Denominator data: California Department of Finance, "Race/Ethnic Population with Age & Sex Detail, 1970-2050", Sacramento, California, May 2004.

Denominator data: California Department of Finance, "Race/Ethnic Population with Age & Sex Detail, 2000-2050", Sacramento, California, July 2007.

Domestic Violence Calls to Law Enforcement Agencies per 1,000 Adult Population Ages 18 and Over California vs. Los Angeles County, 1998-2007



California Department of Justice, Criminal Justice Statistics Center, California Criminal Justice Profile 1998-2005.

DOMESTIC VIOLENCE

INDICATOR: Domestic Violence-Related Calls for Assistance: Proportion of Cases with Weapons

DEFINITION: The number and proportion of domestic violence-related calls to law enforcement agencies that involved weapons

NUMERATOR: Number of domestic violence-related calls with weapons

DENOMINATOR: Total number of domestic violence calls to law enforcement agencies

HEALTHY PEOPLE 2010 OBJECTIVE: None

Domestic Violence-Related Calls for Assistance: Cases with weapons

| Los Angeles County | | | | | | | |
|--------------------|--|----------------|---------------------|--------------------------|-----------------------------|------------------------|-------------------------|
| Year | Domestic violence-related calls for assistance | | | Number by Type of Weapon | | | |
| | Number of Calls | Proportion (%) | Number with Weapons | Firearm | Knife or Cutting Instrument | Other Dangerous Weapon | Hands, Fist, Feet, etc. |
| 1998 | 62,278 | 70.0% | 43,619 | 622 | 1,852 | 5,055 | 36,090 |
| 1999 | 59,834 | 71.2% | 42,573 | 612 | 1,706 | 5,034 | 35,221 |
| 2000 | 60,960 | 72.2% | 44,029 | 682 | 1,846 | 5,568 | 35,933 |
| 2001 | 59,661 | 71.7% | 42,798 | 637 | 1,639 | 5,760 | 34,762 |
| 2002 | 56,452 | 70.9% | 40,017 | 753 | 1,657 | 5,758 | 31,849 |
| 2003 | 52,790 | 71.6% | 37,817 | 671 | 1,639 | 5,650 | 29,860 |
| 2004 | 48,041 | 71.7% | 34,430 | 513 | 1,481 | 4,766 | 27,670 |
| 2005 | 45,684 | 71.9% | 32,862 | 528 | 1,353 | 4,449 | 26,532 |
| 2006 | 43,508 | 67.7% | 29,445 | 460 | 1,229 | 3,881 | 23,875 |
| 2007 | 43,416 | 63.0% | 27,340 | 411 | 1,145 | 3,383 | 22,401 |

* Data cannot be broken down by age; therefore, calls included both adults and juveniles.

Sources: California Department of Justice, Division of Law Enforcement, Law Enforcement Information Center Special Report, "Total Domestic Violence Calls Received by Type of Weapon, by County, 1990-2001".

California Department of Justice, Criminal Justice Statistics Center, California Criminal Justice Profile 1998-2005.

California Department of Justice, Criminal Justice Statistics Center, Special Request Unit, 2006 data received by email September 23, 2008.

DOMESTIC VIOLENCE

INDICATOR: Domestic Violence: Arrest Rate for Spousal Abuse

DEFINITION: The rate per 1,000 adult population (ages 18 and over) of arrest for domestic violence incidence

NUMERATOR: The total number of adults arrested for spousal abuse (violation of Penal Code Section 273.5, male and female perpetrators), by place of residence, in a calendar year

DENOMINATOR: The total adult population (ages 18 and over), by place of residence, in a calendar year

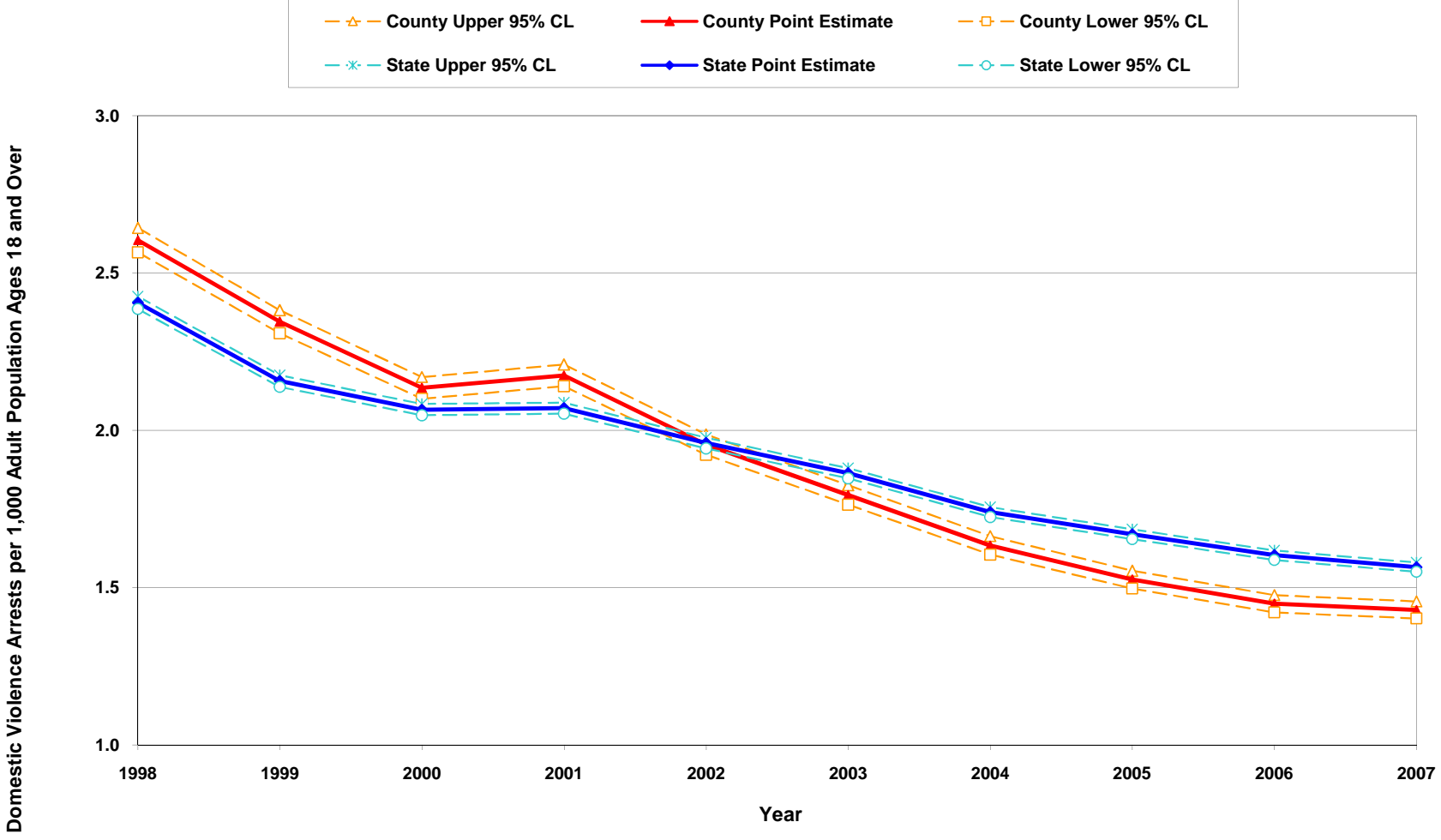
HEALTHY PEOPLE 2010 OBJECTIVE:
None

Domestic Violence: Arrests for spousal abuse

| Year | California | | | | | | Los Angeles County | | | | | | Denominator: Total Adult Population Ages 18 and Over | |
|------|------------|--------|--------|------|--------------|--------------|--------------------|--------|--------|------|--------------|--------------|--|-----------|
| | Total | Male | Female | Rate | Lower 95% CI | Upper 95% CI | Total | Male | Female | Rate | Lower 95% CI | Upper 95% CI | California | LA County |
| 1998 | 56,892 | 47,519 | 9,373 | 2.4 | 2.4 | 2.4 | 17,190 | 14,330 | 2,860 | 2.6 | 2.6 | 2.6 | 23,651,798 | 6,600,528 |
| 1999 | 52,128 | 43,104 | 9,024 | 2.2 | 2.1 | 2.2 | 15,776 | 13,029 | 2,747 | 2.3 | 2.3 | 2.4 | 24,172,144 | 6,727,543 |
| 2000 | 51,225 | 41,885 | 9,340 | 2.1 | 2.0 | 2.1 | 14,706 | 11,911 | 2,795 | 2.1 | 2.1 | 2.2 | 24,796,813 | 6,888,237 |
| 2001 | 52,392 | 42,662 | 9,730 | 2.1 | 2.1 | 2.1 | 15,227 | 12,351 | 2,876 | 2.2 | 2.1 | 2.2 | 25,303,377 | 7,001,777 |
| 2002 | 50,479 | 40,885 | 9,594 | 2.0 | 1.9 | 2.0 | 13,899 | 11,234 | 2,665 | 2.0 | 1.9 | 2.0 | 25,759,042 | 7,110,186 |
| 2003 | 48,854 | 39,325 | 9,529 | 1.9 | 1.8 | 1.9 | 12,931 | 10,485 | 2,446 | 1.8 | 1.8 | 1.8 | 26,214,054 | 7,205,493 |
| 2004 | 46,353 | 37,235 | 9,118 | 1.7 | 1.7 | 1.8 | 11,911 | 9,633 | 2,278 | 1.6 | 1.6 | 1.7 | 26,637,093 | 7,287,728 |
| 2005 | 45,083 | 36,116 | 8,967 | 1.7 | 1.7 | 1.7 | 11,208 | 9,120 | 2,088 | 1.5 | 1.5 | 1.6 | 26,998,154 | 7,346,813 |
| 2006 | 43,911 | 35,264 | 8,647 | 1.6 | 1.6 | 1.6 | 10,741 | 8,665 | 2,076 | 1.4 | 1.4 | 1.5 | 27,392,671 | 7,412,995 |
| 2007 | 43,911 | 35,264 | 8,647 | 1.6 | 1.6 | 1.6 | 10,652 | 8,458 | 2,194 | 1.4 | 1.4 | 1.5 | 27,803,081 | 7,452,332 |

Sources: California Department of Justice, Criminal Justice Statistics Center, "Review of Domestic Violence Statistics, 1990-2003", Data retrieved June 12, 2007.
 California Department of Justice, Criminal Justice Statistics Center, Special Request Unit, 2004-2005 data received by fax June 11, 2007.
 California Department of Justice, Criminal Justice Statistics Center, Special Request Unit, 2006 data received by fax September 23, 2008.
 Denominator data: California Department of Finance, "Race/Ethnic Population with Age & Sex Detail, 1970-2050", Sacramento, California, May 2004.
 Denominator data: California Department of Finance, "Race/Ethnic Population with Age & Sex Detail, 2000-2050", Sacramento, California, July 2007.

Domestic Violence Arrests per 1,000 Adult Population Ages 18 and Over California vs. Los Angeles County, 1998-2007



Sources: California Department of Justice, Criminal Justice Statistics Center, "Review of Domestic Violence Statistics, 1990-2003", Data retrieved June 12, 2007.
 California Department of Justice, Criminal Justice Statistics Center, Special Request Unit, 2004-2005 data received by fax June 11, 2007.
 Denominator data: California Department of Finance, "Race/Ethnic Population with Age & Sex Detail, 1970-2050", Sacramento, California, May 2004.
 Denominator data: California Department of Finance, "Race/Ethnic Population with Age & Sex Detail, 2000-2050", Sacramento, California, July 2007.