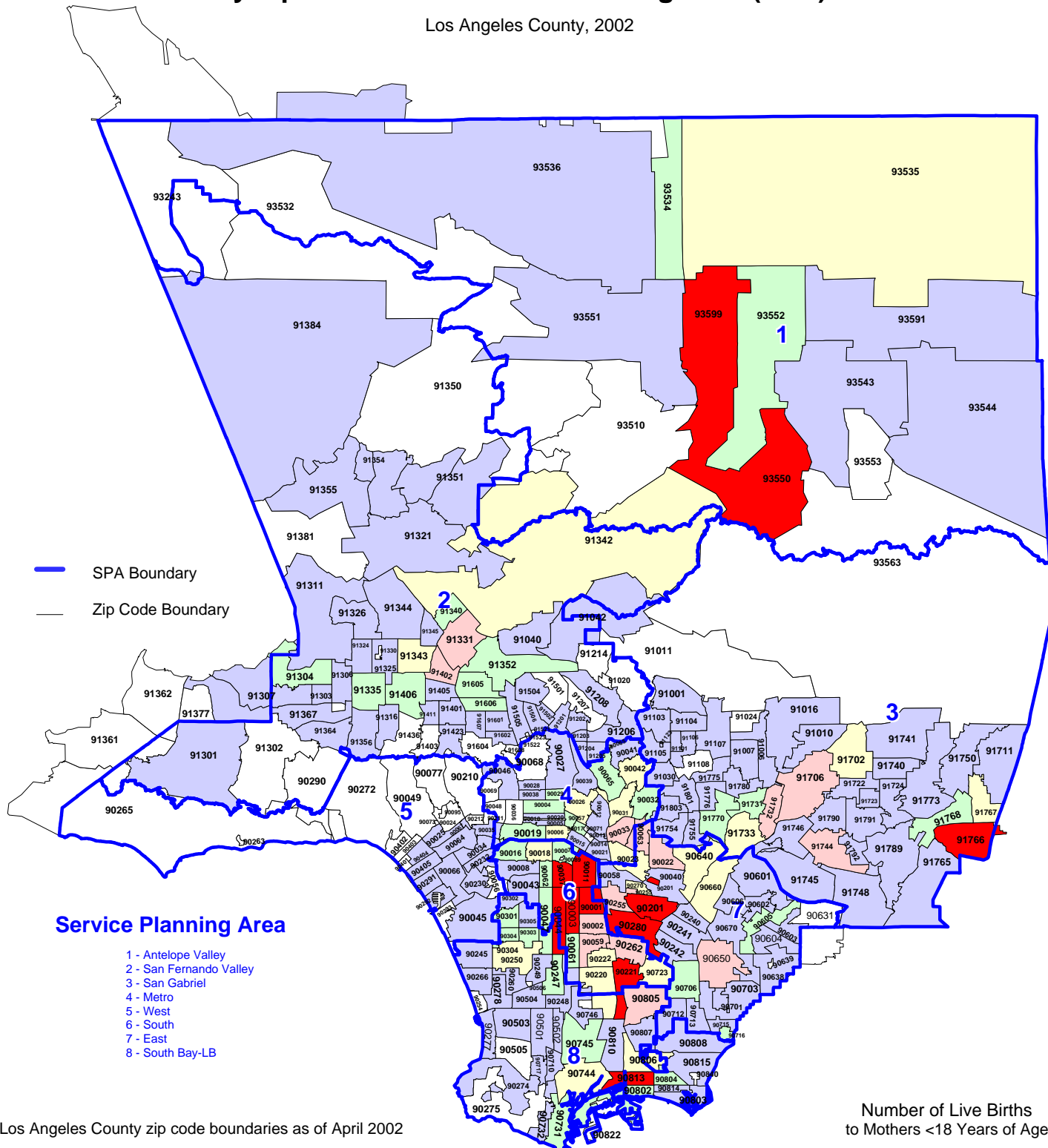


Number of Live Births to Mothers Less Than 18 Years of Age by Zip Code* and Service Planning Area (SPA)

Los Angeles County, 2002



* Los Angeles County zip code boundaries as of April 2002

Total number of live births in Los Angeles County, 2002 = 151,167

Source: California Department of Health Services
Center for Health Statistics, Vital Statistics, 2002

n = total number of zip codes in range