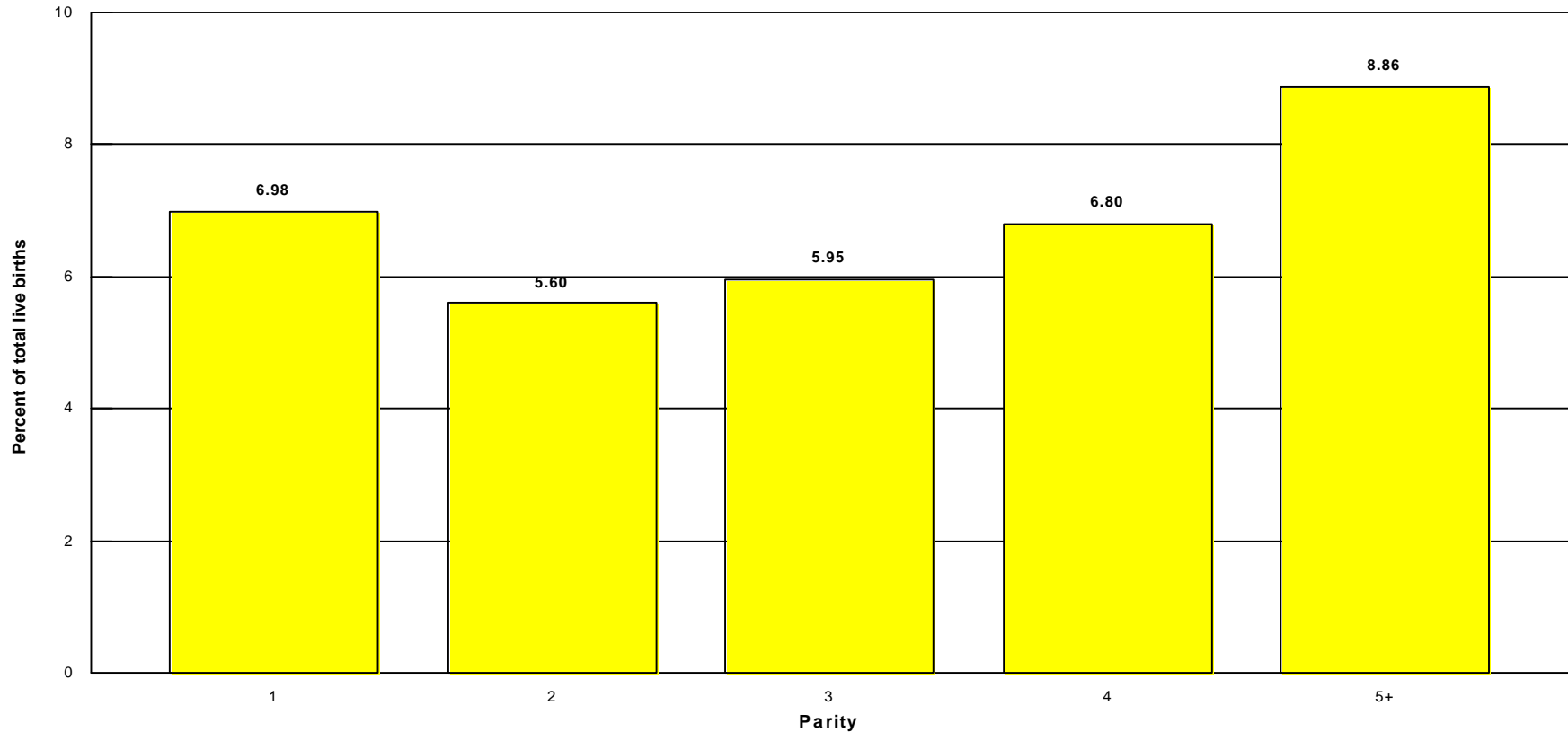


### Low Birthweight Live Births, as Percent of Total Live Births, by Parity

Los Angeles County, 1997



	Parity											
	1		2		3		4		5+		Not Stated	
Live Births	Number	Percent	Number	Percent	Number	Percent	Number	Percent	Number	Percent	Number	Percent
<2,500 grams	4,272	6.98	2,824	5.60	1,678	5.95	857	6.80	832	8.86	24	11.94
Total	61,175	100.00	50,459	100.00	28,212	100.00	12,595	100.00	9,394	100.00	201	100.00

Year 2000 Objective: Reduce low birthweight to an incidence of no more than 5 percent of live births.

Note: Parity = number of pregnancies resulting in live births to a woman

Low birthweight is defined as weight less than 2,500 grams at birth.

Source: 1997 birth records from the California Department of Health Services, Center for Health Statistics

