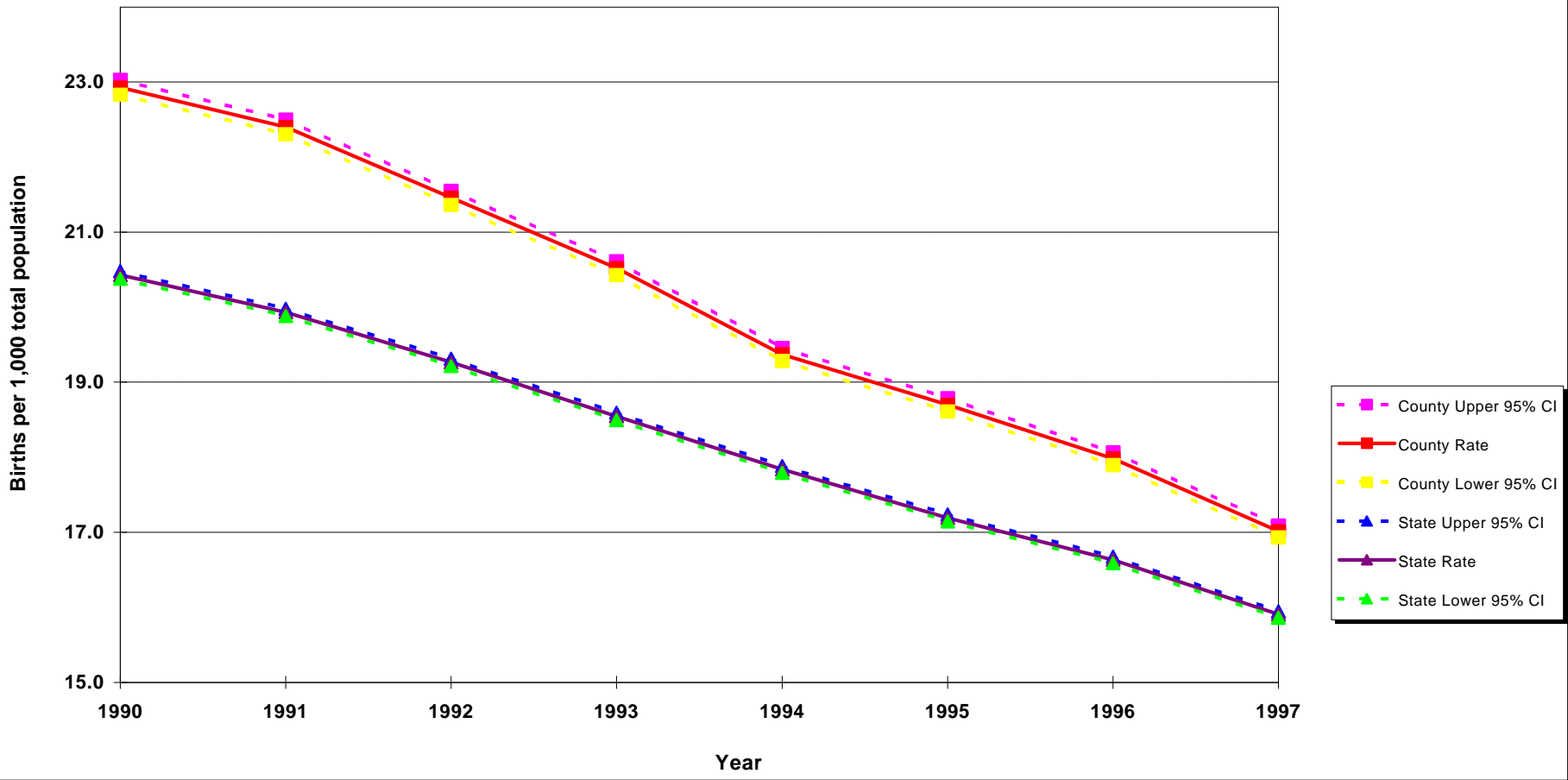


### Birth Rate per 1,000 Total Population California vs. Los Angeles County, 1990 - 1997



**Sources:** 1990-1997 birth records from California Department of Health Services, Center for Health Statistics  
 Denominator data: State of California, Department of Finance, Race/Ethnic Population Estimates with Age and Sex Details, 1970-2040, Sacramento, California, December, 1998

