



# Domestic Violence Council (DVC)

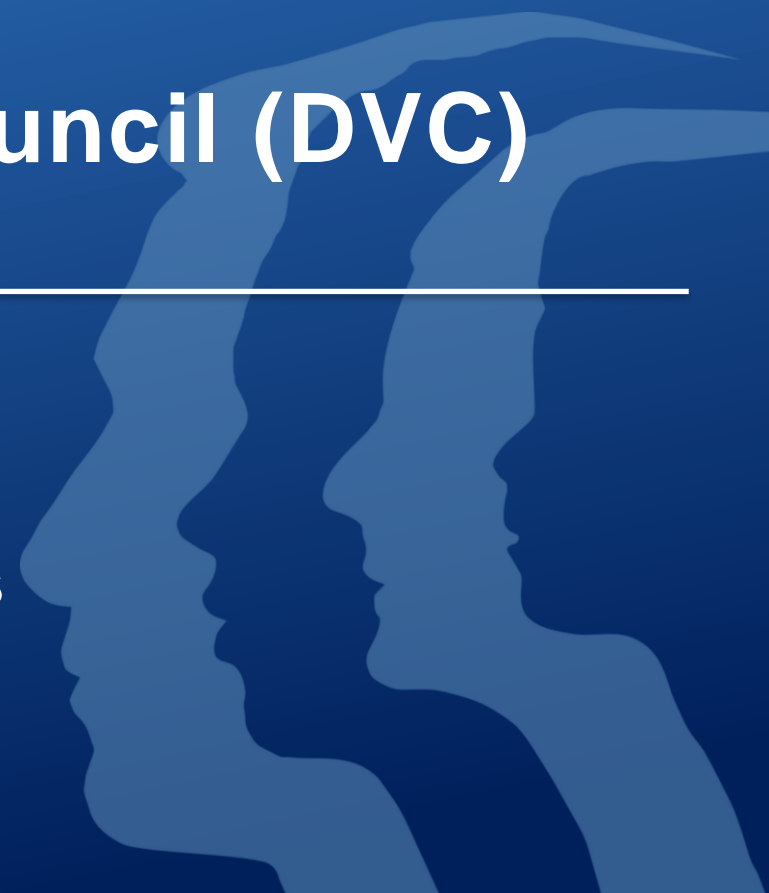
---

**General Membership Meeting**

**Tuesday, May 21<sup>st</sup>, 2024**

**12:00pm – 2:00pm (Pacific Time)**

**LA County Dept. of Public Works  
& Virtual (MS Teams)**





# Welcome Remarks



# Land Acknowledgment

The County of Los Angeles recognizes that we occupy land originally and still inhabited and cared for by the Tongva, Tataviam, Serrano, Kizh, and Chumash Peoples. We honor and pay respect to their elders and descendants — past, present, and emerging — as they continue their stewardship of these lands and waters. We acknowledge that settler colonization resulted in land seizure, disease, subjugation, slavery, relocation, broken promises, genocide, and multigenerational trauma. This acknowledgment demonstrates our responsibility and commitment to truth, healing, and reconciliation and to elevating the stories, culture, and community of the original inhabitants of Los Angeles County. We are grateful to have the opportunity to live and work on these ancestral lands.

We are dedicated to growing and sustaining relationships with Native peoples and local tribal governments, including (in no particular order) the

**Fernandeño Tataviam Band of Mission Indians**

**Gabrielino Tongva Indians of California Tribal Council**

**Gabrieleno/Tongva San Gabriel Band of Mission Indians**

**Gabrieleño Band of Mission Indians – Kizh Nation**

**San Manuel Band of Mission Indians**

**San Fernando Band of Mission Indians**

*To learn more about the First Peoples of Los Angeles County, please visit the Los Angeles City/County Native American Indian Commission website at [lanaic.lacounty.gov](http://lanaic.lacounty.gov).*



# Meeting Protocol

- ❑ Please be reminded that this is an open and public convening.
- ❑ Anything discussed in this space is neither protected, nor confidential.
- ❑ Any client or survivor identifying information should not be presented. Thus, please avoid discussion of personal cases.
- ❑ If you need additional resources, please connect with myself or Cindy Hernandez after the meeting. Thank you!



# Welcome and Introductions

- Your name
- Pronouns
- Title/Role
- Agency or Affiliation



# Agenda

1. Welcome and Introductions
2. Immigration Update
3. Panel Presentation – Specialized Services for AAPI Survivors
4. DVC African American Caucus
5. Domestic Violence Alliance – Lived Experience Advisory Committee
6. Announcements and Public Comments
7. Closing



# IMMIGRATION UPDATE



**Lizeth Castillo, Managing Attorney**  
Peace Over Violence  
Los Angeles County VAWA Network





# **PANEL PRESENTATION: SPECIALIZED SERVICES FOR AAPI SURVIVORS**

**Yusra Khan, Communications & Marketing Coordinator**  
South Asian Helpline and Referral Agency (SAHARA)

**Jo Takarabe, Shelter Program Manager**  
Center for the Asian Pacific Family (CPAF)

**Sunhee Kim, Gender-Based Violence Program Director**  
Korean American Family Services





# SAHARA

Caring for the South Asian Community



## South Asian Helpline and Referral Agency

**Phone: 562-402-4132**

**Helpline : 1-888-724-2722**

**Services available for Los Angeles, Orange County, Riverside and Surrounding Counties**


# Our Mission :


- ❖ **SAHARA** serves survivors of all forms of abuse within the South Asian Community in Southern California with **culturally sensitive** and **linguistically specific** services
- ❖ At **SAHARA**, we firmly believe that everyone, regardless of age, gender, ethnicity, and sexual orientation, deserves to live a life of dignity and respect.



# Our Programs

 Domestic Violence Program

 Elder Abuse Program

 Citizenship Program

 Public Benefits Program

 Mental Health Program

 Housing Program

SAHARA is committed to serving the growing number of South Asians in Southern California by providing them with support services, skill development, and informational resources.

Our services are available to all populations however our target population is the most vulnerable and marginalized South Asian community members, which include people from India, Pakistan, Bangladesh, Nepal, Afghanistan, Bhutan, and Sri Lanka.

## Domestic Abuse Program

SAHARA's **Project C.A.R.E.** (Counseling, Advocacy, Rehabilitation/Reintegration, and Education), a holistic trauma-informed program, provides a safety net of services to support individuals and families impacted by violence.

Supportive services and resources provided include the following :

- Safety Plan
- Mental Health Support
- Legal Help and Referral (In-house legal clinics)
- Educational Resources
- Case Management
- Life Skills Training
- ESL/ Civics Education
- Employment Education
- Immigration Assistance
- Transitional Living Housing/Shelter



## Elder Abuse Program

At SAHARA we believe that our elders deserve to live their life with dignity, respect and free from physical, emotional, abandonment, financial and sexual abuse.

SAHARA's **Project S.E.W.A.** (South-Asian Elder Wellness Assistance) helps elders within the South Asian community with a safe, healthy, and improved quality of life.

Support Services include:

- Specialized Care Management
- Mental Health Support
- Assistance with Public Benefits
- Community Engagement and Linkages
- Housing Navigation
- Food Assistance
- Transportation
- Immigration Assistance





## Citizenship Program

Many immigrants come to the US in search of a better life. Becoming a citizen allows these migrants many benefits, not just for them but also for the community they live in. At SAHARA we assist with American Citizenship Applications and provide free citizenship clinics in our office.

At these clinics, we provide:

- Application Assistance
- Fee Waiver Application
- Citizenship Interview Preparation
- Civics Education

अमेरिकी नागरिक बनें

यु.एस. ना नागरिक बनी

U.S. పౌరుడిగా అవ్వండి

ஒரு அமெரிக்க குடிமகன் ஆக

امریکی شہری بنیں۔

ਅਮਰੀਕੀ ਨਾਗਰਿਕ ਬਣੋ

মার্কিন নাগরিক হন

### BECOME A U.S. CITIZEN

FREE AND CONFIDENTIAL

**Citizenship Assistance**



**Benefits of Citizenship:**

- Vote in Elections
- Sponsor Your Family Immigrate to the U.S.
- Improve Financial Stability
- Increase Access to Student Aid & Jobs
- Increase Access to Public Benefits





YOU MAY BE ELIGIBLE FOR A **FEE WAIVER!**

**We speak multiple South-Asian languages**  
Hindi, Urdu, Punjabi, Gujarati, Telugu, and Tamil

Collaboration With:



## Public Benefits Program

❖ SAHARA staff work hands-on with clients to ensure their connection to Government benefits and services are not terminated, especially for limited English speakers who face significant barriers.

### Assistance with:

- **Medi- Cal**
- **Food Stamps**
- **Cash Aid**
- **SSI**
- **Medicare**
- **Disability**
- **Access Paratransit Services**
- **In Home Supportive Services ( IHSS)**
- **Public Housing**



## Mental Health Program

- ❖ Cultural and societal differences can create stress and anxiety among these families and individuals of every age. Specific factors that can cause these feelings are:
  - ❖ - culture shock
  - ❖ -missing family back home
  - ❖ - sense of isolation
  - ❖ - barrier of language and communication
  - ❖ -mental gap between generations
  - ❖ - racism
  - ❖ - lack of support during abuse
  - ❖ - financial issues



- ❖ At SAHARA, we take an integrative, logical approach to problem-solving. The goal is to assist survivors with wrap-around services to improve their lives.
- ❖ Services Provided:
  - Individual Counseling
  - Support Groups
  - Parenting group
  - Art therapy workshops
  - Self Care Workshop



## Housing Program

- ❖ Our **Transitional Housing program** supports the needs of clients by providing safe housing for those experiencing a case of domestic violence.
- ❖ Another housing program, **Housing 1st**, aims to prevent homelessness or assist those at risk of homelessness or eviction by providing rental support and helping with steps towards permanent housing.
- ❖ \*Eligibility and limitations apply\*
- ❖ We provide ethnic food to accommodate their dietary needs such as Halal, vegetarian, non-vegetarian and Vegan food.
- ❖ Clients are able to stay in our shelter for approximately 6 months or longer, depending on their needs.

### If eligible clients can receive support in:

- Emergency / Temporary Hotel Stay
- Short to Medium Term Rental Assistance
- Tuition Costs (for some college and licensing programs)
- Child Care Costs (limited funds apply)
- Transportation and Food Assistance (Lyft and Food Market Gift Cards )



## Volunteer/Youth Program

❖ This program is open to all ages and is an excellent opportunity for teens or adults to delve into social justice work, civic engagement, community building, and student collaborations. You can work to identify and discuss personal and social issues in a culturally sensitive safe space, where they learn the skills to be productive and healthy members of not just the South Asian community but the society at large. .

❖ Volunteer Opportunities range from :  
**outreach and community engagement**, translation, and **special event support**. Each volunteer's skills and interests are considered to ensure they are paired with the most appropriate activity for a mutually beneficial and rewarding experience.



**Ask for our Volunteer application!!!**

**Inspirational Fact!**  
**Art created by Domestic Violence Survivors**



17100 Pioneer Blvd. Suite 320, Artesia, CA 90701

[www.saharacares.org](http://www.saharacares.org)





# **A Special Piece called “Balancing Different Disparities of Life”**

# Your Donations Matter- Our impact During 2023



**6921 Hours of Case Management Services**



**1459 Hours of Mental Health Counseling**

**1300 Domestic Violence Participants**



**230 Public Benefits Applications Submitted**



**152 Citizenship Applications**



**Fee Waiver Eligible Residents Saved \$19,350**

**2346 Shelter Bed Nights**



# Center for the Pacific Asian Family

## Services

- Prevention
- 24-Hour Multilingual Helpline 1-800-339-3940
- Non-Residential services
- Emergency Shelter + Transitional Shelter



# Center for the Pacific Asian Family

## Prevention

- Non-Violent Parenting Workshops
- Healthy Relationships Classes Delivered in LA area schools
- API- Youth Forum







# API Youth Forum



CENTER FOR THE  
PACIFIC ASIAN FAMILY  
NURTURING CHANGE TOGETHER





# API Youth Forum 2024

**THEME: Embracing Differences Together**

**OBJECTIVES:**

- **Celebrate API cultures.**
- **Promote nonviolence, healthy relationships, mental health, and leadership from a culturally specific perspective.**
- **Center the voices and contributions of API youth ages 13-24.**



# Center for the Pacific Asian Family

## 24 Hour Multi-lingual Hotline and Direct Non-Residential services

- Provide hotline support in 30 API languages.
- Supported 95 non-residential clients with advocacy, case management and para-professional counseling
- Provided healing groups i.e. art/Tai Chi/Yoga



# Center for the Pacific Asian Family

## Shelter Programs

- **Emergency Shelter** – 2022-23 served 95 survivors and children. 90% transitioned into transitional housing and 90% increased or maintained their income.
- **Transitional Shelter** – 2022-23 served 65 families and their children. 90% of survivors transitioned into permanent housing. 87% of survivors increased or maintained income.



## Continued Challenges

**Many of CPAF's API are LEP and are limited to entry-level service sector jobs, often in food service or salon services where work may be part-time.**

**Average Salaries at Time of Exit:**

**Emergency Shelter: \$17,682**

**Transitional Shelter: \$21,006**

**Average rent for 1 bedroom - \$1601-\$2101**





# Our Mission

KFAM's mission is to empower underserved Korean American and Asian Pacific Islander families through culturally responsive programs.



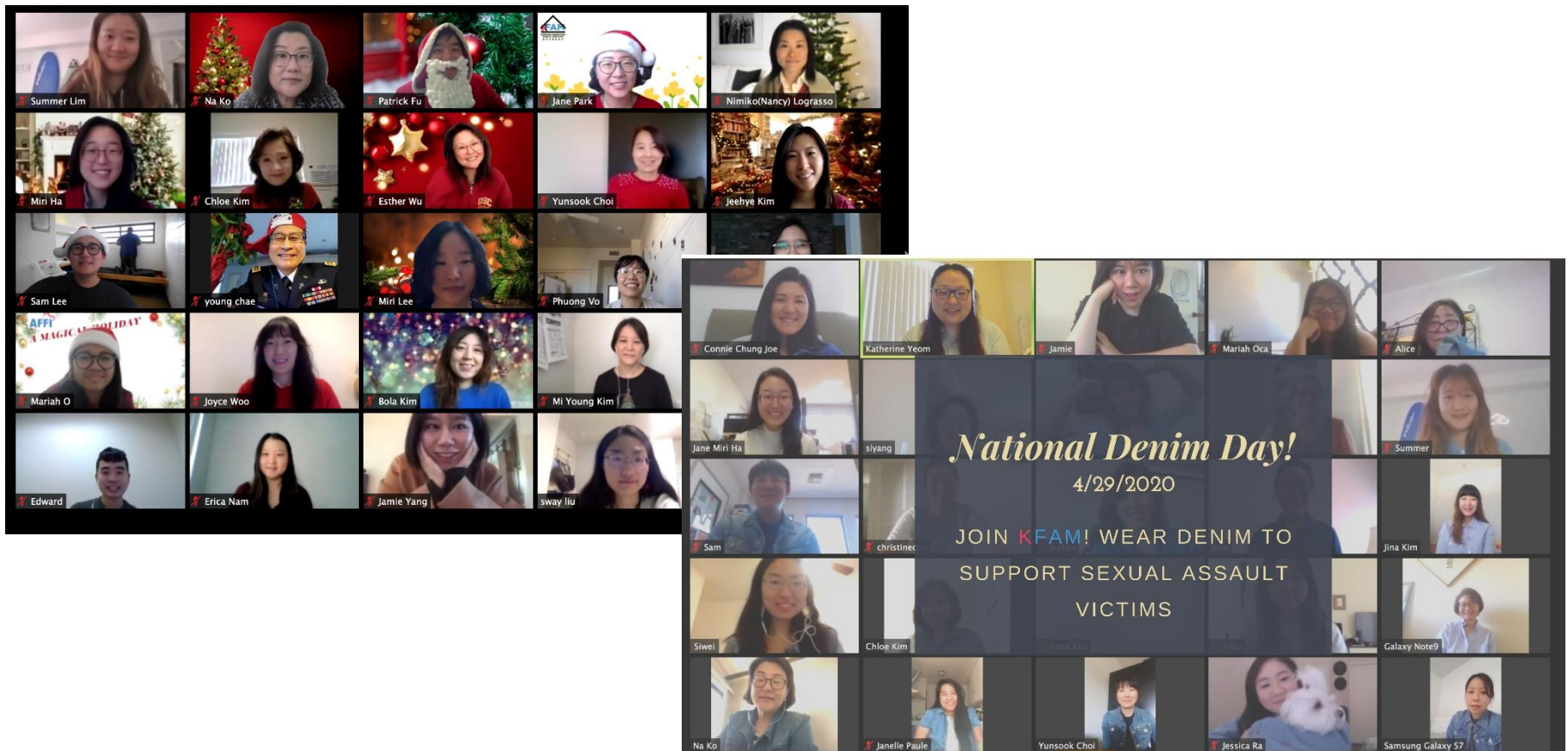
# Our History

KFAM was founded in 1983 in the heart of Koreatown in Los Angeles, California.



# KFAM Staff

- KFAM has 44 Staff, 12 Trainees and Interns and over 50 volunteers throughout the year.





# KFAM Programs

KFAM specializes in providing linguistically and culturally appropriate services through its multilingual and multicultural staff.

- 1) Mental Health
- 2) Gender Based Violence
- 3) Adoption & Foster Family Initiative
- 4) Child and Adult Wellness





# Mental Health

- Mental Health services are foreign to many API communities
- KFAM's mental health services are tailored to the unique needs of Korean American families, adults, & children (1<sup>st</sup>, 1.5 and 2<sup>nd</sup> generation)
- Education to bring more awareness and break stigma



# Mental Health Services

- Individual, group and family therapy
- Psychiatric evaluations
- Medication support
- Psycho-education
- Parenting skills training and education



# CLIENT DEMOGRAPHIC

| ETHNICITY                   | INCOME  | LANGUAGE   | LEGAL STATUS     | GENDER     | AGE            | TOP 5 DIAGNOSIS               |
|-----------------------------|---|------------|------------------|------------|----------------|-------------------------------|
| 96% Korean                  | 82% Low income (Pro bono, self-pay, OCS/SS PEI, Medi-Cal)   | 71% Korean | 42% Undocumented | 43% Male   | 18% Child      | 34% Depression Disorder       |
| 4% Biracial, Chinese, Other | 13% Mid-level (Employed and no financial support from KFAM) |            | 28% Unknown      | 57% Female | 6% Young Adult | 30% Parent and Child Conflict |
|                             |   |            |                  |            | 70% Adult      | 27% Relationship Distress     |
|                             |   |            |                  |            | 2% Older Adult | 4% Anxiety                    |
|                             |   |            |                  |            | 4% Unknown     |                               |



# Mental Health Infographic

20  
22 

367

NUMBER OF CLIENTS

5,872

NUMBER OF THERAPY SESSIONS



34 % DEPRESSIVE DISORDER

30 % PARENT AND CHILD CONFLICT

27 % RELATIONSHIP DISTRESS

4 % ANXIETY

5 % OTHER ISSUES

AVERAGE TREATMENT LENGTH

**7-10 MONTHS**

NUMBER OF OEE EVENTS AND PARTICIPANTS **18** WEBINAR/WORKSHOP

**292** PARTICIPANTS

EXPECTED WAITING PERIOD AVERAGE

**3-4 MONTHS**

# Gender Based Violence

- Victims of Violence: Domestic Violence, Family Violence, Sexual Assault, Human Trafficking, North Korean Refugees, Asian Hate Crime

KFAM's Center for Women and Children provides free trauma-informed care and support for victims of violence and their families.



# Gender Based Violence Services

- 24-hour crisis hotline
- Victim and trauma counseling
- Case management, and empowerment services for victims
- Batterers intervention program
- Abuse prevention/intervention
- Safety planning
- Work force development
- financial trainings





# Gender Based Violence

- KFAM has a support group called Life Beyond
- KFAM collaborates with Faith Based Organizations; training faith leaders to be firsthand responders to violence, and referral partnerships with churches and community groups
  - Temples
  - Churches
  - Monasteries





# Gender Based Violence Infographic

20  
22



73% LIMITED  
ENGLISH

53% NO VALID VISA

70% KOREAN  
IMMIGRANT  
WOMEN

10% IDENTIFIED AS  
HOMELESS

Limited support system  
Financial difficulties  
Severe Trauma Experienced

194 CLIENTS SERVED



158 DV

36 SA/HT



40

CLIENTS RECEIVED  
FINANCIAL SUPPORT



250

HOTLINE  
CALLS RECEIVED



# Child and Adult Wellness

- Child Care Food Program feeds 3,000 children daily with nutritious, healthy meals and snacks
- Workshops about healthy life skills, tools to enhance daily life
- Senior Yoga
- Educational events in collaborations with local museums and businesses
- Anti School Violence Program
- Substance Abuse Prevention and Control Program





# Child Care Food Program Infographic

20  
22 

## Home and Centers

**100%** Low Income Families

CCFP Homes **130**



**38** CCFP Centers

## Child Care Food Program

MONTHLY  
AVERAGE CHILDREN SERVED

**2,900**



**15**  
LESS HOMES SINCE  
START OF PANDEMIC

**90%**

OF TOTAL NUMBER OF  
CHILDREN BEFORE  
PANDEMIC STARTED  
WERE REACHED

# Adoption & Foster Family Initiative (AFFI)

- Recruits, trains, and supports Korean & other Asian Pacific Islanders (API) foster parents
  - Korean, Mandarin, Cantonese, Filipino and Vietnamese
- Provide culturally appropriate homes to API foster kids
- Prevention work to help families stay out of systems
- Support adoption processes and help foster youth find their forever homes.



# 2022 AFFI HIGHLIGHTS & STATS

- **Adoption Program launch November 2022 (First and Only)**
- **More support programs for families and teens to maintain placements**
  - Teen Club, support groups, MH, advocacy, family events and picture contests
- **26** placements of foster children (107 in total)
- **9** reunified with families (63 in total)
- **15** in adoption process (36 adoption papers signed)
- **10** new families approved
- **358** hotline calls
- **645** at-risk children and caregivers supported through other AFFI programs & events



# PANEL PRESENTATION: SPECIALIZED SERVICES FOR AAPI SURVIVORS

**QUESTIONS?**



## DVC – AFRICAN AMERICAN CAUCUS (AAC)

- ❑ During June and July 2023 DVC meetings, panelists shared the disproportionate impact of DV on African American community.
- ❑ At these meetings, attendees also voiced the unaddressed needs and gaps specific to AAPI and requested that the DVC take steps to call out and identify strategies and actions to address these needs and gaps.
- ❑ In December 2023, DVC held its first DVC – African American Caucus, an ad hoc committee to discuss the issue, identify priorities and workplan.
- ❑ Thus far, the group: (1) Discussed the need for a healing/supportive space for AA service providers and allies to discuss current events and cases and identify opportunities for systems improvement. (2) Focus on policy and training. (3) Connection with other likeminded, shared mission/vision group outside of DVC for collaboration. (4) Ongoing awareness.

*“Improving access and response for African American survivors benefits all survivors.”*

**Next meeting: June 14<sup>th</sup>, 2024; 9:00am – 10:30am via MS Teams. To join group:  
[DVC@ph.lacounty.gov](mailto:DVC@ph.lacounty.gov).**



# **DVC – AFRICAN AMERICAN CAUCUS (AAC)**

**Bernita Walker, CEO and Co-Founder**  
PeaceMakers, Inc.

**Cecelia Walker, Coordinator**  
Angel Step Inn

**James Maddox, Social Worker/Policy Analyst/Advocate**  
Maddox & Associates





# **DOMESTIC VIOLENCE ALLIANCE – LIVED EXPERIENCE ADVISORY COMMITTEE**

**Stephanie Whack, DVA Co-Chair/  
DV Program Coordinator - DV System Alignment  
&**

**Tiffany Duvernay-Smith, DVA – Lived Experience Advisor  
Advisory Board Coordinator  
Los Angeles Homelessness Services Authority**





# **DOMESTIC VIOLENCE ALLIANCE – LIVED EXPERIENCE ADVISORY COMMITTEE**

**If you are interested in joining LEAP, please email  
DVC@ph.lacounty.gov**

Subject line: LEAP

Provide your name, pronouns, title/role, and agency/affiliation.



# DVC ANNOUNCEMENTS

- ❑ **VOCA – Be on the look out for an email survey from DVC asking about how your agency is impacted by VOCA. Deadline for returning survey: Noon on 5/31/24.**
- ❑ **VOCA IMPACT VIRTUAL MEETING: May 4<sup>th</sup>, 2024; 9:00am – 10:30am.**

## [Join the meeting now](#)

Meeting ID: 293 041 963 491

Passcode: 4x6Upy

---

## **Dial in by phone**

[+1 323-776-6996](tel:+13237766996), [568727579#](tel:+13237766996) United States, Los Angeles

[Find a local number](#)

Phone conference ID: 568 727 579#

Additional information about the meeting will be available via to DVC Calendar:  
<http://publichealth.lacounty.gov/dvcouncil/calendar/calendar.htm>

- ❑ **JUNE 18<sup>TH</sup> AND JULY 16<sup>TH</sup> (12pm – 2pm): In-person VOCA impact response planning at the California Endowment.**



# ANNOUNCEMENTS AND PUBLIC COMMENTS



# Let Us Know How We Did

- MONTHLY MEETINGS SURVEY  
LINK:

<https://www.surveymonkey.com/r/C8MC8V9>

- Thank you!

