



WEST NILE VIRUS ACTIVITY SUMMARY #14 (August 20, 2004)

The number of West Nile virus cases in Los Angeles County continues to increase.

As of mid-August, 69 cases of West Nile disease have been identified in our county, including 2 fatalities. Cases presenting with neuroinvasive diseases tend to be older (median age 59 years, range 20-91 years) than those with West Nile Fever (median age 48 years, range 9-91 years).

West Nile Virus Case Characteristics Los Angeles County, 2004 ^{1,2}							
Month of Onset	Gender (M / F)	Deaths	Hospitalizations	Blood Donors	West Nile Fever	Neuroinvasive	(Neuroinvasive Clinical Presentation)
June (n=10)	(10 / 0)	0	6	1	8	1	1 = Encephalitis
July (n=43)	(26 / 17)	0	34	3	12	28	9 = Encephalitis 18 = Meningitis 1 = Acute Flaccid Paralysis
August ³ (n=16)	(9 / 7)	2	14	2	3	13	5 = Encephalitis 7 = Meningitis 1 = Acute Flaccid Paralysis
TOTAL³ (N=69)	(45 / 24)	2	54	6	23	42	15 = Encephalitis 25 = Meningitis 2 = Acute Flaccid Paralysis

1. Excludes cases in Long Beach and Pasadena.
 2. Totals are provisional and subject to change. In instances where date of onset is unknown, case is listed by report date.
 3. Case total as of August 20, 2004.

Reporting mosquito breeding sites and areas with water accumulation:

Acute Communicable Disease Control is responsible for monitoring and addressing human health problems in Los Angeles County, but is not directly involved with mosquito control activities. This important action is under the control of the county's five independent mosquito control (abatement) districts. Beyond our county, the Health Departments of Long Beach and Pasadena also operate their own mosquito control programs.

To report a potential mosquito breeding situation, please contact the appropriate Mosquito Abatement District or city public health department:

Antelope Valley
(661) 942-2917

Greater Los Angeles
(562) 944-9656

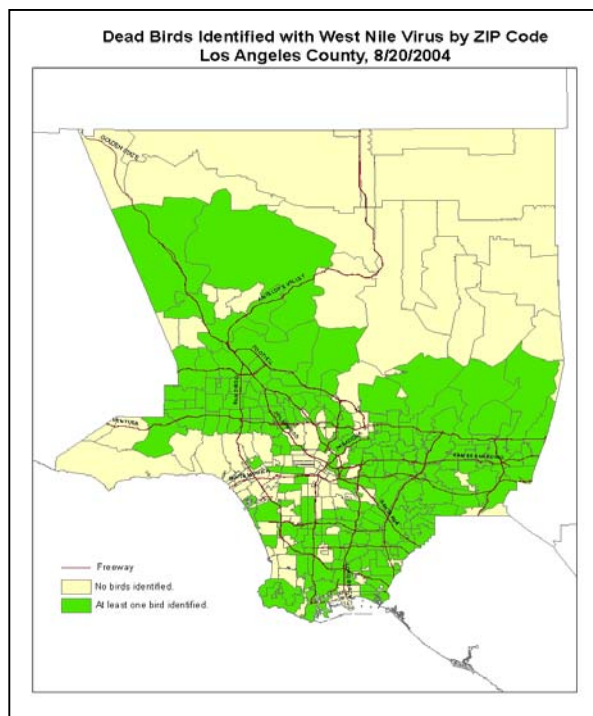
Los Angeles County West
(310) 915-7370

City of Long Beach
(562) 570-4132

Compton Creek
(310) 639-7375

San Gabriel Valley
(626) 814-9466

City of Pasadena
(626) 744-6005



To report potholes or street problems with water accumulation, contact the appropriate city utility; if the problem is in an unincorporated area, please contact the Los Angeles County Department of Public Works.

West Nile virus-infected dead birds:

WNV-infected dead birds have been recovered from nearly all areas of Los Angeles County.

**For questions regarding the reporting and testing of
 West Nile virus, visit:
www.lapublichealth.org/acd/VectorWestNile.htm**

**or contact
 Acute Communicable Disease Control
 213-240-7941
 Mon – Fri 8:00am – 5:00pm**

CESSATION OF DEAD BIRD COLLECTION:

The Health Department has discontinued dead bird collection in over 160 areas across our county since confirmation of the virus has been already well documented in those areas. However, phoned reports are still important and will continue to be received since they provide an on-going indicator of presumed virus activity and help focus containment efforts. **Dead birds can be reported by calling 1-877-747-2243.**

ZIP code areas where dead bird collection has been discontinued. (8-20-04)							
90002	Los Angeles	90504	Torrance	91108	San Marino	91504	Burbank
90008	Los Angeles	90602	Whittier	91206	Glendale	91505	Burbank
90012	Los Angeles	90603	Whittier	91207	Glendale	91506	Burbank
90018	Los Angeles	90604	Whittier	91208	Glendale	91601	North Hollywood
90019	Los Angeles	90605	Whittier	91214	La Crescenta	91602	Studio City
90022	Los Angeles	90606	Whittier	91302	Hidden Hills	91602	Toluca Lake
90023	Los Angeles	90631	La Habra Heights	91303	Canoga Park	91604	Studio City
90024	Los Angeles	90638	La Mirada	91304	Canoga Park	91605	North Hollywood
90028	Los Angeles	90650	Norwalk	91304	West Hills	91606	North Hollywood
90032	Los Angeles	90670	Santa Fe Springs	91306	Winnetka	91607	North Hollywood
90033	Los Angeles	90701	Artesia	91307	Canoga Park	91607	Valley Village
90035	Los Angeles	90703	Cerritos	91307	West Hills	91702	Azusa
90041	Los Angeles	90706	Bellflower	91311	Chatsworth	91706	Baldwin Park
90042	Los Angeles	90712	Lakewood	91321	Santa Clarita	91706	Irwindale
90044	Los Angeles	90713	Lakewood	91324	Northridge	91711	Claremont
90045	Los Angeles	90716	Hawaiian Gardens	91325	Northridge	91722	Covina
90046	Los Angeles	90720	Los Alamitos	91326	Northridge	91722	West Covina
90047	Los Angeles	90723	Paramount	91330	Northridge	91723	Covina
90059	Los Angeles	90744	Wilmington	91331	Arleta	91724	Covina
90061	Los Angeles	90803	Long Beach	91331	Pacoima	91731	El Monte
90065	Los Angeles	90804	Long Beach	91335	Reseda	91732	El Monte
90069	West Hollywood	90805	Long Beach	91340	San Fernando	91740	Glendora
90201	Bell Gardens	90806	Long Beach	91342	Lakeview Terrace	91741	Glendora
90220	Compton	90807	Long Beach	91342	Sylmar	91744	La Puente
90221	Compton	90808	Long Beach	91343	North Hills	91746	La Puente
90240	Downey	90810	Long Beach	91344	Granada Hills	91750	La Verne
90241	Downey	90814	Long Beach	91344	Northridge	91754	Monterey Park
90242	Downey	90815	Long Beach	91345	Mission Hills	91755	Monterey Park
90247	Gardena	91001	Altadena	91352	Sun Valley	91765	Diamond Bar
90248	Gardena	91006	Arcadia	91355	Valencia	91766	Pomona
90249	Gardena	91007	Arcadia	91356	Tarzana	91767	Pomona
90250	Hawthorne	91010	Bradbury	91364	Woodland Hills	91768	Pomona
90262	Lynwood	91010	Duarte	91367	Woodland Hills	91770	Rosemead
90266	Manhattan Beach	91016	Monrovia	91384	Castaic	91773	San Dimas
90274	Rolling Hills	91024	Sierra Madre	91387	Canyon Country	91775	San Gabriel
90275	Rancho P.V.	91030	South Pasadena	91387	Santa Clarita	91776	San Gabriel
90280	South Gate	91040	Sunland	91390	Saugus	91780	Temple City
90292	Marina del Rey	91042	Tujunga	91401	Van Nuys	91789	Walnut
90293	Playa Del Rey	91104	Pasadena	91402	Panorama City	91790	West Covina
90302	Inglewood	91106	Pasadena	91405	Van Nuys	91791	West Covina
90305	Inglewood	91107	Pasadena	91423	Sherman Oaks	91801	Alhambra
90501	Torrance	91108	Pasadena	91501	Burbank	91803	Alhambra

Confirmation of WNV also has been well established in 19 additional areas. However, dead bird collection will continue in these areas in collaboration with statewide surveillance and research:

- **90745–Carson**
- **91745–City of Industry**
- **91316–Encino**
- **91436–Encino**
- **91201–Glendale**
- **91745–Hacienda Heights**
- **90710–Harbor City**
- **90039–Los Angeles**
- **90640–Montebello**
- **90660–Pico Rivera**
- **91748–Rowland Heights**
- **90731–San Pedro**
- **91403–Sherman Oaks**
- **91733–South El Monte**
- **90502–Torrance**
- **91406–Van Nuys**
- **91411–Van Nuys**
- **91436–Van Nuys**
- **90601–Whittier**