

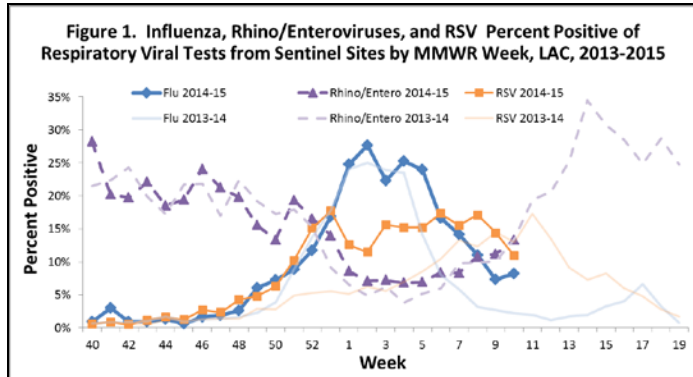
## Influenza Continues to Circulate at Low Levels

Although most influenza surveillance indicators show activity is decreasing, influenza continues to linger; particularly type B which is commonly seen later in the season. During surveillance week 10, for the first time this season, the majority of influenza virus identified by Los Angeles County sentinel laboratories was type B (Table 1). The number of influenza-confirmed community outbreaks is substantially higher than last year; most reported outbreaks occurred in schools, assisted living, and skilled nursing facilities. Overall, influenza A has dominated this season, specifically the drifted H3 subtype. Nationwide data show flu is decreasing across the country, with most states downgraded to regional or local activity (Figure 3).

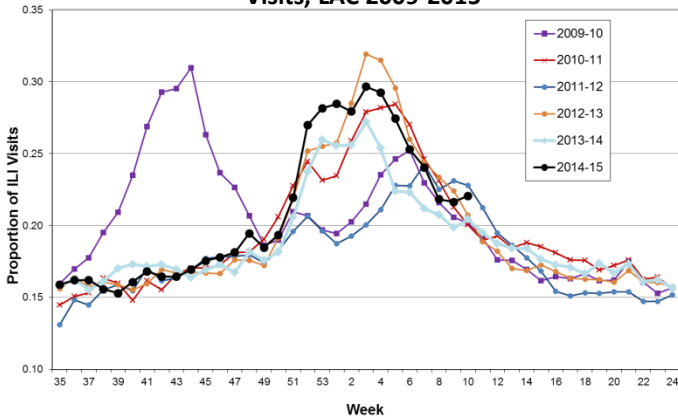
**Table 1. LA County Surveillance Summary**

	2014-2015		2013-2014	
	Week 10	YTD <sup>†</sup>	Week 10	YTD
Percent Positive Flu Tests	7.9%	14.3%	2.2%	11.4%
Percent Flu A/B	40/60	90/10	52/48	96/4
Community Respiratory Outbreaks	0	10	1	12
Influenza Confirmed Outbreaks	0	10	0	2
Pediatric Flu Deaths <sup>††</sup>	0	1	0	3
Adult Flu Deaths	0	41	0	98

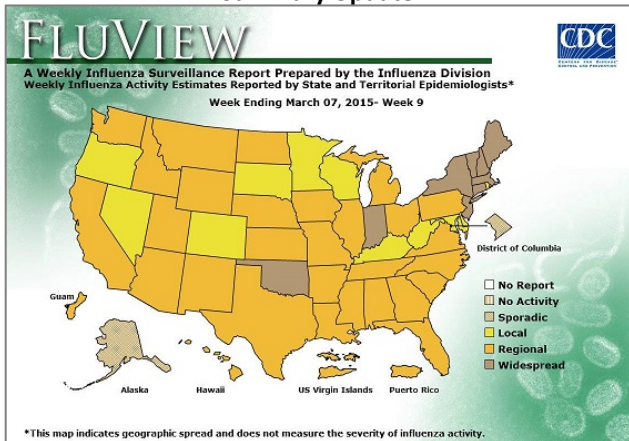
<sup>†</sup>The influenza surveillance year started September 1, 2014  
<sup>††</sup>Confirmed influenza death is defined by a positive lab test, ILI symptoms, and clear progression from illness to death



**Figure 2. Respiratory Illness Emergency Department Visits, LAC 2009-2015**



**Figure 3. CDC Weekly US Map: Influenza Summary Update**



## New Influenza Health Education Materials for Skilled Nursing Facilities

Two new posters for skilled nursing facilities (SNFs) encouraging influenza vaccination for healthcare workers and a notice to visitors to stay away when sick are available on our website:

<http://publichealth.lacounty.gov/acd/HealthEdFlu.htm>

In addition, two frequently asked question documents on influenza in SNFs are available; one for health care professionals and one for visitors and residents. The documents are available for download or by order in both English and Spanish.

