

West Nile Virus and Other Arboviral Diseases



Los Angeles County Epidemiology Report #11 October 19, 2018

- This week, 2 West Nile virus (WNV) cases residing in the city of Los Angeles were documented by the Los Angeles County Department of Public Health (LAC DPH) (Table 1). Of the 43 total infections in 2018, 29 resided in the San Fernando Valley region. The most recent onset occurred 09/25/2018.
- The number of infections identified so far this season is below the previous 5-year average, however, additional cases are expected to occur through the end of the year (Figure 1). [Mosquito pools and dead birds](#) continue to test positive all over LAC. See map below for WNV environmental activity in LAC for 2018.
- The California Department of Public Health (CDPH) has [reported](#) 132 human cases and 5 deaths in the state. Nationally, 1,976 human cases and 86 deaths have been [reported](#) to the Centers for Disease Control and Prevention.

Table 1. Characteristics of WNV Cases, LAC, 2018

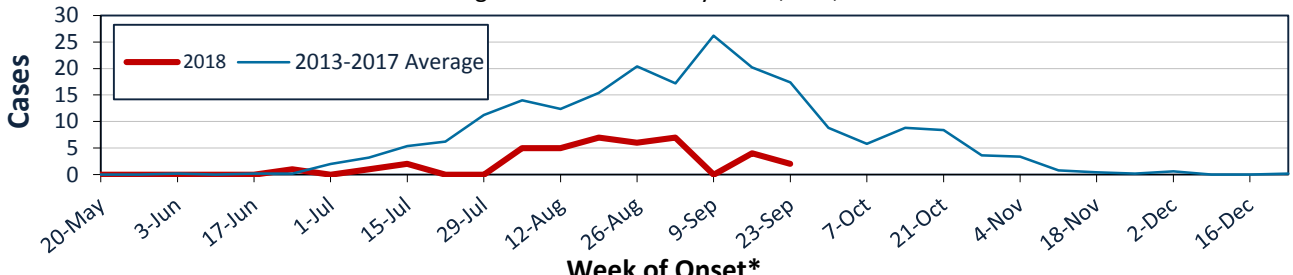
Number of Cases ¹	Asymptomatic Donor ²	Clinical Presentation			Hospitalized	Deaths	Demographics	
		WNV Fever	Neuroinvasive Disease	Neuroinvasive Diagnosis			Gender M/F	Median Age (Range)
This week	2	0	1	0 = Encephalitis 0 = Meningitis 1 = AFP ³	2	0	1/1	72 (68-75)
Year Total	43	3	32	22 = Encephalitis 7 = Meningitis 3 = AFP ³	33	1	32/11	65 (15-89)

¹Count confirmed by LAC DPH as of 10/18/18. Excludes reports from Long Beach and Pasadena. Totals are provisional and subject to change.

²Asymptomatic cases identified in blood or organ donors as part of routine screening.

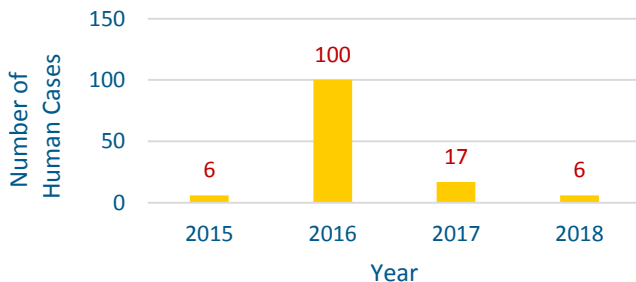
³Acute Flaccid Paralysis

Figure 1. WNV Cases by Week, LAC, 2018

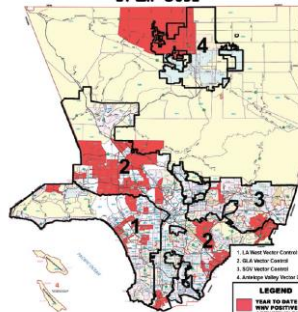


*Asymptomatic blood and organ donors listed by date of donation.

Figure 2. Zika Cases, LAC, 2015-2018 (N= 129)



2018 LOS ANGELES COUNTY WEST NILE VIRUS POSITIVE ACTIVITY BY ZIP CODE



View WNV activity in LAC [here](#).

**This vector can be dangerous
Do You Know Who to Call?**

Vector Control Agencies Protect the Health of Millions

Invasive Aedes Mosquitoes - our NEWEST threat!

Protect your family - remove standing water around your home. Contact your local public health agency to report problems, request assistance, or for mosquito-watching help.

WE ARE HERE TO HELP - BUT WE CAN'T DO IT ALONE!

Los Angeles County
Department of Public Health
Quality Improvement
2025 Van Ness
publichealth@lacounty.gov

City of Long Beach (2018)
Bureau of Environmental Health
Vector Control Department
1842 17th St #12
562-574-4712
www.lacounty.gov

City of Venice
Environmental Health Department
Vector Control Department
10110 16th St #11
www.venice.org

For mosquito problems, contact your [vector control](#).

Follow us on social media!



To receive weekly reports email: ACDC2@ph.lacounty.gov
Acute Communicable Disease Control (213) 240-7941
www.publichealth.lacounty.gov/acd/VectorWestNile.htm